

**PLAN @ END BENT 1**      **PLAN @ END BENT 2**  
 DIMENSIONS SHOWN ARE TYPICAL FOR BOTH APPROACH SLABS

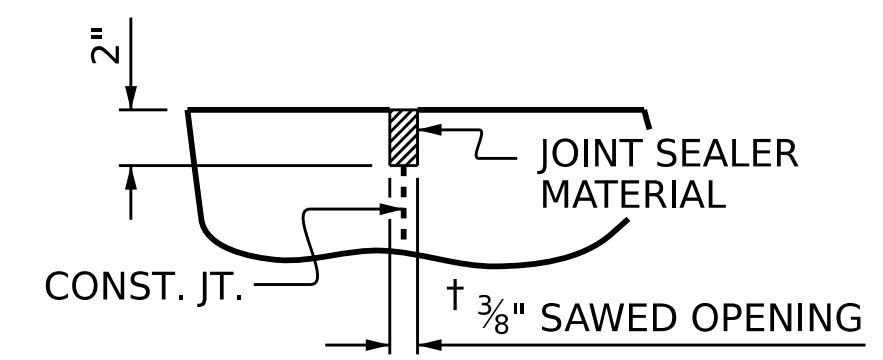
**NOTES:**  
 APPROACH SLAB SHALL NOT BE CONSTRUCTED PRIOR TO COMPLETION OF THE BRIDGE DECK.  
 FOR BRIDGE APPROACH FILL INCLUDING GEOTEXTILE AND SELECT MATERIAL, SEE ROADWAY PLANS.  
 GEOTEXTILE (TYPE 1 OR TYPE 4a) SHALL BE IN ACCORDANCE WITH THE STANDARD SPECIFICATIONS SECTION 1056.  
 SELECT MATERIAL BACKFILL (CLASS V OR CLASS VI) SHALL BE IN ACCORDANCE WITH STANDARD SPECIFICATIONS SECTION 1016.  
 SELECT MATERIAL BACKFILL IS TO BE CONTINUOUS ALONG FILL FACE OF BACKWALL FROM OUTSIDE EDGE TO OUTSIDE EDGE OF APPROACH SLAB.  
 AREA BETWEEN THE WINGWALL AND APPROACH SLAB SHALL BE GRADED TO DRAIN THE WATER AWAY FROM THE FILL FACE OF THE BRIDGE AND SHALL BE PAVED. SEE ROADWAY PLANS.  
 THE JOINT OPENING AT THE APPROACH SLAB/DECK INTERFACE SHALL BE SAWED NO MORE THAN 12 HOURS AFTER THE APPROACH SLAB IS CAST. THE JOINT SHALL BE CLEANED OF ALL DEBRIS BEFORE THE SEALANT IS APPLIED. THE JOINT SEALER MATERIAL SHALL CONFORM TO THE REQUIREMENTS OF SECTION 1028-3 OF THE STANDARD SPECIFICATIONS.  
 AT THE CONTRACTORS OPTION, "TYPE 1A FILL" IN LIEU OF "TYPE I FILL" MAY BE CONSTRUCTED AT NO ADDITIONAL COST TO THE DEPARTMENT.  
 SEE SHEET 2 OF 2 FOR DETAILS AND NOTES.

**BILL OF MATERIAL**  
**FOR ONE APPROACH SLAB (2 REQ'D)**

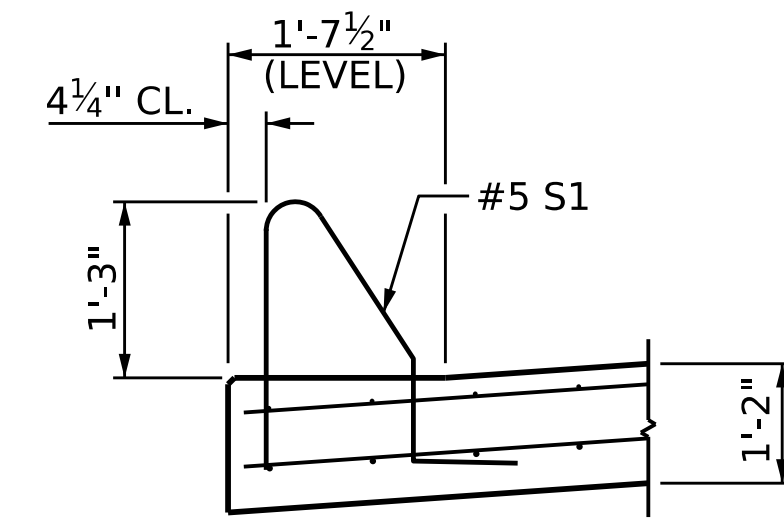
BAR	NO.	SIZE	TYPE	LENGTH	WEIGHT
* A1	52	#4	STR	24'-0"	834
A2	52	#4	STR	23'-10"	828
* B1	80	#5	STR	24'-0"	2,003
B2	80	#6	STR	24'-7"	2,954
REINFORCING STEEL					3,782 LBS.
* EPOXY COATED REINFORCING STEEL					2,837 LBS.
CLASS AA CONCRETE					43.4 C. Y.

**SPLICE LENGTHS**

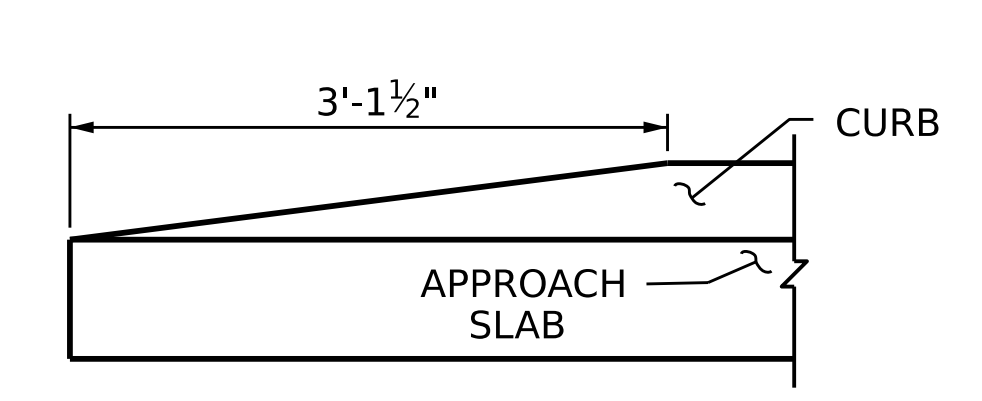
BAR SIZE	EPOXY COATED	UNCOATED
#4	1'-11"	1'-7"
#5	2'-5"	2'-0"
#6	3'-7"	2'-5"



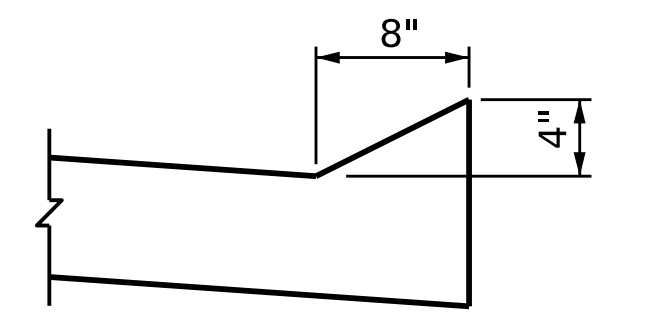
**DETAIL "A"**



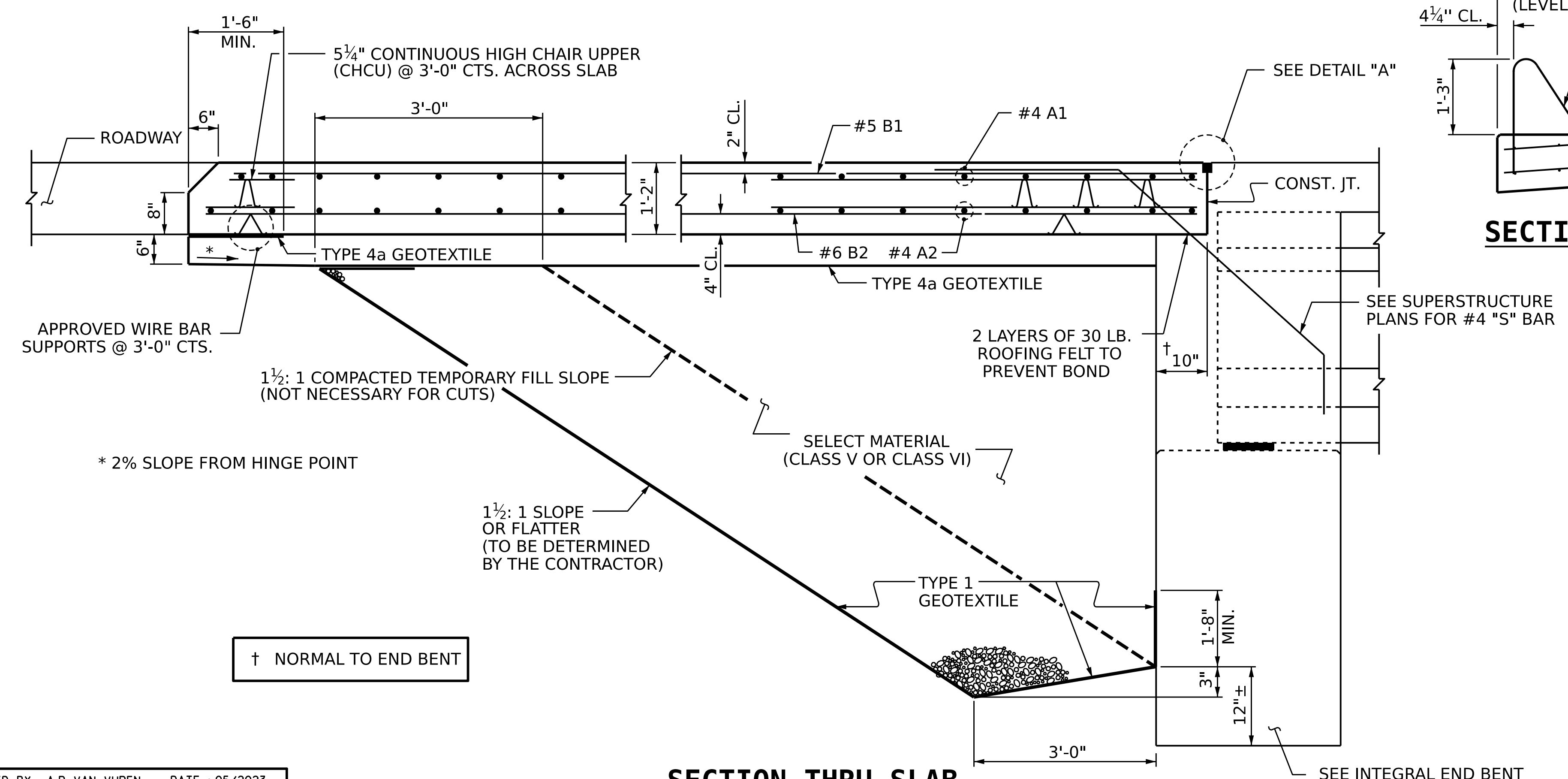
**SECTION K-K**



**END OF CURB WITHOUT SHOULDER BERM GUTTER**



**SECTION N-N**



**SECTION THRU SLAB**  
 (TYPE I - STANDARD APPROACH FILL)

PROJECT NO. B-3186 / B-5898  
HAYWOOD COUNTY  
 STATION: 24+42.26 -L\_RT-  
 SHEET 1 OF 3

**AECOM**  
AECOM TECHNICAL SERVICES OF NC, INC.  
 5430 WADE PARK BOULEVARD, SUITE 200  
 RALEIGH, NC 27607  
 (919) 854-6200 www.aecom.com  
 AECOM License No. F0242

**Professional Engineer Seal**  
 NORTH CAROLINA PROFESSIONAL ENGINEER  
 SEAL 054212  
 ANANDH K. MASIREVANI  
 10/18/2023

STATE OF NORTH CAROLINA  
 DEPARTMENT OF TRANSPORTATION  
 RALEIGH  
 STANDARD

BRIDGE APPROACH SLAB FOR INTEGRAL ABUTMENT WITH FLEXIBLE PAVEMENT

REVISIONS						SHEET NO.
NO.	BY:	DATE:	NO.	BY:	DATE:	S2-29
1			3			TOTAL SHEETS 31
2			4			

ASSEMBLED BY : A.R. VAN VUREN	DATE : 05/2023
CHECKED BY : A.K. VASUDEVAN	DATE : 06/2023
DRAWN BY : TLA 10/05	REV. 6/13 MAA/GM
CHECKED BY : GM 5/06	REV. 12/17 MAA/THC
	REV. 06/19 BNB/THC

DOCUMENT NOT CONSIDERED FINAL UNLESS ALL SIGNATURES COMPLETED