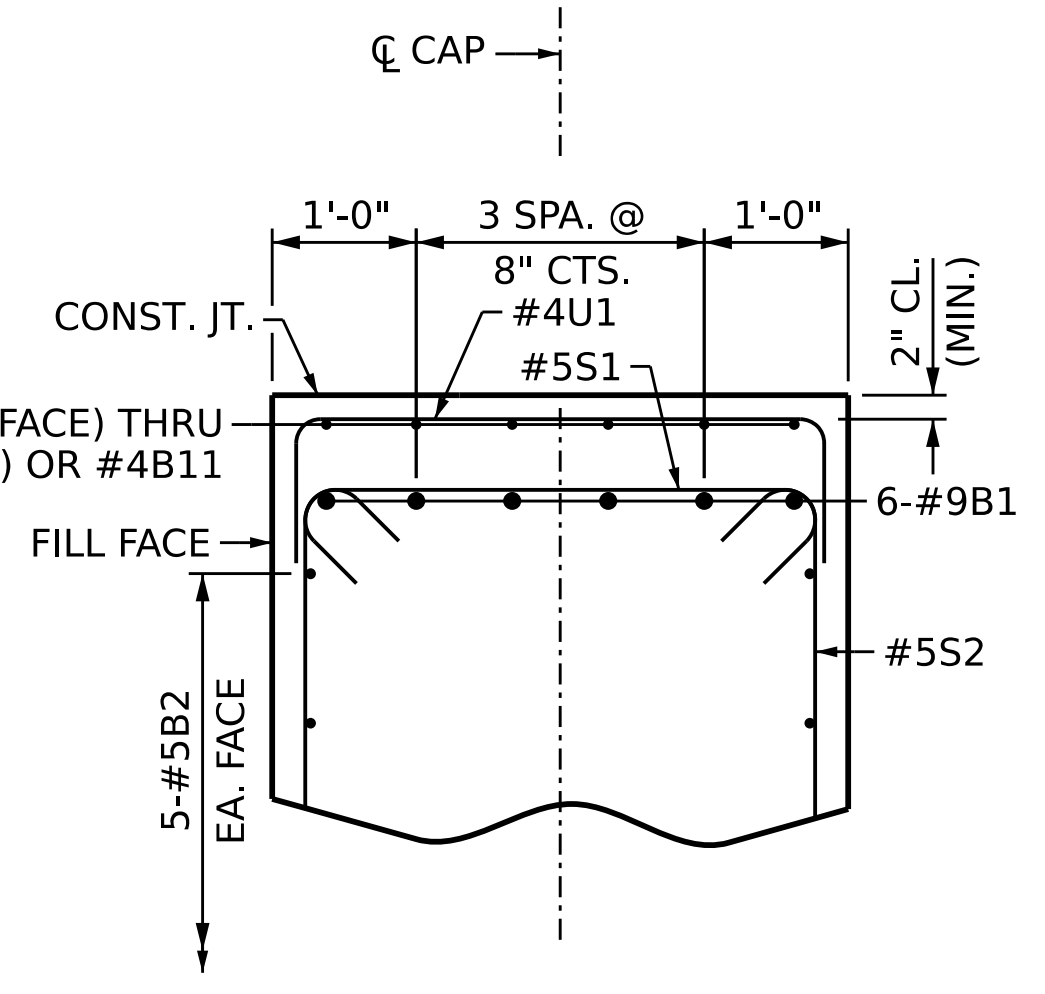
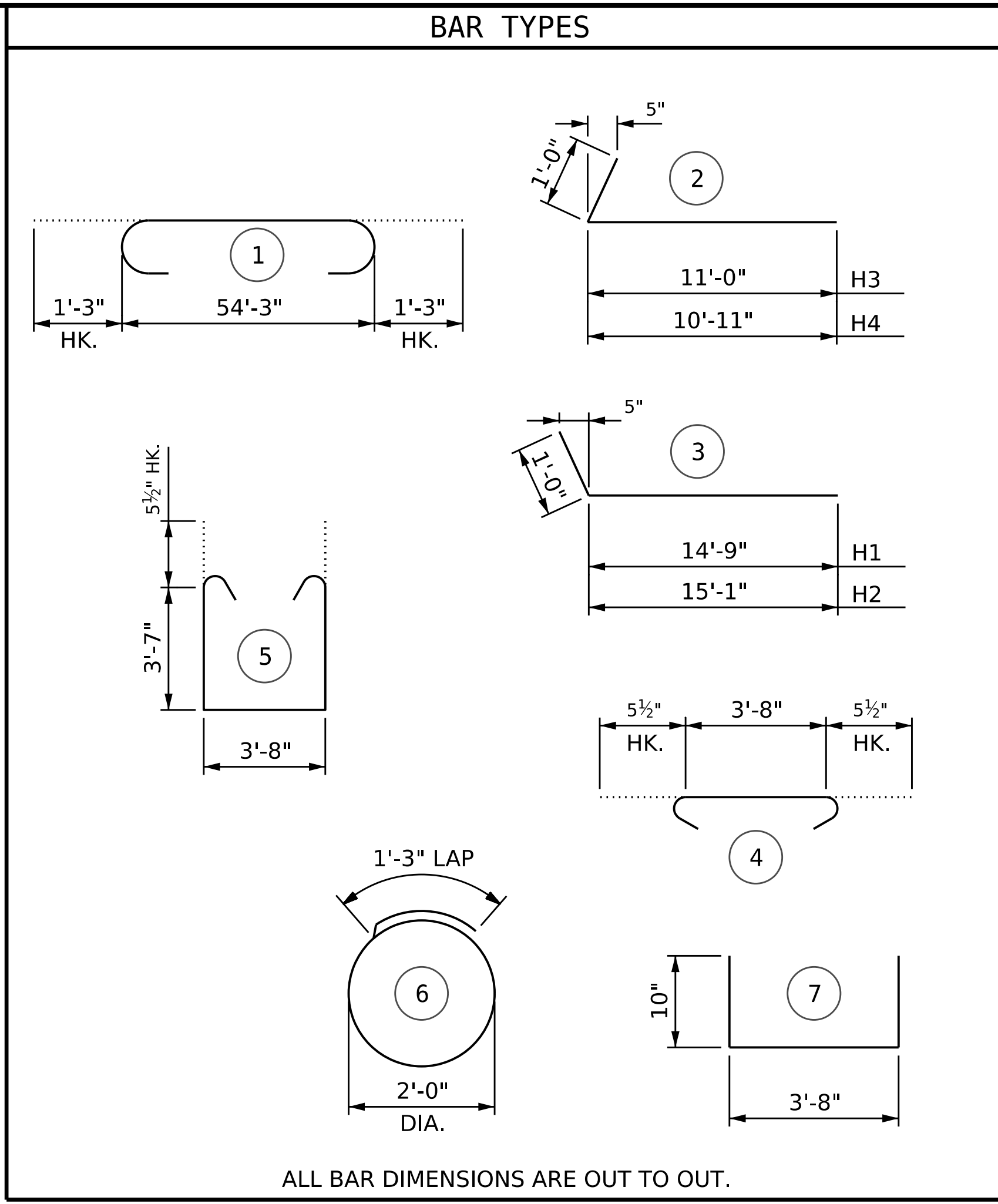


**SECTION A-A**

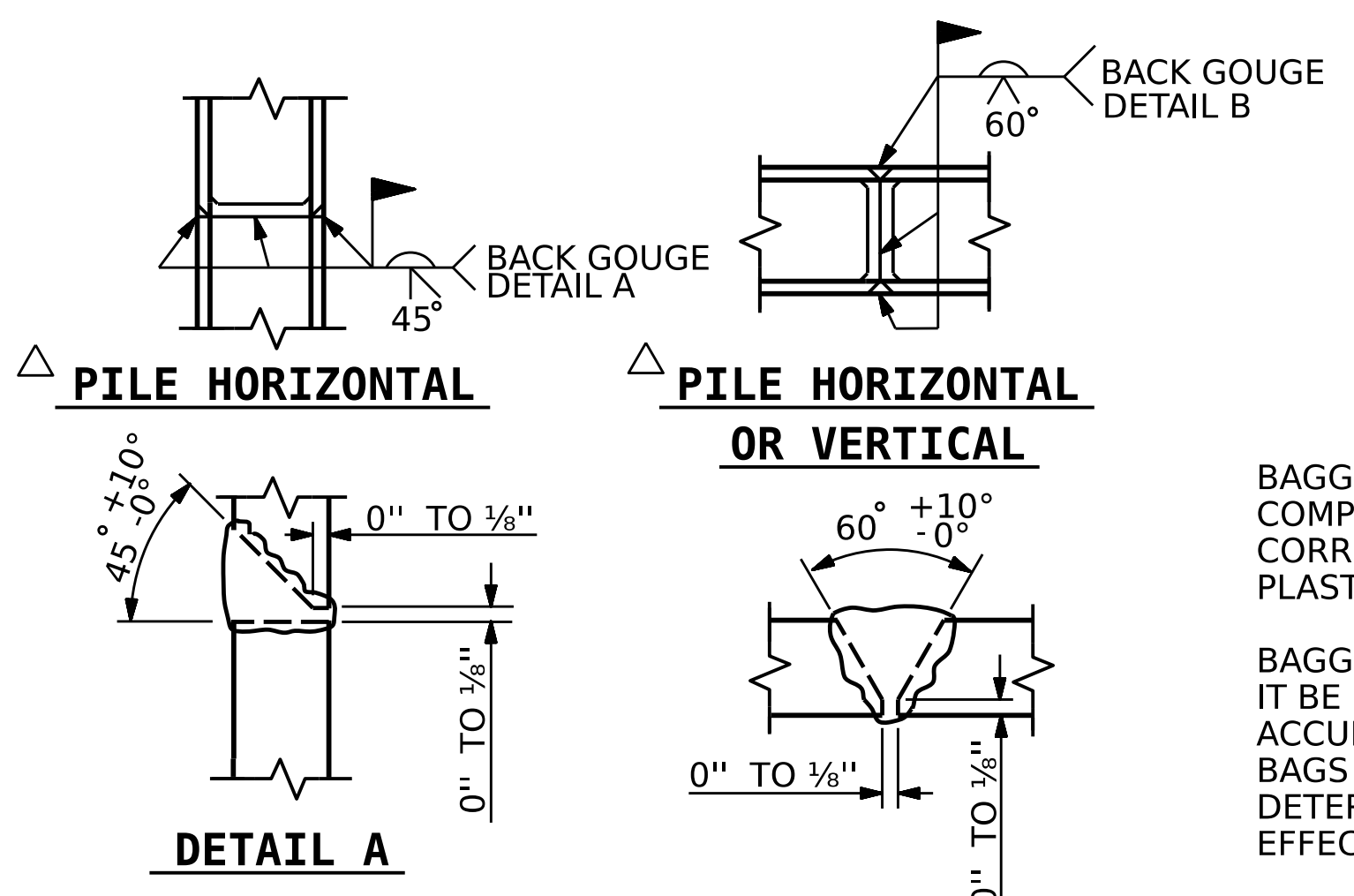


**PARTIAL SECTION B-B**

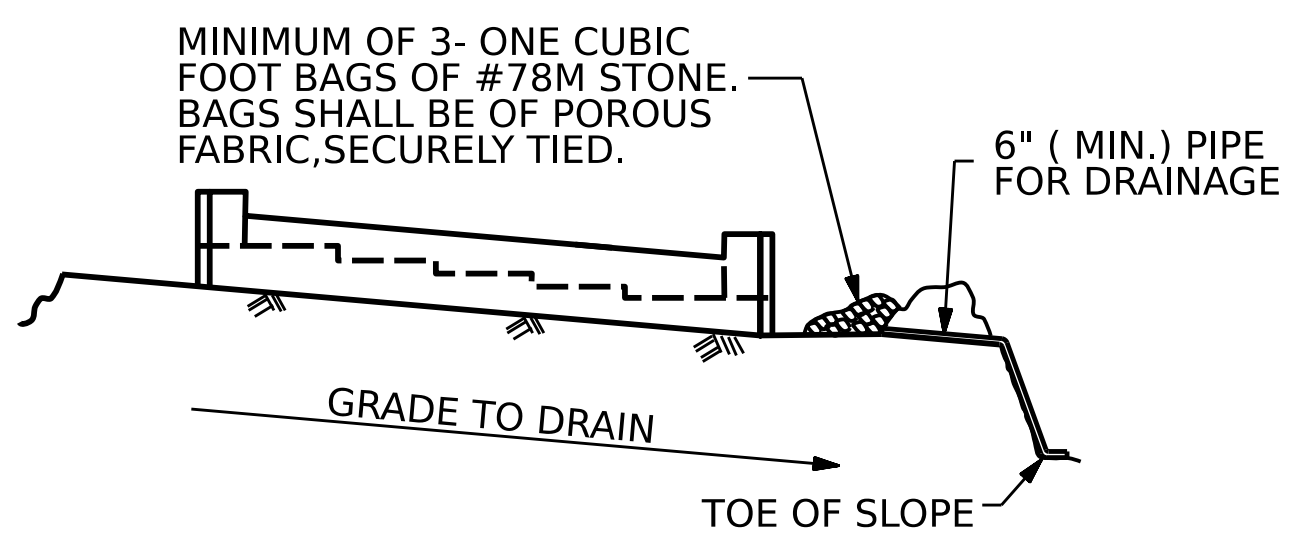


ALL BAR DIMENSIONS ARE OUT TO OUT.

BILL OF MATERIAL					
INTEGRAL END BENT 2					
BAR	NO.	SIZE	TYPE	LENGTH	WEIGHT
B1	12	9	1	56'-9"	2,315
B2	10	5	STR	54'-3"	566
B3	8	4	STR	28'-6"	152
B4	14	4	STR	3'-8"	34
B5	1	4	STR	9'-0"	6
B6	1	4	STR	8'-6"	6
B7	1	4	STR	8'-2"	6
B8	1	4	STR	7'-9"	5
B9	1	4	STR	7'-5"	5
B10	1	4	STR	6'-11"	5
B11	18	4	STR	7'-11"	97
H1	12	6	3	15'-9"	284
H2	12	6	3	16'-1"	290
H3	12	6	2	12'-0"	216
H4	12	6	2	11'-11"	215
H5	18	6	STR	18'-2"	491
H6	16	6	STR	14'-5"	346
K1	24	4	STR	3'-1"	49
K2	24	4	STR	3'-0"	48
S1	69	5	4	4'-7"	330
S2	69	5	5	11'-9"	846
S3	40	4	6	7'-7"	203
U1	23	4	7	5'-4"	82
V1	68	4	STR	6'-2"	280
V2	40	5	STR	10'-2"	424
V3	32	5	STR	9'-6"	317
REINFORCING STEEL					7,618 LBS.
CLASS A CONCRETE					
POUR #1 (CAP, COLLARS, & LOWER WINGWALLS)					40.8 C.Y.
POUR #2 (UPPER WINGWALL)					6.9 C.Y.
TOTAL =					47.7 C.Y.



**PILE SPLICE DETAILS**

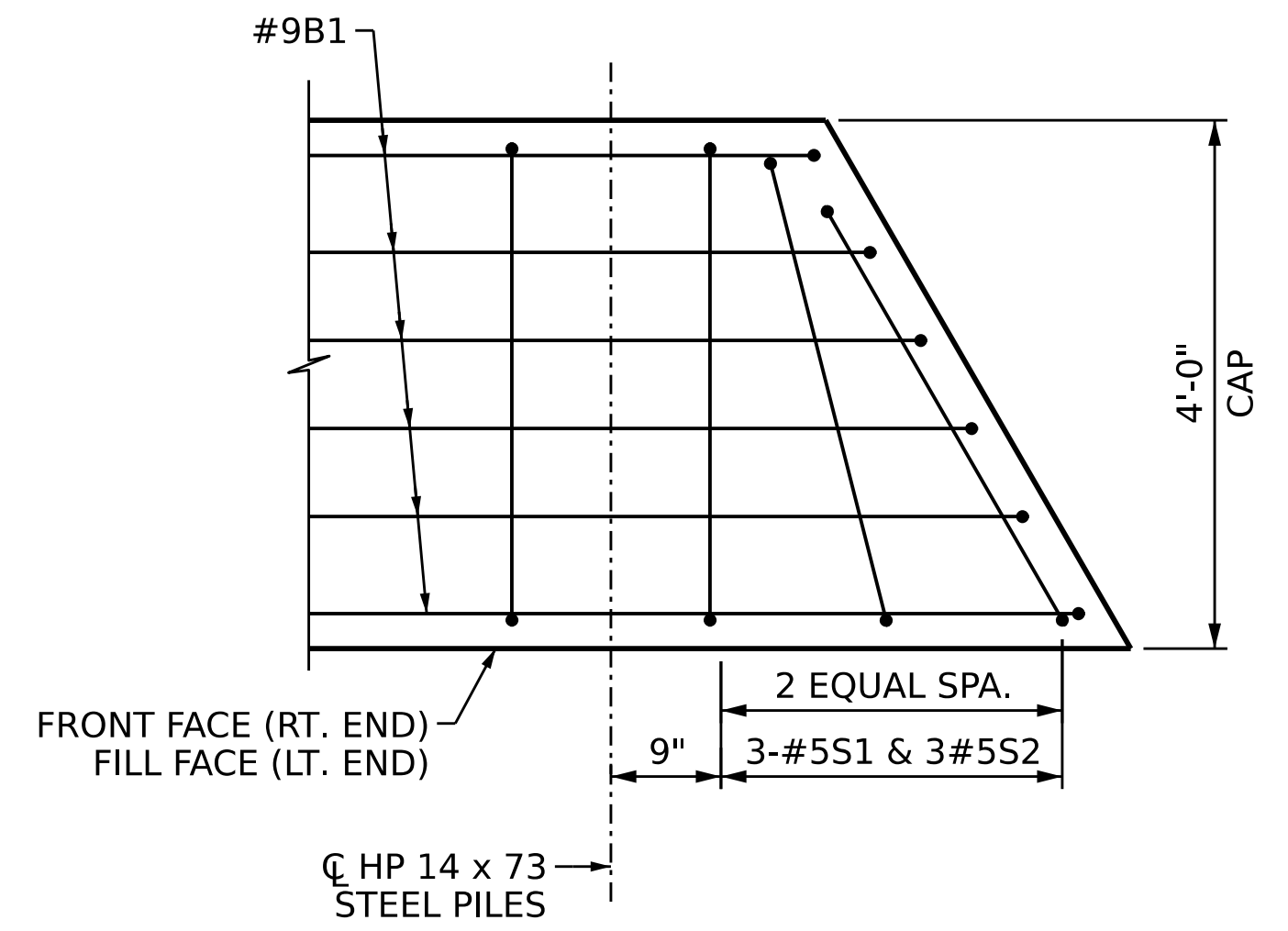


BAGGED STONE AND PIPE SHALL BE PLACED IMMEDIATELY AFTER COMPLETION OF END BENT EXCAVATION. PIPE MAY BE EITHER CONCRETE, CORRUGATED STEEL, CORRUGATED ALUMINUM ALLOY, OR CORRUGATED PLASTIC. PERFORATED PIPE WILL NOT BE ALLOWED.

BAGGED STONE SHALL REMAIN IN PLACE UNTIL THE ENGINEER DIRECTS THAT IT BE REMOVED. THE CONTRACTOR SHALL REMOVE AND DISPOSE OF SILT ACCUMULATIONS AT BAGGED STONE WHEN SO DIRECTED BY THE ENGINEER. BAGS SHALL BE REMOVED AND REPLACED WHENEVER THE ENGINEER DETERMINES THAT THEY HAVE DETERIORATED AND LOST THEIR EFFECTIVENESS.

NO SEPARATE PAYMENT WILL BE MADE FOR THIS WORK AND THE ENTIRE COST OF THIS WORK SHALL BE INCLUDED IN THE UNIT CONTRACT PRICE BID FOR THE SEVERAL PAY ITEMS.

**TEMPORARY DRAINAGE AT END BENT**



**SPRAYED BAR DETAIL**

PLAN VIEW SHOWN AT RIGHT END, LEFT END SIMILAR BY ROTATION WING WALL NOT SHOW FOR CLARITY

DOCUMENT NOT CONSIDERED FINAL UNLESS ALL SIGNATURES COMPLETED

PROJECT NO. B-3186 / B-5898  
HAYWOOD COUNTY  
 STATION: 24+42.26 -L\_RT-  
 SHEET 3 OF 3

STATE OF NORTH CAROLINA DEPARTMENT OF TRANSPORTATION RALEIGH					
SUBSTRUCTURE					
<b>INTEGRAL END BENT 2</b>					
REVISIONS					
NO.	BY:	DATE:	NO.	BY:	DATE:
1			3		
2			4		
SHEET NO.					S2-27
TOTAL SHEETS					31

DRAWN BY :	S.NATARAJAN	DATE :	05/2023
CHECKED BY :	A.K. VASUDEVAN	DATE :	05/2023
DESIGN ENGINEER OF RECORD :	A.K. VASUDEVAN	DATE :	06/2023