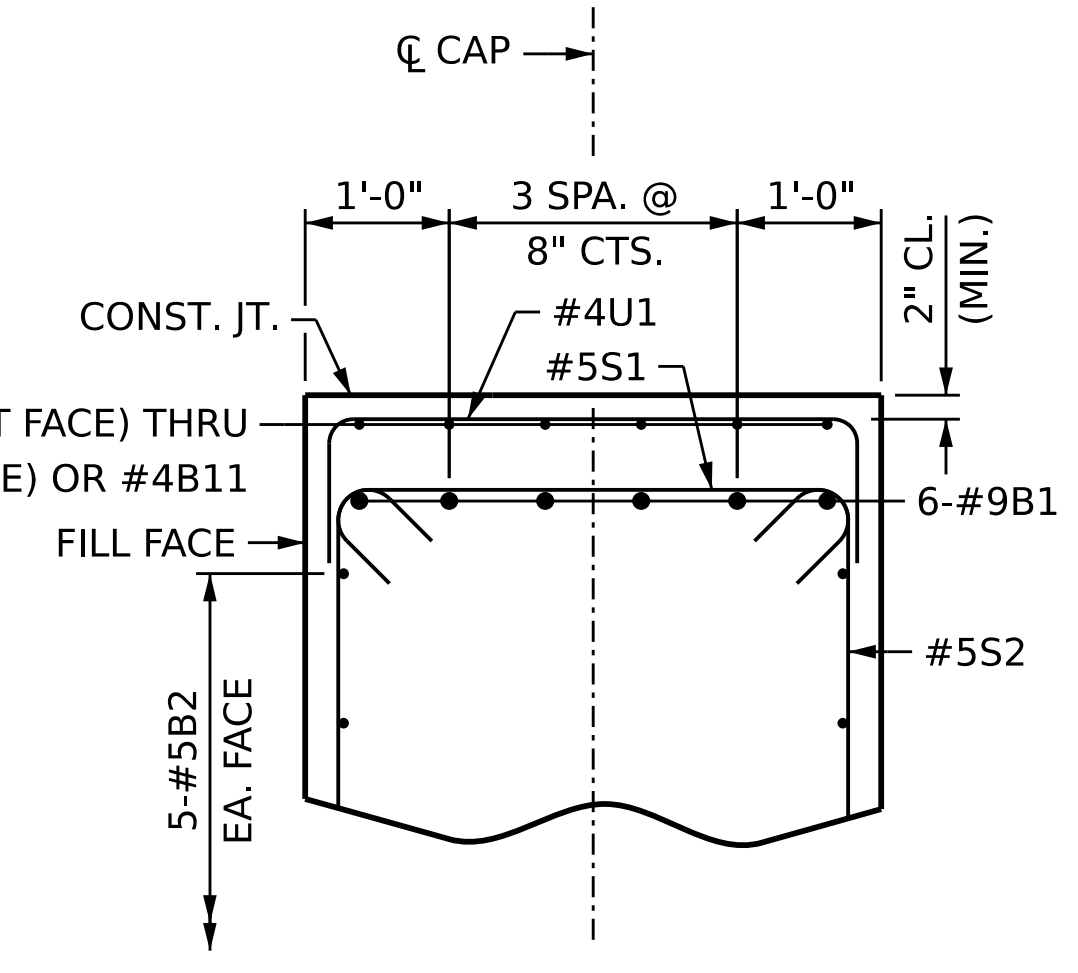
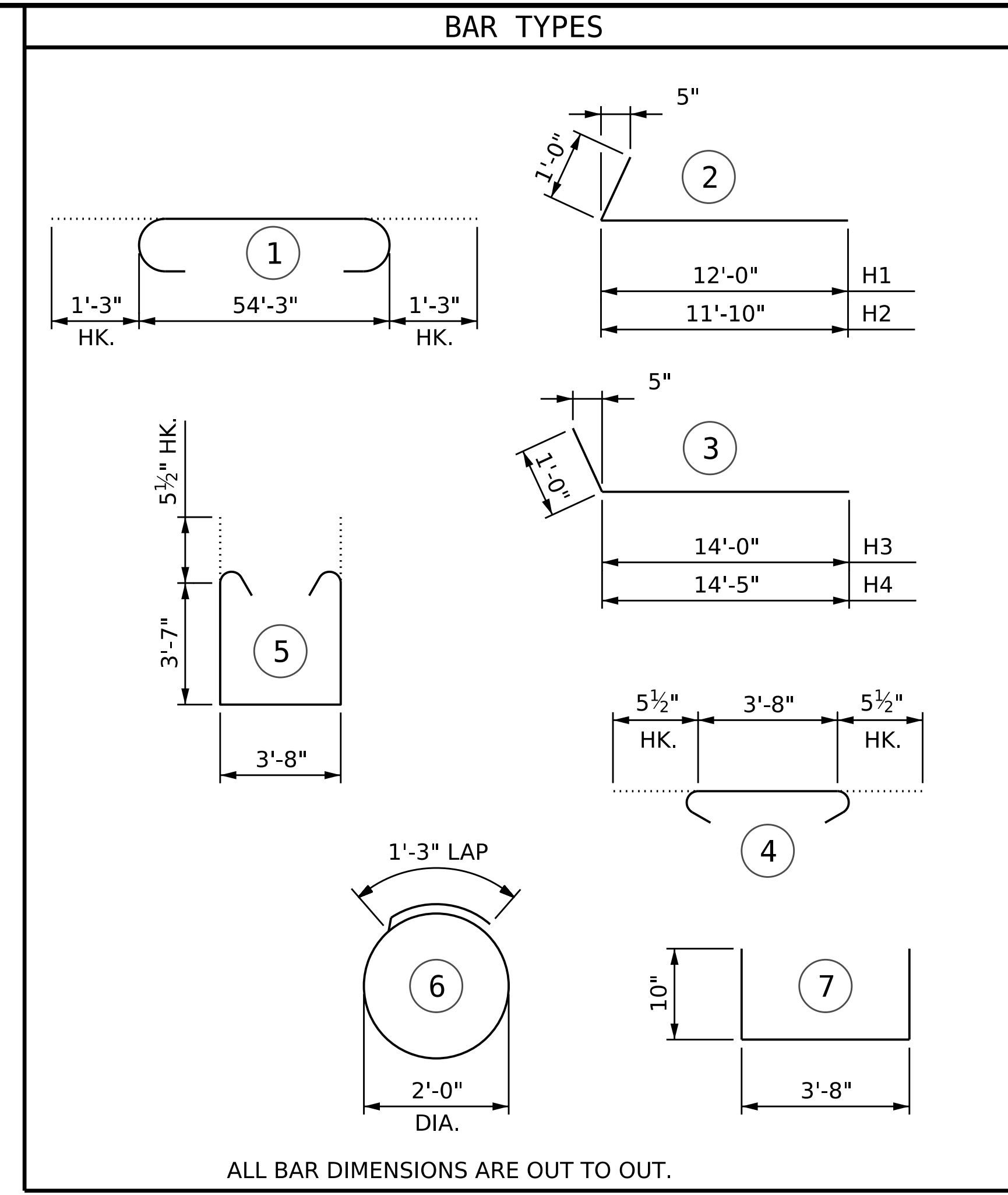


**SECTION A-A**

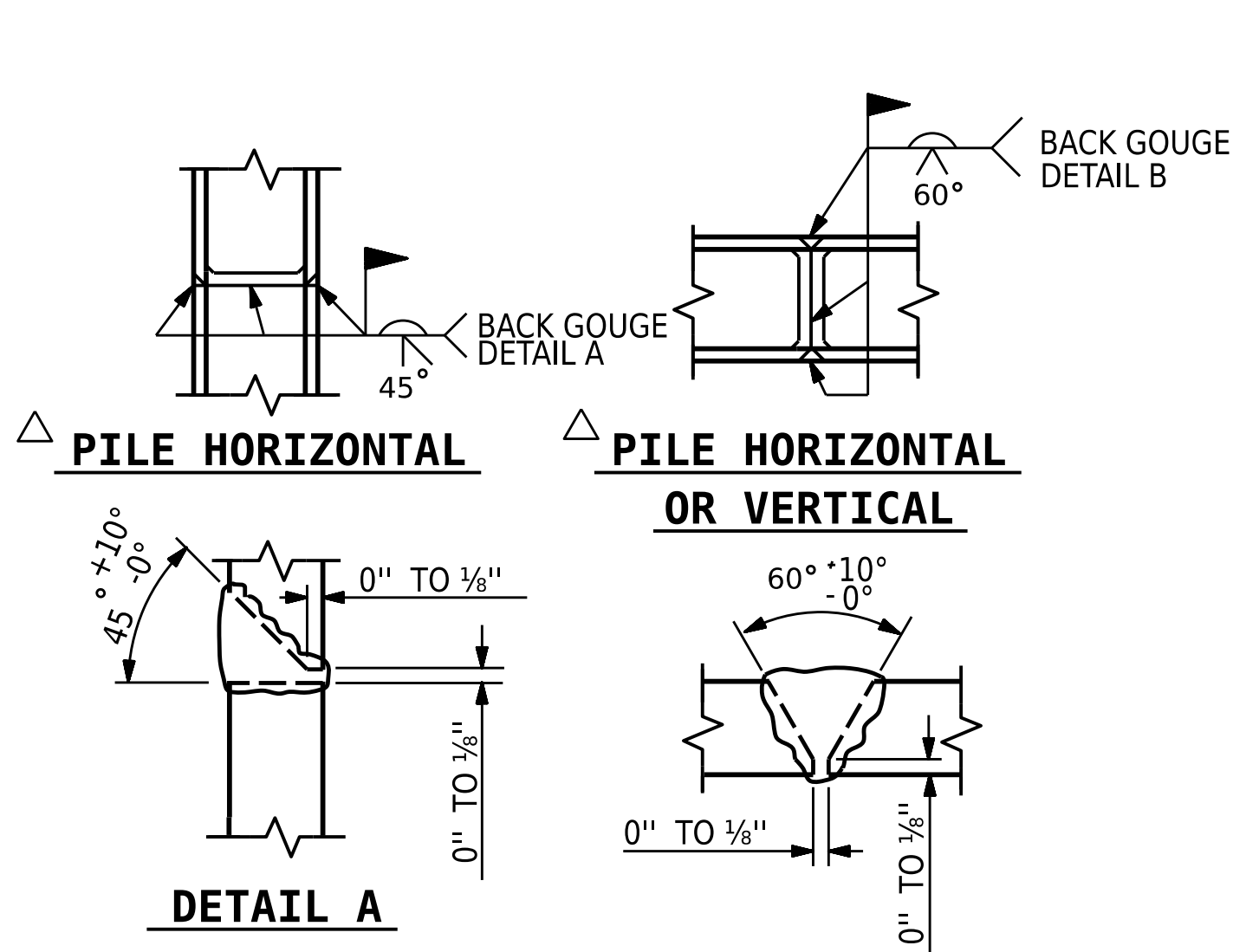


**PARTIAL SECTION B-B**

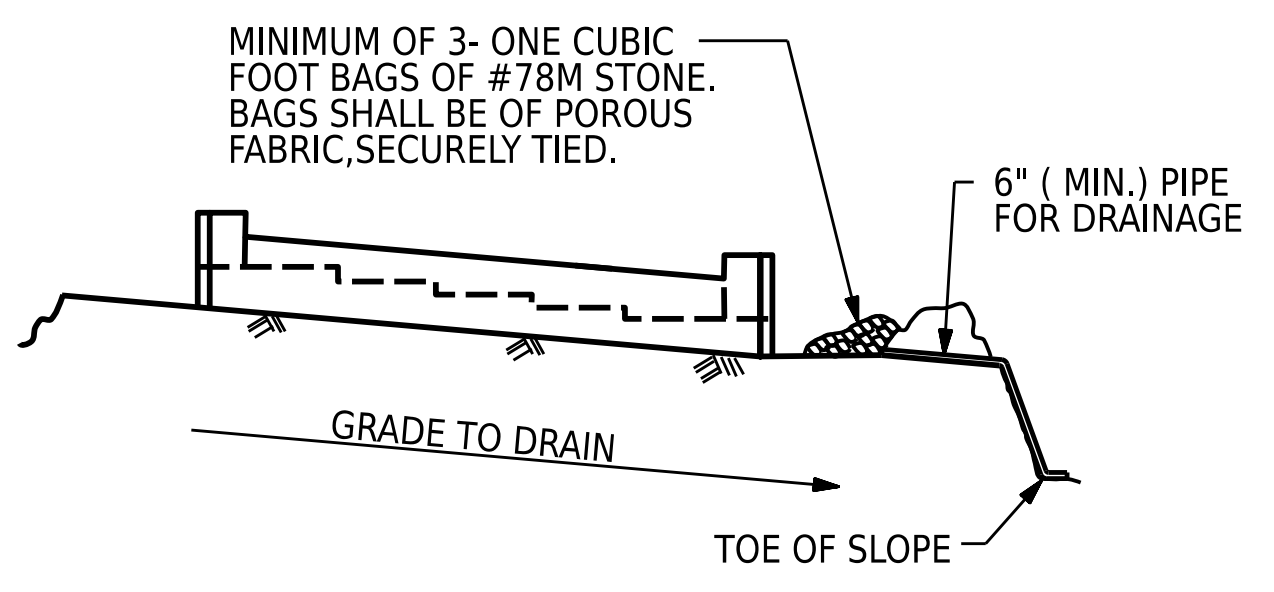


ALL BAR DIMENSIONS ARE OUT TO OUT.

BILL OF MATERIAL					
INTEGRAL END BENT 1					
BAR	NO.	SIZE	TYPE	LENGTH	WEIGHT
B1	12	9	1	56'-9"	2,315
B2	10	5	STR	54'-3"	566
B3	8	4	STR	28'-6"	152
B4	14	4	STR	3'-8"	34
B5	1	4	STR	9'-0"	6
B6	1	4	STR	8'-8"	6
B7	1	4	STR	8'-3"	6
B8	1	4	STR	7'-10"	5
B9	1	4	STR	7'-6"	5
B10	1	4	STR	7'-1"	5
B11	18	4	STR	7'-11"	95
H1	12	6	2	13'-0"	234
H2	12	6	2	12'-10"	231
H3	12	6	3	15'-0"	270
H4	12	6	3	15'-5"	278
H5	18	6	STR	15'-4"	415
H6	16	6	STR	17'-6"	421
K1	24	4	STR	3'-0"	48
K2	24	4	STR	3'-1"	49
S1	61	5	4	4'-7"	292
S2	61	5	5	11'-9"	748
S3	48	4	6	7'-7"	243
U1	23	4	7	5'-4"	82
V1	68	4	STR	6'-2"	280
V2	34	5	STR	10'-3"	363
V3	38	5	STR	9'-7"	380
REINFORCING STEEL				7,529 LBS.	
CLASS A CONCRETE					
POUR #1 (CAP, COLLARS, & LOWER WINGWALLS)				40.7 C.Y.	
POUR #2 (UPPER WINGWALL)				7.0 C.Y.	
TOTAL				47.7 C.Y.	



**PILE SPLICE DETAILS**



MINIMUM OF 3- ONE CUBIC FOOT BAGS OF #78M STONE. BAGS SHALL BE OF POROUS FABRIC, SECURELY TIED.

6" (MIN.) PIPE FOR DRAINAGE

GRADE TO DRAIN

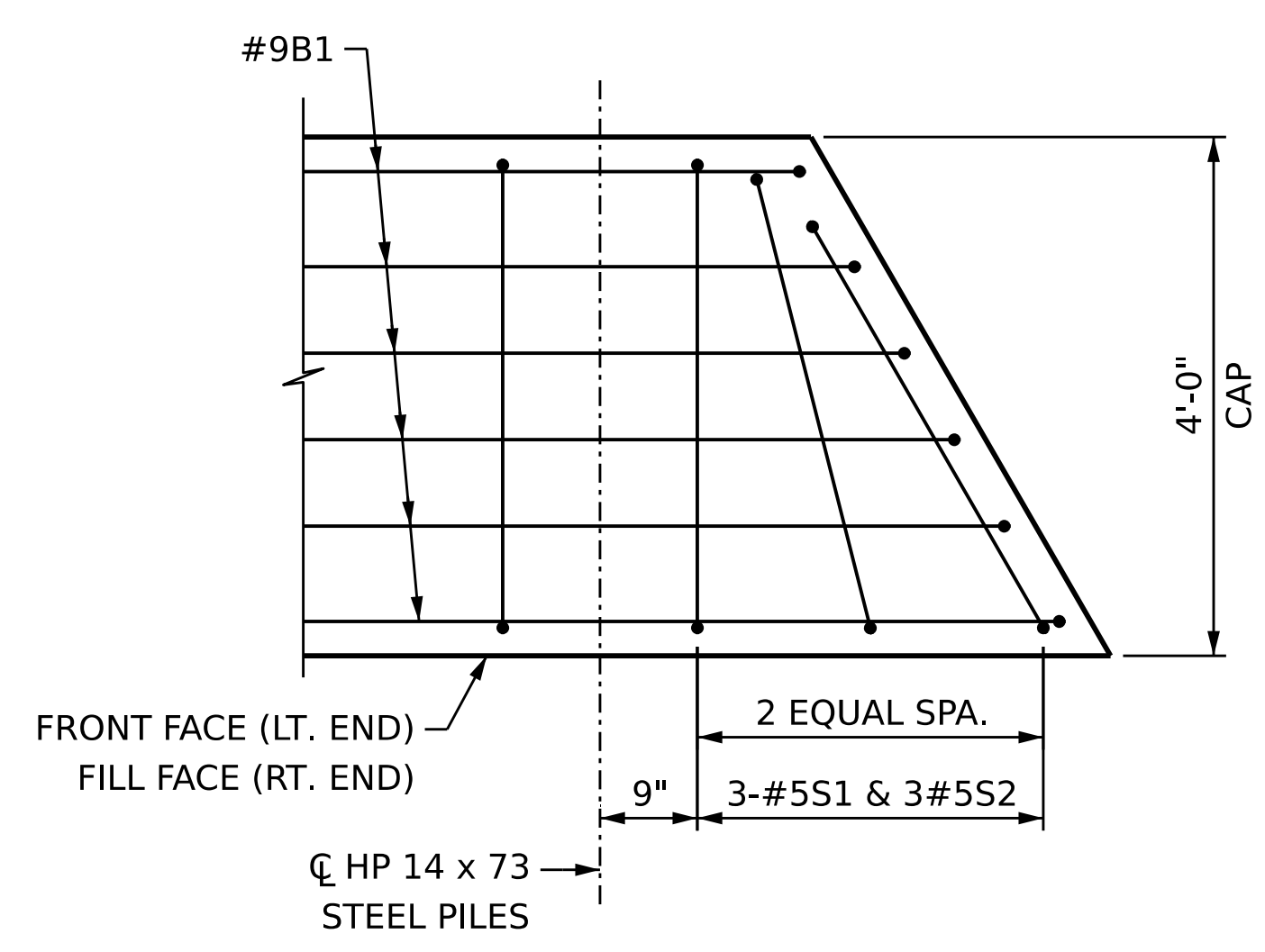
TOE OF SLOPE

BAGGED STONE AND PIPE SHALL BE PLACED IMMEDIATELY AFTER COMPLETION OF END BENT EXCAVATION. PIPE MAY BE EITHER CONCRETE, CORRUGATED STEEL, CORRUGATED ALUMINUM ALLOY, OR CORRUGATED PLASTIC. PERFORATED PIPE WILL NOT BE ALLOWED.

BAGGED STONE SHALL REMAIN IN PLACE UNTIL THE ENGINEER DIRECTS THAT IT BE REMOVED. THE CONTRACTOR SHALL REMOVE AND DISPOSE OF SILT ACCUMULATIONS AT BAGGED STONE WHEN SO DIRECTED BY THE ENGINEER. BAGS SHALL BE REMOVED AND REPLACED WHENEVER THE ENGINEER DETERMINES THAT THEY HAVE DETERIORATED AND LOST THEIR EFFECTIVENESS.

NO SEPARATE PAYMENT WILL BE MADE FOR THIS WORK AND THE ENTIRE COST OF THIS WORK SHALL BE INCLUDED IN THE UNIT CONTRACT PRICE BID FOR THE SEVERAL PAY ITEMS.

**TEMPORARY DRAINAGE AT END BENT**



**SPLAYED BAR DETAIL**

PLAN VIEW SHOWN AT RIGHT END, LEFT END SIMILAR BY ROTATION (WINGWALL NOT SHOWN FOR CLARITY)

PROJECT NO. B-3186 / B-5898  
HAYWOOD COUNTY  
 STATION: 24+42.26 -L\_RT-  
 SHEET 3 OF 3

STATE OF NORTH CAROLINA DEPARTMENT OF TRANSPORTATION RALEIGH					
SUBSTRUCTURE					
INTEGRAL END BENT 1					
REVISIONS					
NO.	BY:	DATE:	NO.	BY:	DATE:
1			3		
2			4		
					SHEET NO. S2-22
					TOTAL SHEETS 31

DRAWN BY: A.R. VAN VUREN DATE: 05/2023  
 CHECKED BY: A.K. VASUDEVAN DATE: 05/2023  
 DESIGN ENGINEER OF RECORD: A.K. VASUDEVAN DATE: 06/2023

DOCUMENT NOT CONSIDERED FINAL UNLESS ALL SIGNATURES COMPLETED

10/18/2023