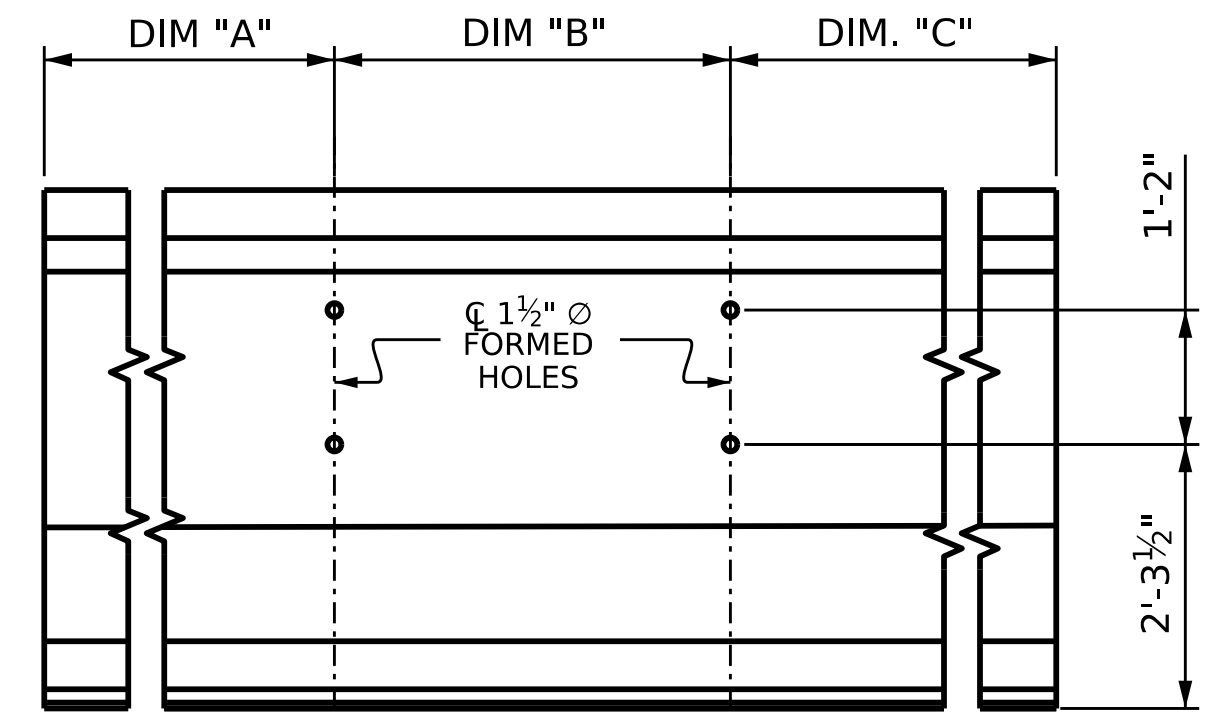


FRAMING PLAN

| FORMED HOLE LOCATIONS (DIAPH 1A) | | | |
|----------------------------------|------------|-----------|------------|
| GIRDER | DIM "A" | DIM "B" | DIM "C" |
| A1 | 41'-6 1/2" | - | 88'-5 1/4" |
| A2 - A5 | 41'-6 1/2" | 4'-0 1/2" | 84'-4 3/4" |
| A6 | 45'-7" | - | 84'-4 3/4" |

| FORMED HOLE LOCATIONS (DIAPH 1B) | | | |
|----------------------------------|------------|-----------|------------|
| GIRDER | DIM "A" | DIM "B" | DIM "C" |
| A1 | 84'-4 3/4" | - | 45'-7" |
| A2 - A5 | 84'-4 3/4" | 4'-0 1/2" | 41'-6 1/2" |
| A6 | 88'-5 1/4" | - | 41'-6 1/2" |

| FORMED HOLE LOCATIONS (DIAPH 2) | | | |
|---------------------------------|-------------|-----------|-------------|
| GIRDER | DIM "A" | DIM "B" | DIM "C" |
| B1 | 34'-11 5/8" | - | 39'-0 1/8" |
| B2 - B5 | 34'-11 5/8" | 4'-0 1/2" | 34'-11 5/8" |
| B6 | 39'-0 1/8" | - | 34'-11 5/8" |



NOTES

- FOR ELASTOMERIC BEARING AND SOLE PLATE DETAILS, SEE "SUPERSTRUCTURE ELASTOMERIC BEARING DETAILS" SHEET.
- FOR DIAPHRAGM DETAILS, SEE "SUPERSTRUCTURE INTERMEDIATE STEEL DIAPHRAGMS" SHEET.
- FOR END BENT DIAPHRAGM DETAILS, SEE "SUPERSTRUCTURE TYPICAL SECTION DETAILS" SHEETS.

PROJECT NO. **B-3186 / B-5898**
HAYWOOD COUNTY
 STATION: **24+42.26 -L_RT-**

STATE OF NORTH CAROLINA
 DEPARTMENT OF TRANSPORTATION
 RALEIGH
**SUPERSTRUCTURE
 FRAMING PLAN**

DRAWN BY: A.R. VAN VUREN DATE: 04/2023
 CHECKED BY: A.K. VASUDEVAN DATE: 04/2023
 DESIGN ENGINEER OF RECORD: A.K. VASUDEVAN DATE: 06/2023

DOCUMENT NOT CONSIDERED
 FINAL UNLESS ALL
 SIGNATURES COMPLETED

| REVISIONS | | | | | | SHEET NO. |
|-----------|-----|-------|-----|-----|-------|--------------|
| NO. | BY: | DATE: | NO. | BY: | DATE: | S2-10 |
| 1 | | | 3 | | | TOTAL SHEETS |
| 2 | | | 4 | | | 31 |