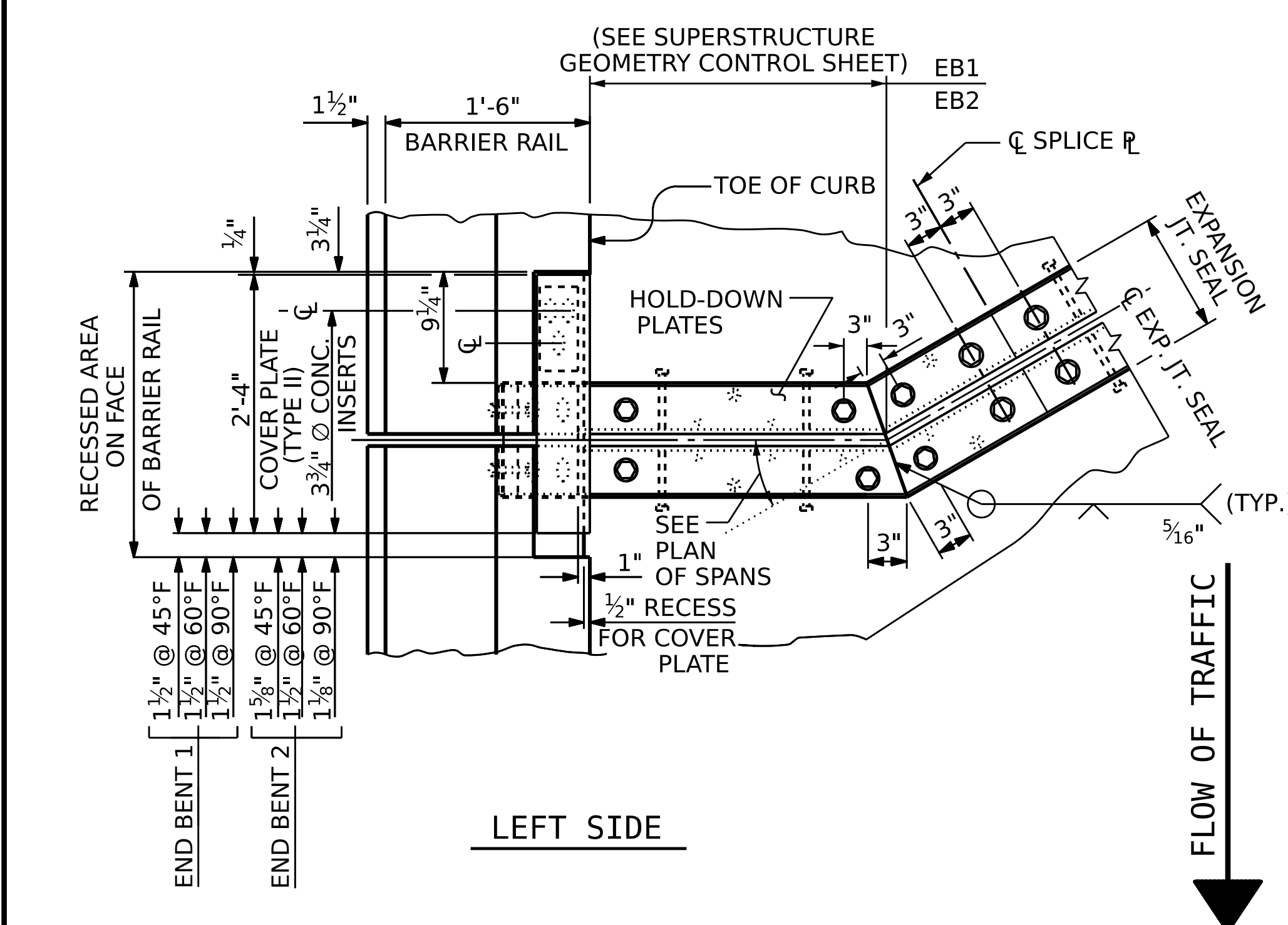
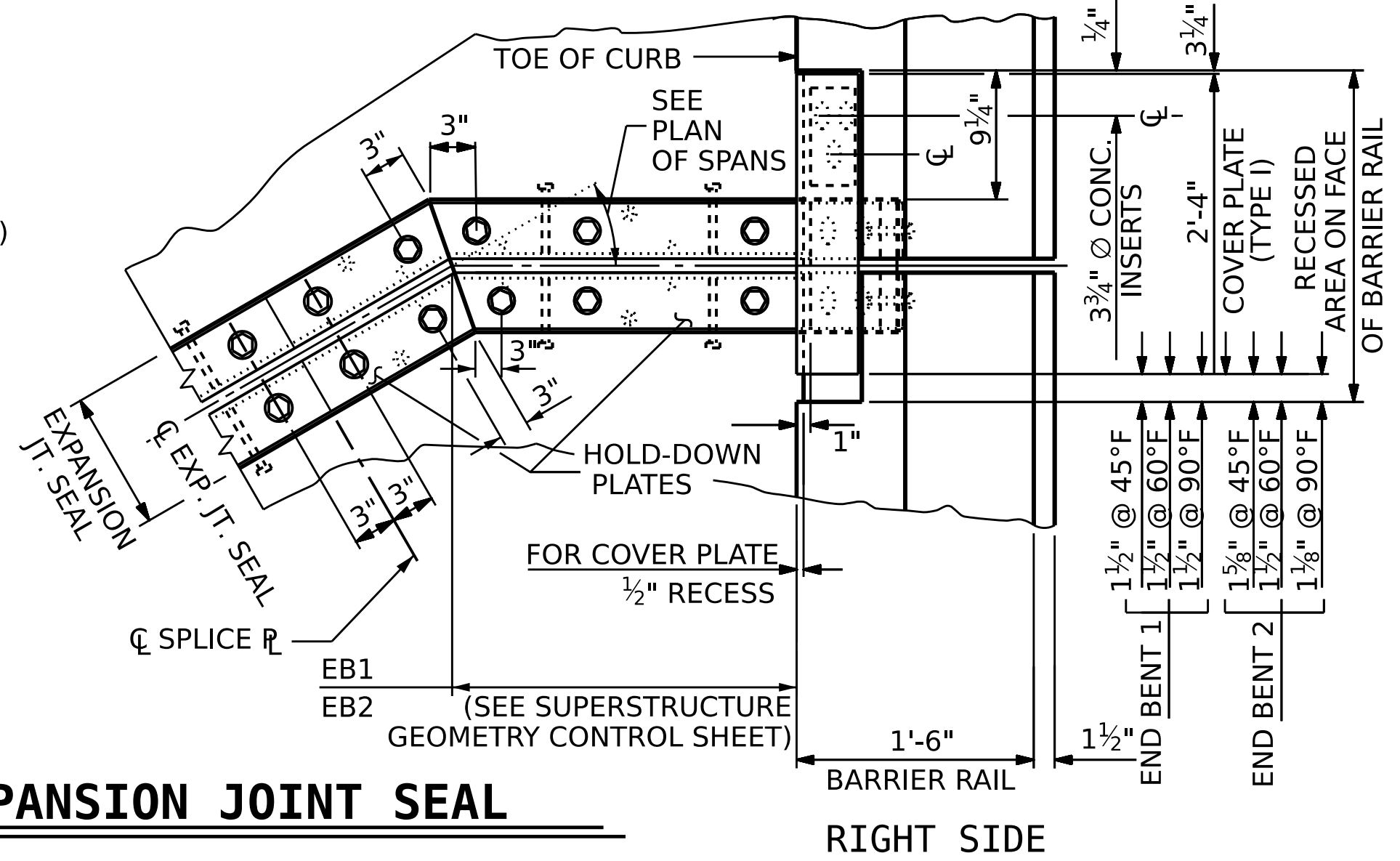


SECTION THRU RAIL NORMAL TO JOINT

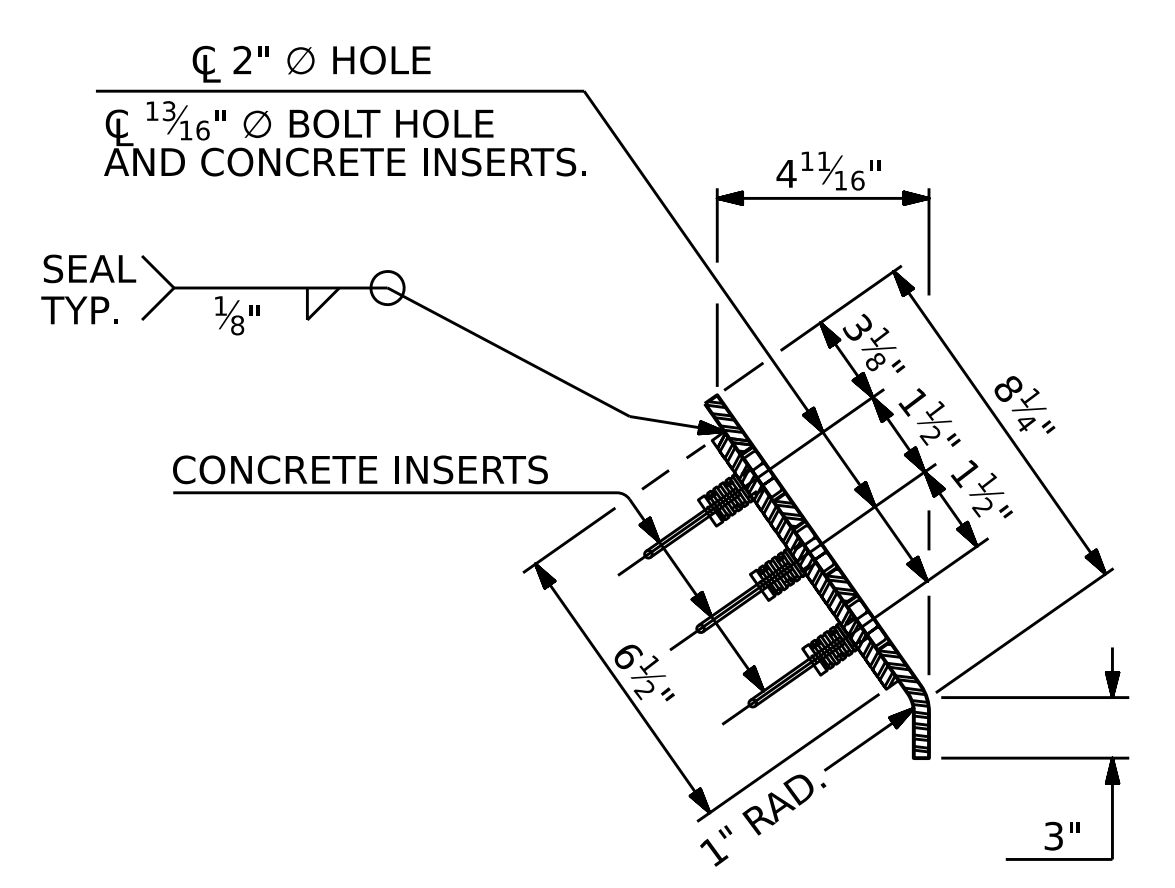


LEFT SIDE

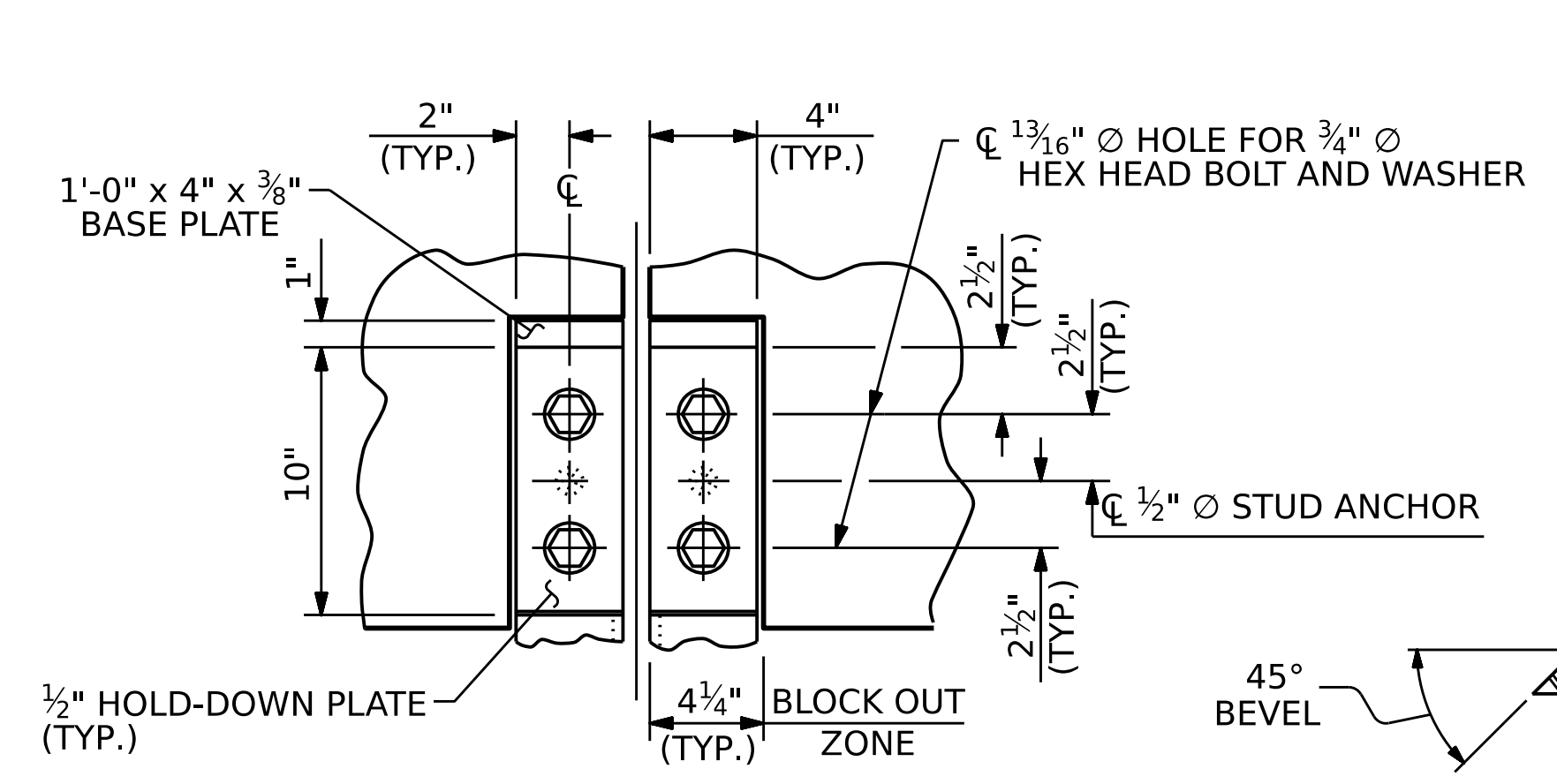


PLAN OF EXPANSION JOINT SEAL

ASSEMBLED BY : T.E. NEAL	DATE : 04/2023
CHECKED BY : S. NATARAJAN	DATE : 04/2023
DRAWN BY : REK 9/87	REV. 7/12 MAA/GM
CHECKED BY : CRK 10/87	REV. 6/13 MAA/GM
	REV. 12/17 MAA/THC

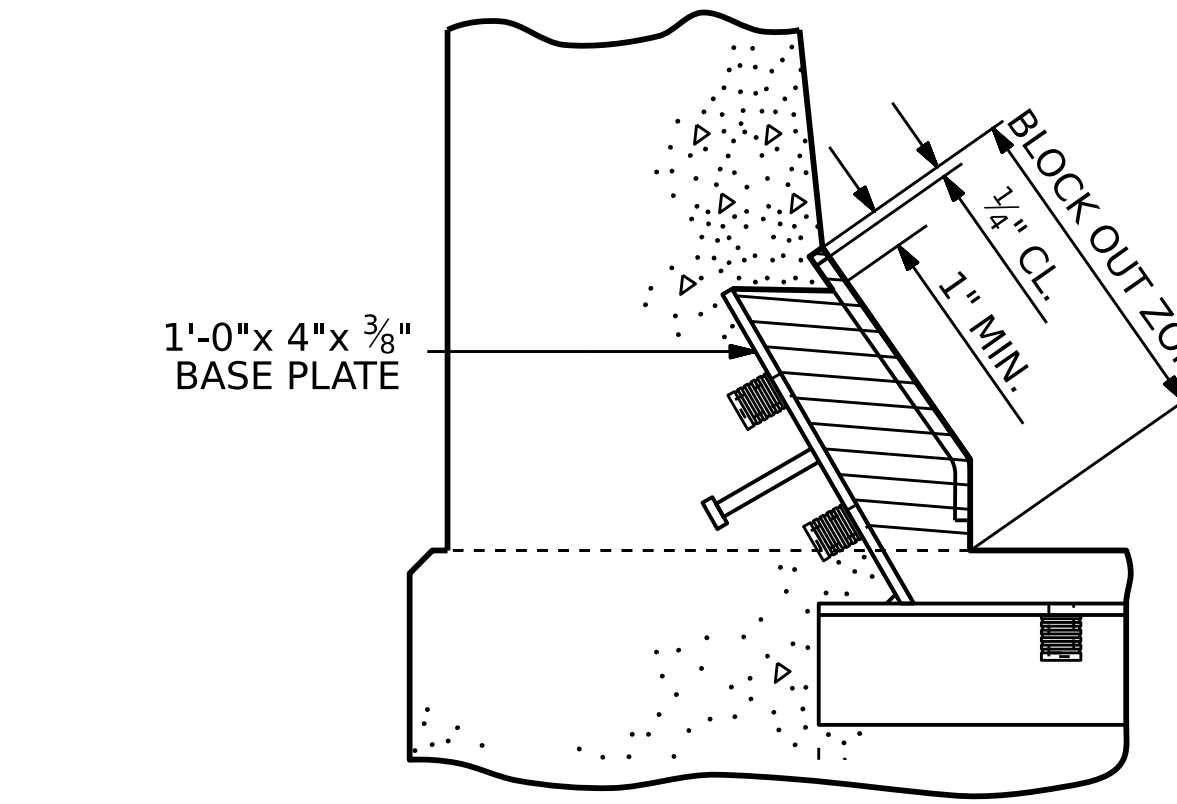


END VIEW

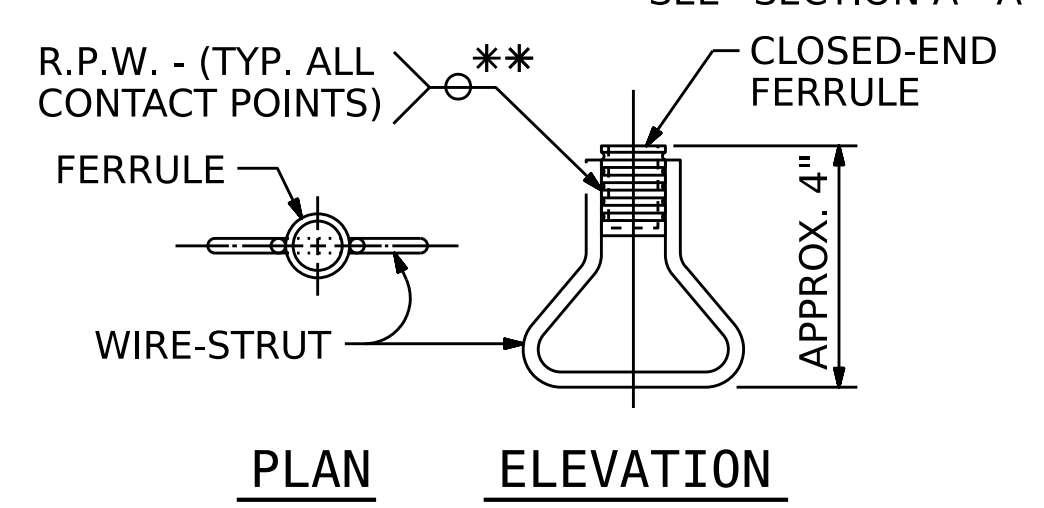


SECTION A-A

SECTION B-B

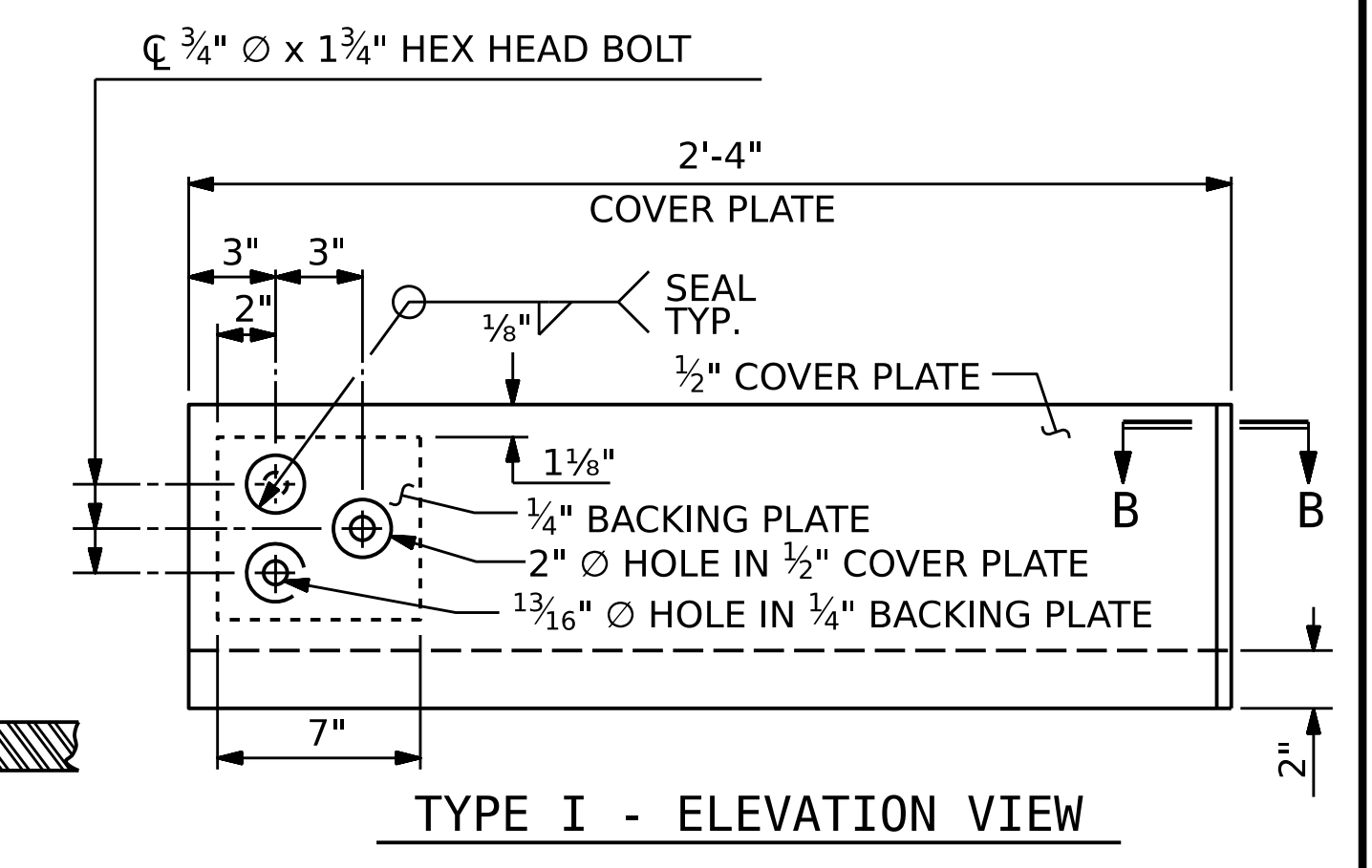


BLOCK OUT DETAIL

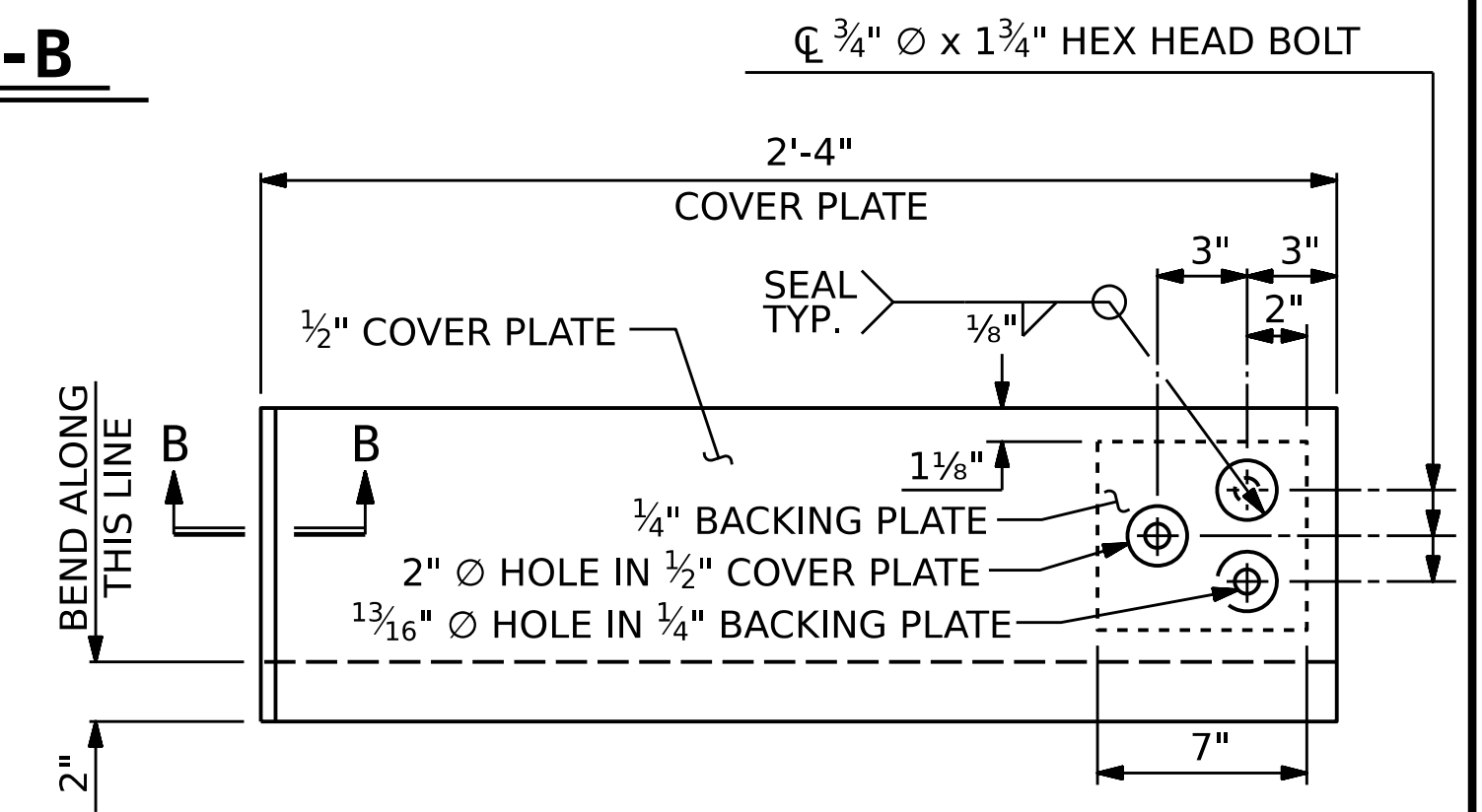


CONCRETE INSERT

EACH WELDED ATTACHMENT OF WIRE TO FERRULE SHALL DEVELOP THE TENSILE STRENGTH OF THE WIRE.

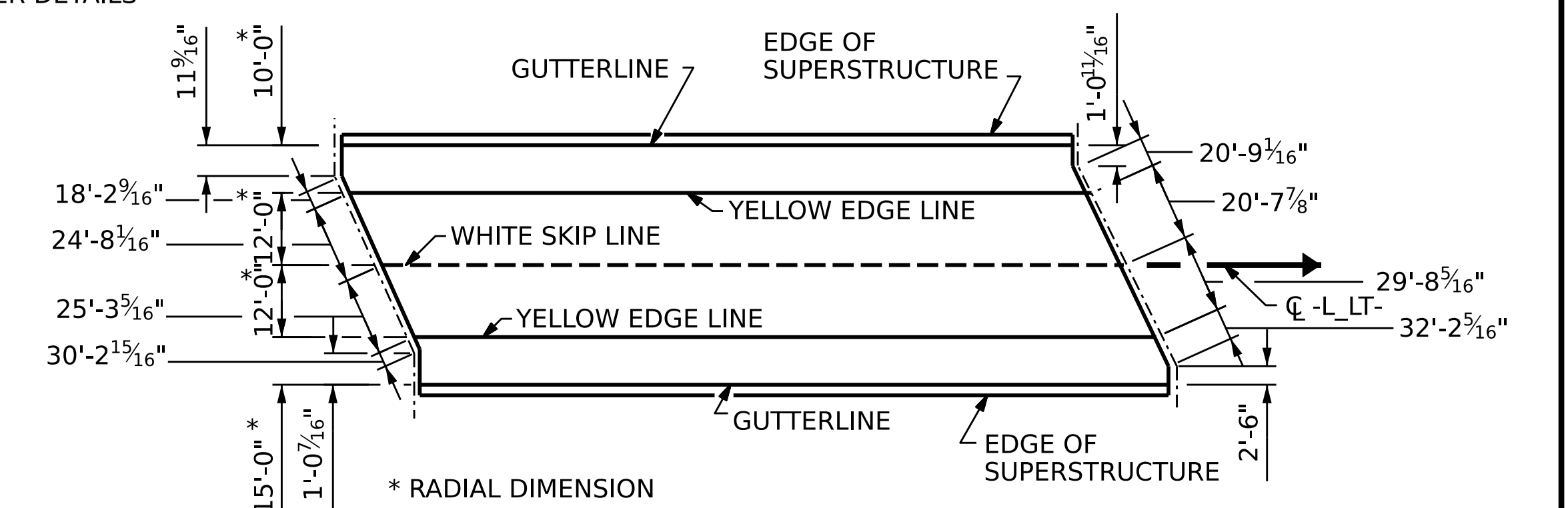


TYPE I - ELEVATION VIEW



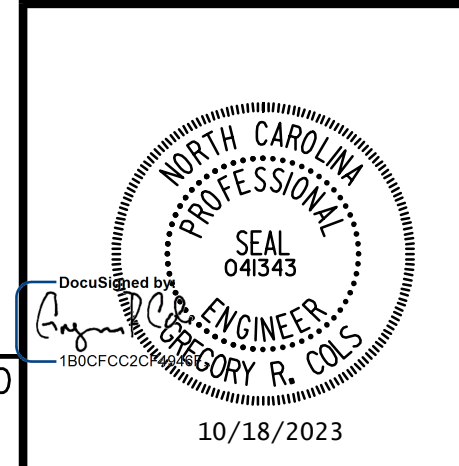
TYPE II - ELEVATION VIEW

COVER PLATE DETAILS



PAVEMENT MARKING ALIGNMENT

PROJECT NO. B-3186 / B-5898
HAYWOOD COUNTY
STATION: 32+21.34 -L LT-
SHEET 2 OF 2



STATE OF NORTH CAROLINA
DEPARTMENT OF TRANSPORTATION
RALEIGH
STANDARD
EXPANSION JOINT SEAL DETAILS FOR BARRIER RAIL

REVISIONS				SHEET NO.	
NO.	BY:	DATE:	NO.	BY:	DATE:
1			3		
2			4		

TOTAL SHEETS: 43

DOCUMENT NOT CONSIDERED FINAL UNLESS ALL SIGNATURES COMPLETED