

UTILIZE COIR FIBER MATTING FOR STABILIZATION OF BRIDGE WORK EXCAVATION

UTILIZE FABRIC INSERT PROTECTION DEVICES IN LIEU OF ROCK INLET SEDIMENT TRAPS C IN AREAS WHERE WATER MAY POND ON ROAD OPEN TO LIVE TRAFFIC

Place Matting for Erosion Control on All Slopes as Work Allows.

UTILIZE SPECIAL STILLING BASINS WHERE APPLICABLE

30' x 14' x 3'
1.5 inch Skimmer
with 0.75 inch
Orifice Diameter
4 ft. weir
(See Tiered Skimmer
Basin Detail)
ID 5.3

Modified Silt Basin
Type 'B'
30' x 14' x 3'
4 ft. weir
(See Tiered Skimmer
Basin Detail)
ID 5.3

78' x 39' x 3'
2.0 inch Skimmer
with 1.625 inch
Orifice Diameter
11 ft. weir
ID 5.1

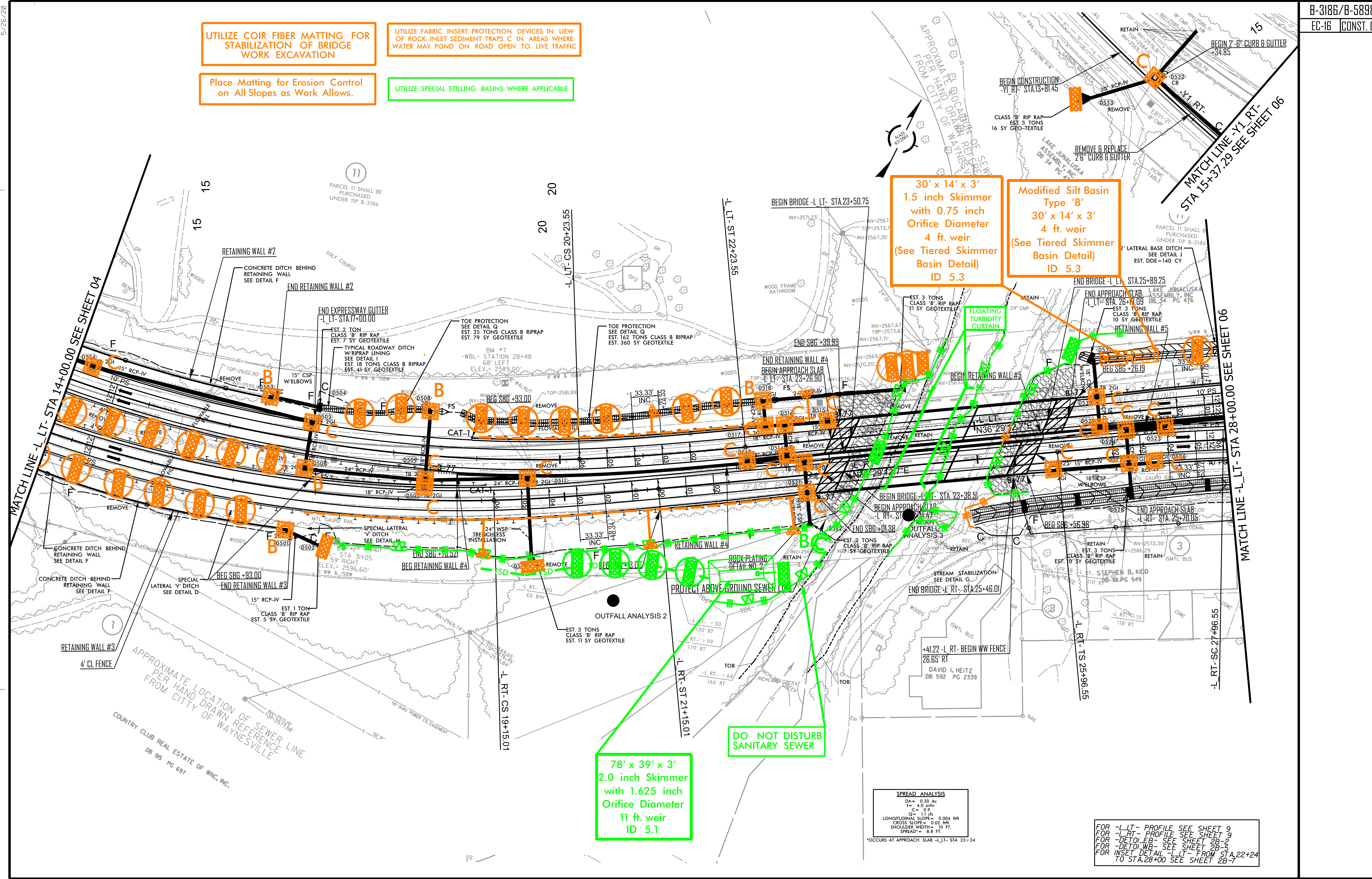
DO NOT DISTURB
SANITARY SEWER

SPREAD ANALYSIS

| | |
|----------------------|-------------|
| DA = | 0.30 Ac |
| I = | 4.0 in/hr |
| C = | 0.9 |
| Q = | 1.1 cfs |
| LONGITUDINAL SLOPE = | 0.004 ft/ft |
| CROSS SLOPE = | 0.02 ft/ft |
| SHOULDER WIDTH = | 10 FT. |
| SPREAD = | 8.8 FT. |

*OCCURS AT APPROACH SLAB -L-LT- STA. 23+24

FOR -L-LT- PROFILE SEE SHEET 9
FOR -L-RT- PROFILE SEE SHEET 9
FOR -DETOUR- SEE SHEET 2B-2
FOR -DETOUR- SEE SHEET 2B-3
FOR INSET DETAIL -L-LT- FROM STA. 22+24 TO STA. 28+00 SEE SHEET 2B-7



5/26/20