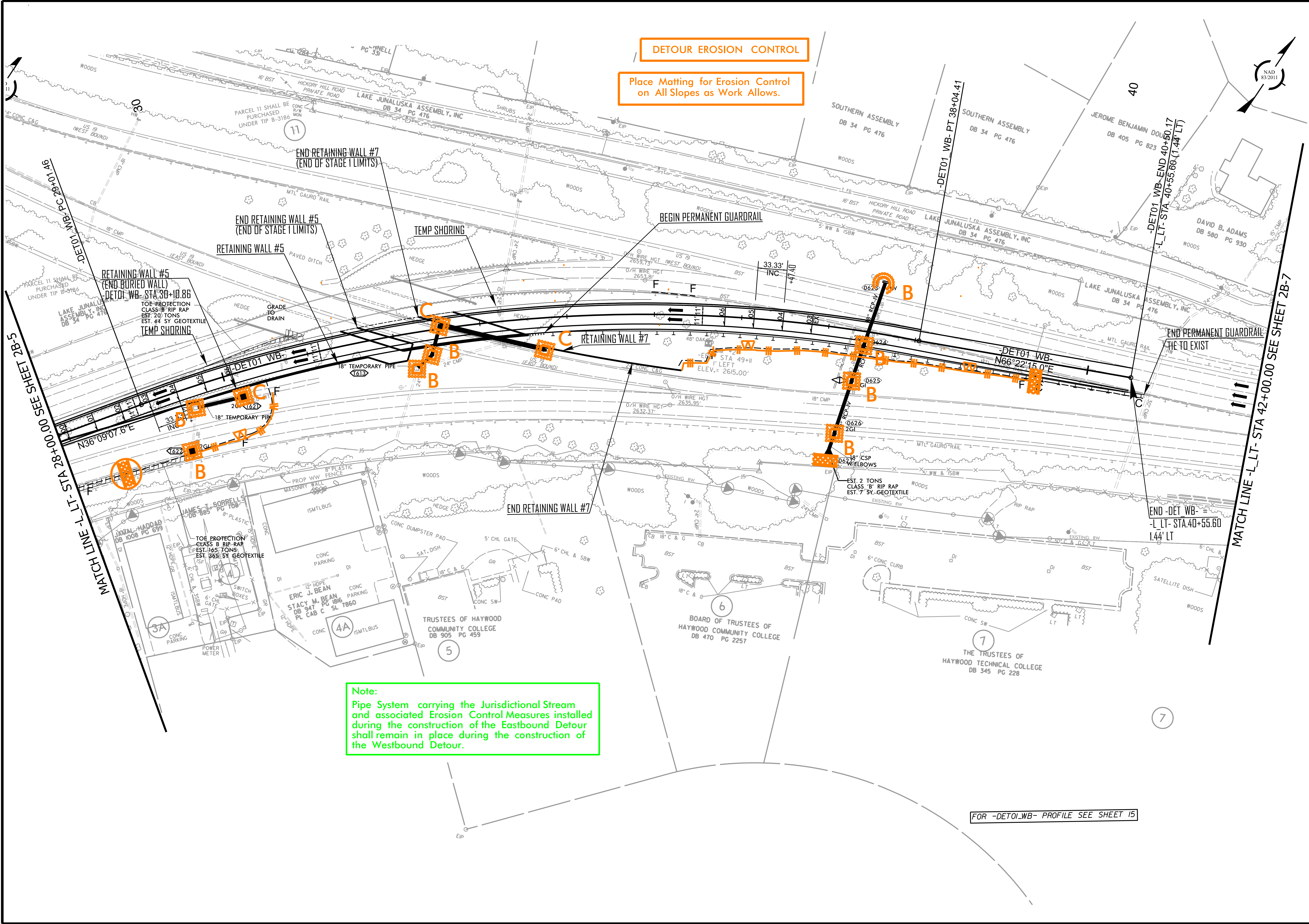


DETOUR EROSION CONTROL

Place Matting for Erosion Control on All Slopes as Work Allows.



Note:
Pipe System carrying the Jurisdictional Stream and associated Erosion Control Measures installed during the construction of the Eastbound Detour shall remain in place during the construction of the Westbound Detour.

FOR -DETO1-WB- PROFILE SEE SHEET 15

MATCH LINE - L - LT - STA 28+00.00 SEE SHEET 2B-5

MATCH LINE - L - LT - STA 42+00.00 SEE SHEET 2B-7