

DETOUR EROSION CONTROL

Place Matting for Erosion Control on All Slopes as Work Allows.

UTILIZE PUMP AROUND OPERATION AS NEEDED TO MANAGE JURISDICTIONAL FLOW DURING CONSTRUCTION OF DETOUR DRAINAGE SYSTEM.

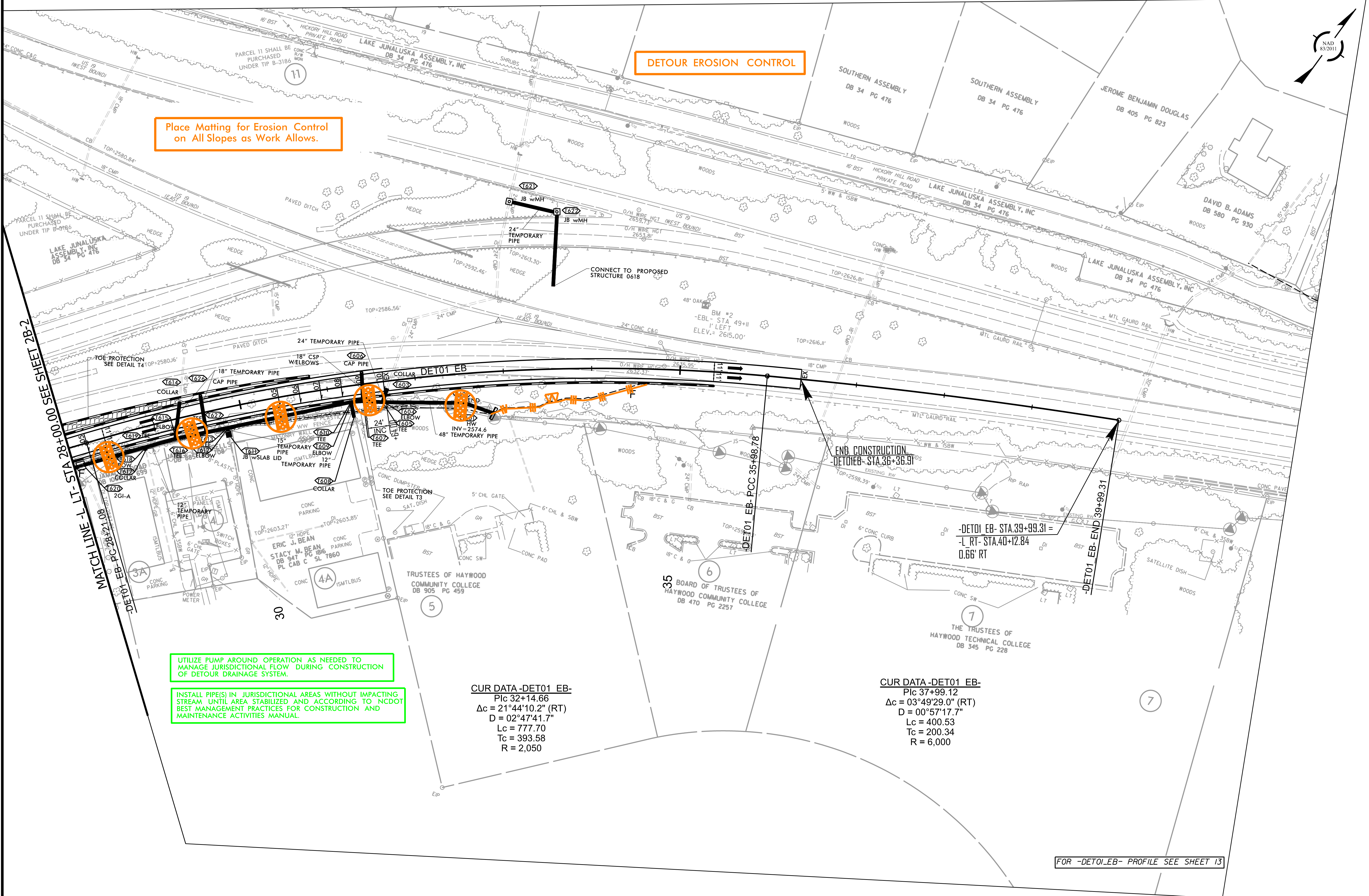
INSTALL PIPE(S) IN JURISDICTIONAL AREAS WITHOUT IMPACTING STREAM UNTIL AREA STABILIZED AND ACCORDING TO NCDOT BEST MANAGEMENT PRACTICES FOR CONSTRUCTION AND MAINTENANCE ACTIVITIES MANUAL.

CUR DATA -DETO1 EB-
 P/c 32+14.66
 $\Delta c = 21^{\circ}44'10.2''$ (RT)
 D = $02^{\circ}47'41.7''$
 Lc = 777.70
 Tc = 393.58
 R = 2,050

CUR DATA -DETO1 EB-
 P/c 37+99.12
 $\Delta c = 03^{\circ}49'29.0''$ (RT)
 D = $00^{\circ}57'17.7''$
 Lc = 400.53
 Tc = 200.34
 R = 6,000

FOR -DETO1.EB- PROFILE SEE SHEET 13

MATCH LINE - LT - STA 28+00.00 SEE SHEET 2B-2



END CONSTRUCTION
 DETOUR EB - STA. 36+36.91

-DETO1 EB- STA. 39+99.31 =
 -L RT- STA. 40+12.84
 0.66' RT

TOE PROTECTION
 SEE DETAIL T4

TOE PROTECTION
 SEE DETAIL T3

2G1-A

37A

30

5

35

6

7

7

2G1-A

37A

30

5

35

6

7

7

2G1-A

37A

30

5

35

6

7

7