

MATCH LINE - L - LT - STA 14+00.00 SEE SHEET 2B-1

MATCH LINE - L - LT - STA 28+00.00 SEE SHEET 2B-3

**DETOUR EROSION CONTROL**

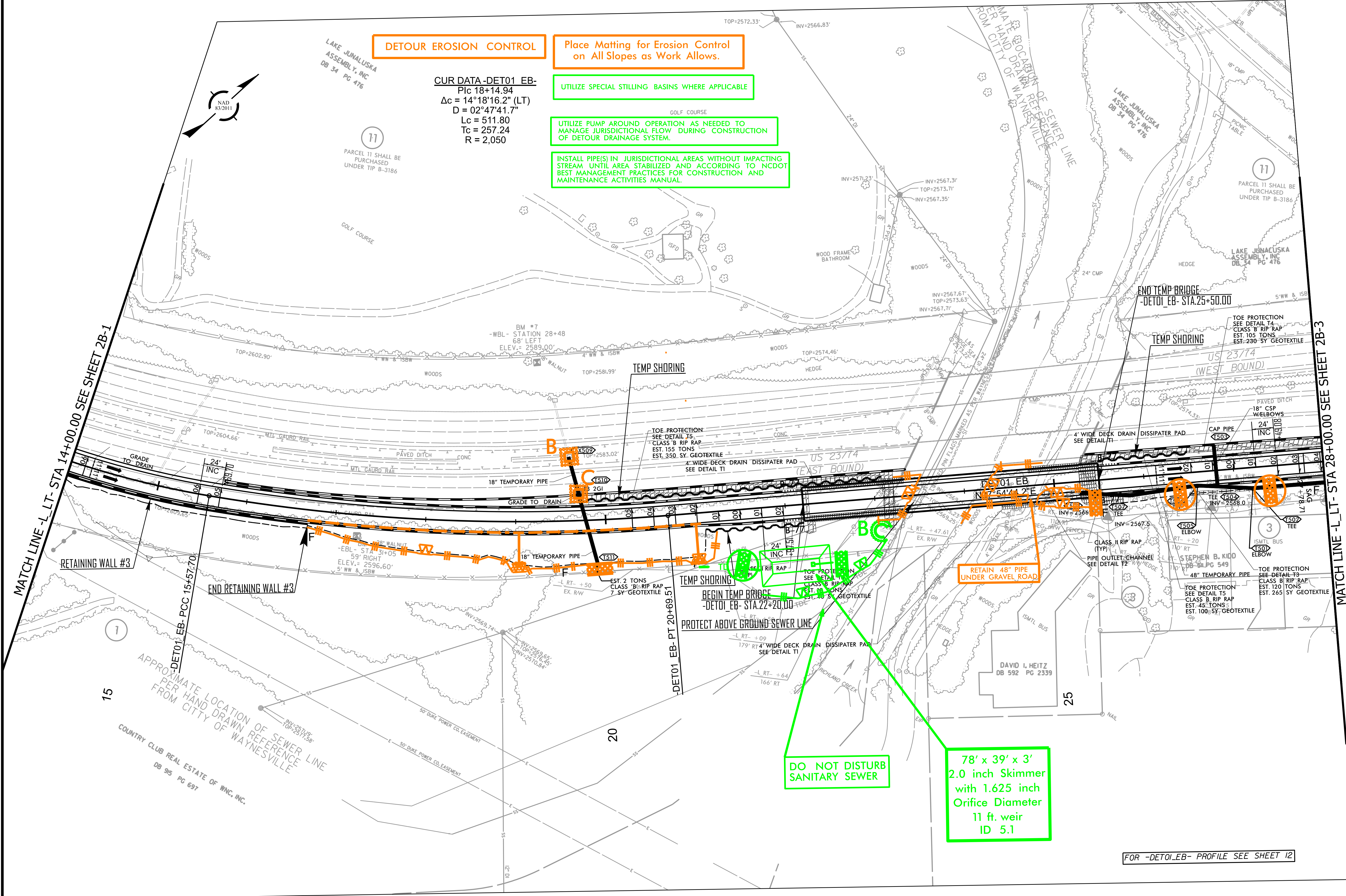
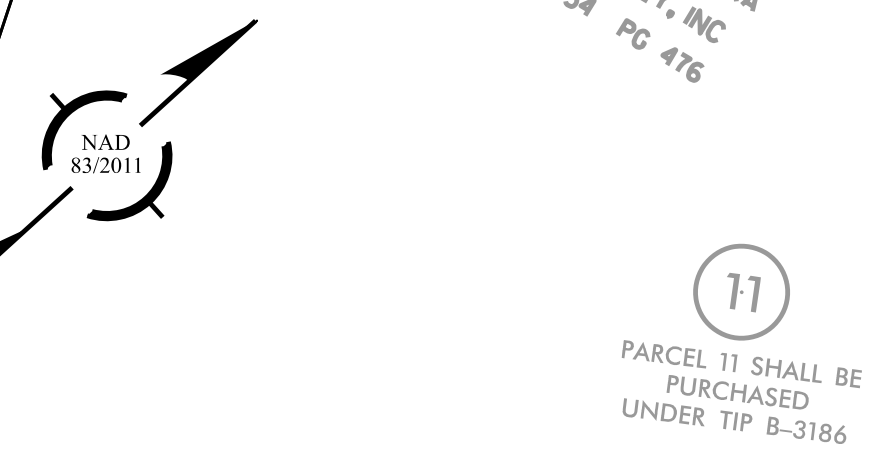
Place Matting for Erosion Control on All Slopes as Work Allows.

UTILIZE SPECIAL STILLING BASINS WHERE APPLICABLE

UTILIZE PUMP AROUND OPERATION AS NEEDED TO MANAGE JURISDICTIONAL FLOW DURING CONSTRUCTION OF DETOUR DRAINAGE SYSTEM.

INSTALL PIPE(S) IN JURISDICTIONAL AREAS WITHOUT IMPACTING STREAM UNTIL AREA STABILIZED AND ACCORDING TO NCDOT BEST MANAGEMENT PRACTICES FOR CONSTRUCTION AND MAINTENANCE ACTIVITIES MANUAL.

**CUR DATA-DETO1 EB-**  
P/c 18+14.94  
 $\Delta c = 14^{\circ}18'16.2''$  (LT)  
 $D = 02^{\circ}47'41.7''$   
Lc = 511.80  
Tc = 257.24  
R = 2,050



DO NOT DISTURB SANITARY SEWER

78' x 39' x 3'  
2.0 inch Skimmer  
with 1.625 inch  
Orifice Diameter  
11 ft. weir  
ID 5.1

FOR -DETO1\_EB- PROFILE SEE SHEET 12

APPROXIMATE LOCATION OF SEWER LINE PER HAND DRAWN REFERENCE FROM CITY OF WAYNESVILLE  
COUNTRY CLUB REAL ESTATE OF WNC, INC.  
DB 95 PG 697

RETAINING WALL #3  
END RETAINING WALL #3

DETO1\_EB-PCC 15+57.70

DETO1\_EB-PT 20+69.51

END TEMP BRIDGE  
-DETO1\_EB- STA.25+50.00

BEGIN TEMP BRIDGE  
-DETO1\_EB- STA.22+20.00

TEMP SHORING  
US 23774 (WEST BOUND)

TEMP SHORING

RETAIN 48" PIPE UNDER GRAVEL ROAD

TOE PROTECTION SEE DETAIL T4  
CLASS B RIP RAP  
EST. 155 TONS  
4' WIDE DECK DRAIN DISSIPATER PAD  
SEE DETAIL T1

4' WIDE DECK DRAIN DISSIPATER PAD  
SEE DETAIL T1

TOE PROTECTION SEE DETAIL T5  
CLASS B RIP RAP  
EST. 45 TONS  
EST. 100 SY GEOTEXTILE

TOE PROTECTION SEE DETAIL T3  
CLASS B RIP RAP  
EST. 120 TONS  
EST. 265 SY GEOTEXTILE

TOE PROTECTION SEE DETAIL T2  
CLASS B RIP RAP  
EST. 350 TONS  
4' WIDE DECK DRAIN DISSIPATER PAD  
SEE DETAIL T1

TOE PROTECTION SEE DETAIL T4  
CLASS B RIP RAP  
EST. 105 TONS  
EST. 290 SY GEOTEXTILE

TOE PROTECTION SEE DETAIL T4  
CLASS B RIP RAP  
EST. 105 TONS  
EST. 290 SY GEOTEXTILE

PARCEL 11 SHALL BE PURCHASED UNDER TIP B-3186

LAKE JUNALUSKA ASSEMBLY, INC  
DB 34 PG 476

LAKE JUNALUSKA ASSEMBLY, INC  
DB 34 PG 476

LAKE JUNALUSKA ASSEMBLY, INC  
DB 34 PG 476

STATE BOARD OF SEWER LINE PER HAND DRAWN REFERENCE FROM CITY OF WAYNESVILLE

DAVID I. HEITZ  
DB 592 PG 2339

STEPHEN B. KIDD  
DB 511 PG 549

BM #7  
-WBL- STATION 28+48  
68' LEFT  
ELEV. = 2589.00'

GRADE TO DRAIN

GRADE TO DRAIN

GRADE TO DRAIN

GRADE TO DRAIN

GRADE TO DRAIN

GRADE TO DRAIN

GRADE TO DRAIN

GRADE TO DRAIN

GRADE TO DRAIN

GRADE TO DRAIN

GRADE TO DRAIN

GRADE TO DRAIN

GRADE TO DRAIN

GRADE TO DRAIN

GRADE TO DRAIN

GRADE TO DRAIN

RETAINING WALL #3

RETAINING WALL #3

RETAINING WALL #3

RETAINING WALL #3

RETAINING WALL #3

RETAINING WALL #3

RETAINING WALL #3

RETAINING WALL #3

RETAINING WALL #3

RETAINING WALL #3

RETAINING WALL #3

RETAINING WALL #3

RETAINING WALL #3

RETAINING WALL #3

RETAINING WALL #3

RETAINING WALL #3

RETAINING WALL #3

RETAINING WALL #3

RETAINING WALL #3

RETAINING WALL #3

RETAINING WALL #3

RETAINING WALL #3

RETAINING WALL #3

RETAINING WALL #3

RETAINING WALL #3

RETAINING WALL #3

RETAINING WALL #3

RETAINING WALL #3

RETAINING WALL #3

RETAINING WALL #3

RETAINING WALL #3

RETAINING WALL #3

RETAINING WALL #3

RETAINING WALL #3

RETAINING WALL #3

RETAINING WALL #3

RETAINING WALL #3

RETAINING WALL #3

RETAINING WALL #3

RETAINING WALL #3

RETAINING WALL #3

RETAINING WALL #3

RETAINING WALL #3

RETAINING WALL #3

RETAINING WALL #3

RETAINING WALL #3

RETAINING WALL #3

RETAINING WALL #3

RETAINING WALL #3

RETAINING WALL #3

RETAINING WALL #3

RETAINING WALL #3

RETAINING WALL #3

RETAINING WALL #3

RETAINING WALL #3

RETAINING WALL #3

RETAINING WALL #3

RETAINING WALL #3

RETAINING WALL #3

RETAINING WALL #3

RETAINING WALL #3

RETAINING WALL #3

RETAINING WALL #3

RETAINING WALL #3

RETAINING WALL #3

RETAINING WALL #3

RETAINING WALL #3

RETAINING WALL #3

RETAINING WALL #3

RETAINING WALL #3

RETAINING WALL #3

RETAINING WALL #3

RETAINING WALL #3

RETAINING WALL #3

RETAINING WALL #3

RETAINING WALL #3

RETAINING WALL #3

RETAINING WALL #3

RETAINING WALL #3

RETAINING WALL #3