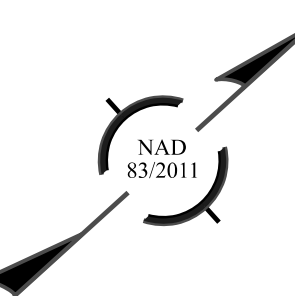


LAKE JUNALUSKA  
ASSEMBLY, INC  
DB 34 PG 476

**CUR DATA -DET01 EB-**  
P/c 18+14.94  
 $\Delta c = 14^{\circ}18'16.2"$  (LT)  
D = 02°47'41.7"  
Lc = 511.80  
Tc = 257.24  
R = 2,050

11  
PARCEL 11 SHALL BE  
PURCHASED  
UNDER TIP B-3186

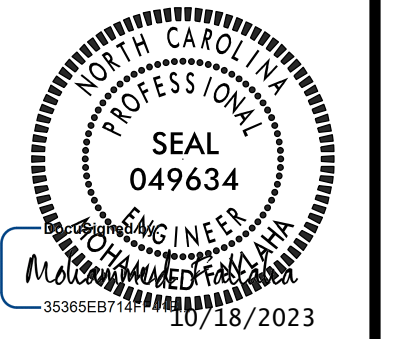


B-3186 / B-5898

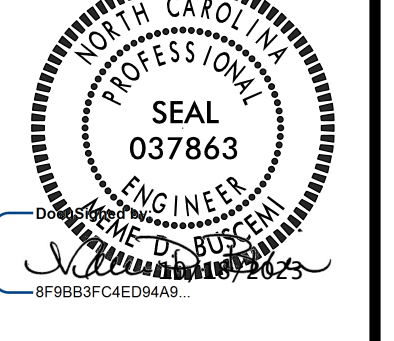
2B-2

NORTH CAROLINA  
DEPARTMENT OF TRANSPORTATION  
HAYWOOD COUNTY

ROADWAY DESIGN UNIT  
ROADWAY DESIGN  
ENGINEER



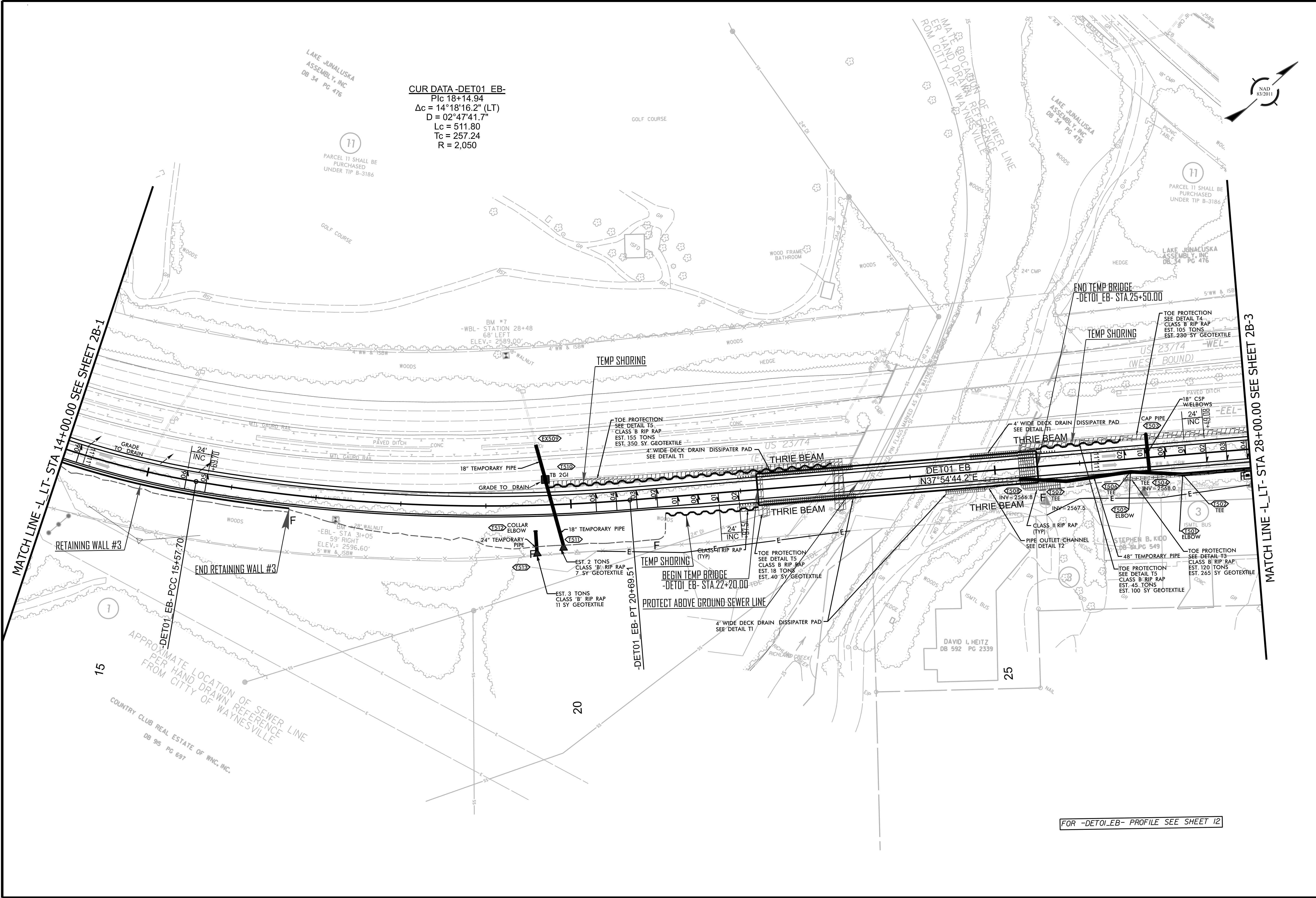
HYDRAULICS  
ENGINEER



PREPARED BY  
**AECOM**

NC FIRM LICENSE No: F-0342  
5438 Wade Park Boulevard, Suite 200  
Raleigh, NC 27601  
(919) 854-6200 / (919) 854-6259 (FAX)

DOCUMENT NOT CONSIDERED FINAL  
UNLESS ALL SIGNATURES COMPLETED



MATCH LINE -L- LT- STA 14+00.00 SEE SHEET 2B-1

MATCH LINE -L- LT- STA 28+00.00 SEE SHEET 2B-3

15  
APPROXIMATE LOCATION OF SEWER LINE  
PER HAND DRAWN REFERENCE  
FROM CITY OF WAYNESVILLE  
DB 95 PG 697  
COUNTRY CLUB REAL ESTATE OF WNC, INC.

FOR -DET01.EB- PROFILE SEE SHEET 12

REVISIONS