

09/08/09

TIP PROJECT: B-5981

STATE OF NORTH CAROLINA
DIVISION OF HIGHWAYS

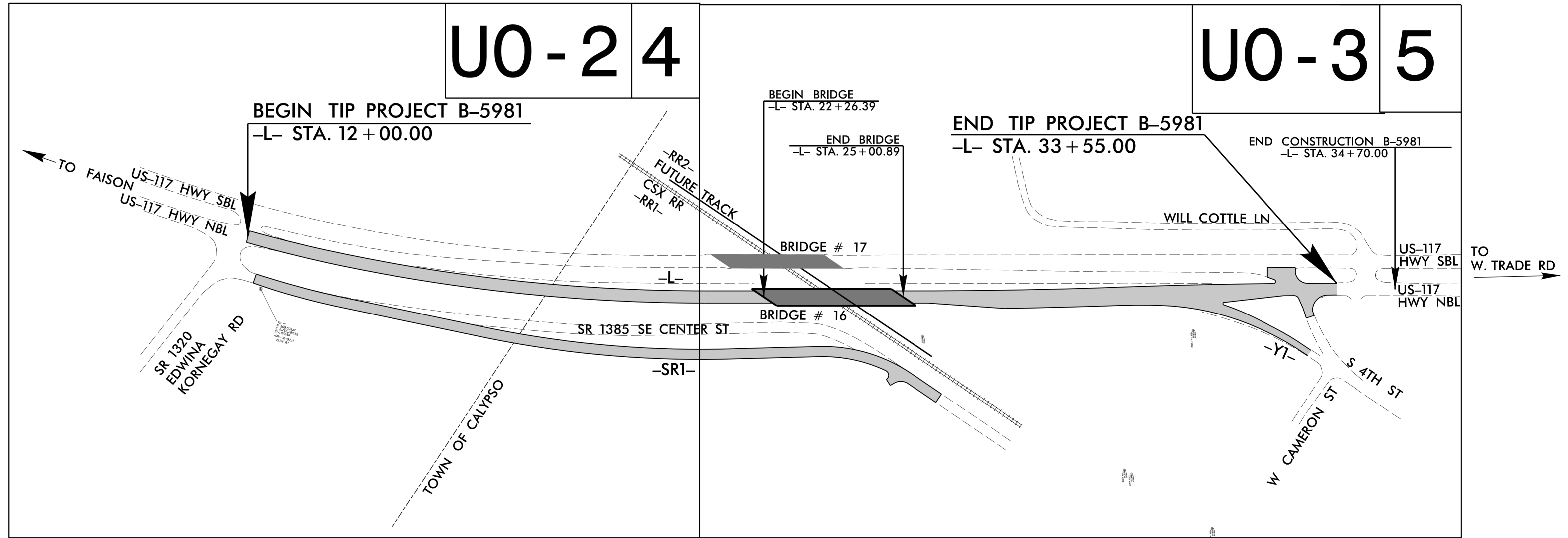
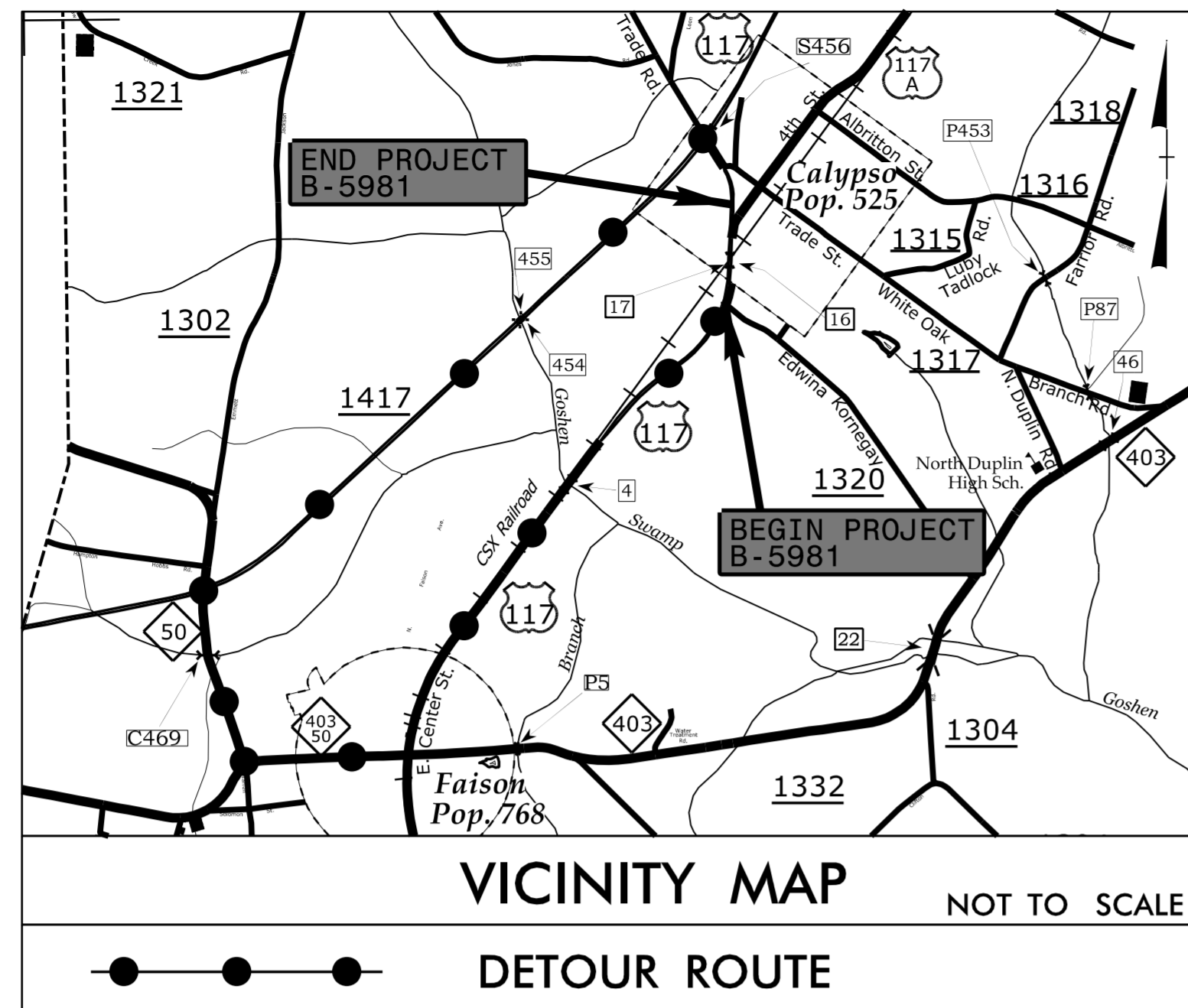
T.I.P. NO.	SHEET NO.
B-5981	UO-1

NOTE:
ALL UTILITY WORK SHOWN ON THIS SHEET WILL BE DONE BY OTHERS.
NO PAYMENT WILL BE MADE TO THE CONTRACTOR FOR UTILITY WORK SHOWN ON THIS SHEET.

UTILITIES BY OTHERS PLANS DUPLIN COUNTY

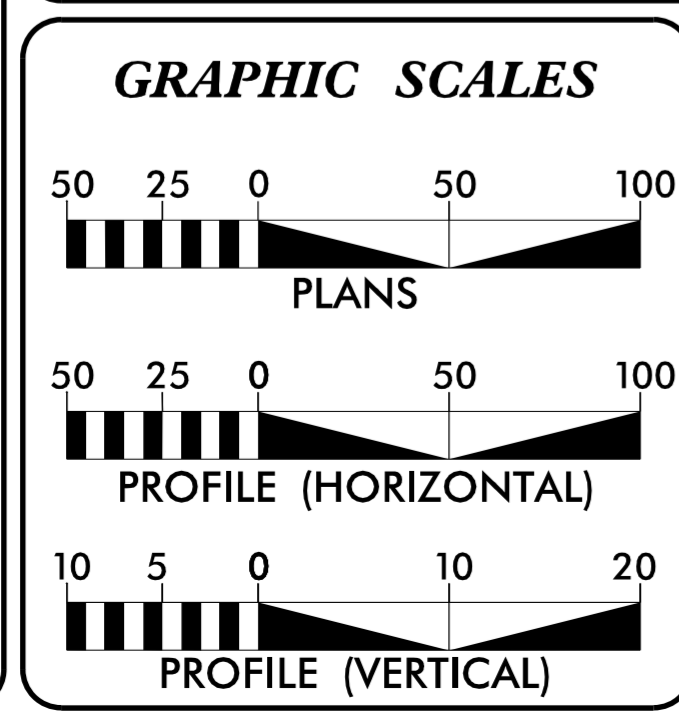
LOCATION: BRIDGE NO.16 OVER CSX RAILROAD ON
US-117 NORTH BOUND LANES AND
PRESERVATION OF BRIDGE NO.17 OVER CSX RAILROAD

TYPE OF WORK: POWER RELOCATION



THE PROJECT IS WITHIN MUNICIPAL BOUNDARIES OF CALYPSO.
THIS IS A CONTROLLED-ACCESS FACILITY WITH ACCESS LIMITED TO INTERCHANGES OR AT GRADE INTERSECTIONS.

CONTRACT:



INDEX OF SHEETS	
SHEET NO.:	DESCRIPTION:
UO-1	TITLE SHEET
UO-2 THRU UO-3	UBO PLAN SHEETS

UTILITY OWNERS WITH CONFLICTS
(A) POWER - DUKE ENERGY

PREPARED IN THE OFFICE OF:
CH ENGINEERING
DIVISION OF PENNONI
5430 WADE PARK BLVD., SUITE 106,
RALEIGH, NC 27607 PHONE: 919.929.1173
FAX: 919.493.6548 NC LICENSE #P-0189

MARY JO LEE, PE UTILITY PROJECT MANAGER
ERIC TWEED, PE PROJECT UTILITY COORDINATOR

**DIVISION OF HIGHWAYS
UTILITIES UNIT**
1555 MAIL SERVICES CENTER
RALEIGH, NC 27699-1555
PHONE (919) 707-6690
FAX (919) 250-4151

NABIL HAMDAN UTILITIES REGIONAL ENGINEER
TANGA SAMPSON REGIONAL UTILITY COORDINATOR
TYRON STALLINGS UTILITIES COORDINATOR

11/7/2023 R:\Utilities\Engineering\U00\Proj\B5981\ut_tsh_U001.psh.dgn USERNAME:

NAD 83 / NA 2011

UTILITIES BY OTHERS

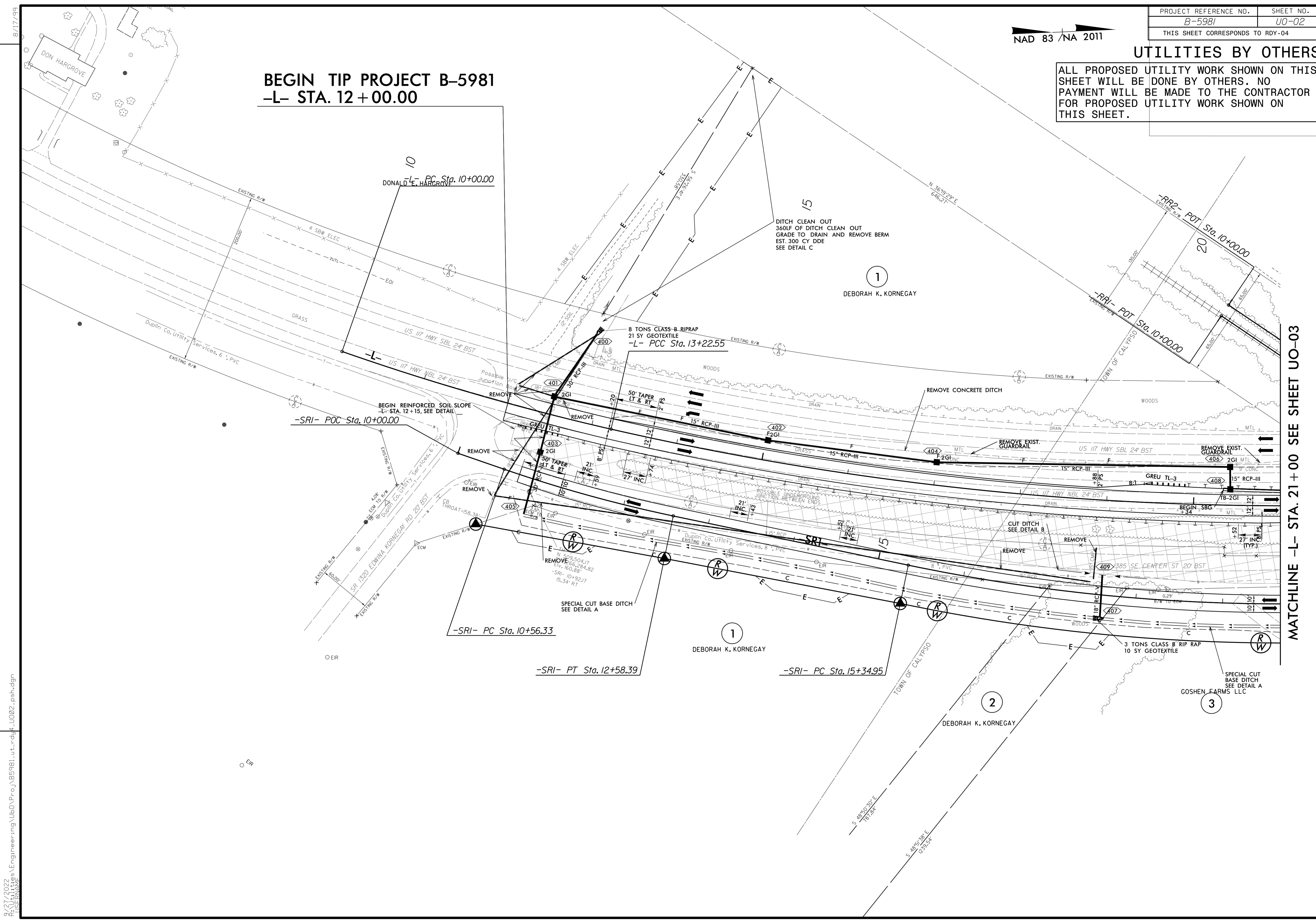
ALL PROPOSED UTILITY WORK SHOWN ON THIS SHEET WILL BE DONE BY OTHERS. NO PAYMENT WILL BE MADE TO THE CONTRACTOR FOR PROPOSED UTILITY WORK SHOWN ON THIS SHEET.

BEGIN TIP PROJECT B-5981
-L- STA. 12+00.00

8/17/99

REVISIONS

MATCHLINE -L- STA. 21+00 SEE SHEET UO-03



2/27/2022
 I:\ENGINEERING\U00\PROJ\B5981\UO-02\UO02.psh.dgn
 8/17/99

NAD 83 / NA 2011

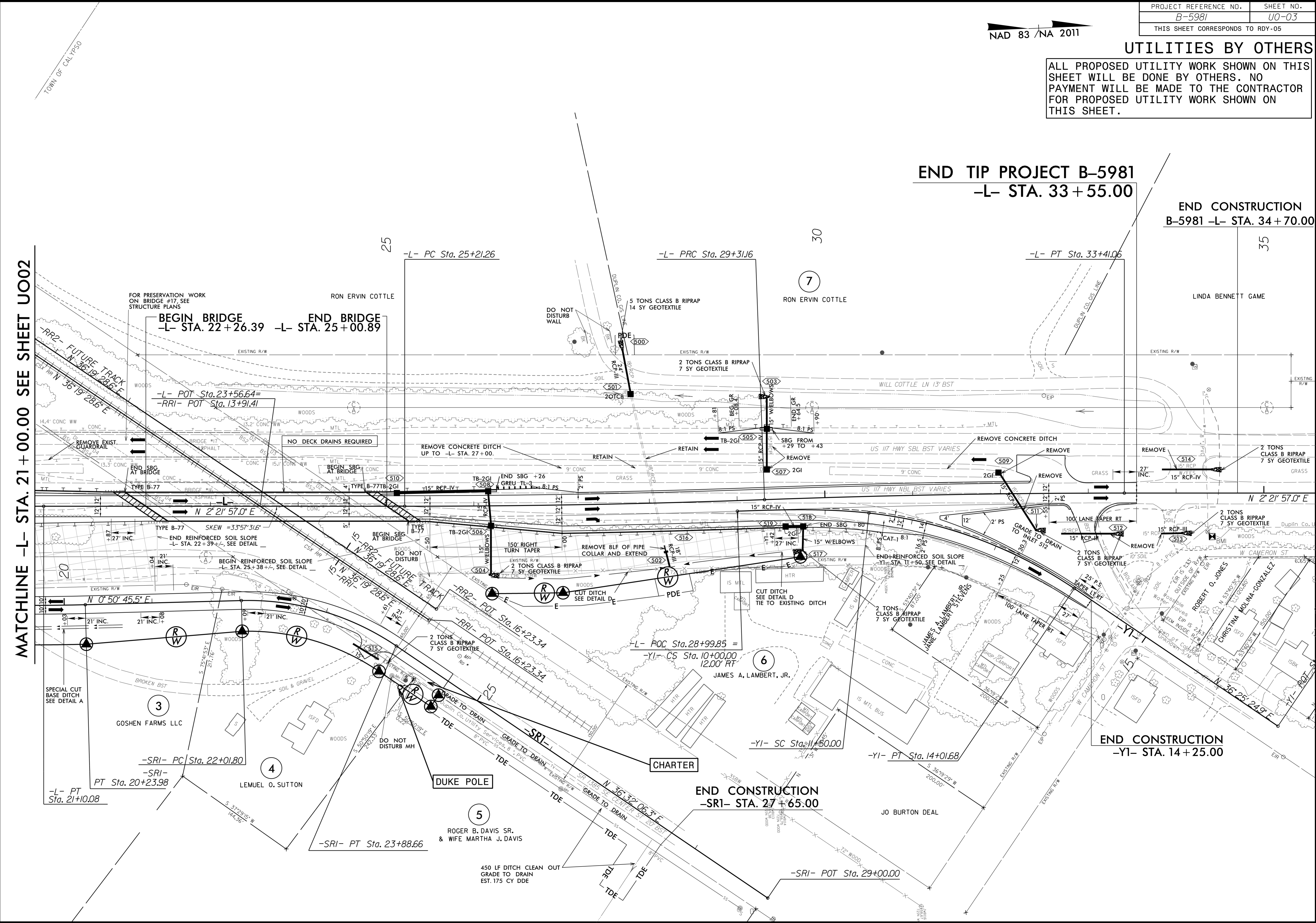
UTILITIES BY OTHERS

ALL PROPOSED UTILITY WORK SHOWN ON THIS SHEET WILL BE DONE BY OTHERS. NO PAYMENT WILL BE MADE TO THE CONTRACTOR FOR PROPOSED UTILITY WORK SHOWN ON THIS SHEET.

END TIP PROJECT B-5981
-L- STA. 33+55.00

END CONSTRUCTION
B-5981 -L- STA. 34+70.00

MATCHLINE -L- STA. 21+00.00 SEE SHEET U002



REVISIONS

8/17/99

2/29/2022
 R:\ENGINEERING\U003\Proje\B5981\U0-03\U003-pshdgn

SPECIAL CUT
 BASE DITCH
 SEE DETAIL A

3
 GOSHEN FARMS LLC

4
 LEMUEL O. SUTTON

DUKE POLE

5
 ROGER B. DAVIS SR.
 & WIFE MARTHA J. DAVIS

CHARTER

END CONSTRUCTION
-SRI- STA. 27+65.00

JO BURTON DEAL

END CONSTRUCTION
-YI- STA. 14+25.00

35

30

7

6

20

25

TOWN OF CALYPSO

FOR PRESERVATION WORK
 ON BRIDGE #17, SEE
 STRUCTURE PLANS

BEGIN BRIDGE
-L- STA. 22+26.39 **END BRIDGE**
-L- STA. 25+00.89

-L- POT Sta. 23+56.64=
 -RR1- POT Sta. 13+91.41

-L- PC Sta. 25+21.26

-L- PRC Sta. 29+31.16

-L- PT Sta. 33+41.06

NO DECK DRAINS REQUIRED

REMOVE CONCRETE DITCH
 UP TO -L- STA. 27+00.

REMOVE CONCRETE DITCH

REMOVE

END REINFORCED SOIL SLOPE
 -L- STA. 22+39+4, SEE DETAIL

BEGIN REINFORCED SOIL SLOPE
 -L- STA. 25+38+4, SEE DETAIL

150' RIGHT
 TURN TAPER

REMOVE 8LF OF PIPE
 COLLAR AND EXTEND

END REINFORCED SOIL SLOPE
 -YI- STA. 11+50, SEE DETAIL

-L- PT
 Sta. 21+10.08

-SRI- PC
 Sta. 22+01.80

-SRI-
 PT Sta. 20+23.98

-SRI- PT
 Sta. 23+88.66

450 LF DITCH CLEAN OUT
 GRADE TO DRAIN
 EST. 175 CY DDE

-L- POC Sta. 28+99.85 =
 -YI- CS Sta. 10+00.00
 12.00' RT

-YI- SC Sta. 11+50.00

-YI- PT
 Sta. 14+01.68

-SRI- POT
 Sta. 29+00.00

REMOVE EXIST.
 GUARDRAIL

END S.B.G.
 AT BRIDGE

BEGIN S.B.G.
 AT BRIDGE

END S.B.G. +26
 GREU TL-3

END S.B.G. +26
 GREU TL-3

END S.B.G. +80

END S.B.G. +80

END S.B.G. +80

END S.B.G. +80

END S.B.G. +80

REMOVE EXIST.
 GUARDRAIL

END S.B.G.
 AT BRIDGE

BEGIN S.B.G.
 AT BRIDGE

END S.B.G. +26
 GREU TL-3

END S.B.G. +26
 GREU TL-3

END S.B.G. +80

END S.B.G. +80

END S.B.G. +80

END S.B.G. +80

END S.B.G. +80