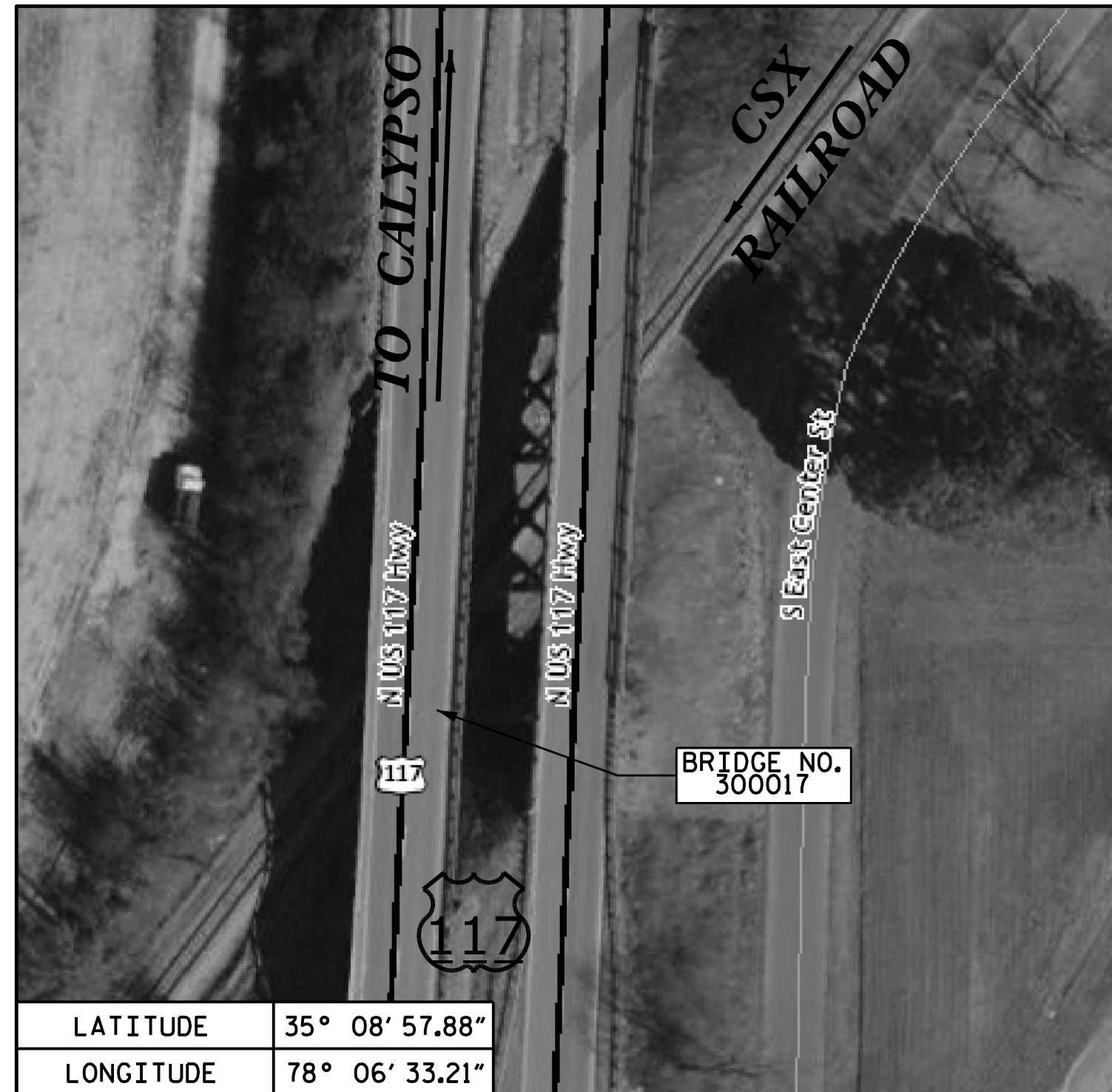


GENERAL NOTES:



LATITUDE	35° 08' 57.88"
LONGITUDE	78° 06' 33.21"

LOCATION SKETCH

INFORMATION INDICATED ON THE LOCATION SKETCH SHALL BE CONSIDERED GENERAL INFORMATION ONLY. THE CONTRACTOR SHALL CONFIRM, THROUGH OTHER SOURCES, SPECIFIC INFORMATION REGARDING THE BRIDGES, ROADWAYS, UTILITIES, THE SURROUNDING AREA, AND ANY OTHER ASPECTS THAT MAY BE NECESSARY TO PERFORM AND COMPLETE THE PROJECT.

THE CONTRACTOR'S ATTENTION IS CALLED TO THE FACT THAT DUE TO THE NATURE OF PRESERVATION PROJECTS, THE EXTENT OF WORK CANNOT ALWAYS BE ACCURATELY DETERMINED PRIOR TO COMMENCEMENT OF WORK. REPAIR LOCATIONS AND ESTIMATES OF QUANTITIES ARE GIVEN WITH THE BEST INFORMATION AVAILABLE. IF ADDITIONAL REPAIRS NOT SHOWN ON THE DRAWINGS ARE DEEMED NECESSARY BY THE ENGINEER, THE ENGINEER SHALL NOTE ON THE DRAWINGS THE APPROXIMATE LOCATION AND DESCRIPTION OF THE REPAIRS.

EXISTING DIMENSIONS AND BRIDGE CONDITION ARE FROM THE BEST INFORMATION AVAILABLE. THE CONTRACTOR SHALL FIELD VERIFY THE INFORMATION SHOWN ON THE PLANS AND NOTIFY THE ENGINEER IF ACTUAL DIMENSIONS AND CONDITIONS DIFFER.

THE CONTRACTOR SHALL HAVE NO CLAIM WHATSOEVER AGAINST THE DEPARTMENT FOR ANY DELAYS OF ADDITIONAL COST INCURRED BASED ON DIFFERENCES BETWEEN WHAT IS SHOWN ON THE PLANS AND THE ACTUAL CONDITIONS AT THE PROJECT SITE.

IT IS THE CONTRACTOR'S RESPONSIBILITY TO FOLLOW ALL STATE AND FEDERAL SAFETY REQUIREMENTS.

WORK ON THE BRIDGE SHALL BE PERFORMED SO AS NOT TO ALLOW DEBRIS TO FALL BELOW, EXCEPT WHERE THE CONTRACTOR PLANS TO USE PLATFORMS, NETS, SCREENS OR OTHER PROTECTIVE DEVICES TO CATCH THE MATERIAL. THE CONTRACTOR SHALL SUBMIT PLANS FOR CONSTRUCTION IN ACCORDANCE WITH ARTICLE 402-2 OF THE STANDARD SPECIFICATIONS AND THE PROJECT SPECIAL PROVISIONS.

THE CONTRACTOR SHALL PERFORM ALL WORK WITH CARE SO THAT THE EXISTING STRUCTURE WHICH IS TO REMAIN IN PLACE WILL NOT BE DAMAGED. IF THE CONTRACTOR DAMAGES ANY PART OF THE EXISTING STRUCTURE WHICH IS TO REMAIN IN PLACE, THE DAMAGED AREA SHALL BE REPAIRED OR REPLACED IN A MANNER SATISFACTORY TO THE ENGINEER AT NO ADDITIONAL COST TO THE DEPARTMENT.

ANY DAMAGE TO EXISTING REINFORCING STEEL, DURING CONTRACTOR'S OPERATIONS, SHALL BE REPAIRED AS DIRECTED BY THE ENGINEER AND PERFORMED AT NO ADDITIONAL COST TO THE DEPARTMENT.

FOR CONTROL OF TRAFFIC AND LIMITS ON PHASING OF CONSTRUCTION, SEE TRANSPORTATION MANAGEMENT PLANS.

PRIOR TO BEGINNING WORK, THE CONTRACTOR SHALL SUBMIT FOR REVIEW AND APPROVAL A COMPLETE SEQUENCE OF TASKS FOR EACH OPERATION AFFECTING THE BRIDGE SURFACE AND/OR TRAFFIC.

FOR OTHER DESIGN DATA AND GENERAL NOTES, SEE SHEET SN.

FOR SUBMITTAL OF WORKING DRAWINGS, SEE SPECIAL PROVISIONS.

FOR FALSEWORK AND FORMWORK, SEE SPECIAL PROVISIONS.

FOR CRANE SAFETY, SEE SPECIAL PROVISIONS.

FOR GROUT FOR STRUCTURES, SEE SPECIAL PROVISIONS.

ALL PAVEMENT MARKINGS WILL BE IN ACCORDANCE WITH THE TRAFFIC CONTROL PLANS.

EXISTING JOINTS AND DECK DRAINS SHALL BE SEALED PRIOR TO BEGINNING SURFACE PREPARATIONS OF THE BRIDGE DECK. THE CONTRACTOR SHALL TAKE CARE THAT ANY CONSTRUCTION DEBRIS THAT COLLECTS IN THE DRAINS IS CONTAINED. DRAINS IN SHOULDERS OF ADJACENT TRAVEL LANE(S) SHALL BE KEPT FREE AND CLEAR OF DEBRIS.

FOR FOAM JOINT SEALS FOR PRESERVATION, SEE SPECIAL PROVISIONS.

FOR BEAM REPAIR PLATING, SEE SPECIAL PROVISIONS.

FOR EPOXY COATING AND DEBRIS REMOVAL, SEE SPECIAL PROVISIONS.

FOR FLOWABLE FILL, SEE SPECIAL PROVISIONS.

FOR POURABLE SILICONE JOINT SEALANT, SEE SPECIAL PROVISIONS.

FOR BEAM REPAIR CUT-OUT, SEE SPECIAL PROVISIONS.

FOR BOLTED BEAM REPAIR, SEE SPECIAL PROVISIONS.

FOR PAINTING CONTAINMENT FOR ZONE PAINTING AND POLLUTION CONTROL, SEE "ZONE PAINTING OF EXISTING STRUCTURE" SPECIAL PROVISION.

FOR ZONE PAINTING OF EXISTING STRUCTURE, SEE SPECIAL PROVISIONS.

FOR SHOTCRETE REPAIRS, SEE SPECIAL PROVISIONS.

FOR CONCRETE REPAIRS, SEE SPECIAL PROVISIONS.

CONCRETE REPAIRS MAY BE SUBSTITUTED IN LIEU OF SHOTCRETE REPAIRS WITH THE APPROVAL OF THE ENGINEER.

FOR EPOXY RESIN INJECTION, SEE SPECIAL PROVISIONS.

FOR CONCRETE DECK REPAIR FOR POLYMER CONCRETE OVERLAY, PLACING AND FINISHING POLYMER CONCRETE OVERLAY, GROOVING BRIDGE FLOORS, POLYESTER POLYMER CONCRETE MATERIALS, AND EPOXY POLYMER CONCRETE MATERIALS, SEE "POLYMER CONCRETE BRIDGE DECK OVERLAY" SPECIAL PROVISION.

FOR SCARIFYING BRIDGE DECK, SHOTBLASTING BRIDGE DECK, AND CLASS II AND CLASS III SURFACE PREPARATION, SEE "OVERLAY SURFACE PREPARATION FOR POLYMER CONCRETE" SPECIAL PROVISION.

FOR BRIDGE JACKING, SEE SPECIAL PROVISIONS.

FOR RAILROAD PROVISIONS, SEE SPECIAL PROVISIONS.

AT THE TIME OF PREPARATION OF THESE PLANS, IT WAS NOT ANTICIPATED THAT THE FOLLOWING ITEM(S) LISTED WOULD BE REQUIRED, HOWEVER, IT MAY BE DETERMINED IN THE FIELD THAT THE FOLLOWING ITEM(S) LISTED, OR OTHER WORK WILL BE NECESSARY TO PROPERLY COMPLETE THE INTENDED BRIDGE PRESERVATION/REHABILITATION WORK. THE CONTRACTOR SHALL BE PREPARED TO PERFORM SUCH WORK IN A TIMELY MANNER, AS DETERMINED IN THE FIELD. SUCH WORK SHALL BE CONSIDERED EXTRA WORK AND SHALL BE ADDRESSED AS PER ARTICLE 104-7 OF THE STANDARD SPECIFICATIONS. PROJECT SPECIAL PROVISIONS THAT OUTLINE REQUIREMENTS FOR THESE POTENTIAL ADDITIONAL WORK ITEMS HAVE BEEN PROVIDED IN THE PROJECT DOCUMENTS, BUT NO QUANTITIES HAVE BEEN LISTED. ACTUAL PAY ITEMS, QUANTITIES, AND COSTS WILL BE ESTABLISHED, AS REQUIRED, IF EXTRA WORK IS ENCOUNTERED.

UNANTICIPATED ITEMS:

ITEM	DESCRIPTION	UNIT
1	CLASS III SURFACE PREPARATION	SQ. YD.
2	BEAM REPAIR CUT-OUT	LBS.
3	BOLTED BEAM REPAIR	LBS.

TOTAL BILL OF MATERIAL

BRIDGE NO. 300017	#57 STONE	INCIDENTAL MILLING	ASPHALT CONCRETE SURFACE COURSE TYPE S9.5B	ASPHALT BINDER FOR PLANT MIX	FLOWABLE FILL	GROOVING BRIDGE FLOORS	POLLUTION CONTROL	4" SLOPE PROTECTION	CLASS II, SURFACE PREPARATION	GEOTEXTILE FOR DRAINAGE	ELASTOMERIC BEARINGS	SHOTCRETE REPAIRS	EPOXY RESIN INJECTION	PAINTING CONTAINMENT FOR ZONE PAINTING
	CU. YD.	SQ. YDS.	TONS	TONS	CU. YD.	SQ. FT.	LUMP SUM	SO. YD.	SO. YD.	SO. YD.	LUMP SUM	CU. FT.	LIN. FT.	LUMP SUM
TOTAL	5.8	1,063.0	90.0	10.0	3.0	5,510.7	LUMP SUM	1,353.0	22.4	52.0	LUMP SUM	240.7	32.0	LUMP SUM

BRIDGE NO. 300017	ZONE PAINTING OF EXISTING STRUCTURE	FOAM JOINT SEALS FOR PRESERVATION	POURABLE SILICONE JOINT SEALANT	POLYESTER POLYMER CONCRETE MATERIALS	EPOXY POLYMER CONCRETE MATERIALS (ALTERNATE)	BEAM REPAIR PLATING	EPOXY COATING	CONCRETE DECK REPAIR FOR POLYMER CONCRETE OVERLAY	PLACING & FINISHING POLYMER CONCRETE OVERLAY	CONCRETE REPAIRS	SCARIFYING BRIDGE DECK	SHOTBLASTING BRIDGE DECK	TYPE I BRIDGE JACKING BRIDGE NO. _____
	LUMP SUM	LIN. FT.	LIN. FT.	CU. YD.	CU. YD.	LBS.	SO. FT.	SO. YD.	SO. YD.	CU. FT.	SO. YD.	SO. YD.	EA.
TOTAL	LUMP SUM	201.0	20.7	41.7	41.7	767.0	720.0	22.4	696.9	0.8	696.9	696.9	32

PROJECT NO. **B-5981**
DUPLIN COUNTY
 BRIDGE NO. **300017**



DocuSigned by:
 William C. Smith
 8A2A2023F0241D

STATE OF NORTH CAROLINA
 DEPARTMENT OF TRANSPORTATION
 RALEIGH

LOCATION SKETCH AND TOTAL BILL OF MATERIAL

REVISIONS						SHEET NO.
NO.	BY:	DATE:	NO.	BY:	DATE:	
1			3			S2-2
2			4			TOTAL SHEETS 31

DRAWN BY : S. T. SANDOR DATE : 1/22/23
 CHECKED BY : W. C. SMITH DATE : 5/31/23

DOCUMENT NOT CONSIDERED FINAL UNLESS ALL SIGNATURES COMPLETED