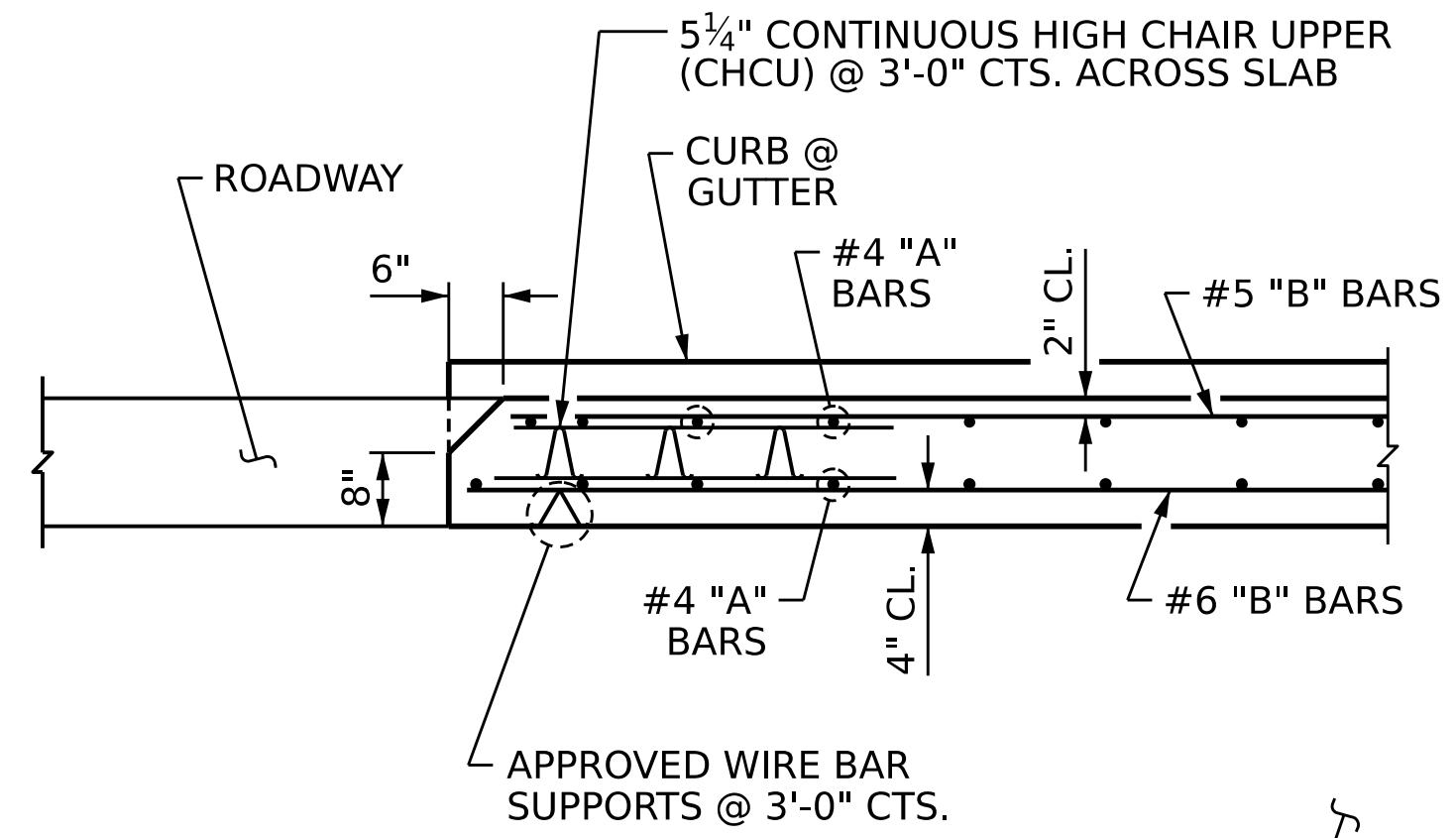


PLAN @ END BENT 1

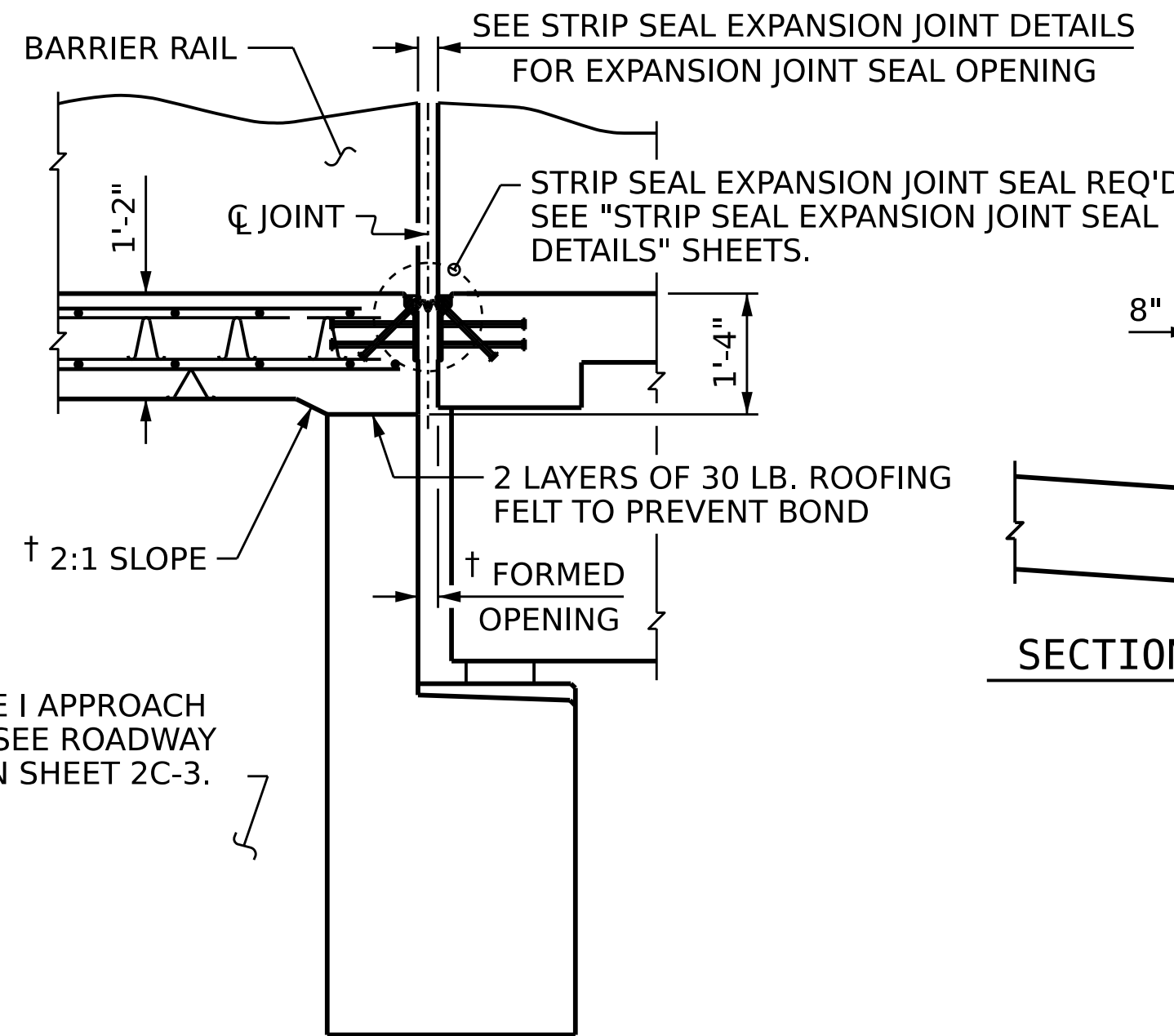
PLAN @ END BENT 2

BILL OF MATERIAL					
APPROACH SLAB AT END BENT 1					
BAR	NO.	SIZE	TYPE	LENGTH	WEIGHT
*A1	30	#4	STR	33'-1"	663
A2	32	#4	STR	33'-1"	707
REINFORCING STEEL				** 2,224 LBS.	
* EPOXY COATED REINFORCING STEEL				** 1,658 LBS.	
CLASS AA CONCRETE				** 23.7 C. Y.	
APPROACH SLAB AT END BENT 2					
BAR	NO.	SIZE	TYPE	LENGTH	WEIGHT
*A1	30	#4	STR	33'-6"	663
A2	32	#4	STR	33'-6"	707
REINFORCING STEEL				** 2,224 LBS.	
* EPOXY COATED REINFORCING STEEL				** 1,658 LBS.	
CLASS AA CONCRETE				** 23.7 C. Y.	

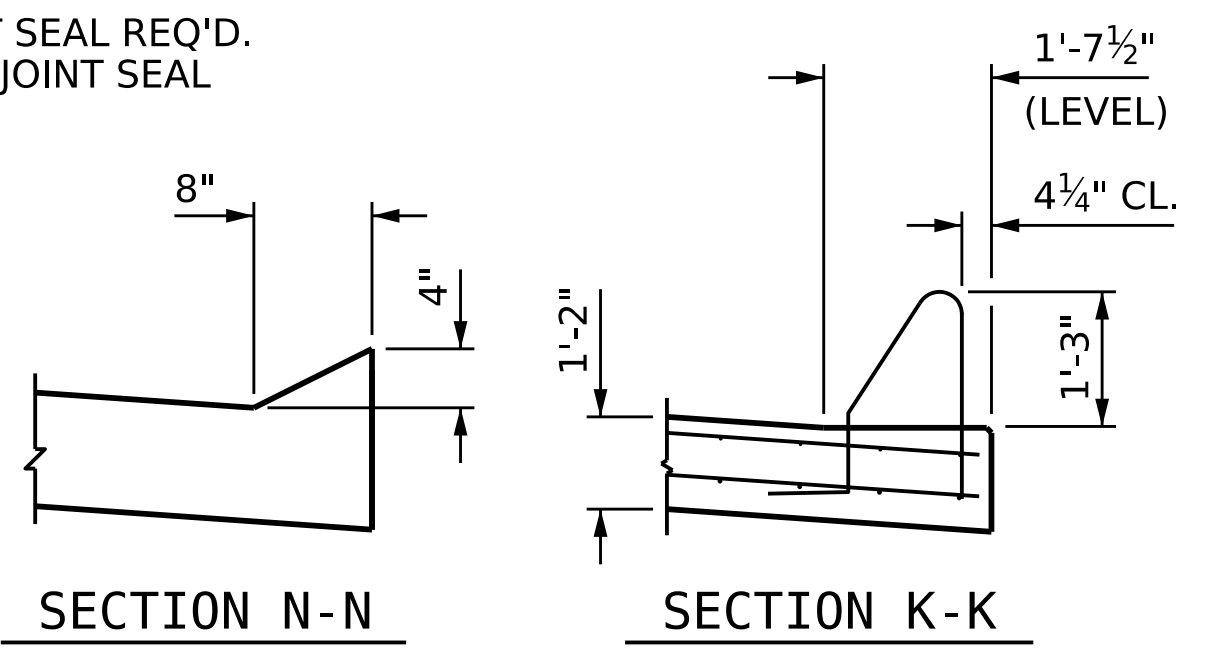
** QUANTITIES FOR CONCRETE BARRIER RAIL ARE NOT INCLUDED. SEE SHEET 2 OF 2.



SECTION THRU SLAB

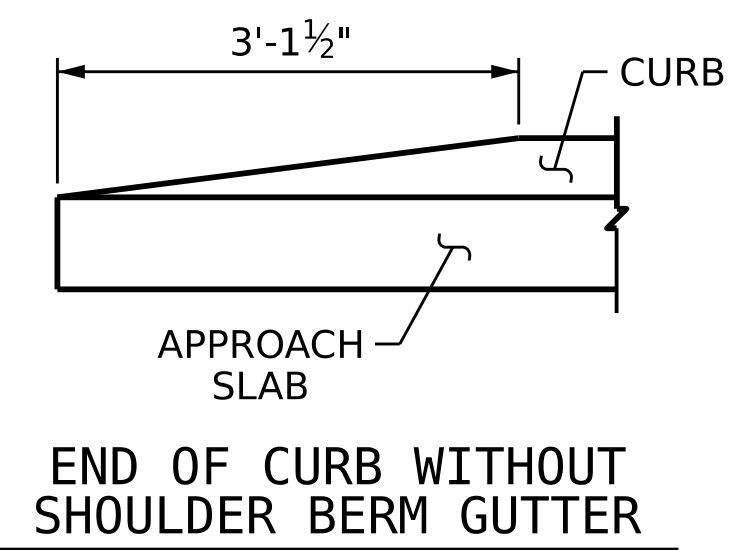


CURB DETAILS



SECTION N-N

SECTION K-K



END OF CURB WITHOUT SHOULDER BERM GUTTER

NOTES

- APPROACH SLAB SHALL NOT BE CONSTRUCTED PRIOR TO COMPLETION OF THE BRIDGE DECK.
- AREA BETWEEN THE WINGWALL AND APPROACH SLAB SHALL BE GRADED TO DRAIN THE WATER AWAY FROM THE FILL FACE OF THE BRIDGE AND SHALL BE PAVED. SEE ROADWAY PLANS.
- FOR STRIP SEAL EXPANSION JOINTS, SEE SPECIAL PROVISIONS.
- FOR BRIDGE APPROACH FILL, SEE ROADWAY PLANS.

SPLICE LENGTHS		
BAR SIZE	EPOXY COATED	UNCOATED
#4	1'-11"	1'-7"
#5	2'-5"	2'-0"
#6	3'-7"	2'-5"

PROJECT NO. **B-5981**
DUPLIN COUNTY
 STATION: **23+56.64 -L-**
 SHEET 1 OF 2



STATE OF NORTH CAROLINA
 DEPARTMENT OF TRANSPORTATION
 RALEIGH
 STANDARD
BRIDGE APPROACH SLAB FOR FLEXIBLE PAVEMENT

DRAWN BY : P. K. NEWTON DATE : 1/30/23
 CHECKED BY : M. K. BEARD DATE : 2/7/23
 DESIGN ENGINEER OF RECORD : W. C. SMITH DATE : 3/8/23

DOCUMENT NOT CONSIDERED FINAL UNLESS ALL SIGNATURES COMPLETED

REVISIONS				SHEET NO.
NO.	BY:	DATE:	NO.	DATE:
1			3	
2			4	

TOTAL SHEETS: 43