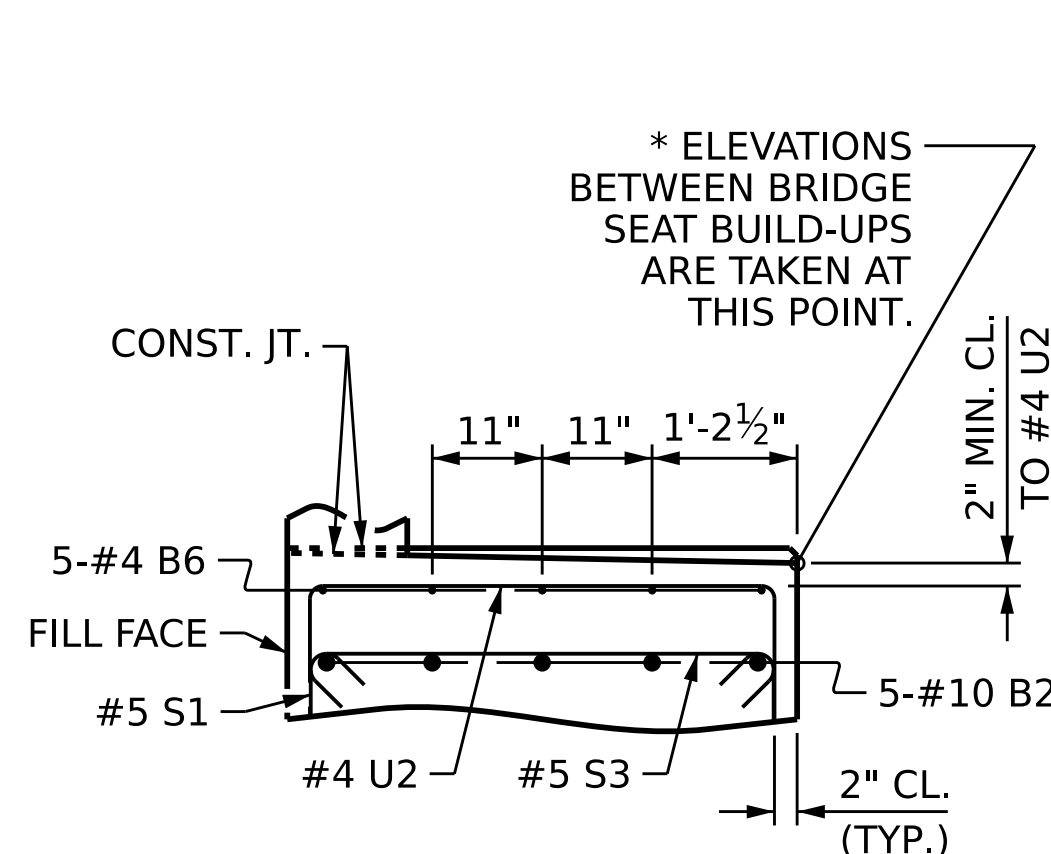
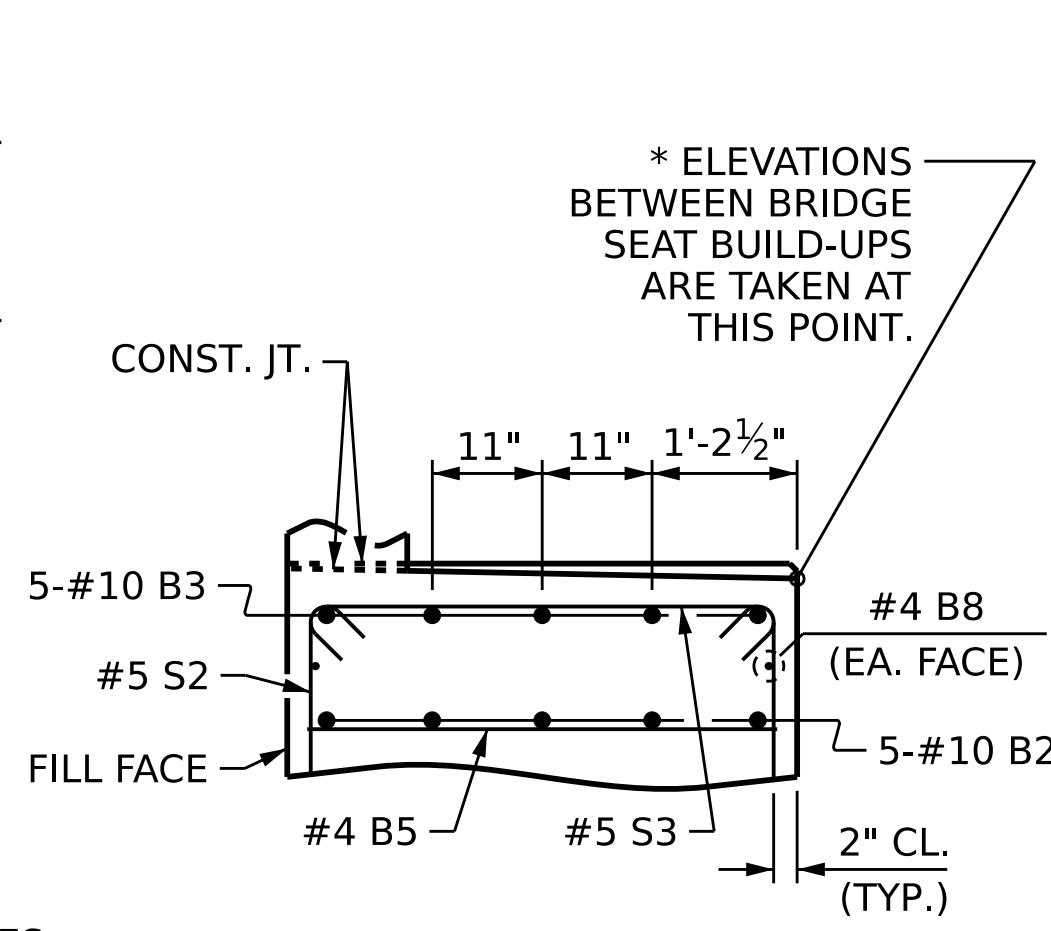


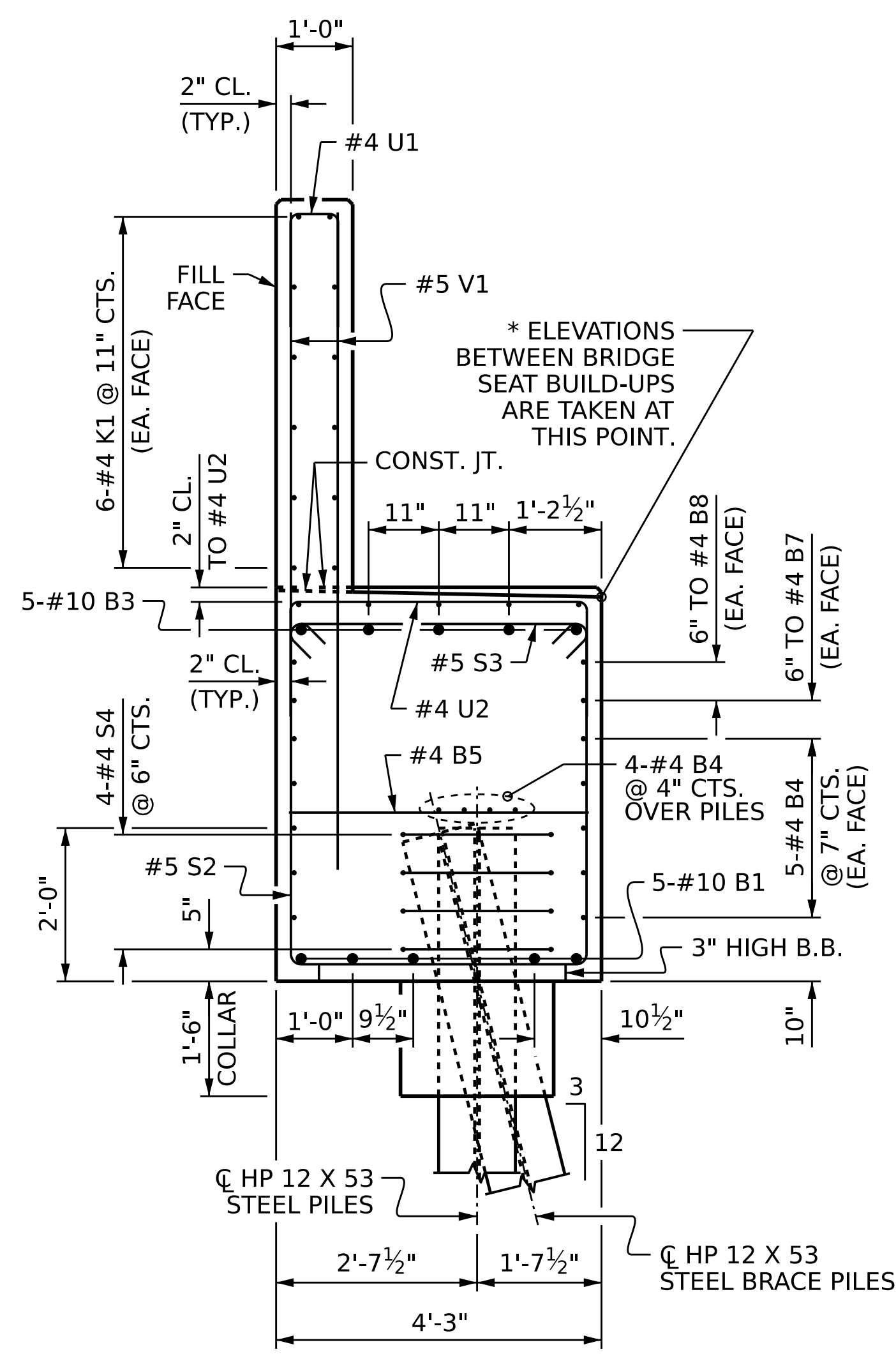
**SECTION A-A**



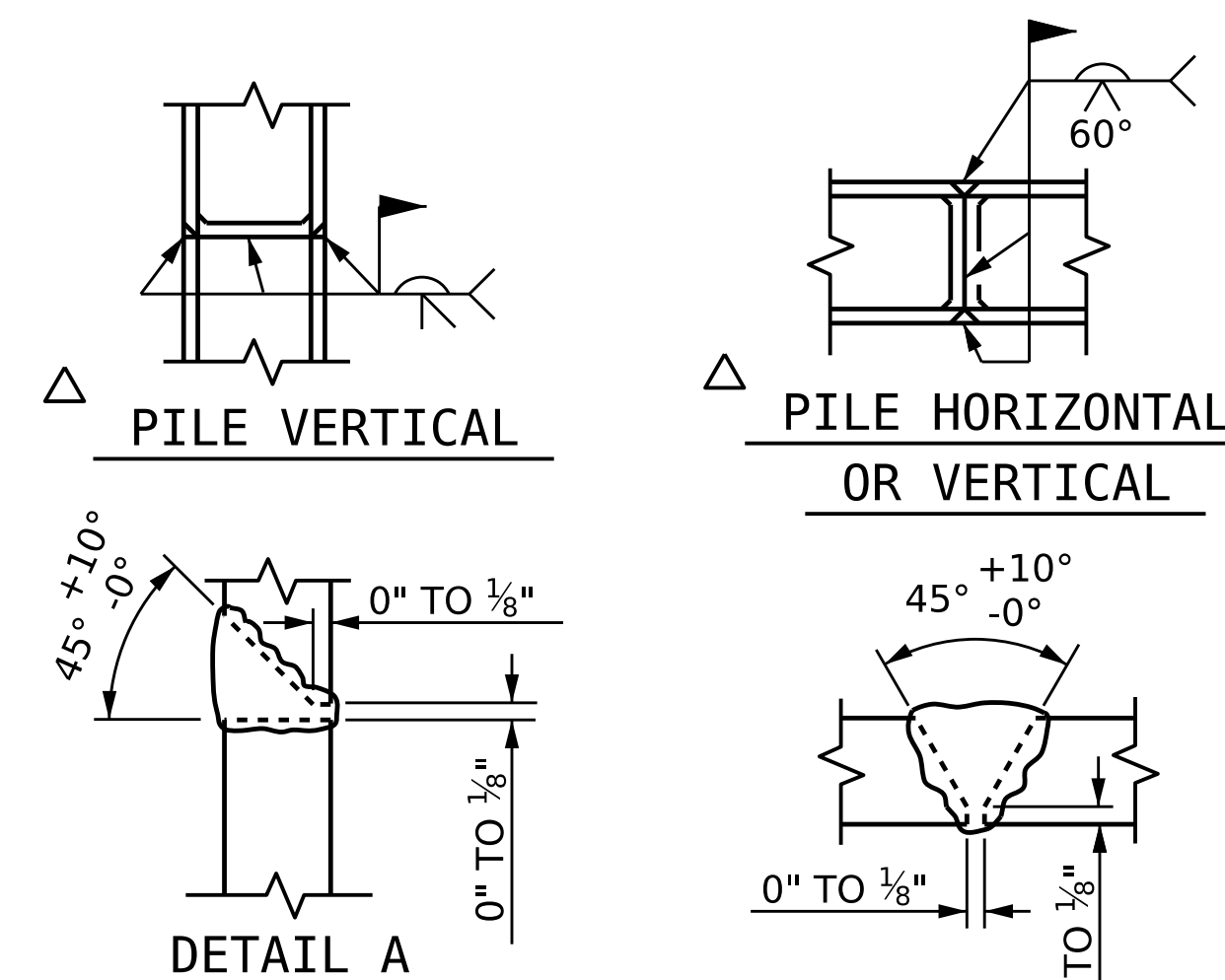
**PART SECTION B-B**



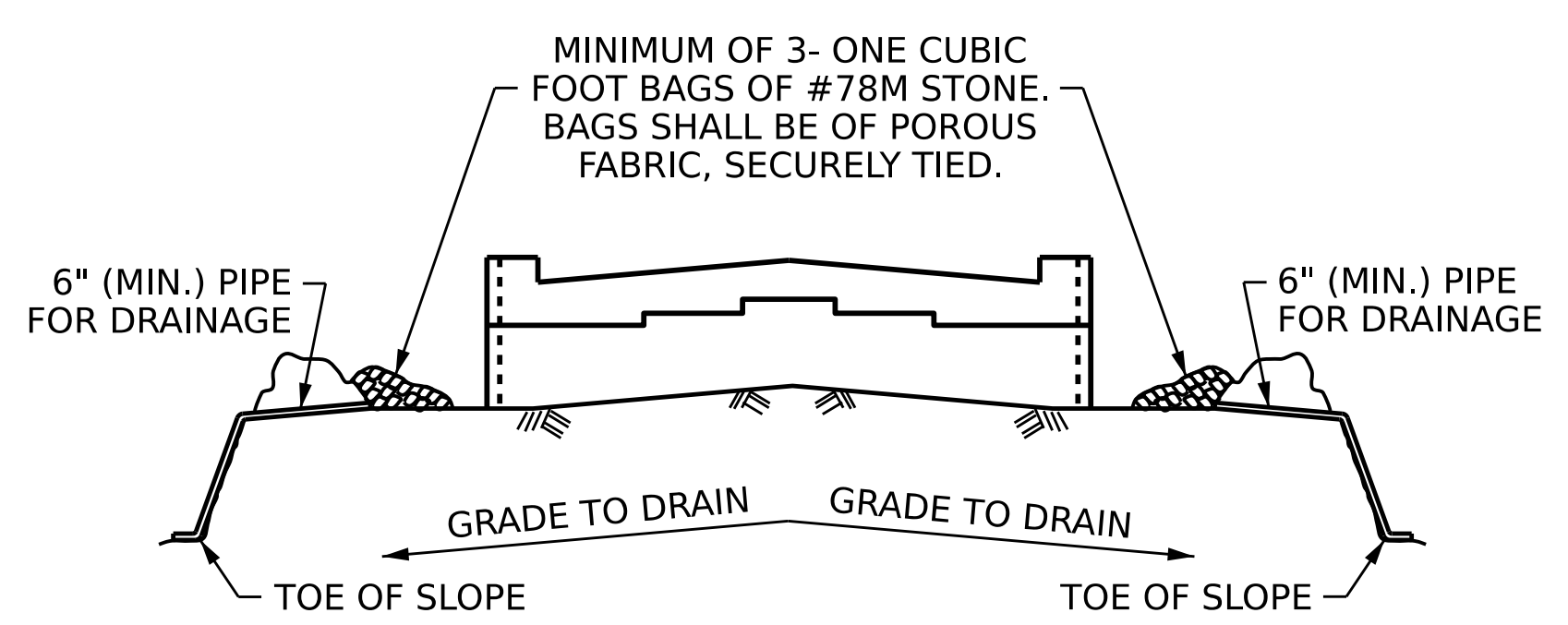
**PART SECTION C-C**



**SECTION D-D**



**PILE SPLICE DETAILS**

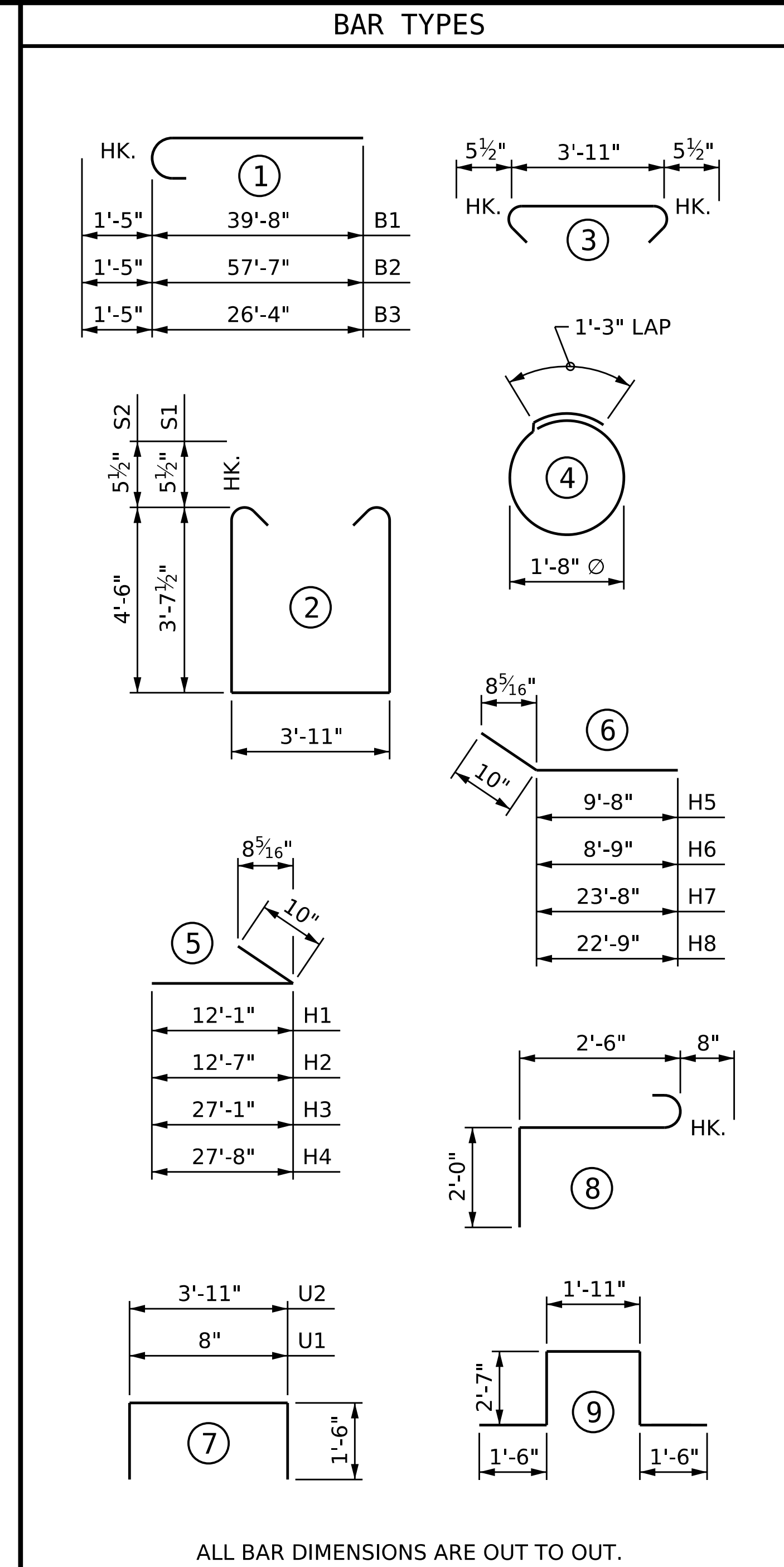


**TEMPORARY DRAINAGE AT END BENT**

BAGGED STONE AND PIPE SHALL BE PLACED IMMEDIATELY AFTER COMPLETION OF END BENT EXCAVATION. PIPE MAY BE EITHER CONCRETE, CORRUGATED STEEL, CORRUGATED ALUMINUM ALLOY, OR CORRUGATED PLASTIC. PERFORATED PIPE WILL NOT BE ALLOWED.

BAGGED STONE SHALL REMAIN IN PLACE UNTIL THE ENGINEER DIRECTS THAT IT BE REMOVED. THE CONTRACTOR SHALL REMOVE AND DISPOSE OF SILT ACCUMULATIONS AT BAGGED STONE WHEN SO DIRECTED BY THE ENGINEER. BAGS SHALL BE REMOVED AND REPLACED WHENEVER THE ENGINEER DETERMINES THAT THEY HAVE DETERIORATED AND LOST THEIR EFFECTIVENESS.

NO SEPARATE PAYMENT WILL BE MADE FOR THIS WORK AND THE ENTIRE COST OF THIS WORK SHALL BE INCLUDED IN THE UNIT CONTRACT PRICE BID FOR THE SEVERAL PAY ITEMS.



ALL BAR DIMENSIONS ARE OUT TO OUT.

**BILL OF MATERIAL**

**END BENT 2**

BAR	NO.	SIZE	TYPE	LENGTH	WEIGHT
B1	10	#10	1	41'-1"	1,768
B2	5	#10	1	59'-0"	1,269
B3	5	#10	1	27'-9"	597
B4	28	#4	STR	38'-10"	726
B5	20	#4	STR	3'-11"	52
B6	5	#4	STR	17'-3"	58
B7	2	#4	STR	19'-8"	26
B8	2	#4	STR	29'-7"	40
B9	5	#4	STR	2'-2"	7
H1	7	#5	5	12'-11"	94
H2	7	#5	5	13'-5"	98
H3	9	#5	5	27'-11"	262
H4	9	#5	5	28'-6"	268
H5	6	#5	6	10'-6"	66
H6	6	#5	6	9'-7"	60
H7	9	#5	6	24'-6"	230
H8	9	#5	6	23'-7"	221
K1	24	#4	STR	38'-10"	623
K2	8	#4	STR	4'-6"	24
S1	45	#5	2	12'-1"	567
S2	27	#5	2	13'-10"	390
S3	72	#5	3	4'-10"	363
S4	36	#4	4	6'-6"	156
S5	12	#6	8	5'-2"	93
S6	12	#6	9	10'-1"	182
U1	65	#4	7	3'-8"	159
U2	14	#4	7	6'-11"	65
V1	130	#5	STR	8'-7"	1,164
V2	25	#5	STR	11'-2"	291
V3	10	#5	STR	11'-1"	116
V4	6	#5	STR	6'-0"	38
V5	14	#5	STR	5'-10"	85
V6	10	#5	STR	5'-8"	59
V7	19	#5	STR	9'-11"	197
V8	10	#5	STR	9'-8"	101
V9	8	#5	STR	5'-7"	47
V10	10	#5	STR	5'-5"	56
V11	10	#5	STR	5'-3"	55

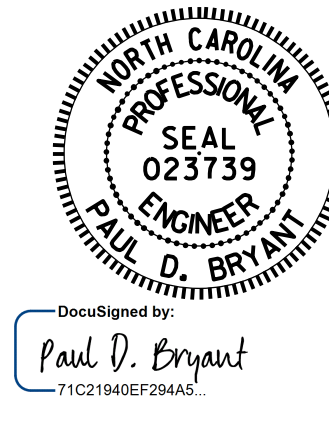
REINFORCING STEEL		10,673 LBS.
CLASS A CONCRETE		
POUR 1	(CAP, COLLARS & LOWER WINGS)	58.1 C. Y.
POUR 2	(BACKWALL & UPPER WINGS)	27.7 C. Y.
TOTAL		85.8 C. Y.

PROJECT NO. **B-5981**  
**DUPLIN** COUNTY  
 STATION: **23+56.64 -L-**

SHEET 3 OF 3

STATE OF NORTH CAROLINA  
 DEPARTMENT OF TRANSPORTATION  
 RALEIGH

**SUBSTRUCTURE**  
**END BENT 2**



10/24/2023

DRAWN BY : P. K. NEWTON DATE : 1/19/23  
 CHECKED BY : D. R. SHACKELFORD DATE : 1/31/23  
 DESIGN ENGINEER OF RECORD : P. D. BRYANT DATE : 2/6/23

NO.	BY:	DATE:	NO.	BY:	DATE:	SHEET NO.
1			3			TOTAL SHEETS 43
2			4			

DOCUMENT NOT CONSIDERED FINAL UNLESS ALL SIGNATURES COMPLETED