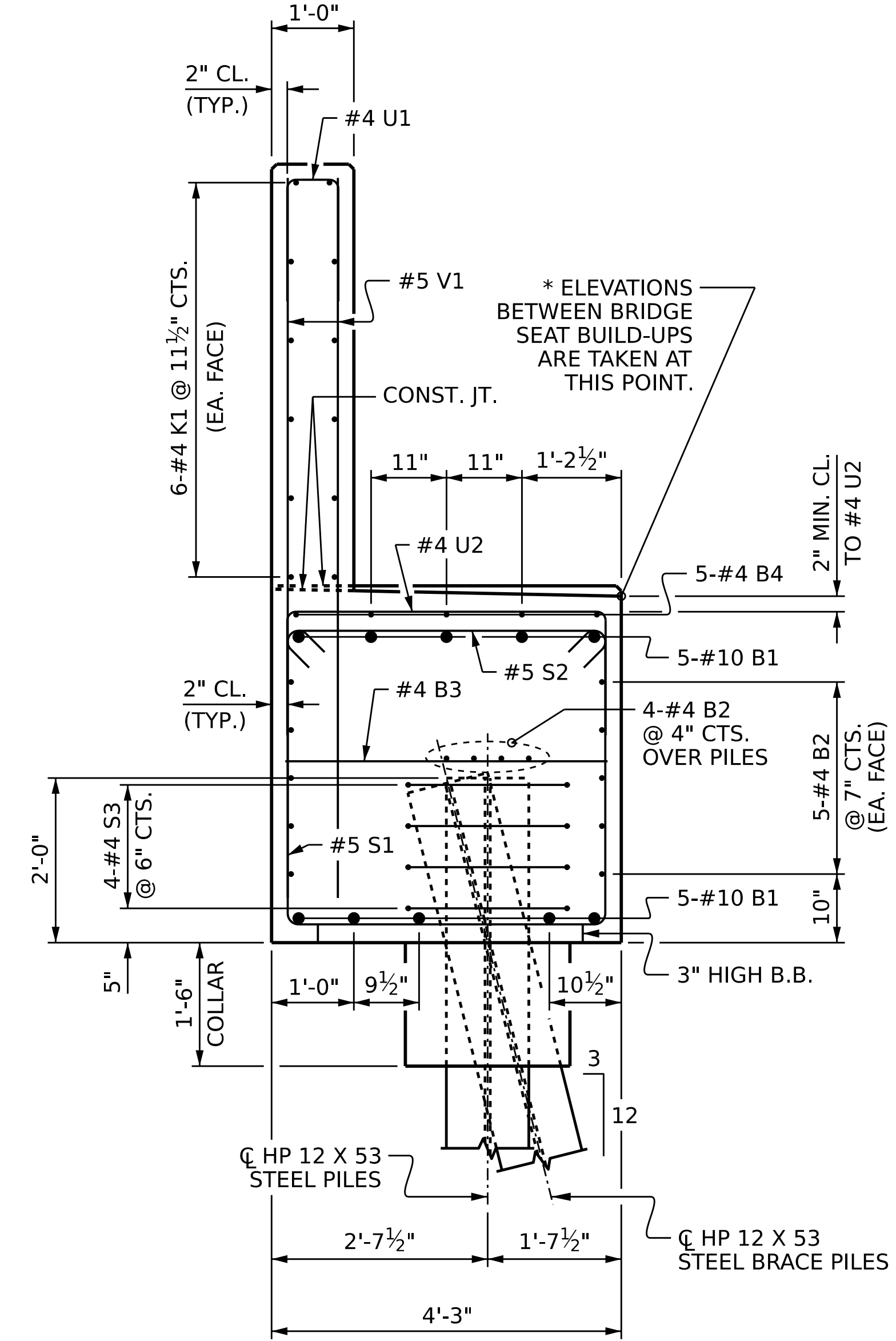
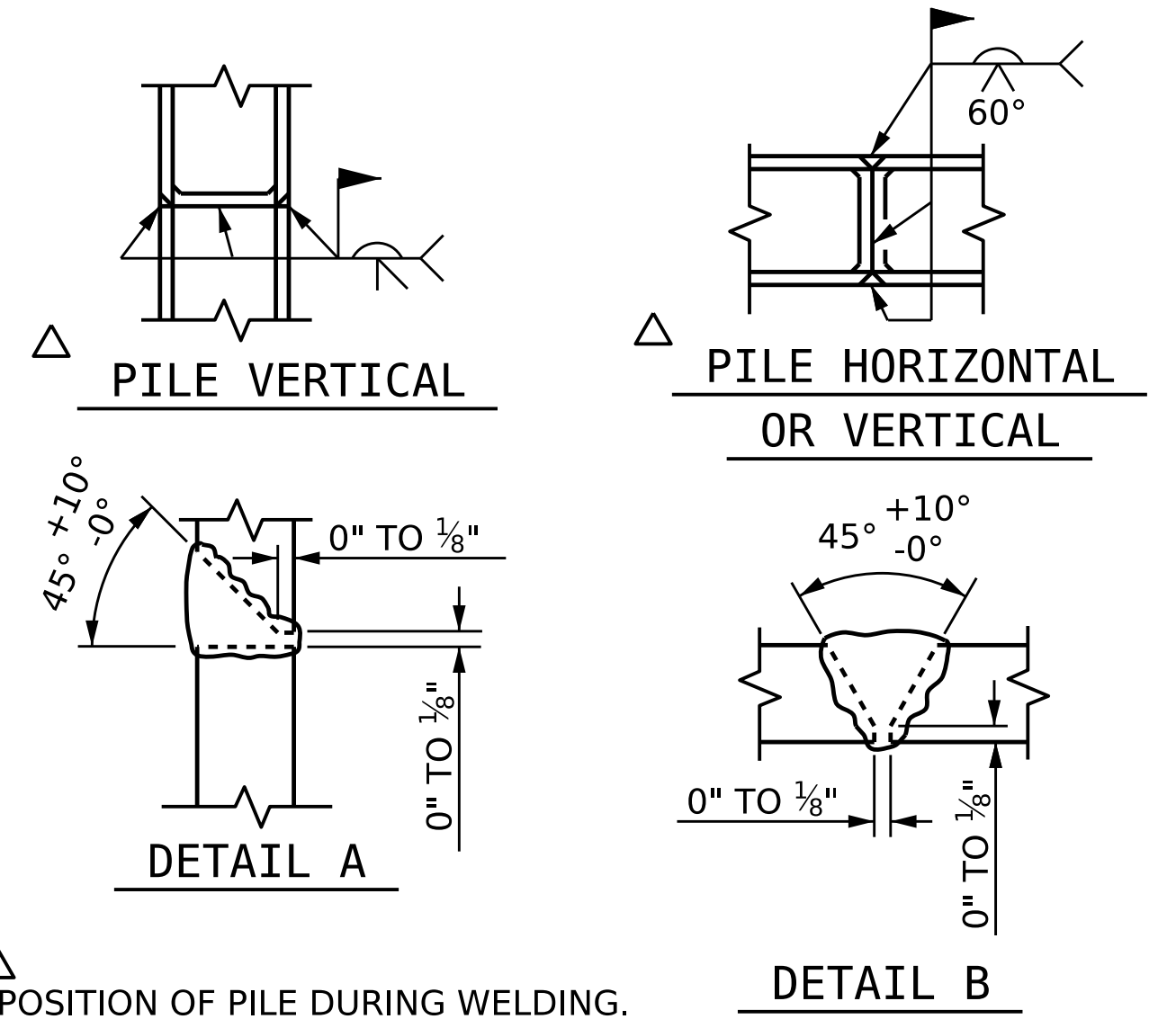


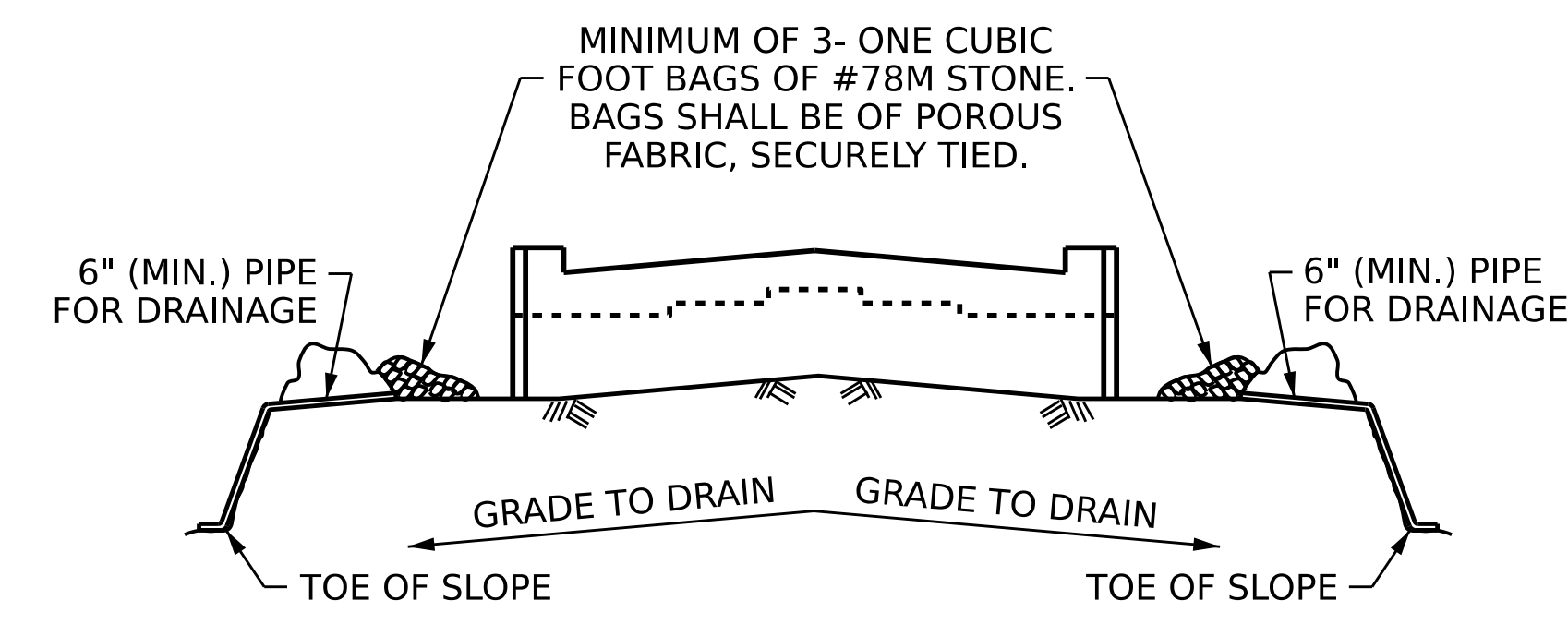
SECTION A-A



SECTION B-B



PILE SPLICE DETAILS



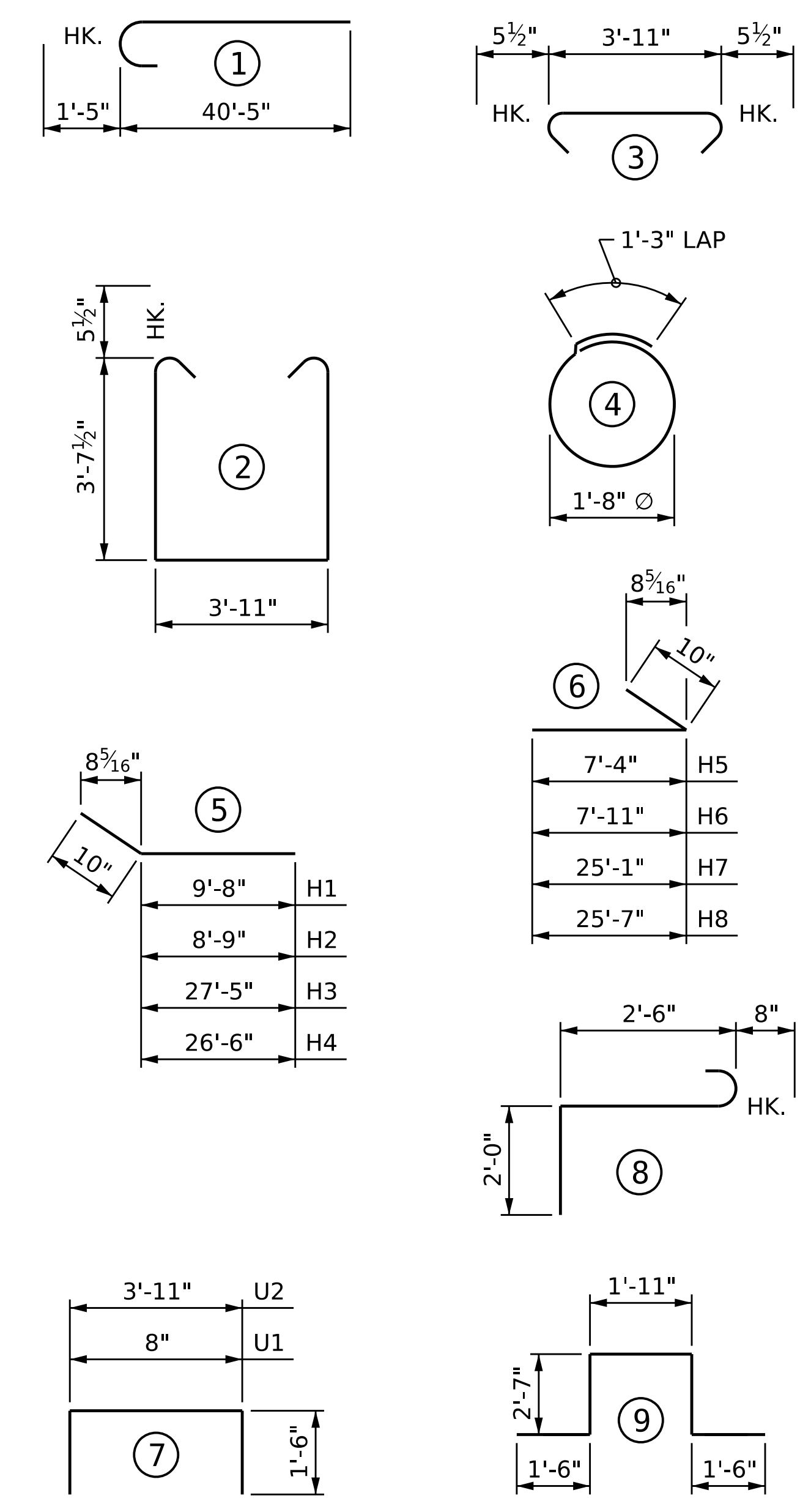
TEMPORARY DRAINAGE AT END BENT

BAGGED STONE AND PIPE SHALL BE PLACED IMMEDIATELY AFTER COMPLETION OF END BENT EXCAVATION. PIPE MAY BE EITHER CONCRETE, CORRUGATED STEEL, CORRUGATED ALUMINUM ALLOY, OR CORRUGATED PLASTIC. PERFORATED PIPE WILL NOT BE ALLOWED.

BAGGED STONE SHALL REMAIN IN PLACE UNTIL THE ENGINEER DIRECTS THAT IT BE REMOVED. THE CONTRACTOR SHALL REMOVE AND DISPOSE OF SILT ACCUMULATIONS AT BAGGED STONE WHEN SO DIRECTED BY THE ENGINEER. BAGS SHALL BE REMOVED AND REPLACED WHENEVER THE ENGINEER DETERMINES THAT THEY HAVE DETERIORATED AND LOST THEIR EFFECTIVENESS.

NO SEPARATE PAYMENT WILL BE MADE FOR THIS WORK AND THE ENTIRE COST OF THIS WORK SHALL BE INCLUDED IN THE UNIT CONTRACT PRICE BID FOR THE SEVERAL PAY ITEMS.

BAR TYPES



ALL BAR DIMENSIONS ARE OUT TO OUT.

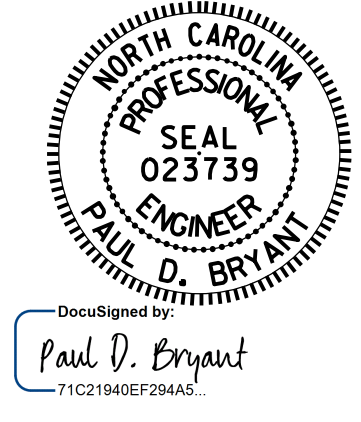
BILL OF MATERIAL

END BENT 1					
BAR	NO.	SIZE	TYPE	LENGTH	WEIGHT
B1	20	#10	1	41'-10"	3,600
B2	28	#4	STR	38'-10"	726
B3	18	#4	STR	3'-11"	47
B4	5	#4	STR	19'-5"	65
H1	6	#5	5	10'-6"	66
H2	6	#5	5	9'-7"	60
H3	9	#5	5	28'-3"	265
H4	9	#5	5	27'-4"	257
H5	6	#5	6	8'-2"	51
H6	6	#5	6	8'-9"	55
H7	9	#5	6	25'-11"	243
H8	9	#5	6	26'-5"	248
K1	24	#4	STR	38'-10"	623
K2	4	#4	STR	4'-7"	12
K3	4	#4	STR	4'-5"	12
S1	72	#5	2	12'-1"	907
S2	72	#5	3	4'-10"	363
S3	36	#4	4	6'-6"	156
S4	12	#6	8	5'-2"	93
S5	12	#6	9	10'-1"	182
U1	65	#4	7	3'-8"	159
U2	13	#4	7	6'-11"	60
V1	130	#5	STR	8'-9"	1,186
V2	54	#5	STR	10'-2"	573
V3	72	#5	STR	6'-2"	463
REINFORCING STEEL				10,472	LBS.
CLASS A CONCRETE					
POUR 1	(CAP, COLLARS & LOWER WINGS)			52.2	C. Y.
POUR 2	(BACKWALL & UPPER WINGS)			28.6	C. Y.
TOTAL				80.8	C. Y.

PROJECT NO. **B-5981**
DUPLIN COUNTY
 STATION: **23+56.64 -L-**
 SHEET 3 OF 3

STATE OF NORTH CAROLINA
 DEPARTMENT OF TRANSPORTATION
 RALEIGH

SUBSTRUCTURE
END BENT 1



REVISIONS					SHEET NO.
NO.	BY:	DATE:	NO.	DATE:	S1-32
1			3		TOTAL SHEETS 43
2			4		

DOCUMENT NOT CONSIDERED FINAL UNLESS ALL SIGNATURES COMPLETED

DRAWN BY : P. K. NEWTON DATE : 1/18/23
 CHECKED BY : D. R. SHACKELFORD DATE : 1/31/23
 DESIGN ENGINEER OF RECORD : P. D. BRYANT DATE : 2/6/23