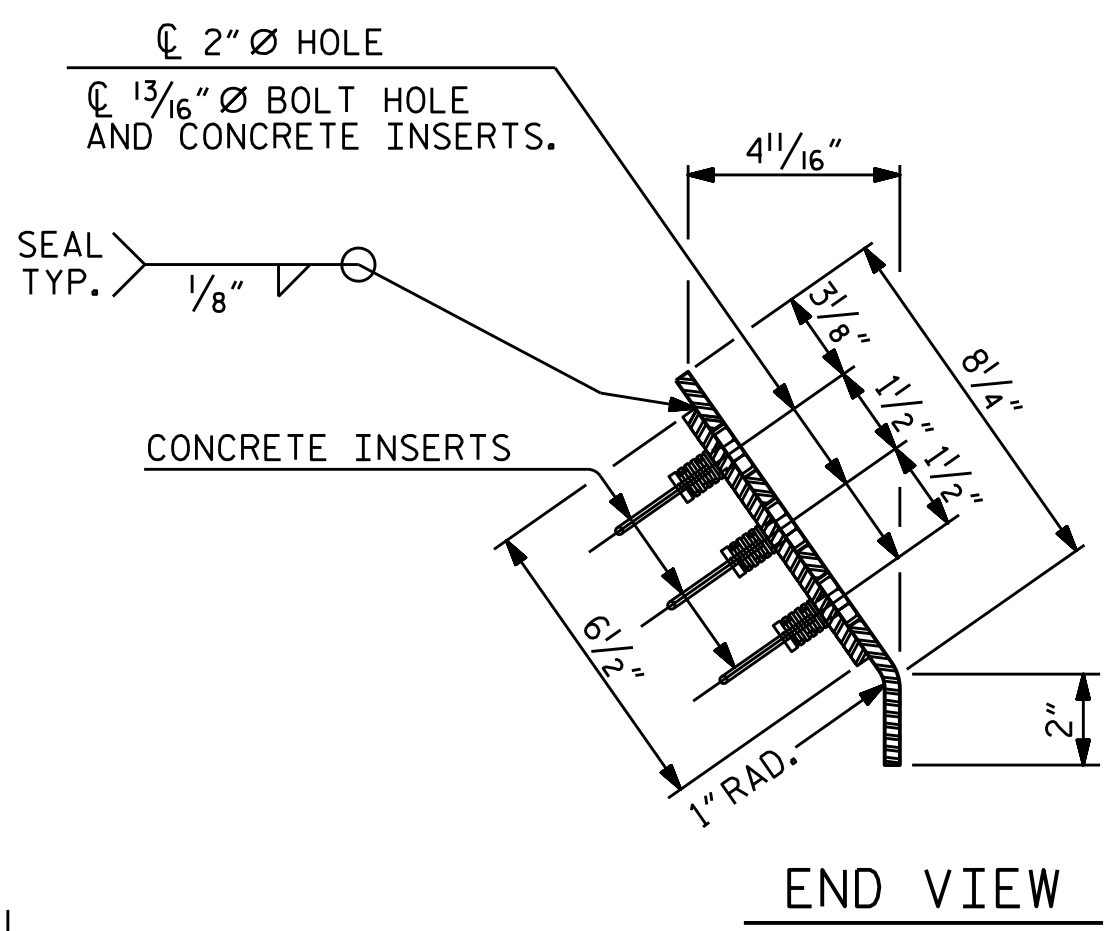
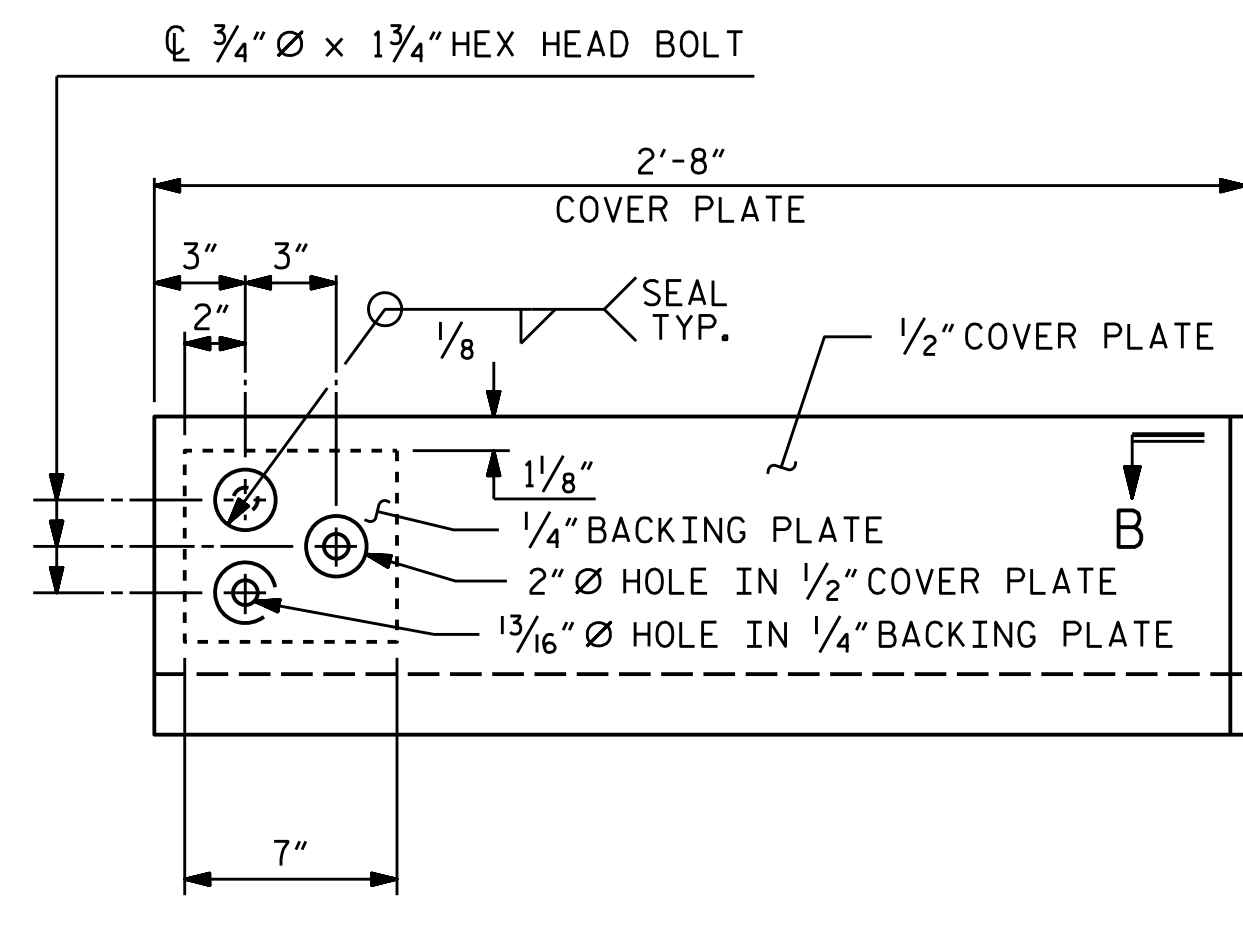


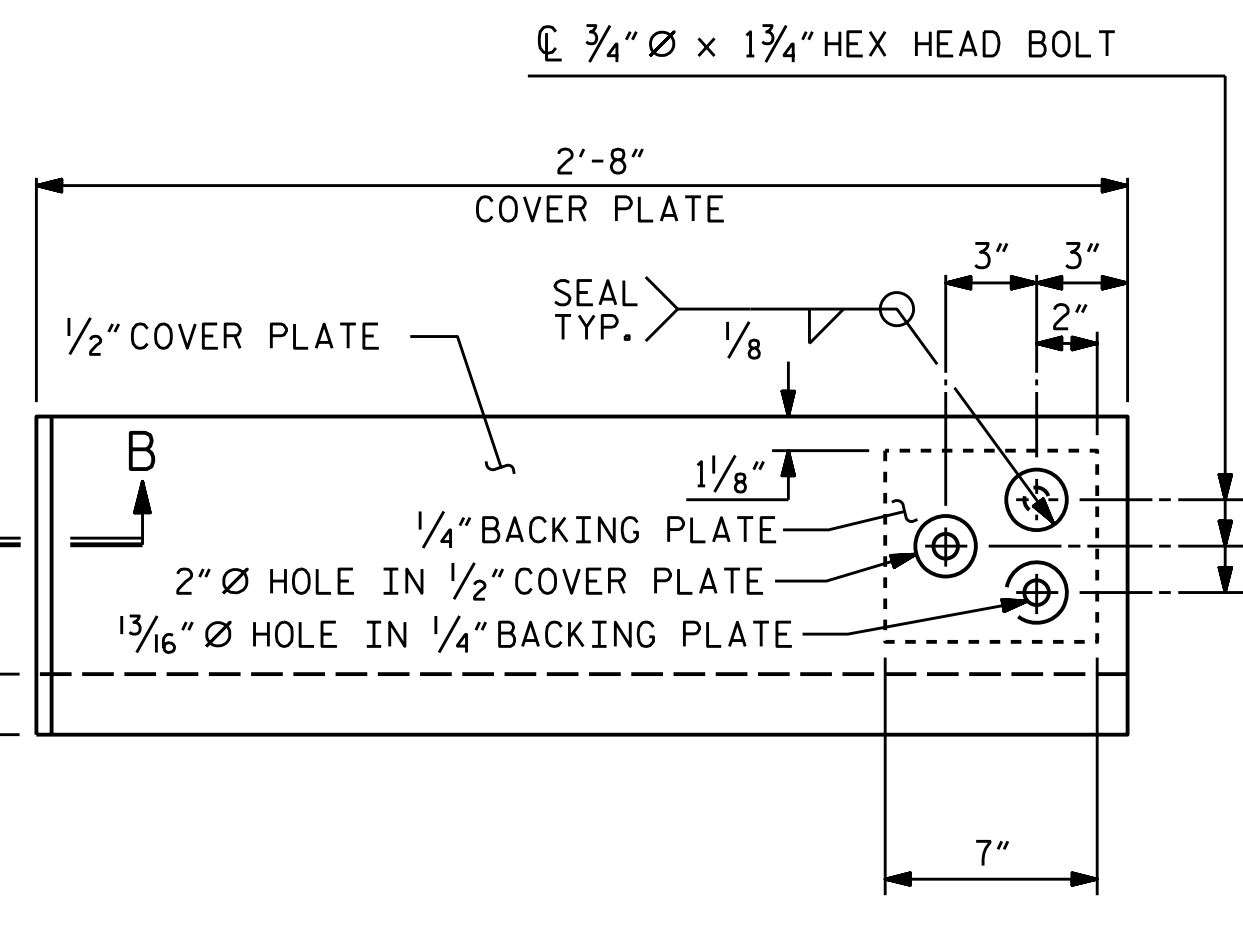
SECTION THRU RAIL NORMAL TO JOINT



END VIEW

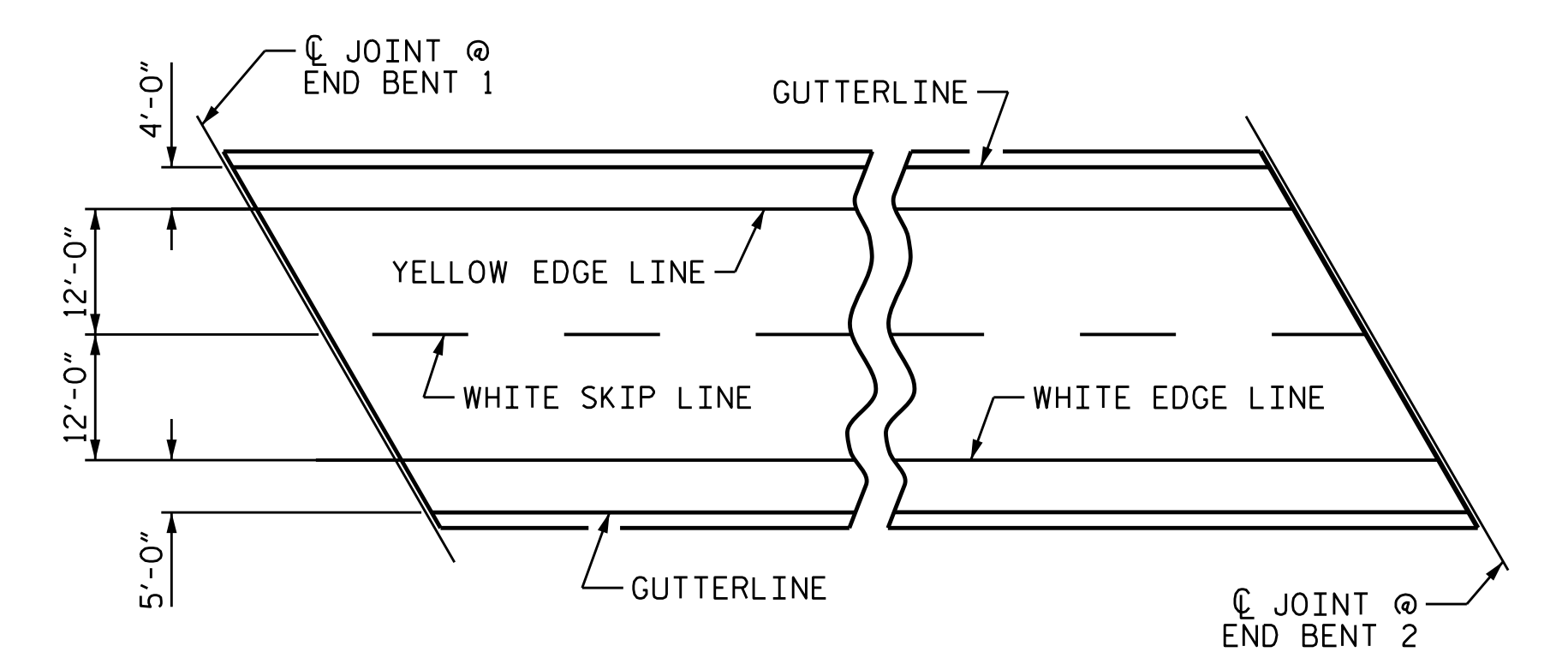


TYPE I - ELEVATION VIEW

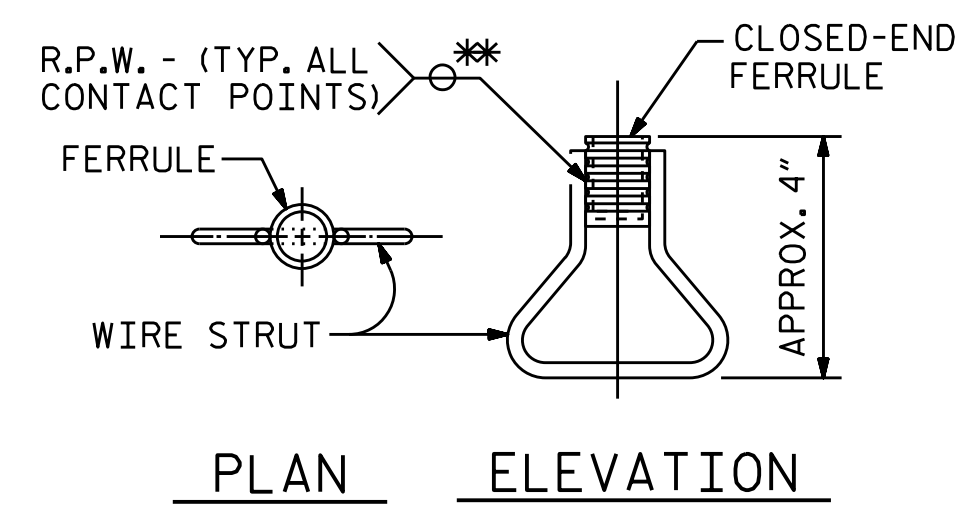


TYPE II - ELEVATION VIEW

COVER PLATE DETAILS



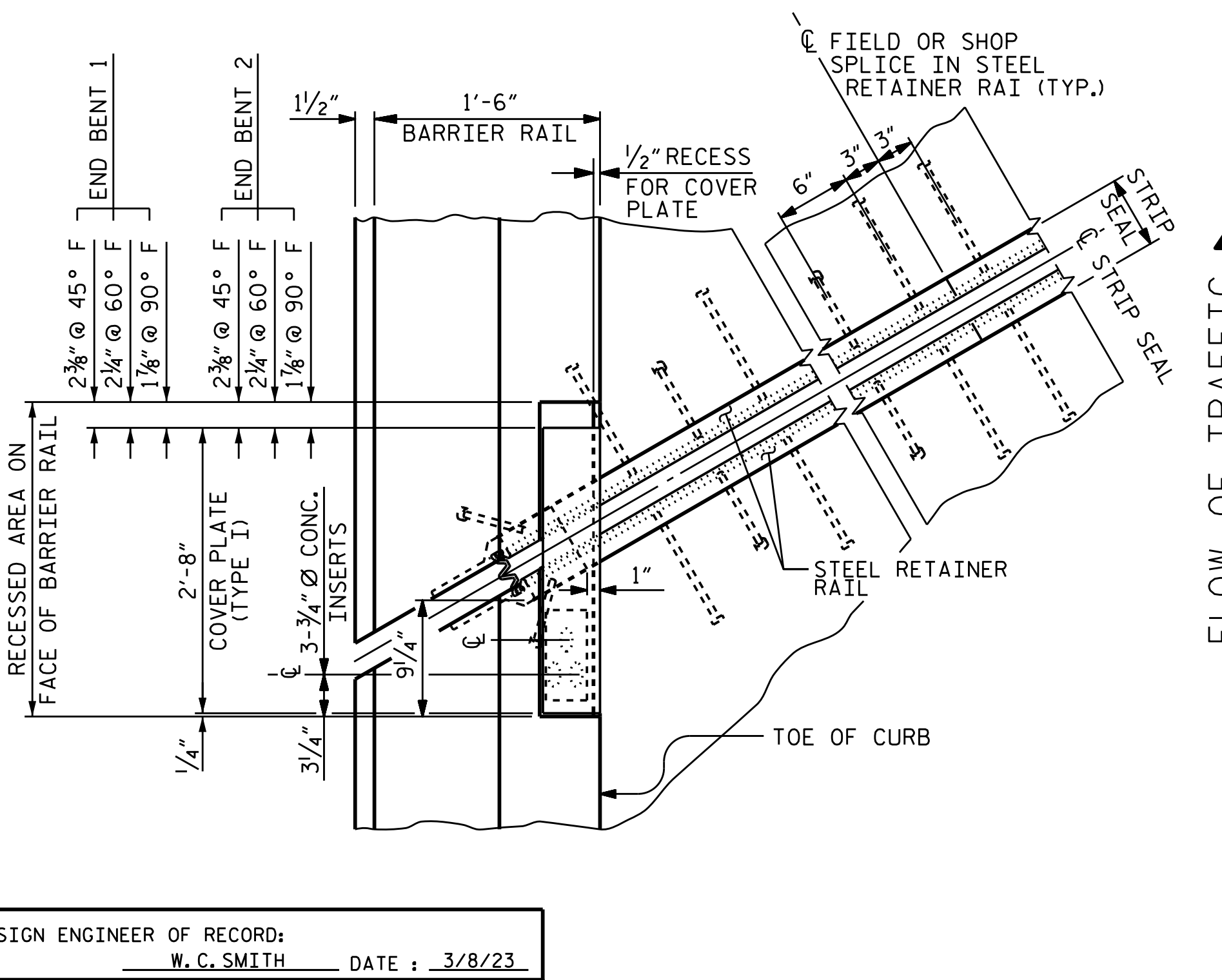
PAVEMENT MARKING ALIGNMENT



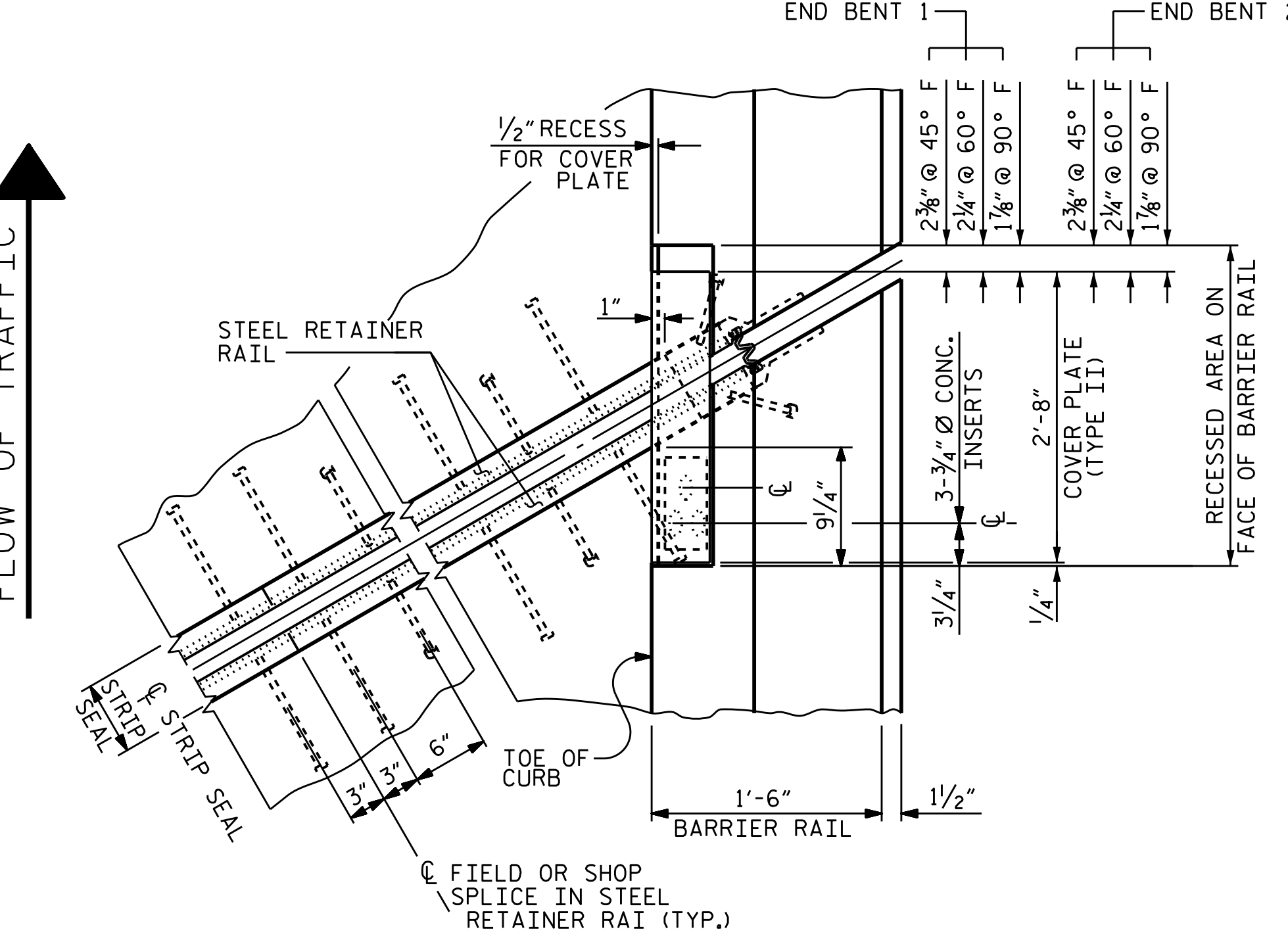
PLAN ELEVATION

CONCRETE INSERT

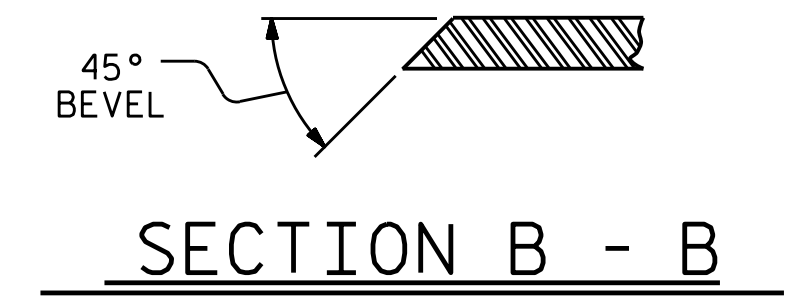
* EACH WELDED ATTACHMENT OF WIRE TO FERRULE SHALL DEVELOP THE TENSILE STRENGTH OF THE WIRE.



PLAN OF STRIP SEAL EXPANSION JOINT



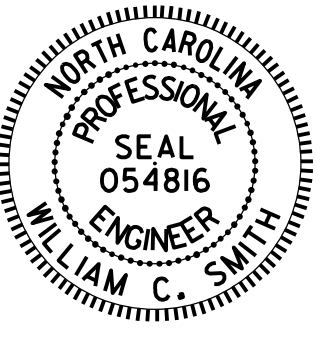
BLOCK OUT DETAIL



SECTION B - B

PROJECT NO. B-5981
DUPLIN COUNTY
STATION: 23+56.64 -L-

SHEET 2 OF 2



STATE OF NORTH CAROLINA
DEPARTMENT OF TRANSPORTATION
RALEIGH
STANDARD
STRIP SEAL EXPANSION
JOINT DETAILS
FOR BARRIER RAIL

DESIGN ENGINEER OF RECORD: W. C. SMITH	DATE: 3/8/23
ASSEMBLED BY: S. T. SANDOR	DATE: 9/27/22
CHECKED BY: M. K. BEARD	DATE: 9/28/22
DRAWN BY: MAA 6/20	
CHECKED BY: BNB 6/20	

REVISIONS						SHEET NO.
NO.	BY:	DATE:	NO.	BY:	DATE:	
1			3			S1-28
2			4			TOTAL SHEETS 43

DOCUMENT NOT CONSIDERED FINAL UNLESS ALL SIGNATURES COMPLETED