

NOTES

ALL PRESTRESSING STRANDS SHALL BE 7-WIRE LOW-RELAXATION GRADE 270 STRANDS AND SHALL CONFORM TO AASHTO M203 EXCEPT FOR SAMPLING REQUIREMENTS WHICH SHALL BE IN ACCORDANCE WITH THE STANDARD SPECIFICATIONS.

ALL REINFORCING STEEL SHALL BE GRADE 60.

APPLY EPOXY PROTECTIVE COATING TO END OF GIRDER SURFACES INDICATED IN ELEVATION VIEW.

EMBEDDED PLATE "B-1" SHALL BE GALVANIZED IN ACCORDANCE WITH THE STANDARD SPECIFICATIONS.

ANCHOR STUDS SHALL CONFORM TO AASHTO M169 GRADES 1010 THROUGH 1020 OR APPROVED EQUAL, AND SHALL MEET THE TYPE "B" REQUIREMENTS OF SUBSECTION 7.3 OF THE ANSI/AASHTO/AWS D1.5 BRIDGE WELDING CODE.

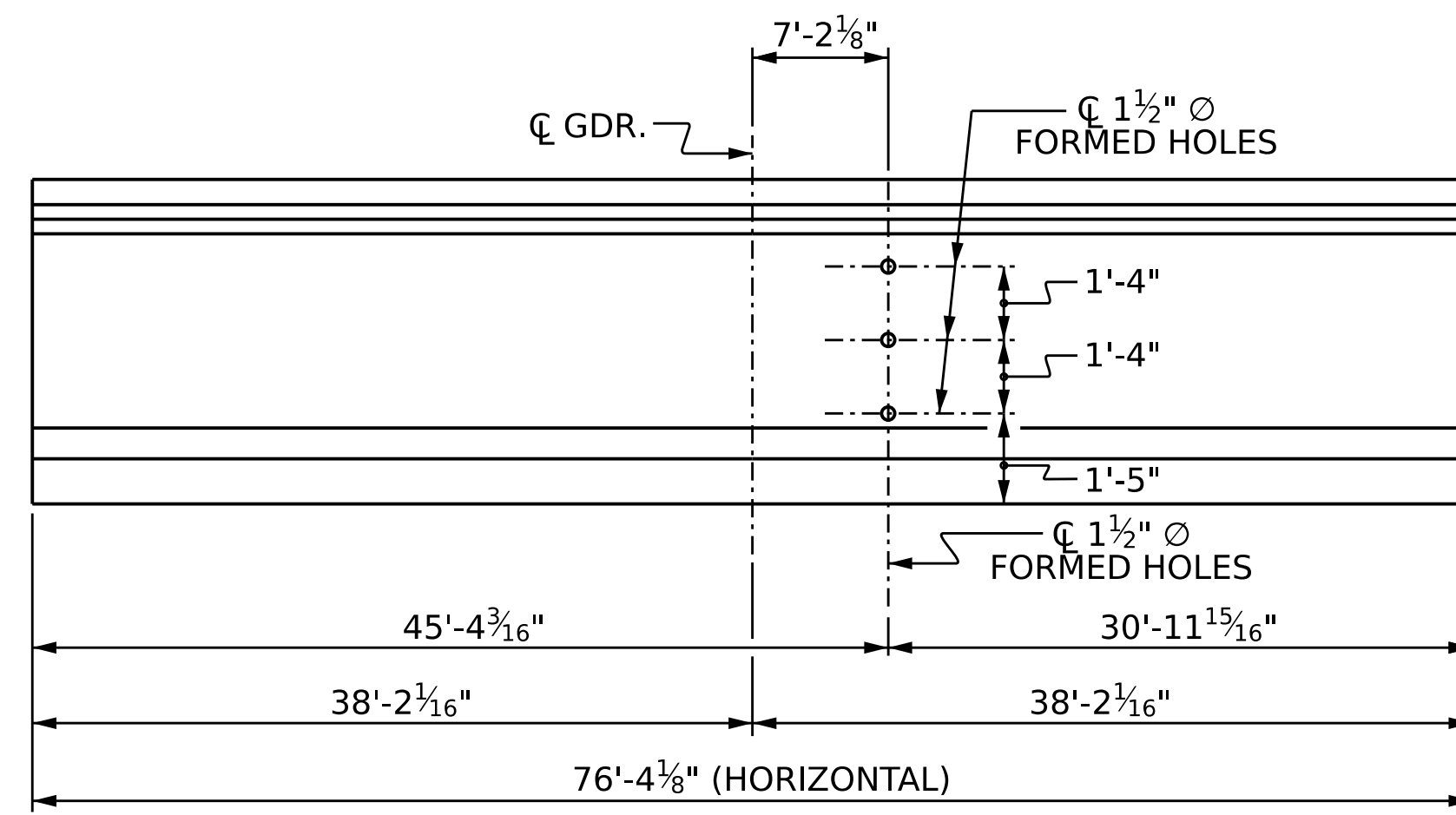
AT ENDS OF GIRDERS TO BE EMBEDDED IN CONCRETE DIAPHRAGMS OR END WALLS, PRESTRESSING STRANDS MAY EXTEND A MAXIMUM OF 2" BEYOND THE GIRDER ENDS. OTHERWISE, PRESTRESSING STRANDS SHALL BE CUT FLUSH WITH THE GIRDER ENDS.

THE TRANSFER OF LOAD FROM THE ANCHORAGES TO THE GIRDER SHALL BE DONE WHEN CONCRETE HAS REACHED A COMPRESSIVE STRENGTH OF NOT LESS THAN 4,000 PSI FOR SPAN A OR C & 8,000 PSI FOR SPAN B.

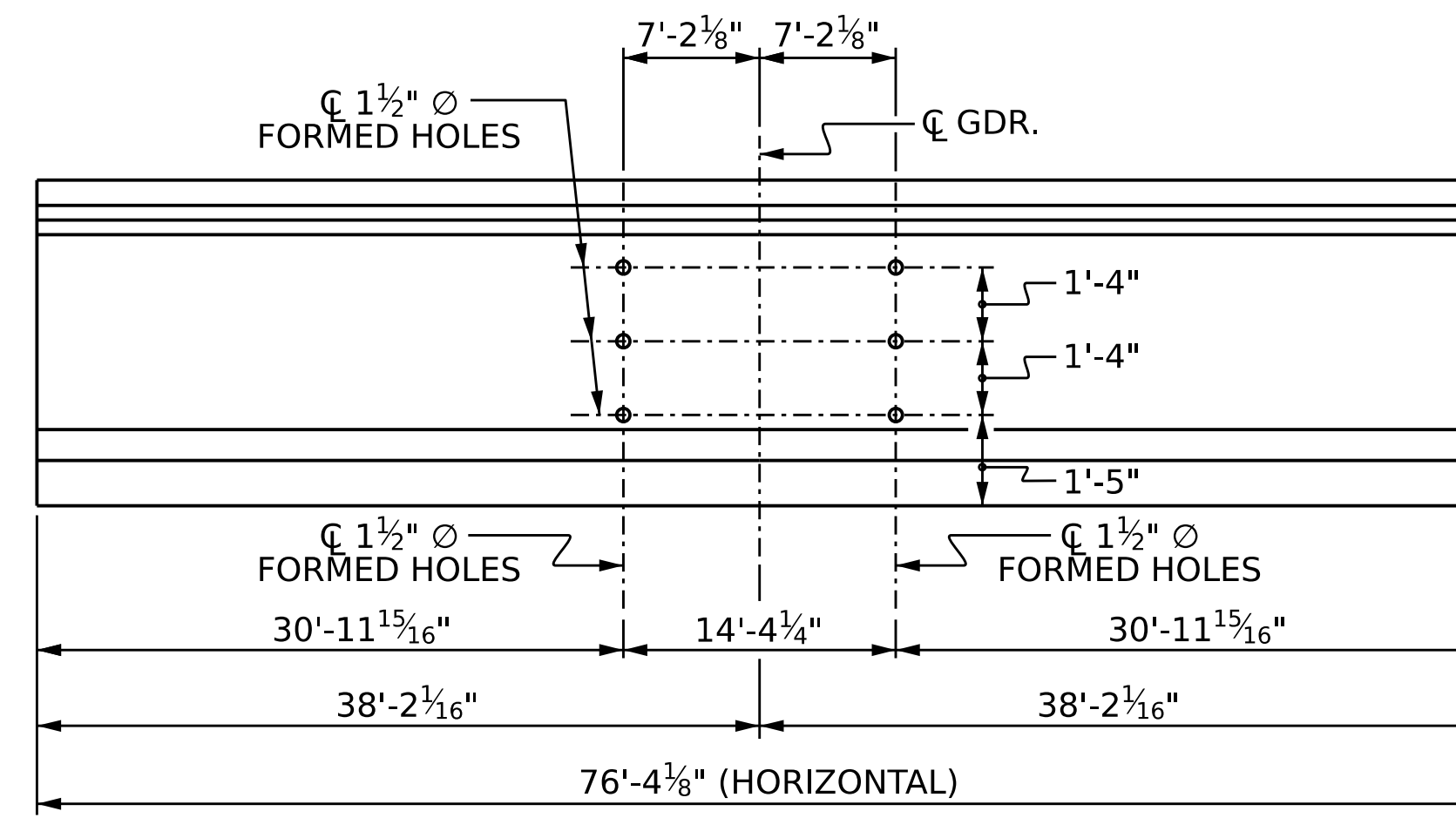
DEPENDING ON THE TYPE OF SYSTEM USED TO SUPPORT THE DECK SLAB FORMS, PRESET ANCHORS MAY BE NECESSARY IN THE PRESTRESSED CONCRETE GIRDER.

THE TOP SURFACE OF THE GIRDER, EXCLUDING THE OUTSIDE 4" AND LINK SLAB REGION, SHALL BE RAKED TO A DEPTH OF 1/4".

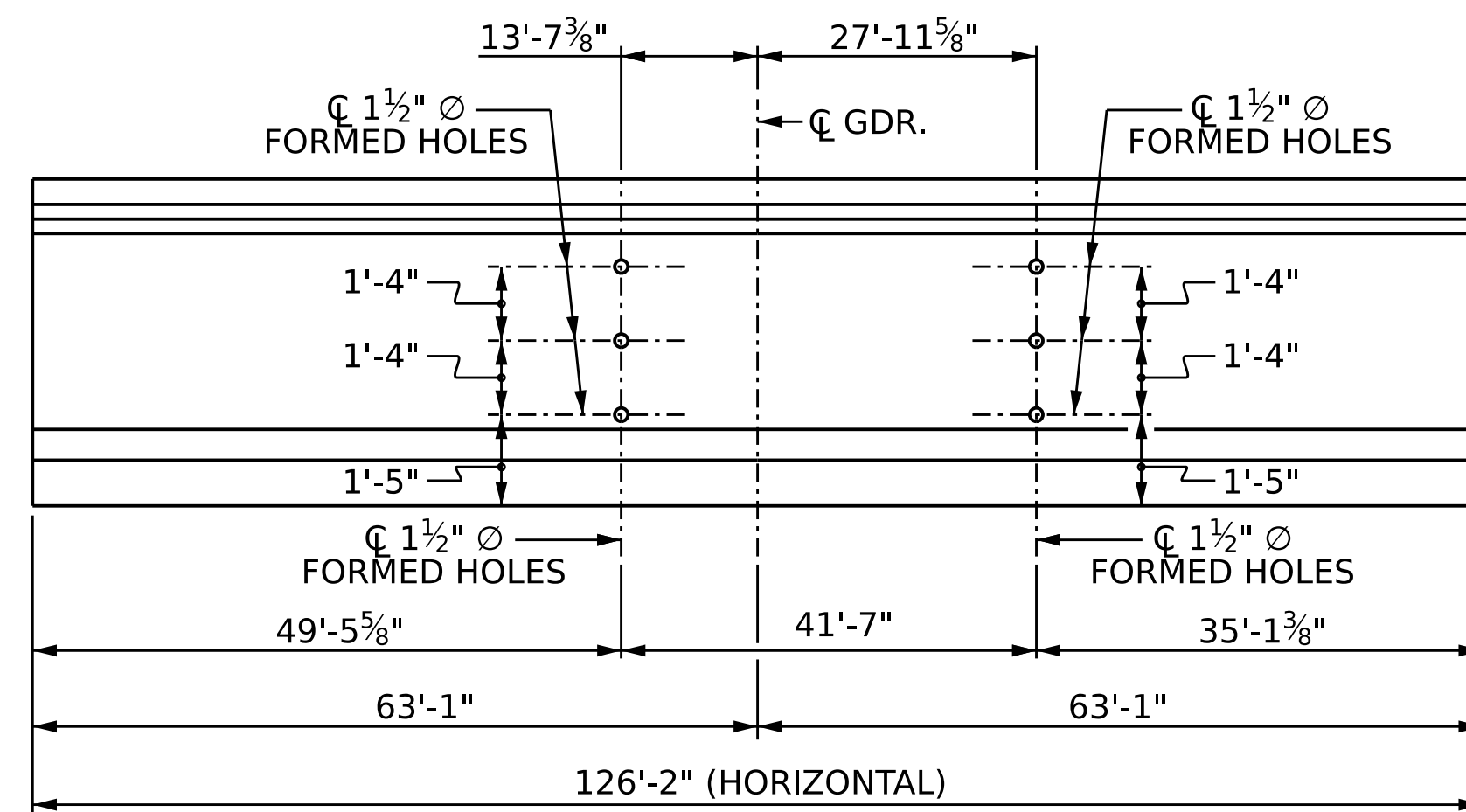
A 2" x 2" CHAMFER IS ALLOWED AT THE INTERSECTION OF THE WEB AND THE BOTTOM FLANGE OF THE 63" MODIFIED BULB TEES ONLY.



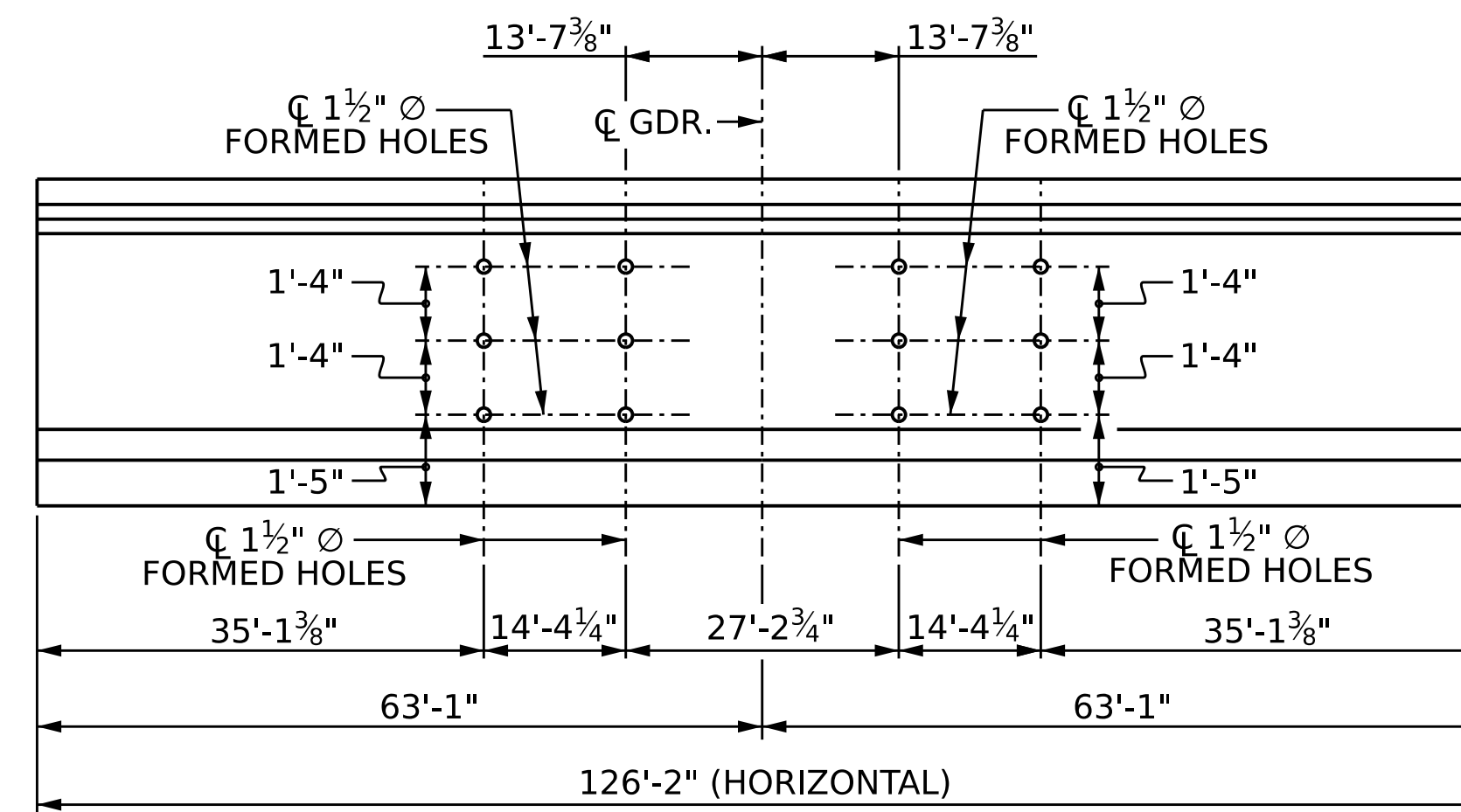
SPAN A - EXTERIOR GIRDERS
(LEFT EXTERIOR SHOWN, RIGHT EXTERIOR DIMENSIONS MIRRORED ABOUT ϕ)



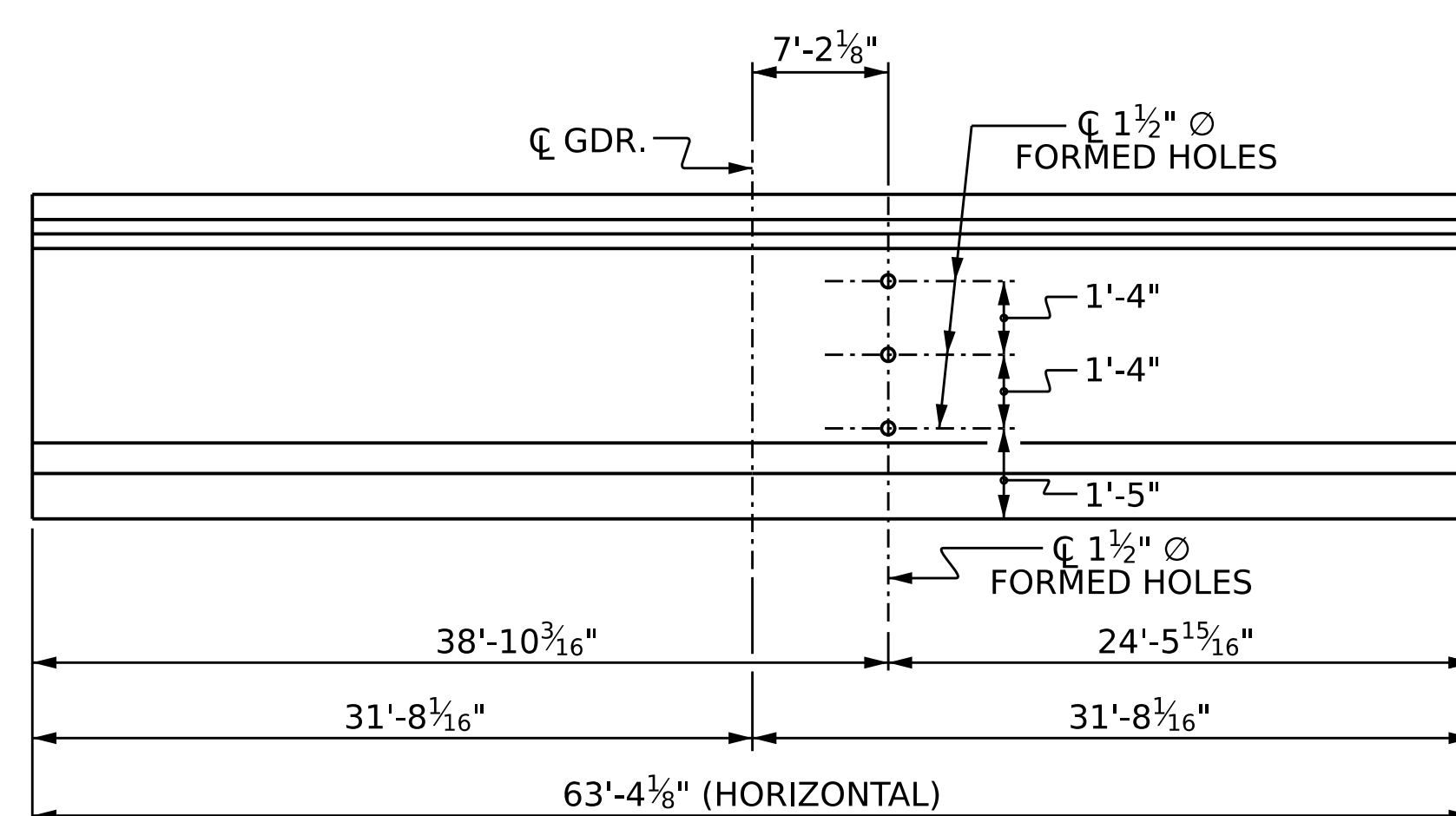
SPAN A - INTERIOR GIRDERS



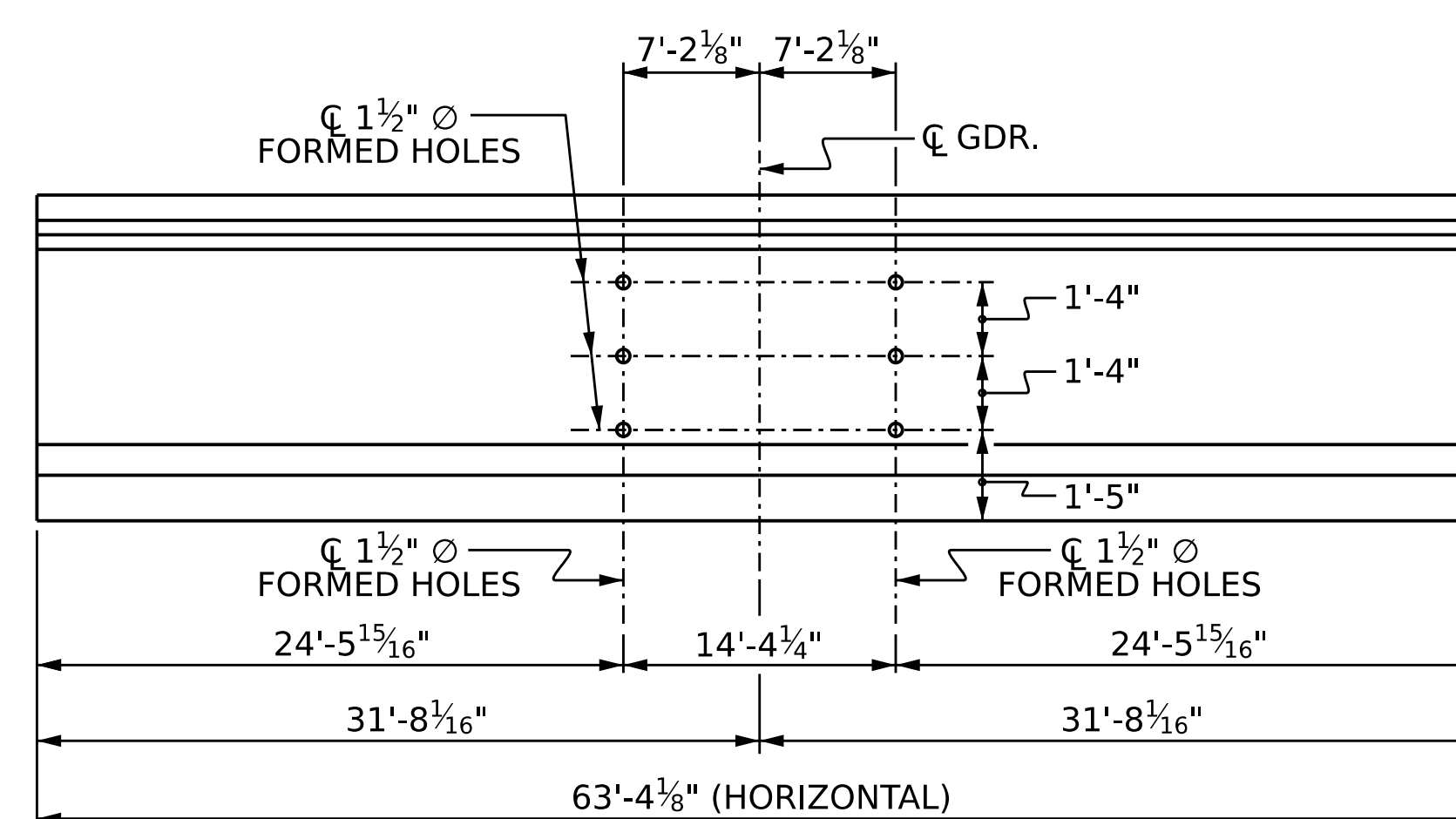
SPAN B - EXTERIOR GIRDERS
(LEFT EXTERIOR SHOWN, RIGHT EXTERIOR SIMILAR BY ROTATION)



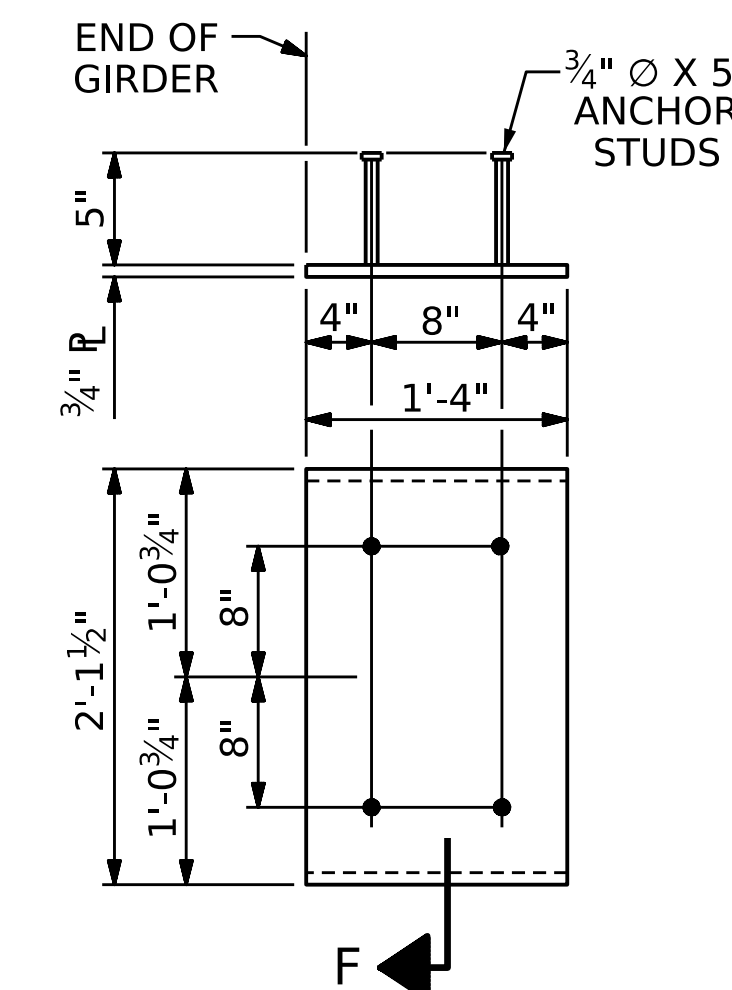
SPAN B - INTERIOR GIRDERS



SPAN C - EXTERIOR GIRDERS
(LEFT EXTERIOR SHOWN, RIGHT EXTERIOR DIMENSIONS MIRRORED ABOUT ϕ)

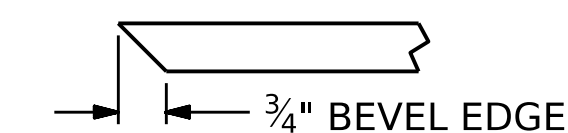


SPAN C - INTERIOR GIRDERS

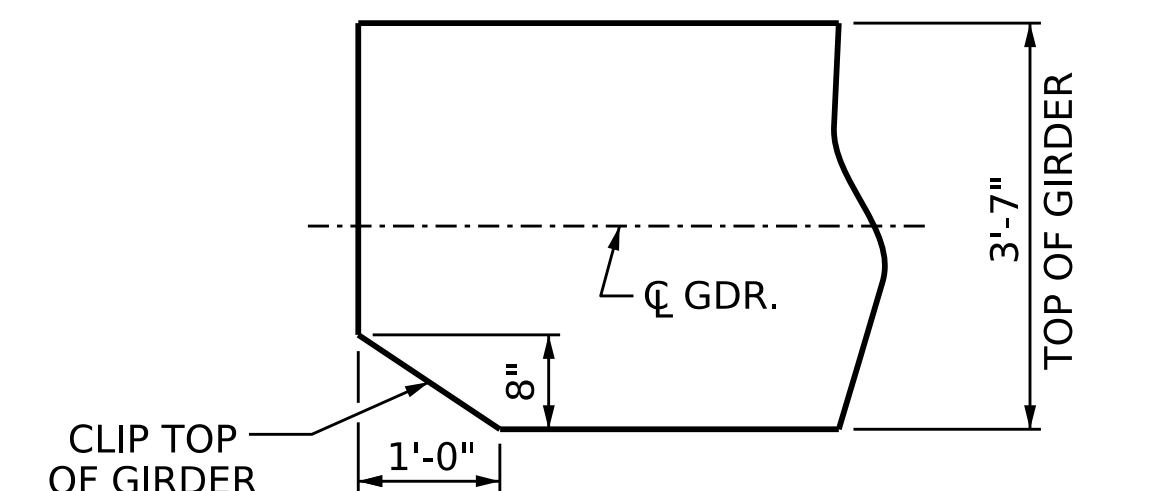


EMBEDDED PLATE "B-1" DETAILS FOR 63" MODIFIED BULB TEES

(2 REQ'D PER GIRDER)

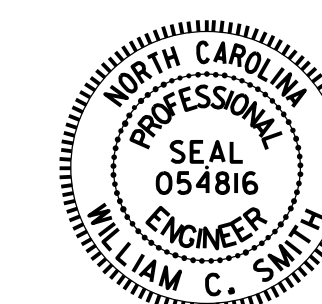


SECTION "F"
(SEE NOTES)



TOP FLANGE CLIP DETAILS
END BENT 1 SHOWN, END BENT 2 SIMILAR BY ROTATION

PROJECT NO. **B-5981**
DUPLIN COUNTY
STATION: **23+56.64 -L-**



DocuSigned by:
William C. Smith
04262023F0241D
10/24/2023

STATE OF NORTH CAROLINA
DEPARTMENT OF TRANSPORTATION
RALEIGH
STANDARD
PRESTRESSED CONCRETE GIRDER DETAILS

REVISIONS						SHEET NO.
NO.	BY:	DATE:	NO.	BY:	DATE:	S1-17
1			3			TOTAL SHEETS
2			4			43

DOCUMENT NOT CONSIDERED FINAL UNLESS ALL SIGNATURES COMPLETED

DESIGN ENGINEER OF RECORD:			
W.C. SMITH		DATE : 3/8/23	
ASSEMBLED BY : K. BEARD		DATE : 7/6/22	
CHECKED BY : D. SHACKELFORD		DATE : 8/15/22	
DRAWN BY :	ELR 11/91	REV. 1/15	MAA/TMG
CHECKED BY :	GRP 11/91	REV. 2/15	MAA/TMG
		REV. 12/17	MAA/THC

BOLT HOLE PLACEMENT DETAILS