

**PLAN OF SPAN A**

FOR INTERMEDIATE STEEL DIAPHRAGM DETAILS, SEE "INTERMEDIATE STEEL DIAPHRAGMS FOR 63" MODIFIED BULBTEE PRESTRESSED CONCRETE GIRDERS" SHEET.  
 FOR LOCATIONS OF TRANSVERSE CONSTRUCTION JOINTS, SEE SHEET S1-29

PROJECT NO. **B-5981**

**DUPLIN** COUNTY

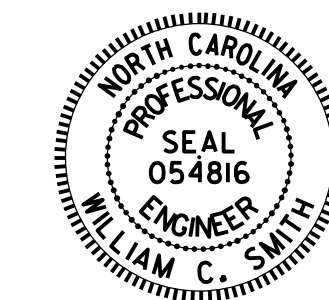
STATION: **23+56.64 -L-**

SHEET 1 OF 3

STATE OF NORTH CAROLINA  
 DEPARTMENT OF TRANSPORTATION  
 RALEIGH

SUPERSTRUCTURE

**PLAN OF SPANS**



DocuSigned by:  
 William C. Smith  
 8A2A8283F8241D  
 10/24/2023

DRAWN BY: **K. BEARD** DATE: **7/26/22**  
 CHECKED BY: **D. SHACKELFORD** DATE: **8/24/22**  
 DESIGN ENGINEER OF RECORD: **W.C. SMITH** DATE: **3/8/23**

DOCUMENT NOT CONSIDERED  
 FINAL UNLESS ALL  
 SIGNATURES COMPLETED

| REVISIONS |     |       |     |     |       | SHEET NO.    |
|-----------|-----|-------|-----|-----|-------|--------------|
| NO.       | BY: | DATE: | NO. | BY: | DATE: | S1-10        |
| 1         |     |       | 3   |     |       | TOTAL SHEETS |
| 2         |     |       | 4   |     |       | 43           |