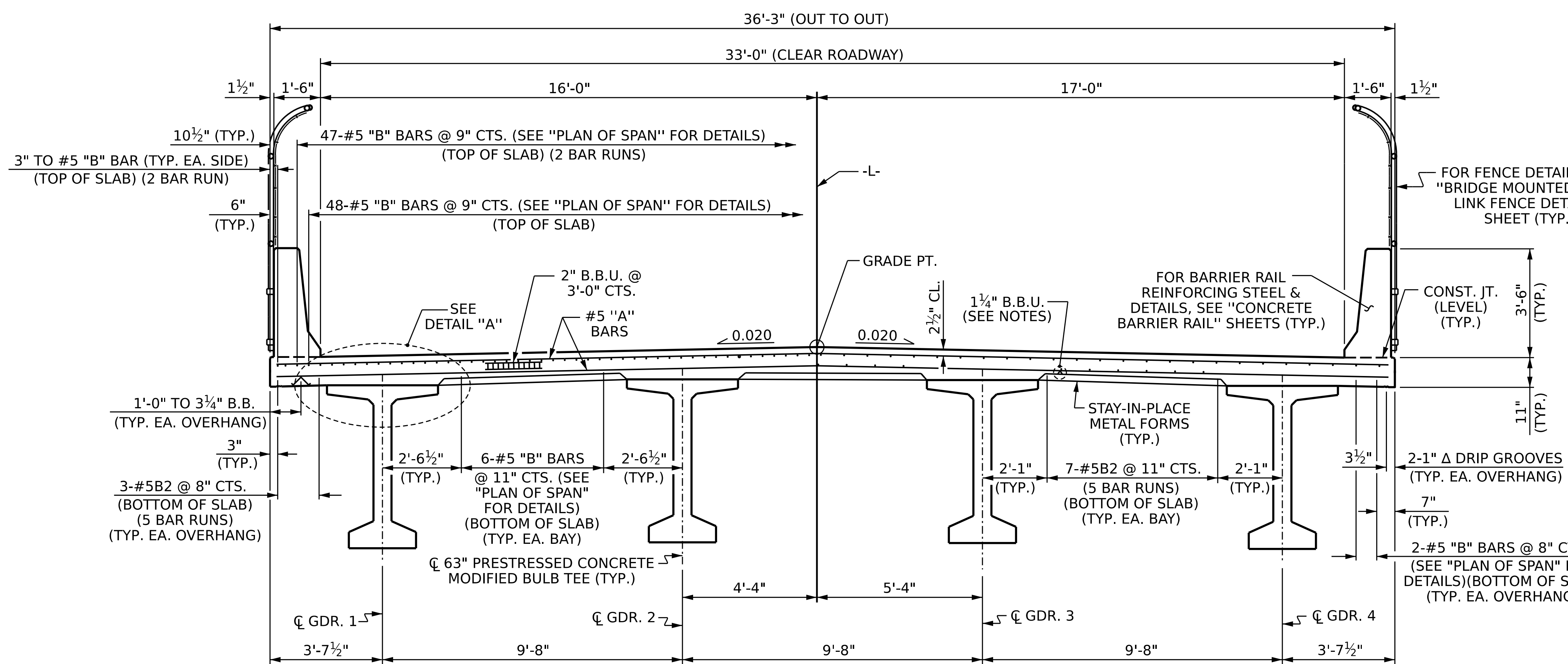


TYPICAL SECTION @ END BENT



TYPICAL SECTION @ LINK SLAB

NOTES

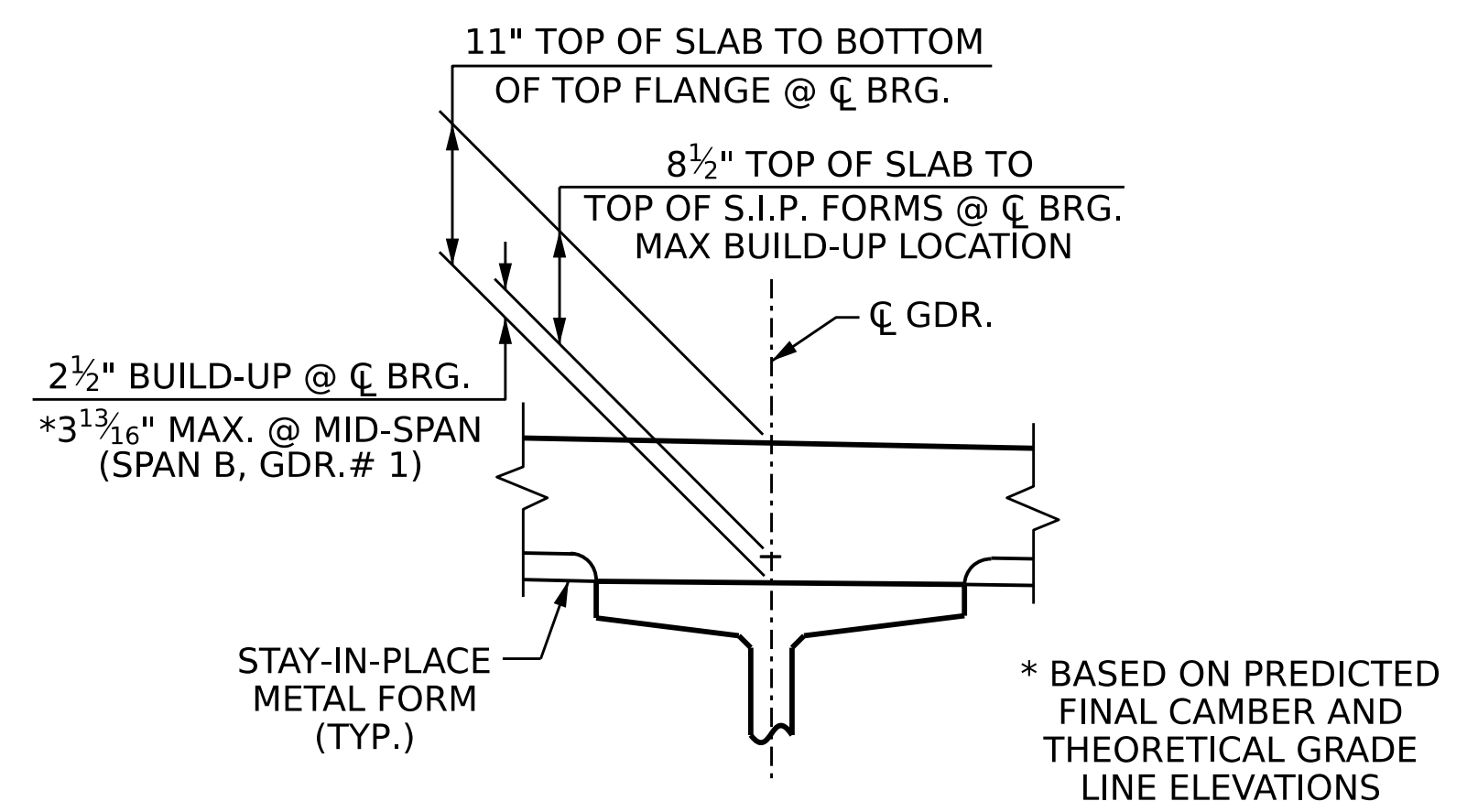
PROVIDE 1 1/4" HIGH BEAM BOLSTERS UPPER AT 4'-0" CTS. ATOP THE METAL STAY-IN-PLACE FORMS TO SUPPORT THE BOTTOM MAT OF "A" BARS. WHEN USING REMOVABLE FORMS, PROVIDE CONTINUOUS HIGH CHAIRS FOR METAL DECK (C.H.C.M.) @ 4'-0" CTS. WITH A HEIGHT TO SUPPORT THE BOTTOM MAT OF "A" BARS A CLEAR DISTANCE OF 2 1/2" ABOVE THE TOP OF THE REMOVABLE FORM.

LONGITUDINAL STEEL MAY BE SHIFTED SLIGHTLY, AS NECESSARY, TO AVOID INTERFERENCE WITH STIRRUPS IN PRESTRESSED CONCRETE GIRDERS.

PREVIOUSLY CAST CONCRETE IN A CONTINUOUS UNIT SHALL HAVE ATTAINED A MINIMUM COMPRESSIVE STRENGTH OF 3,000 PSI BEFORE ADDITIONAL CONCRETE IS CAST IN THE UNIT.

BARRIER RAIL IN A CONTINUOUS UNIT SHALL NOT BE CAST UNTIL ALL SLAB CONCRETE IN THAT UNIT HAS BEEN CAST AND HAS REACHED A MINIMUM COMPRESSIVE STRENGTH OF 3,000 PSI.

FOR STRIP SEAL EXPANSION JOINT, SEE SPECIAL PROVISIONS.

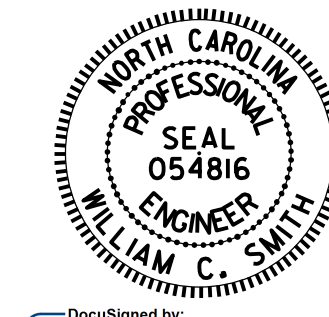


DETAIL "A"

PROJECT NO. **B-5981**
DUPLIN COUNTY
 STATION: **23+56.64 -L-**

SHEET 1 OF 2

STATE OF NORTH CAROLINA
 DEPARTMENT OF TRANSPORTATION
 RALEIGH
 SUPERSTRUCTURE
TYPICAL SECTION



DocuSigned by:
 William C. Smith
 10/24/2023

DOCUMENT NOT CONSIDERED
 FINAL UNLESS ALL
 SIGNATURES COMPLETED

REVISIONS		SHEET NO.	
NO.	BY:	DATE:	NO.
1			1
2			2
3			3
4			4
			TOTAL SHEETS
			43

DRAWN BY : **K. BEARD** DATE : **8/10/22**
 CHECKED BY : **D. SHACKELFORD** DATE : **8/22/22**
 DESIGN ENGINEER OF RECORD: **W.C. SMITH** DATE : **3/8/23**