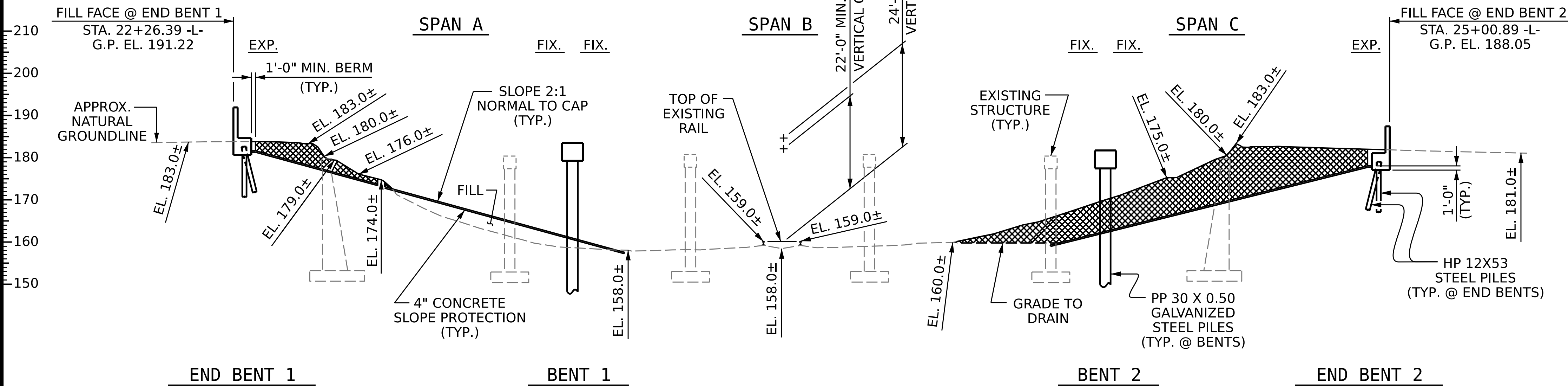


**GRADE DATA**  
 (+) 2.7500% (-) 5.0000%

P.I. STA. = 23+60.00 -L-  
 ELEV. = 199.12  
 V.C. = 890'

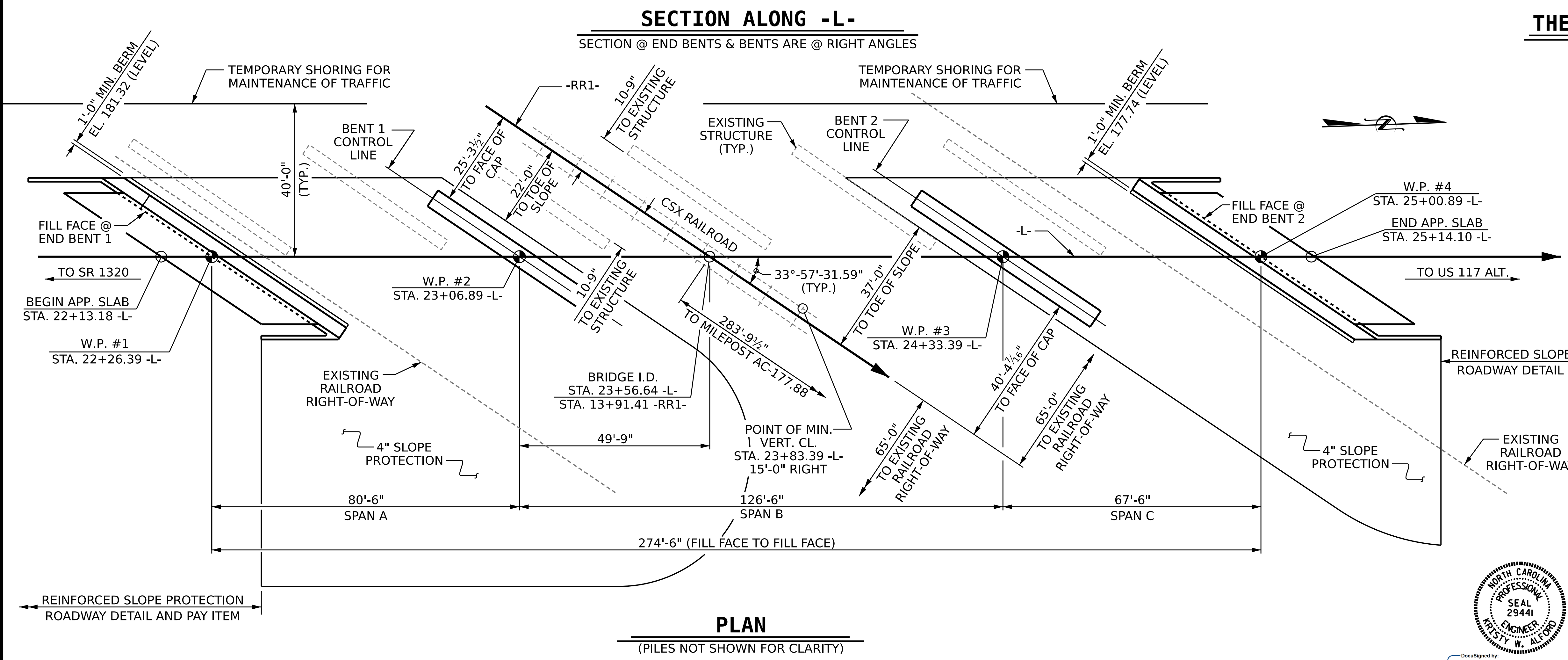
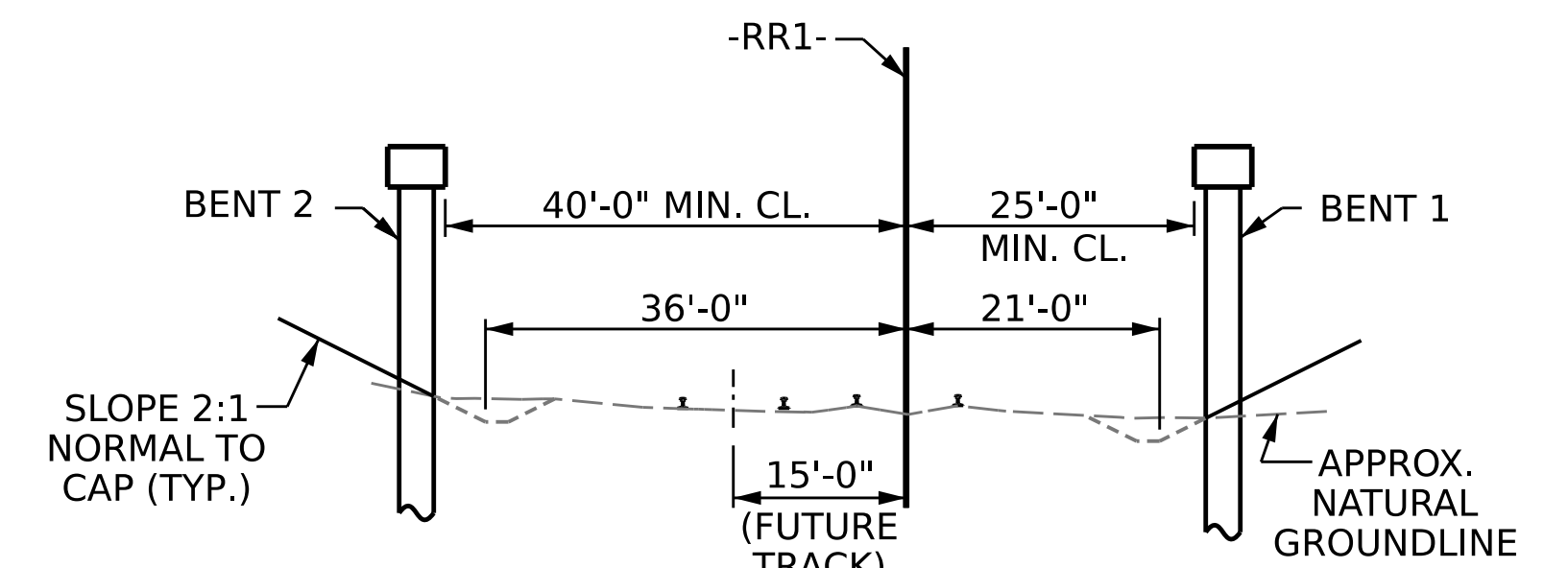


**TOP OF RAIL ELEVATIONS**

-RR1- STATION	LEFT RAIL	RIGHT RAIL
13+38.74	158.69	158.72
14+31.49	159.00	159.04
14+92.99	159.27	159.29

SURVEY DATE 8/27/2019

UNCLASSIFIED STRUCTURE EXCAVATION



PROJECT NO. **B-5981**  
 DUPLIN COUNTY  
 STATION: **23+56.64 -L-**  
**13+91.41 -RR1-**  
 MILEPOST AC-177.88 REPLACES  
 BRIDGE NO. 300016

STATE OF NORTH CAROLINA  
 DEPARTMENT OF TRANSPORTATION  
 RALEIGH  
**GENERAL DRAWING**  
 FOR BRIDGE ON US 117 (NBL)  
 OVER CSX RAILROAD  
 BETWEEN SR 1320 &  
 US 117 ALT.

Professional Engineer seals for William C. Smith (Seal 054816) and Kusty W. Alford (Seal 29441).  
 Documented by: William C. Smith, 10/24/2023

DRAWN BY: S. T. SANDOR DATE: 5/6/22  
 CHECKED BY: M. K. BEARD DATE: 9/16/22  
 DESIGN ENGINEER OF RECORD: W.C. SMITH DATE: 3/8/23

REVISIONS

NO.	BY:	DATE:	NO.	BY:	DATE:
1			3		
2			4		

DOCUMENT NOT CONSIDERED FINAL UNLESS ALL SIGNATURES COMPLETED

SHEET NO. S1-1  
 TOTAL SHEETS 43