

6/2/19

Location and Surveys

ESP ASSOCIATES, INC.
271 RACINE DRIVE, SUITE #101
WILMINGTON, NC 28403

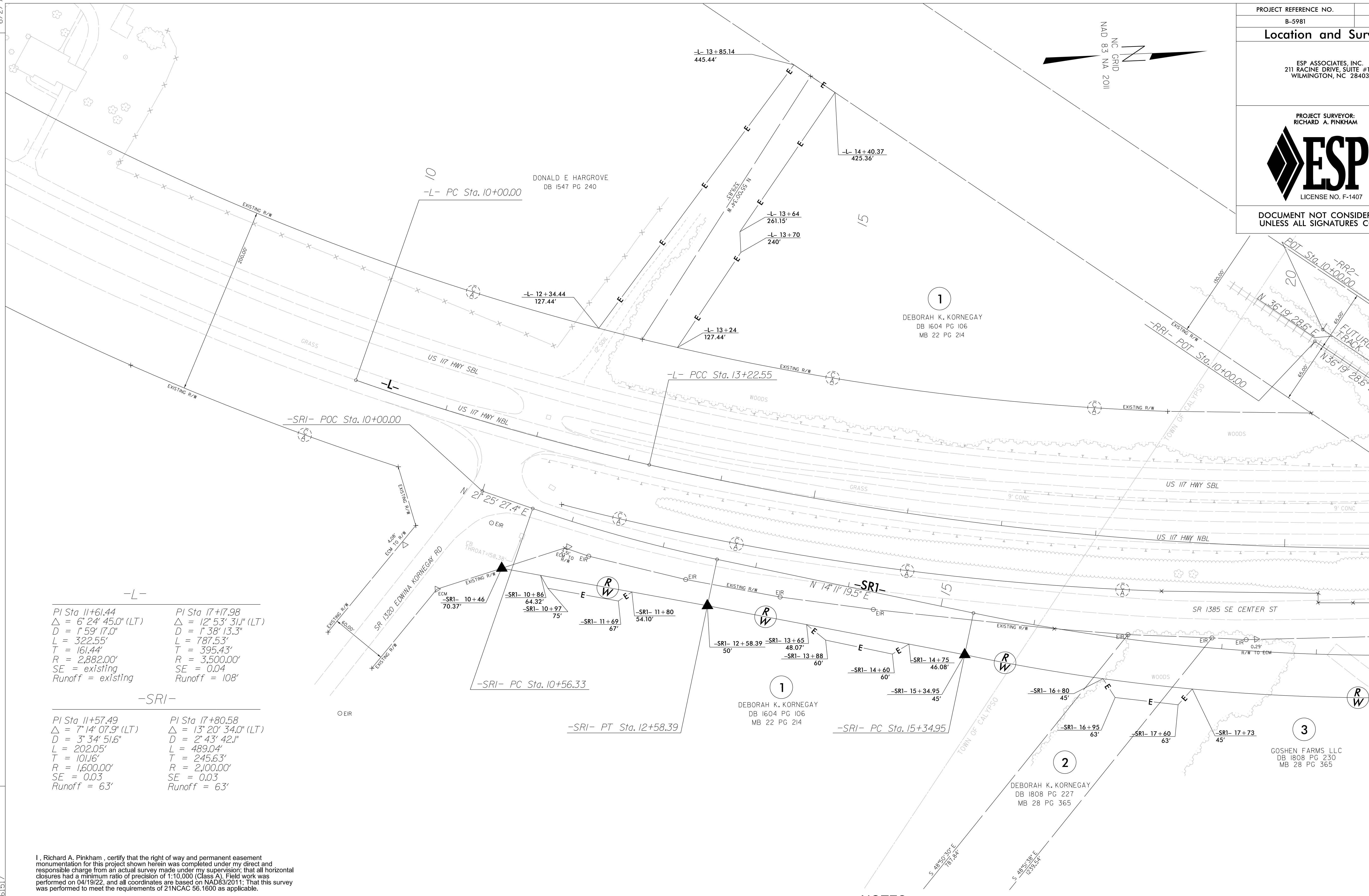


DOCUMENT NOT CONSIDERED FINAL
UNLESS ALL SIGNATURES COMPLETED



REVISIONS

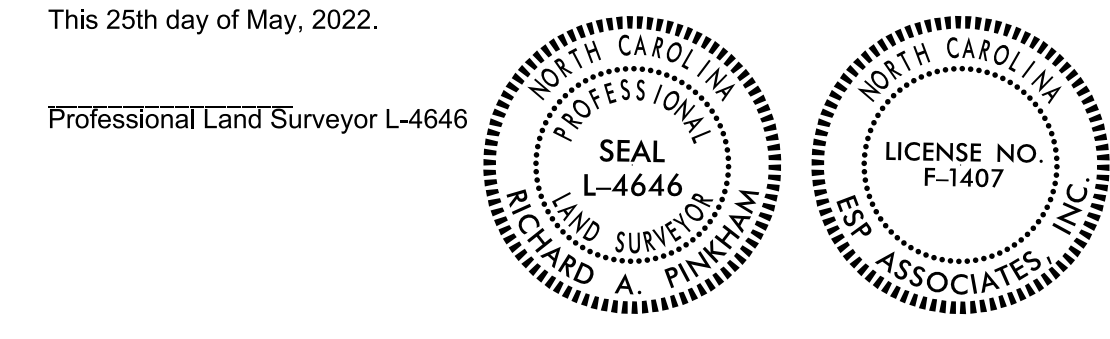
MATCHLINE -L- STA. 21+00 SEE SHEET RW05



-L-	
PI Sta 11+61.44 Δ = 6° 24' 45.0" (LT) D = 1' 59' 17.0" L = 322.55' T = 161.44' R = 2,882.00' SE = existing Runoff = existing	PI Sta 17+17.98 Δ = 12° 53' 31.1" (LT) D = 1' 38' 13.3" L = 787.53' T = 395.43' R = 3,500.00' SE = 0.04 Runoff = 108'
-SRI-	
PI Sta 11+57.49 Δ = 7° 14' 07.9" (LT) D = 3' 34' 51.6" L = 202.05' T = 101.16' R = 1,600.00' SE = 0.03 Runoff = 63'	PI Sta 17+80.58 Δ = 13° 20' 34.0" (LT) D = 2' 43' 42.1" L = 489.04' T = 245.63' R = 2,100.00' SE = 0.03 Runoff = 63'

I, Richard A. Pinkham, certify that the right of way and permanent easement monumentation for this project shown herein was completed under my direct and responsible charge from an actual survey made under my supervision; that all horizontal closures had a minimum ratio of precision of 1:10,000 (Class A). Field work was performed on 04/19/22, and all coordinates are based on NAD83/2011; That this survey was performed to meet the requirements of 21NCAC 56.1600 as applicable.

This 25th day of May, 2022.



NOTES:

1. IF FURTHER INFORMATION REGARDING PROJECT CONTROL IS NEEDED PLEASE CONTACT THE LOCATION AND SURVEYS UNIT.
2. PROJECT CONTROL WAS ESTABLISHED USING GNSS, THE GLOBAL NAVIGATION SATELLITE SYSTEM.
3. RIGHT OF WAY MONUMENTATION ESTABLISHED 04/19/22.

E:\MAX 2022\0527\1001\051_b5981_con_esp3\Location\b5981.LS_rw04.dgn
 ppetr:ucel AT ESP 22061517