

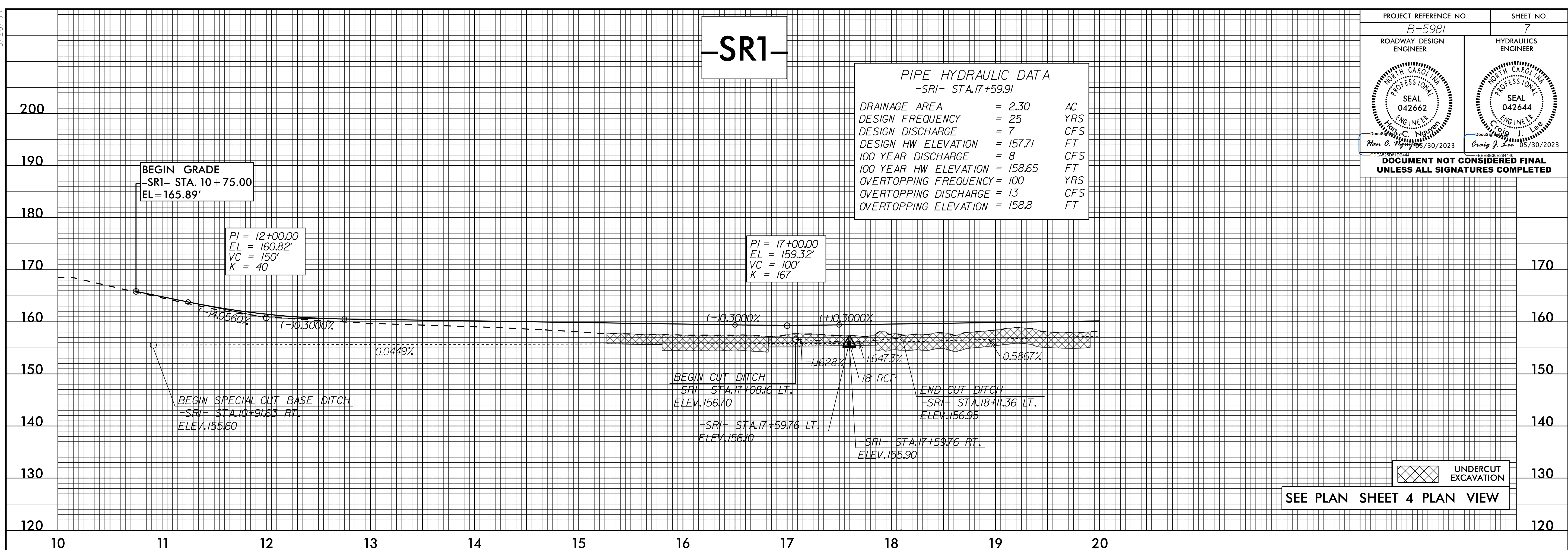
5/28/99

-SR1-

PIPE HYDRAULIC DATA
-SR1- STA.17+59.91

| | | |
|-----------------------|----------|-----|
| DRAINAGE AREA | = 2.30 | AC |
| DESIGN FREQUENCY | = 25 | YRS |
| DESIGN DISCHARGE | = 7 | CFS |
| DESIGN HW ELEVATION | = 157.71 | FT |
| 100 YEAR DISCHARGE | = 8 | CFS |
| 100 YEAR HW ELEVATION | = 158.65 | FT |
| OVERTOPPING FREQUENCY | = 100 | YRS |
| OVERTOPPING DISCHARGE | = 13 | CFS |
| OVERTOPPING ELEVATION | = 158.8 | FT |

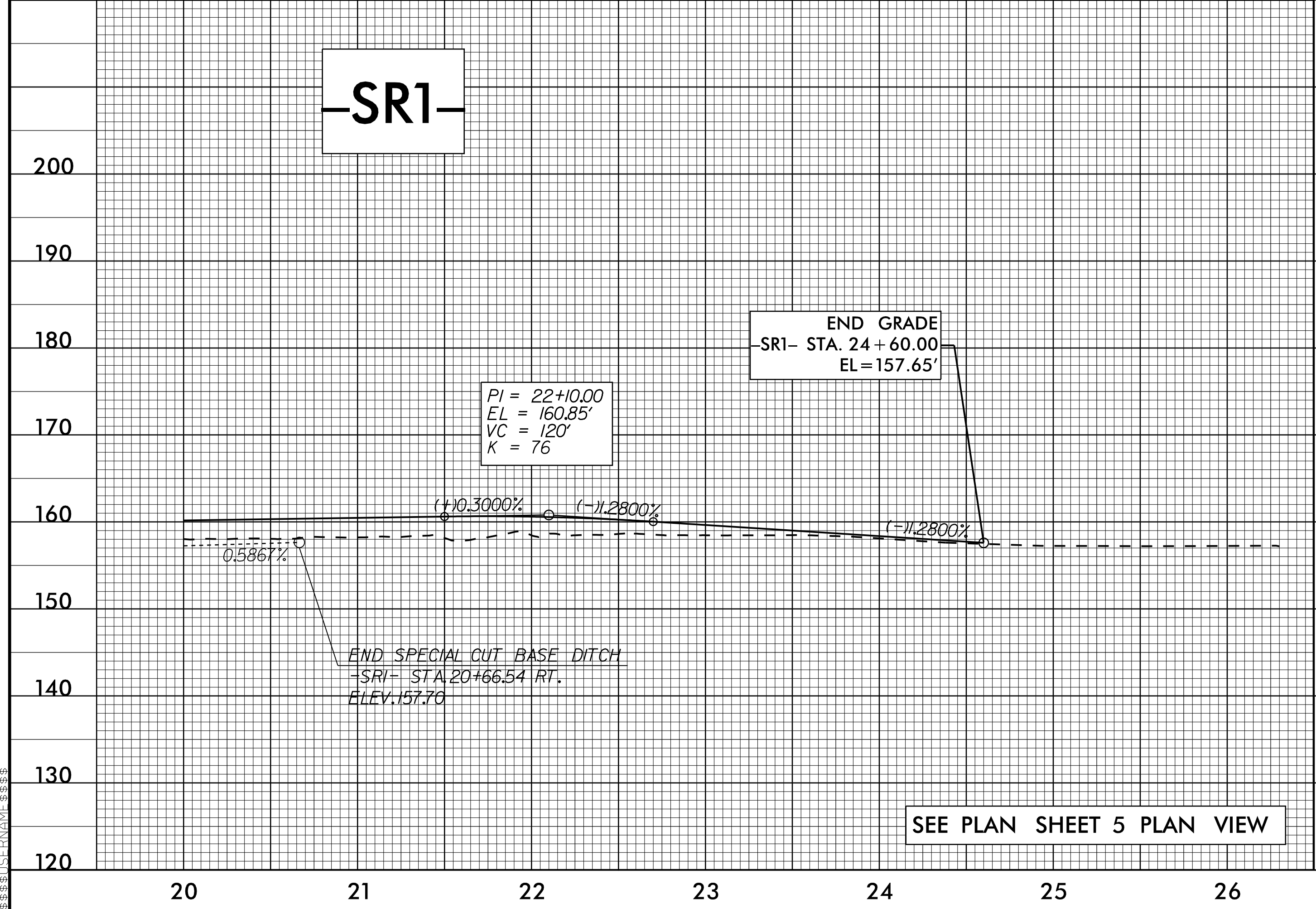
| | |
|--|-------------------------------------|
| PROJECT REFERENCE NO. B-5981 | SHEET NO. 7 |
| ROADWAY DESIGN ENGINEER Han C. Nguyen | HYDRAULICS ENGINEER Craig J. Lee |
| | |
| DOCUMENT NOT CONSIDERED FINAL UNLESS ALL SIGNATURES COMPLETED | |



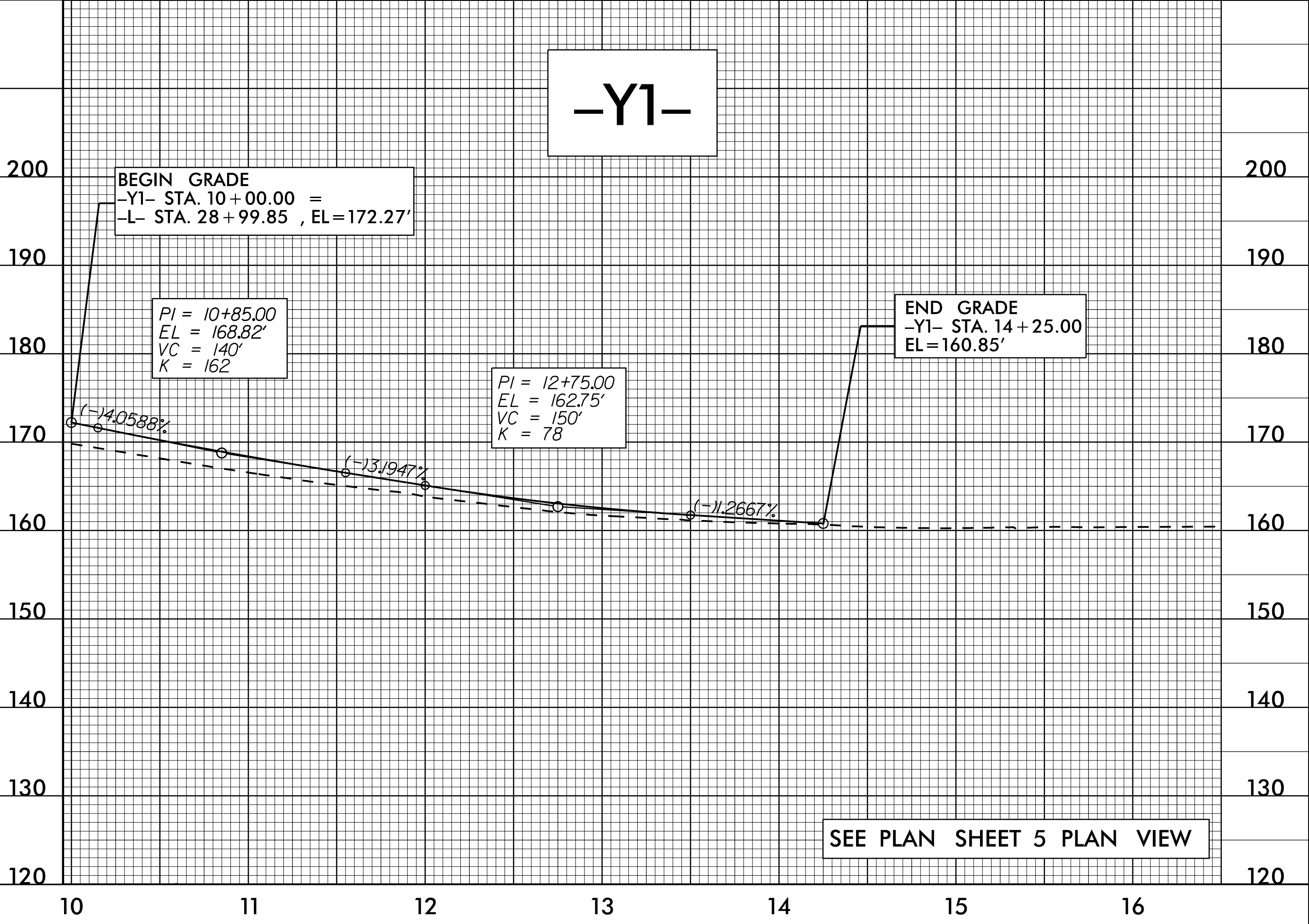
SEE PLAN SHEET 4 PLAN VIEW

-SR1-

-Y1-



SEE PLAN SHEET 5 PLAN VIEW



SEE PLAN SHEET 5 PLAN VIEW

14-MAR-2023 14:22
B5981_P1.dwg
B5981_P1.dgn