

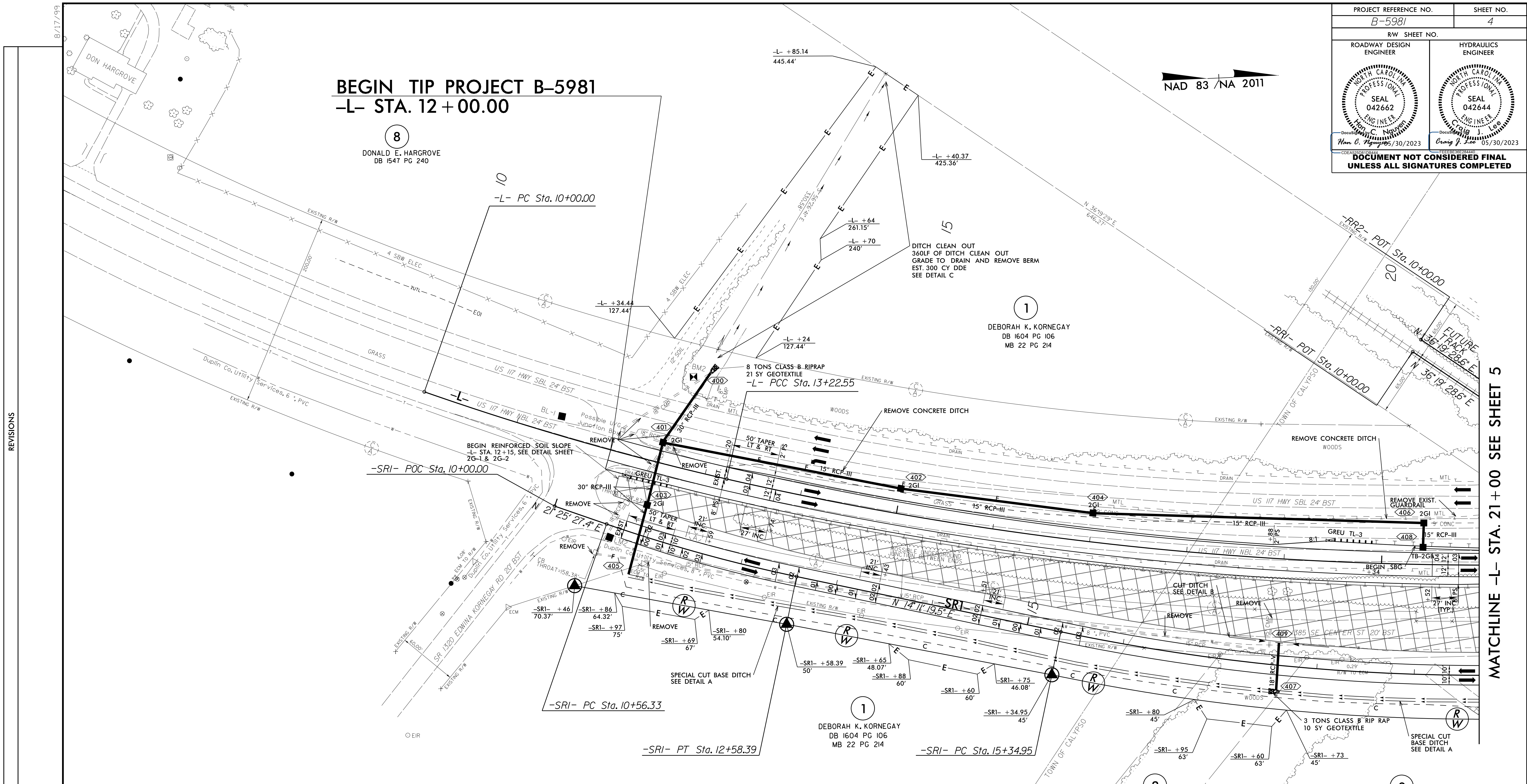
PROJECT REFERENCE NO. B-5981	SHEET NO. 4
RW SHEET NO.	
ROADWAY DESIGN ENGINEER	HYDRAULICS ENGINEER
DOCUMENT NOT CONSIDERED FINAL UNLESS ALL SIGNATURES COMPLETED	

BEGIN TIP PROJECT B-5981

-L- STA. 12+00.00

8
DONALD E. HARGROVE
DB 1547 PG 240

NAD 83 / NA 2011

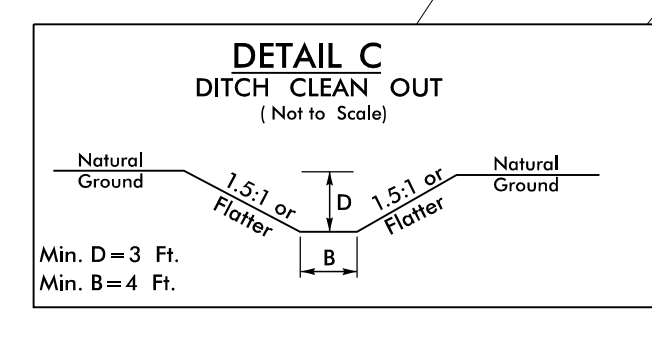
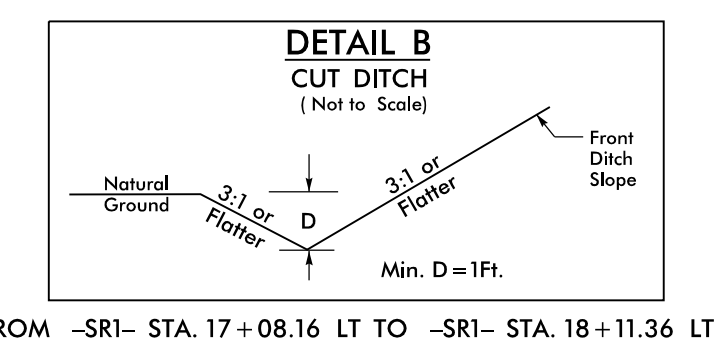
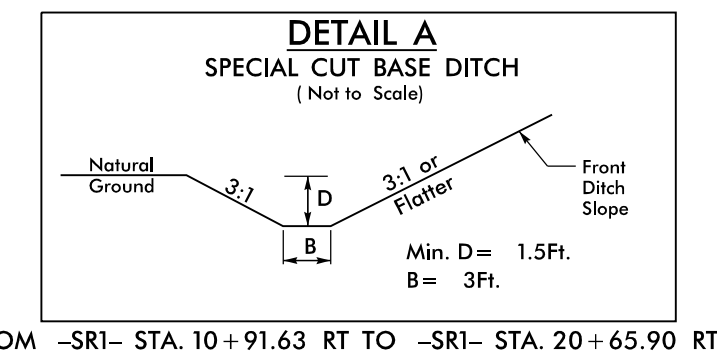
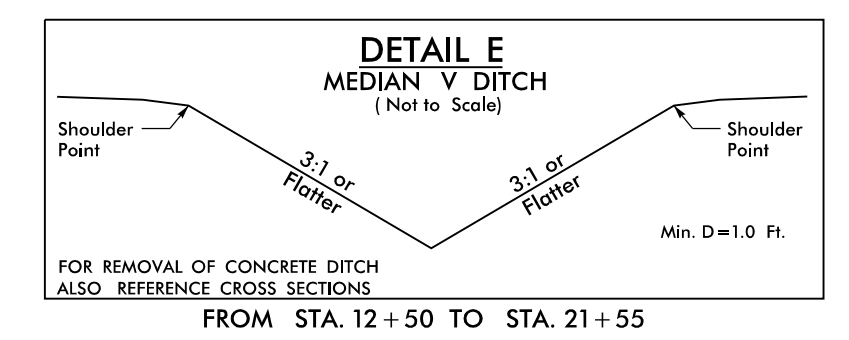


REVISIONS

MATCHLINE -L- STA. 21+00 SEE SHEET 5

-L-	
PI Sta 11+61.44 Δ = 6° 24' 45.0" (LT) D = 1' 59' 17.0" L = 322.55' T = 161.44' R = 2,882.00' SE = existing Runoff = existing	PI Sta 17+17.98 Δ = 12° 53' 31.1" (LT) D = 1' 38' 13.3" L = 787.53' T = 395.43' R = 3,500.00' SE = 0.04 Runoff = 108'

-SRI-	
PI Sta 11+57.49 Δ = 7° 14' 07.9" (LT) D = 3' 34' 51.6" L = 202.05' T = 101.16' R = 1,600.00' SE = 0.03 Runoff = 63'	PI Sta 17+80.58 Δ = 13° 20' 34.0" (LT) D = 2' 43' 42.1" L = 489.04' T = 245.63' R = 2,100.00' SE = 0.03 Runoff = 63'



REINFORCED SOIL SLOPE

FOR -L- PROFILE, SEE SHEET 6
FOR -SRI- PROFILE, SEE SHEET 7

31-MAR-2023 16:14
R:\Projects\B5981_rdy_Psh4.dgn
C:\Users\psh4\OneDrive\Documents\B5981\B5981.dwg