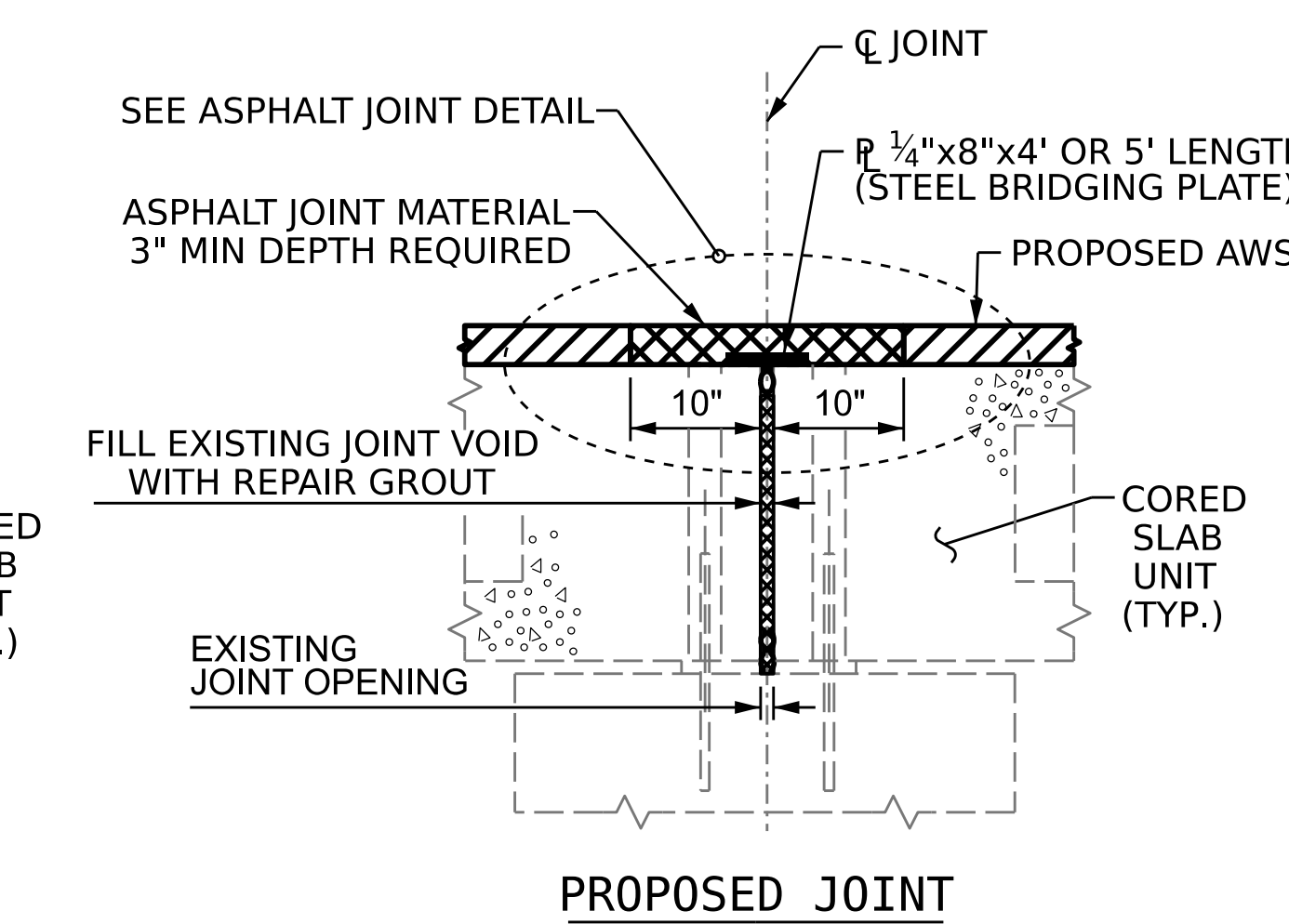
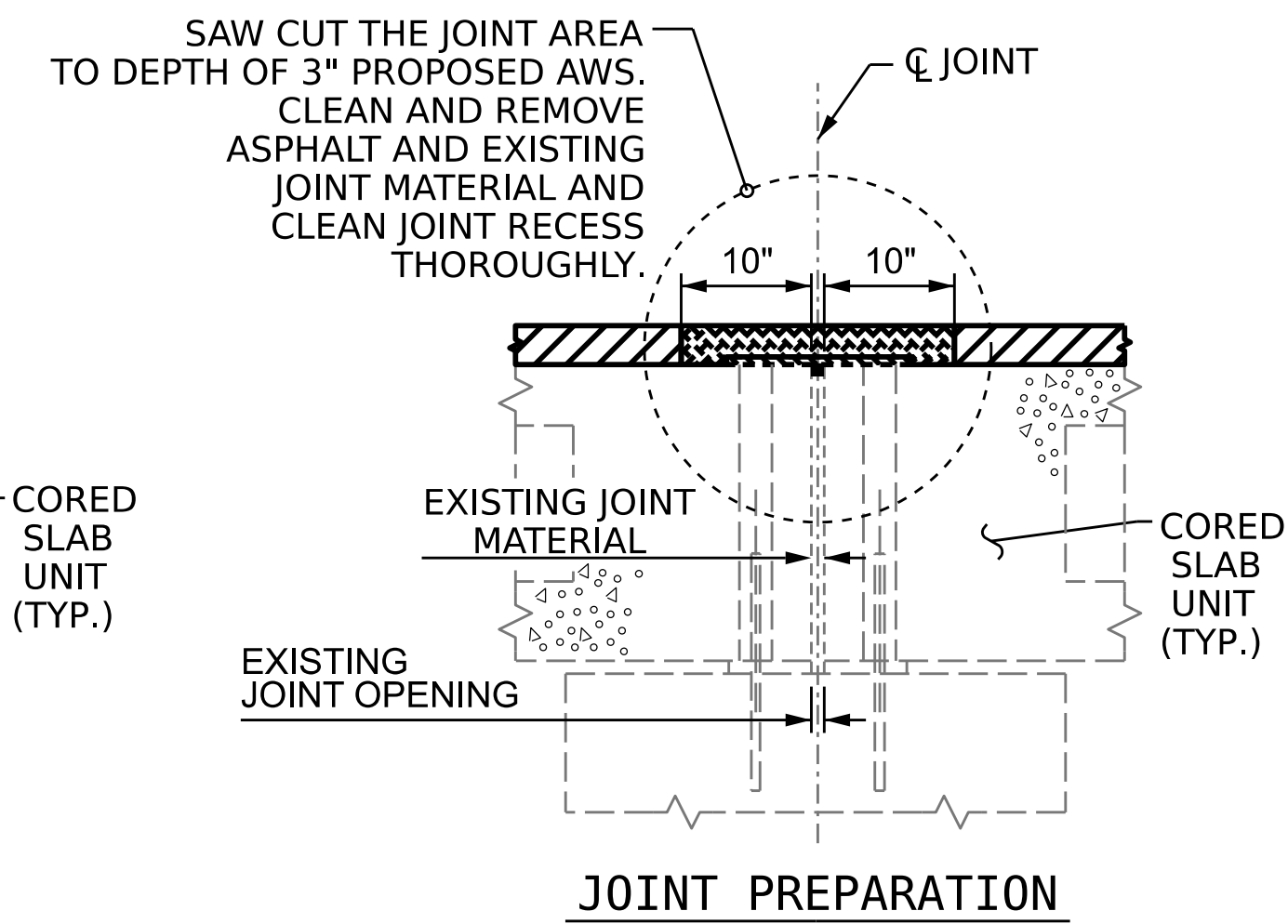
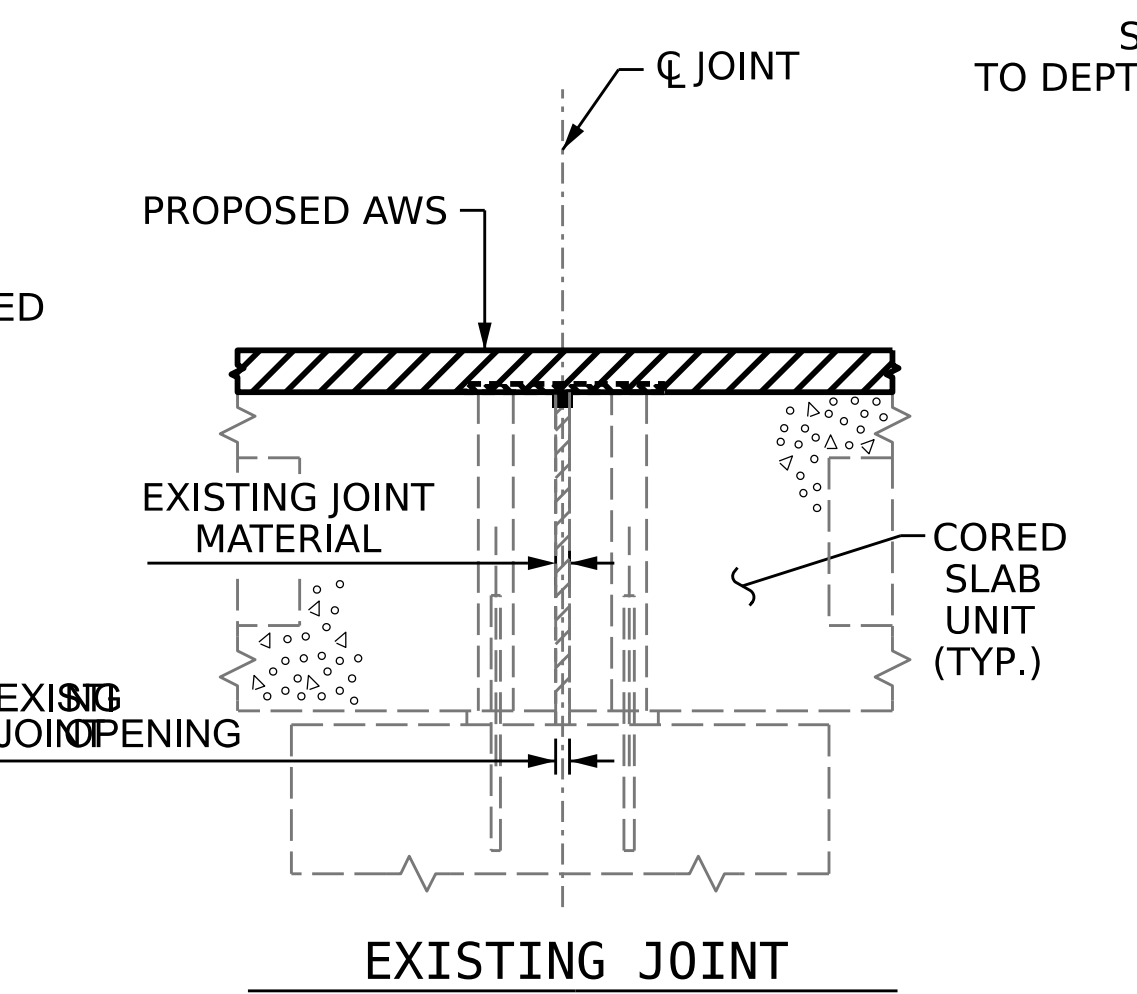
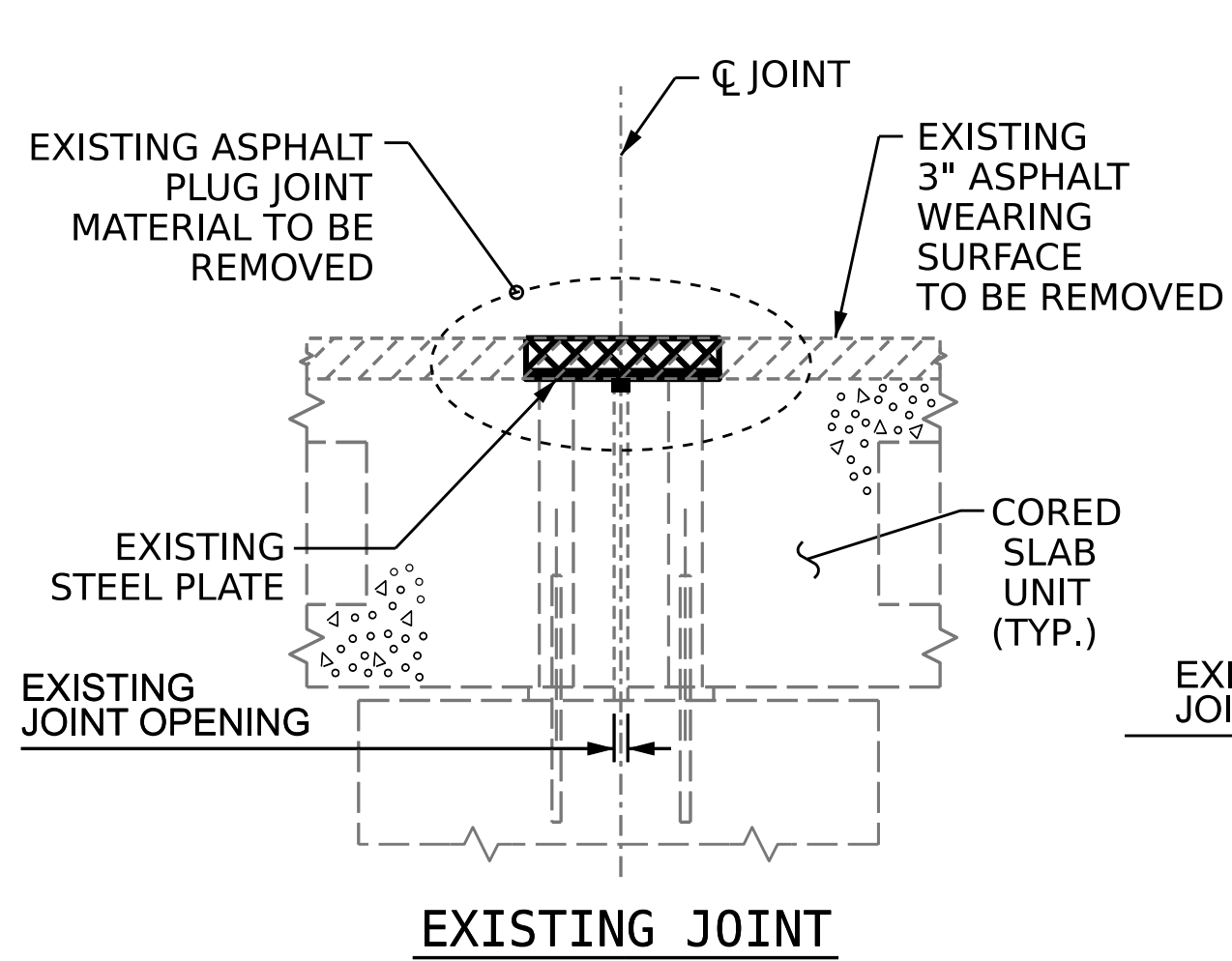


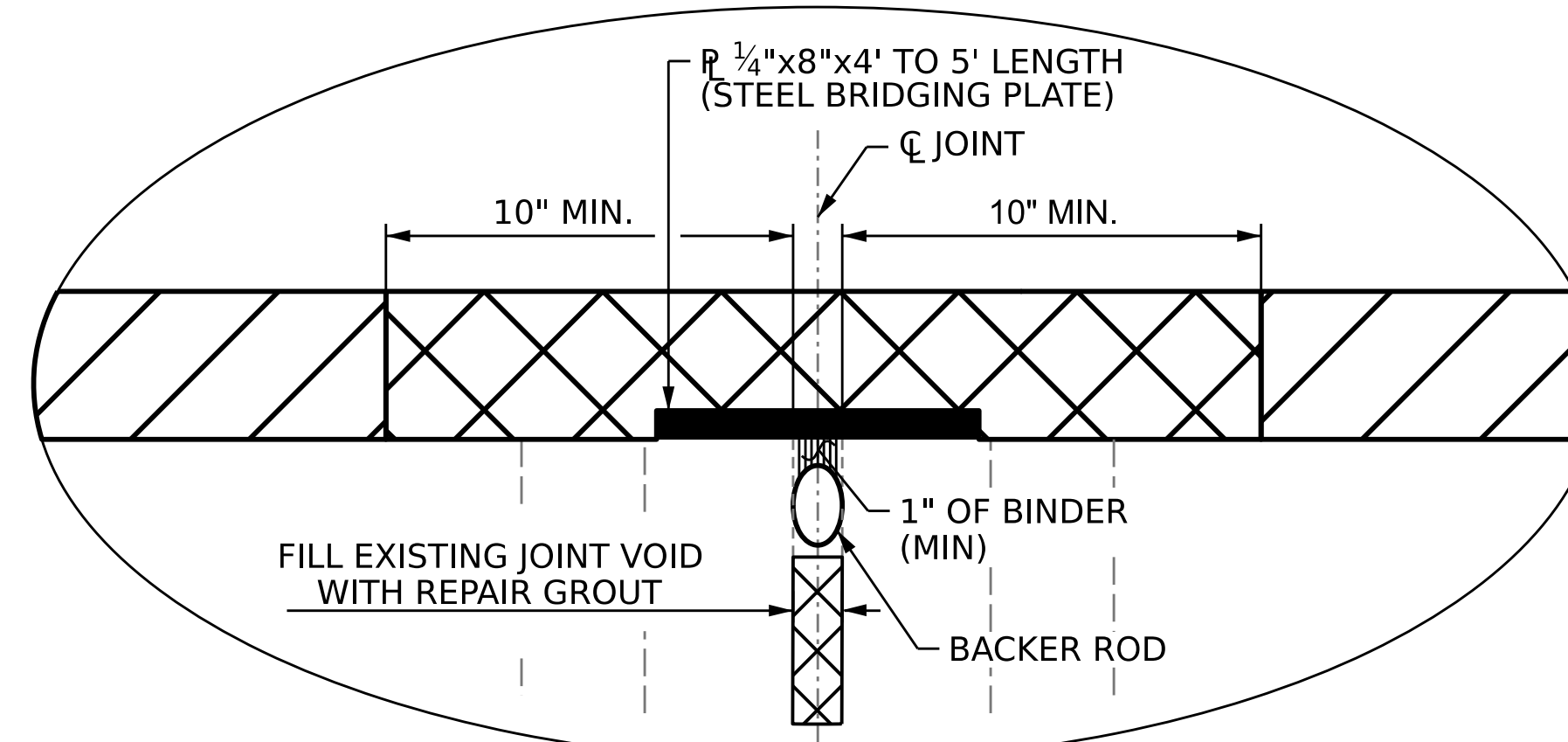
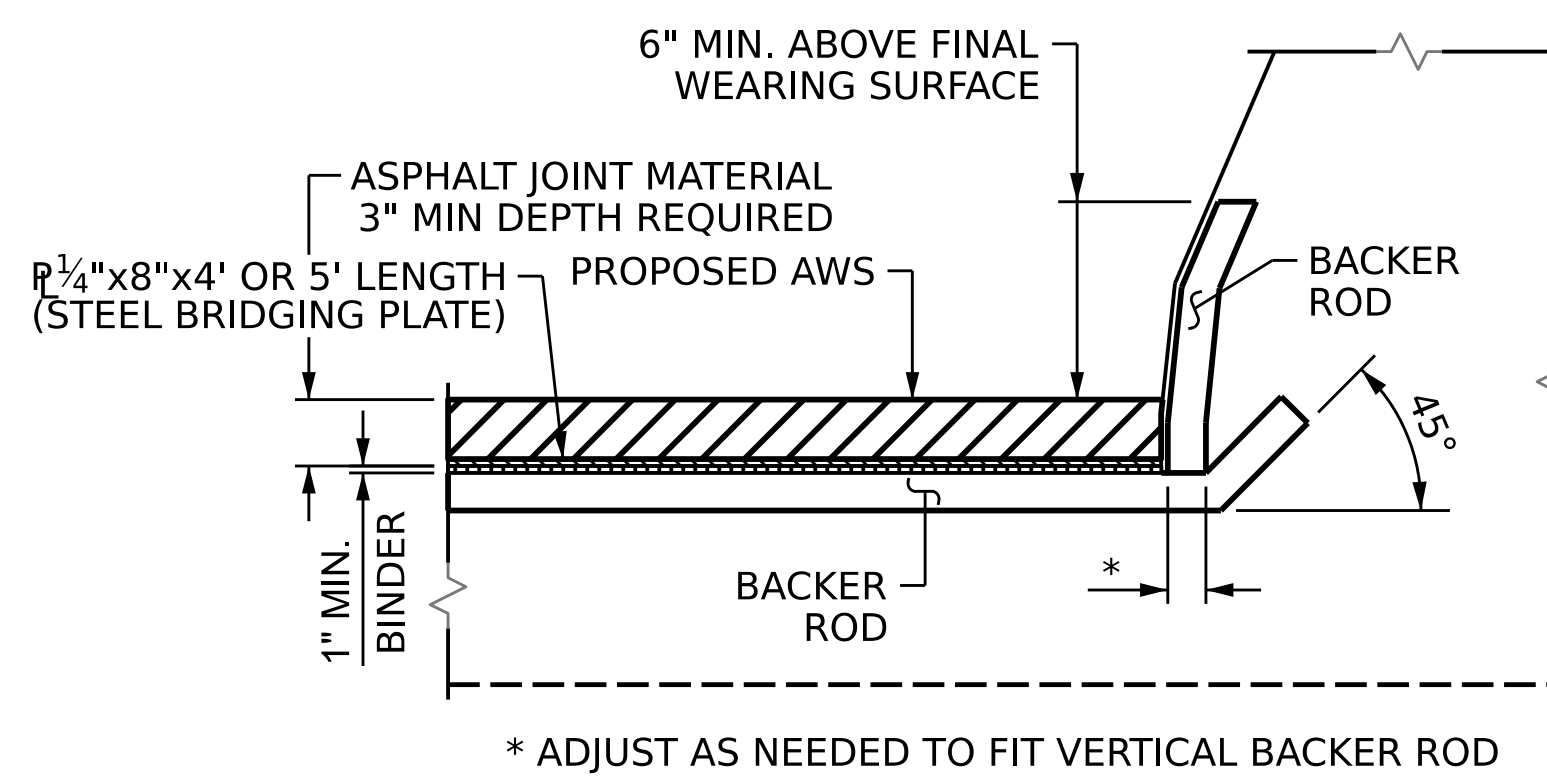
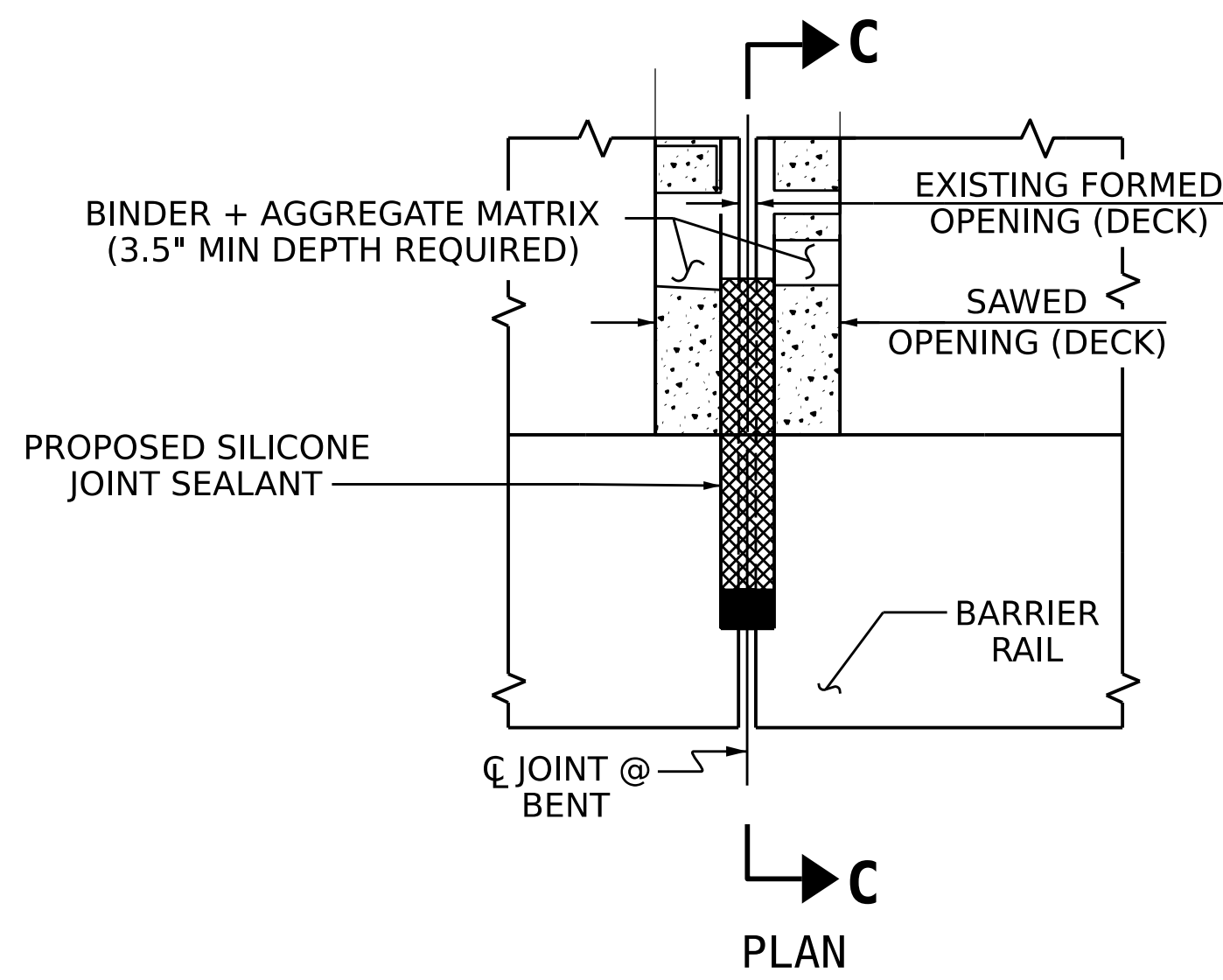
**JOINT INSTALLATION SEQUENCE AT END BENTS**

SECTION A-A



**JOINT INSTALLATION SEQUENCE AT BENTS**

SECTION B-B



INSTALL (2) BACKER RODS AT THE BOTTOM OF THE CORED SLABS PRIOR TO GROUTING

**NOTES**

PRIOR TO ASPHALT PLUG JOINT INSTALLATION, PERFORM POST-TENSIONING STRAND REPLACEMENT. SEE PLAN OF SPAN SHEET AND POST-TENSIONING REPAIR DETAIL SHEET.

REMOVE ANY EXISTING ASPHALT JOINTS PRIOR TO INSTALLATION OF THE PROPOSED ASPHALT PLUG JOINTS. PAYMENT FOR REMOVAL OF EXISTING ASPHALT JOINTS SHALL BE CONSIDERED INCIDENTAL TO THE PROPOSED ASPHALT PLUG JOINTS.

FOR ASPHALT PLUG JOINTS FOR PRESERVATION, SEE SPECIAL PROVISIONS.

THE CONTRACTOR SHALL FIELD VERIFY THE EXISTING JOINT OPENING PRIOR TO ORDERING JOINT SEAL MATERIAL. IF THE ACTUAL OPENING VARIES FROM THE OPENING INDICATED IN THE DETAIL BY MORE THAN A 1/4", NOTIFY THE ENGINEER. REVISION OF THE JOINT SEAL SIZE MIGHT BE NECESSARY.

THE CONTRACTOR SHALL TAKE CARE DURING JOINT REPAIR OPERATIONS NOT TO DROP ANY MATERIAL BELOW THE BRIDGE WITHOUT PROTECTIVE DEVICES BELOW TO CATCH THE MATERIAL. ANY MATERIAL THAT FALLS BELOW THE BRIDGE SHALL BE CONTAINED, REMOVED AND DISPOSED OF BY THE CONTRACTOR AT NO EXTRA COST TO THE DEPARTMENT. IF THE ENGINEER DETERMINES THAT THE PROTECTIVE DEVICES ARE NOT ADEQUATE OR NOT BEING EMPLOYED, THE WORK SHALL BE SUSPENDED UNTIL ADEQUATE PROTECTION IS PROVIDED.

THE CONTRACTOR WILL NOT BE PERMITTED TO FORM THE JOINTS IN LIEU OF SAWING THE JOINTS.

BACKER ROD SHALL BE INSTALLED AS PER THE MANUFACTURER'S RECOMMENDATIONS.

THE INSTALLATION OF THE BACKER ROD AND ASPHALT PLUG JOINT SEAL SHALL BE WATERTIGHT.

FOR CONCRETE FOR DECK REPAIR, SEE SPECIAL PROVISIONS.

THE ASPHALT PLUG JOINT STEEL BRIDGING PLATE SHALL BE A MINIMUM OF 36 KSI STEEL.

THE ASPHALT JOINT STEEL BRIDGING PLATE THICKNESS SHALL BE A MINIMUM OF 1/4".

**JOINT REPAIR QUANTITIES**

	ESTIMATE	ACTUAL
ASPHALT PLUG JOINTS FOR PRESERVATION	176.8 LF	

PROJECT NO. **HI-0017**  
**ROBESON** COUNTY  
 BRIDGE NO. **770455**



STATE OF NORTH CAROLINA  
 DEPARTMENT OF TRANSPORTATION  
 RALEIGH

**JOINT REPAIR DETAILS**

DRAWN BY: J. BALDWIN DATE: 07/2022  
 CHECKED BY: S. WANCE DATE: 11/2022

DOCUMENT NOT CONSIDERED FINAL UNLESS ALL SIGNATURES COMPLETED

REVISIONS			SHEET NO.		
NO.	BY:	DATE:	NO.	BY:	DATE:
1			3		
2			4		

TOTAL SHEETS: 7