

**NOTES:**

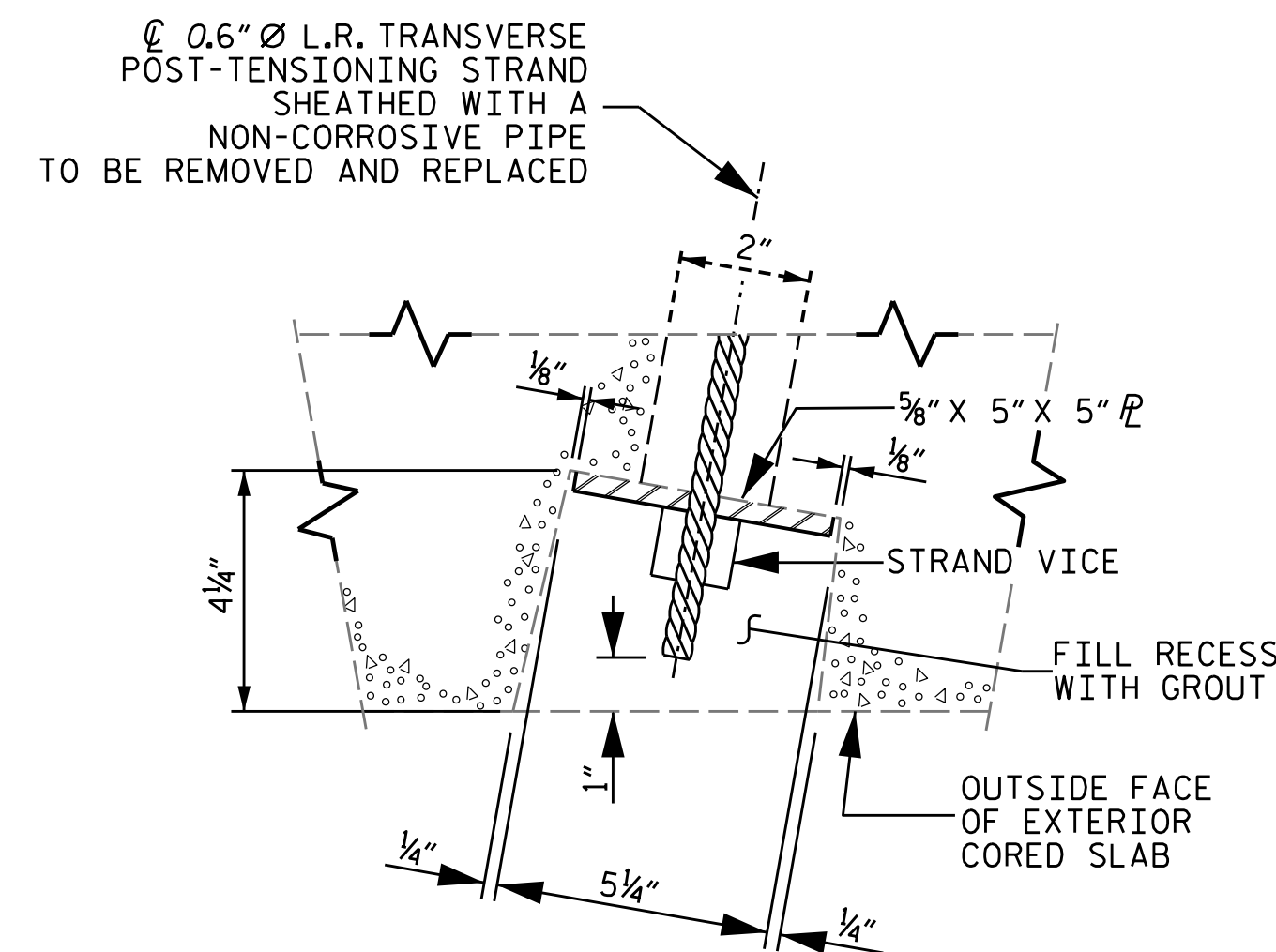
FOR POST-TENSIONING STRAND REPLACEMENT, SEE PCCS POST-TENSIONING STRAND REPLACEMENT SPECIAL PROVISION.

ALL POST-TENSIONING STRANDS SHALL BE 7-WIRE LOW RELAXATION GRADE 270 STRANDS AND SHALL CONFORM TO ASSHTO M203 EXCEPT FOR SAMPLING REQUIREMENTS WHICH SHALL BE IN ACCORDANCE WITH THE STANDARD SPECIFICATIONS.

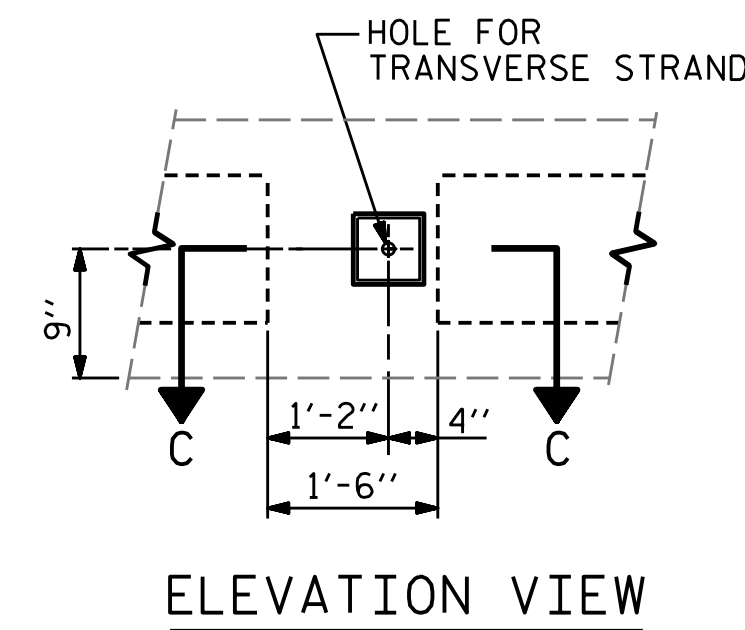
RECESSES FOR TRANSVERSE STRANDS SHALL BE GROUTED AFTER THE FINAL TENSIONING OF THE STRANDS.

FOR "GROUT FOR STRUCTURES," SEE SPECIAL PROVISIONS.

FLAME CUTTING OF TRANSVERSE POST-TENSIONING STRANDS IS NOT ALLOWED.



GROUTED RECESS AT END OF POST-TENSIONED STRAND CORED SLABS



PCCS POST-TENSIONING SEQUENCE

PERFORM P/T IN STAGES AFTER DECK SURFACE PREPARATION IS COMPLETE.

REMOVE EXISTING P/T, INSTALL NEW P/T STRANDS, AND TENSION AND MAINTAIN AN INITIAL LOAD OF 10,000 LBS.

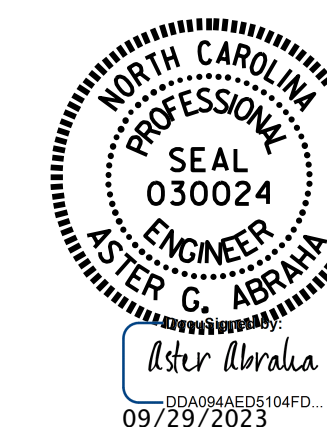
THE CONTRACTOR SHALL MAINTAIN A SYMMETRIC TENSION FORCE BETWEEN EACH PAIR OF TRANSVERSE POST-TENSIONING STRANDS IN THE SPAN.

APPLY THE FINAL P/T LOAD OF 43,950 LBS.

**SUMMARY OF QUANTITIES**

	ESTIMATE	ACTUAL
POST-TENSIONING STRAND REPLACEMENT	6 EA.	

PROJECT NO. HI-0017  
ROBESON COUNTY  
 BRIDGE NO. 770455



STATE OF NORTH CAROLINA  
 DEPARTMENT OF TRANSPORTATION  
 RALEIGH

**POST-TENSIONING STRAND REPAIR DETAILS**

DRAWN BY : J. BALDWIN DATE : 11/2022  
 CHECKED BY : S. WANCE DATE : 11/2022

DOCUMENT NOT CONSIDERED FINAL UNLESS ALL SIGNATURES COMPLETED

REVISIONS						SHEET NO.
NO.	BY:	DATE:	NO.	BY:	DATE:	
1			3			S5-4
2			4			TOTAL SHEETS 7