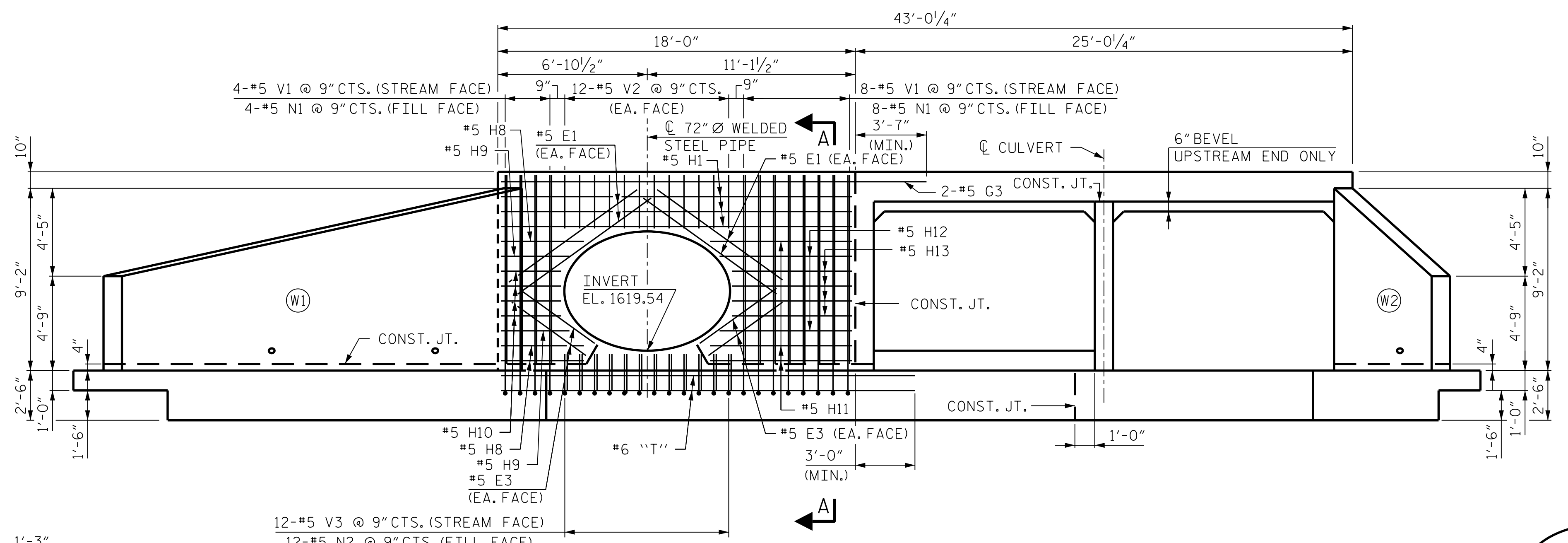
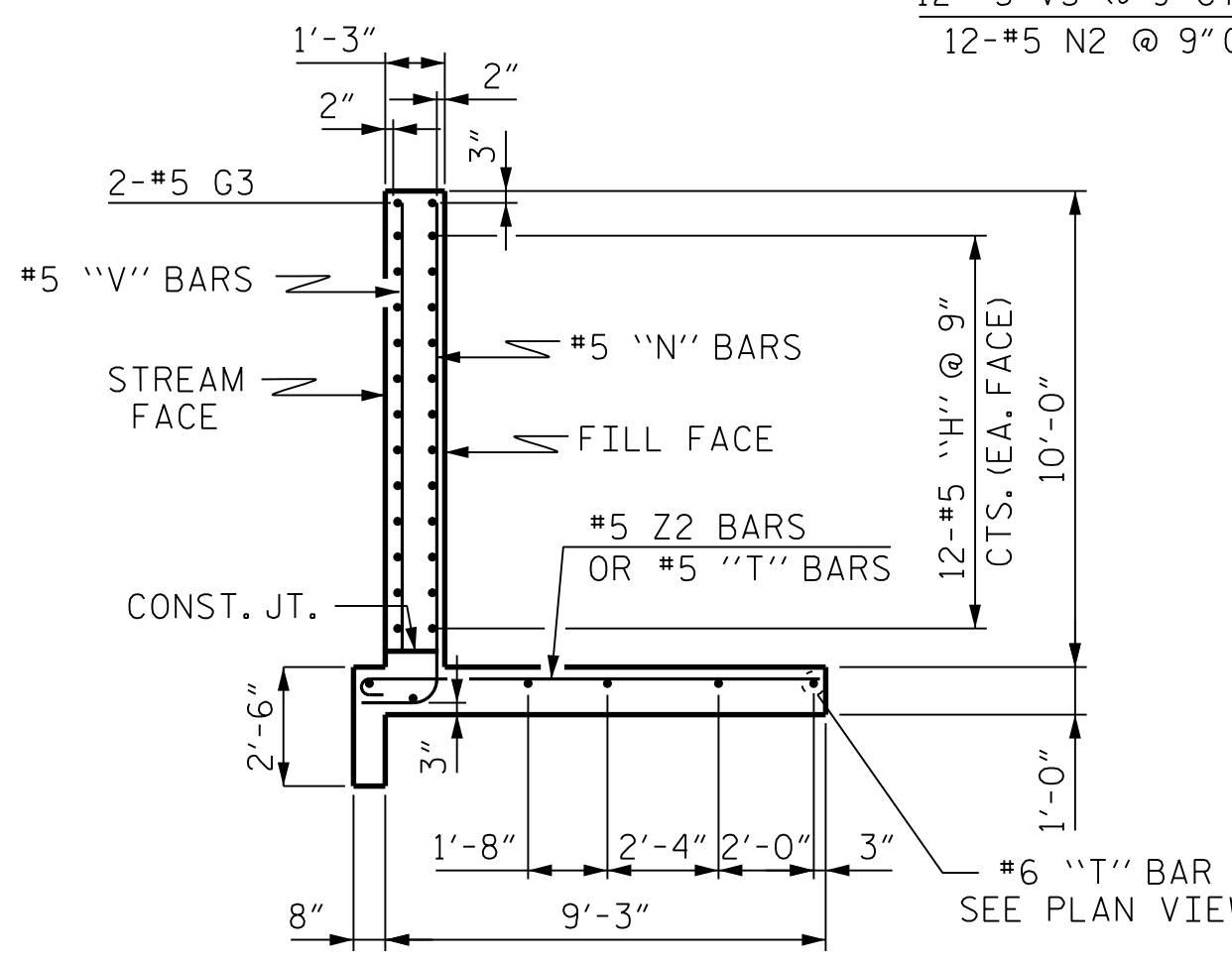


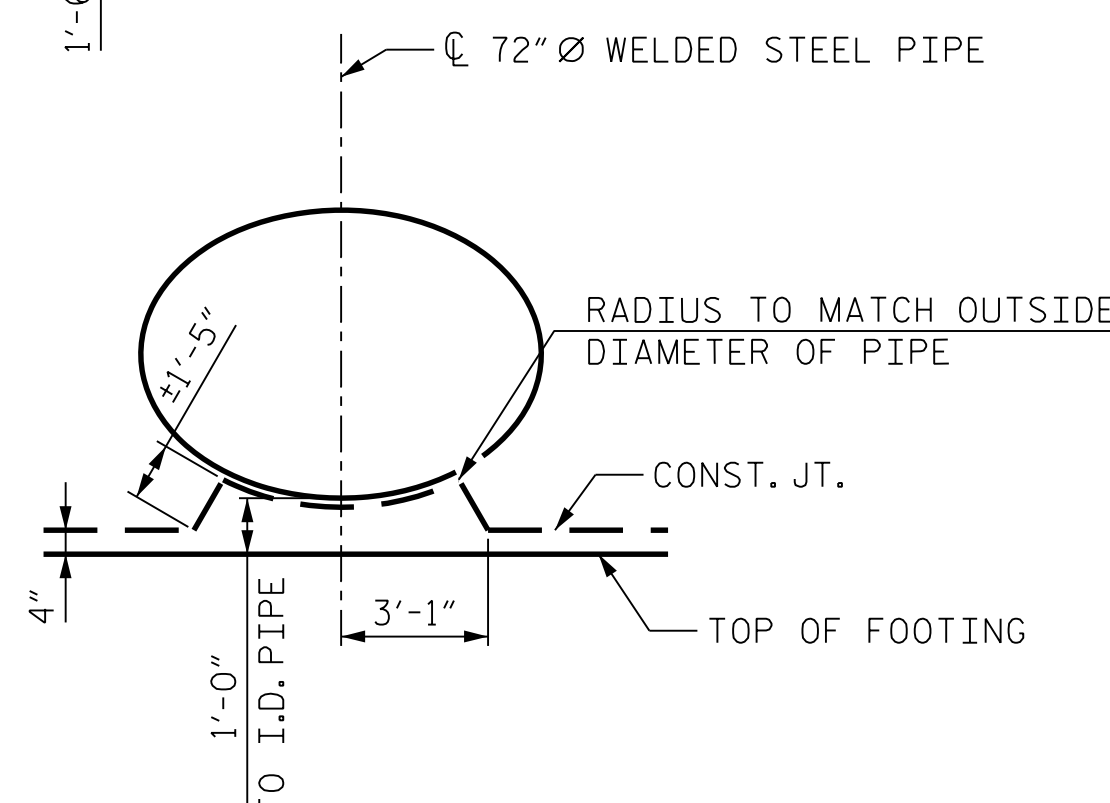
8/31/2023 R:\Structures\Culverts\Culvert 6 - CobbCreek\GNN\Final\R-5861_SMU_CU_6-10_190003.dgn



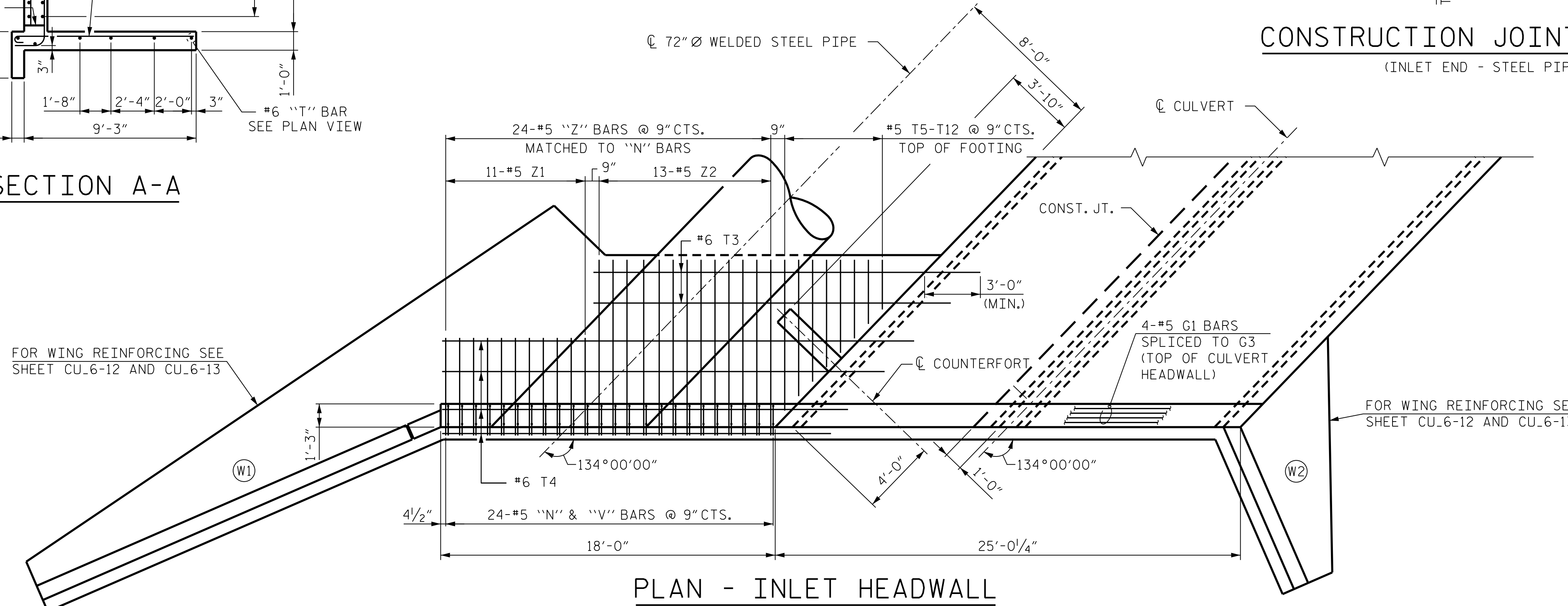
END ELEVATION - NORMAL TO SKEW
(INLET END)



SECTION A-A



CONSTRUCTION JOINT DETAIL
(INLET END - STEEL PIPE)



PLAN - INLET HEADWALL
(RIGHT EXTENSION)

(SHIFT BARS AS REQUIRED TO MISS CULVERT BOTTOM SLAB STEEL)

BAR TYPE	
①	6" RAD. 1'-0 1/2" 10'-1" 1'-0" N1 N2
②	7" 7" 9'-6" 5'-3" Z2 Z1

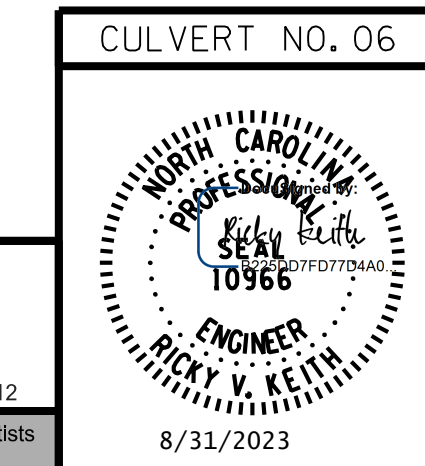
DIMENSIONS ARE OUT TO OUT

BILL OF MATERIAL INLET END					
BAR	NO.	SIZE	TYPE	LENGTH	WEIGHT
E1	8	#5	STR.	8'-4"	70
E3	8	#5	STR.	4'-10"	40
G3	2	#5	STR.	21'-5"	45
H1	6	#5	STR.	17'-8"	111
H8	6	#5	STR.	4'-2"	26
H9	4	#5	STR.	3'-8"	15
H10	8	#5	STR.	3'-0"	25
H11	6	#5	STR.	7'-1"	44
H12	4	#5	STR.	6'-8"	28
H13	8	#5	STR.	5'-11"	49
N1	12	#5	1	11'-11"	149
N2	12	#5	1	2'-10"	35
T3	2	#6	STR.	20'-10"	63
T4	4	#6	STR.	25'-6"	153
T5	1	#5	STR.	8'-1"	8
T6	1	#5	STR.	7'-4"	8
T7	1	#5	STR.	6'-7"	7
T8	1	#5	STR.	5'-9"	6
T9	1	#5	STR.	5'-0"	5
T10	1	#5	STR.	4'-3"	4
T11	1	#5	STR.	3'-5"	4
T12	1	#5	STR.	2'-8"	3
V1	12	#5	STR.	9'-6"	119
V2	24	#5	STR.	2'-5"	60
V3	12	#5	STR.	1'-1"	14
Z1	11	#5	2	5'-10"	67
Z2	13	#5	2	10'-1"	137
REINFORCING STEEL				1,295 LBS.	
CLASS A CONCRETE				14.3 C.Y.	

NOTE:
BARS MAY BE SHIFTED SLIGHTLY TO ACCOMMODATE 72" W.S.P.

PROJECT NO. R-5861
CHEROKEE COUNTY
STATION: 71+92.10 -L-

SHEET 10 OF 15



STATE OF NORTH CAROLINA
DEPARTMENT OF TRANSPORTATION
RALEIGH
72" Ø WELDED STEEL PIPE HEADWALL INLET END

RK&K
P: (919) 878-9560
8601 Six Forks Road, Forum 1 Suite 700
Raleigh, North Carolina 27615 | NC License No. F-0112
Engineers | Construction Managers | Planners | Scientists
www.rkk.com

REVISIONS						SHEET NO.
NO.	BY:	DATE:	NO.	BY:	DATE:	
1			3			TOTAL SHEETS
2			4			15

DOCUMENT NOT CONSIDERED FINAL UNLESS ALL SIGNATURES COMPLETED