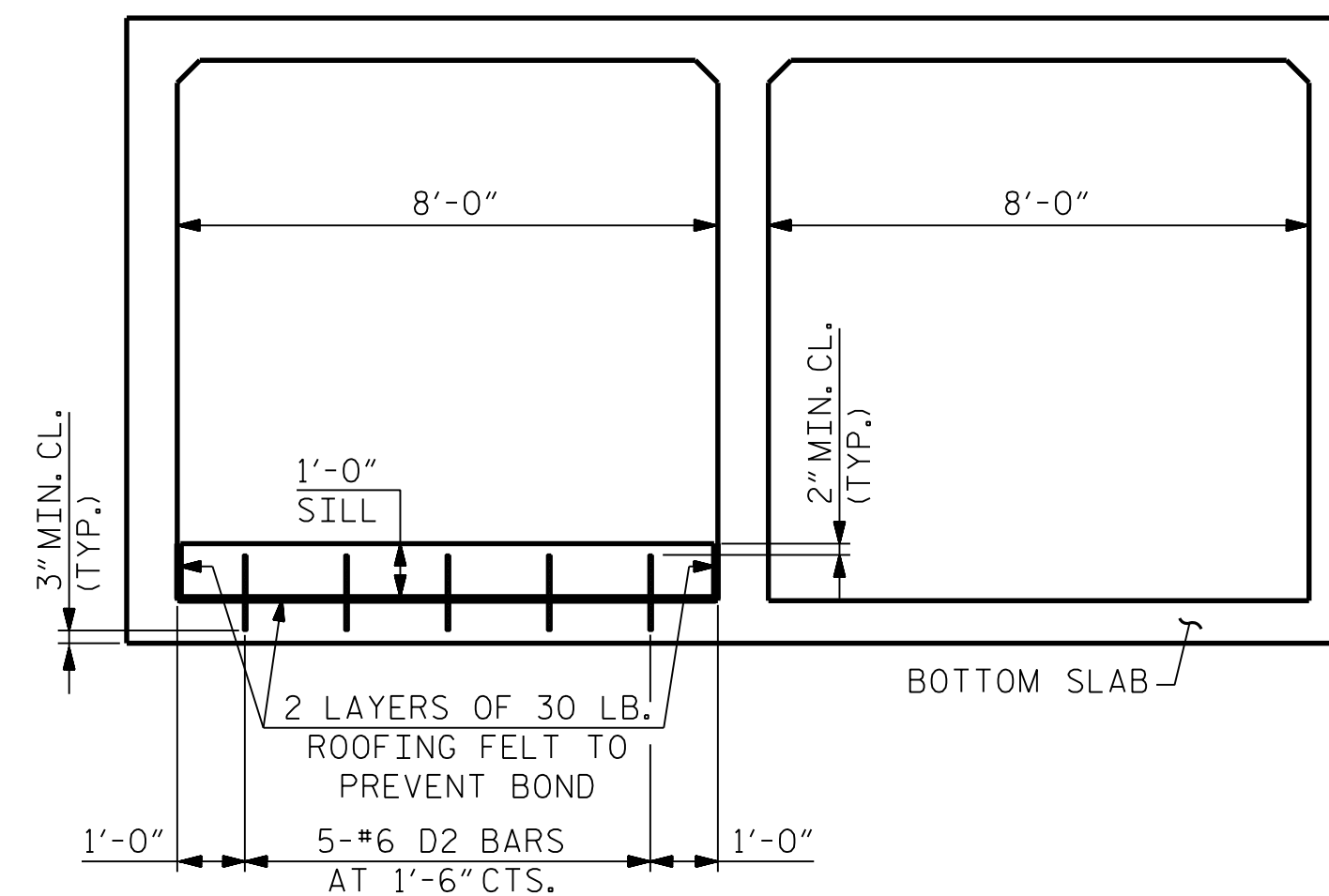
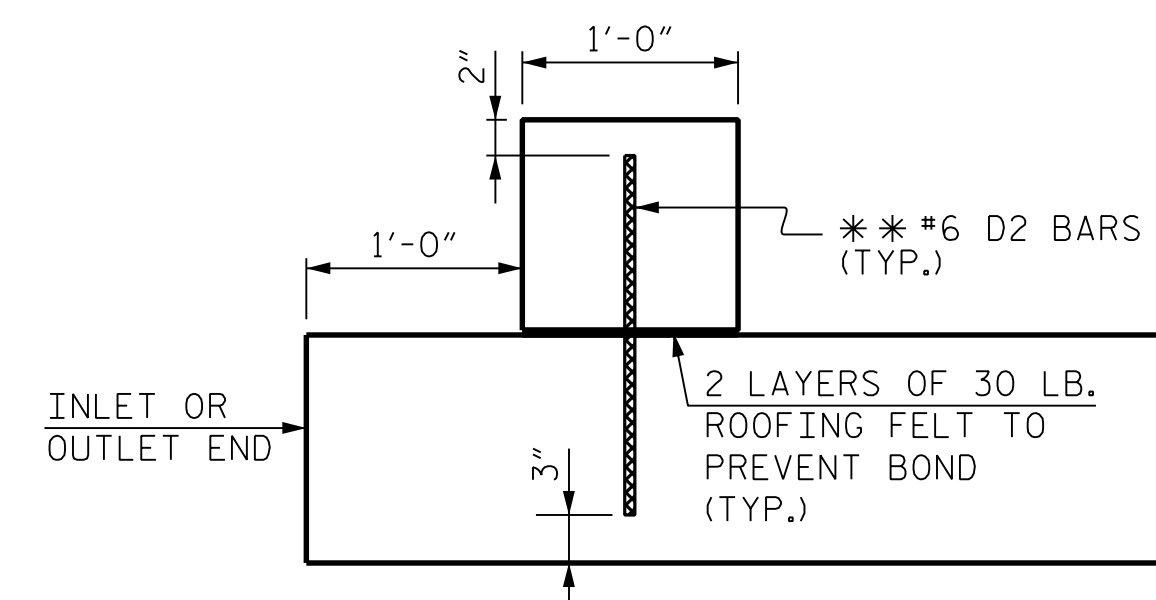


STAGE II STAGE I
RIGHT ANGLE SECTION OF BARREL
 (THERE ARE 72 'C' BARS IN SECTION OF BARREL)
 (LOOKING DOWNSTREAM)

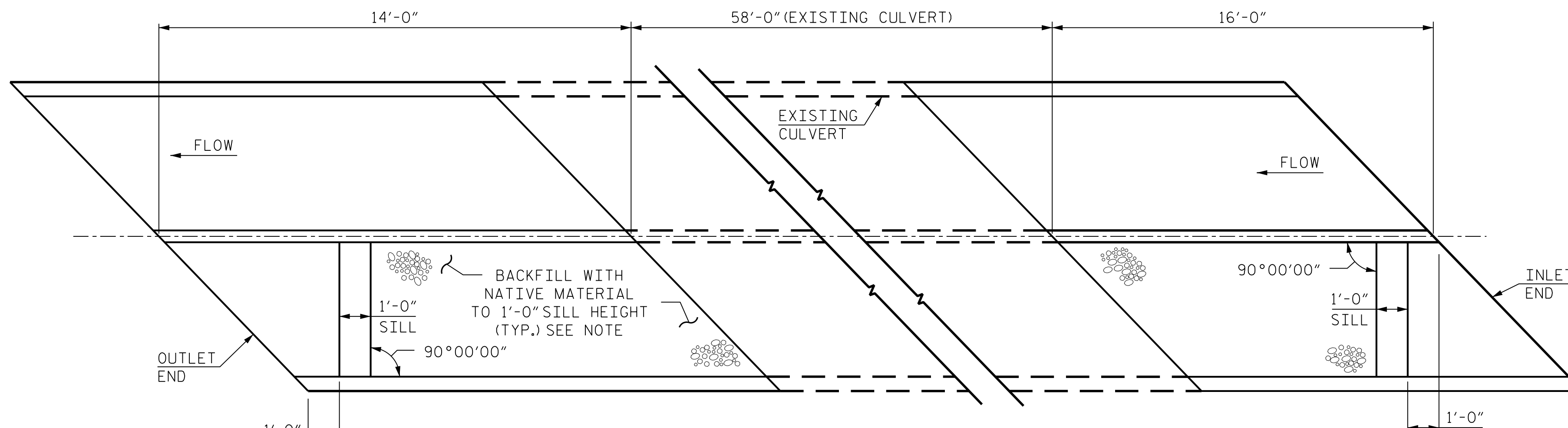
NOTE: FOR STAGE I 'A' BAR EXTENSIONS BEYOND CONSTRUCTION JOINT IN BOTTOM SLAB, SEE SHEET CU-6-4.



SILL ELEVATION
 DOWEL SPACING SHOWN PERPENDICULAR TO CULVERT BARREL
 (LOOKING DOWN STREAM)



SECTION THROUGH SILL
 ** DOWELS MAY BE PUSHED INTO GREEN CONCRETE AFTER SLAB HAS BEEN FLOAT FINISHED.



SILL PLAN

NOTE:
 NATIVE MATERIAL CONSISTS OF MATERIAL THAT IS EXCAVATED FROM THE STREAM BED OR FLOODPLAIN AT THE PROJECT SITE DURING CULVERT CONSTRUCTION. ONLY MATERIAL THAT IS EXCAVATED FROM THE STREAMBED MAY BE USED TO LINE THE BOTTOM OF THE CULVERT BARREL. RIP RAP MAY BE USED TO SUPPLEMENT THE NATIVE MATERIAL IN THE HIGH FLOW BARREL.
 IF RIP RAP IS USED TO LINE THE HIGH FLOW BARREL, NATIVE MATERIAL SHOULD BE PLACED ON TOP TO FILL VOIDS AND PROVIDE A FLAT SURFACE FOR ANIMAL PASSAGE.
 NATIVE MATERIAL IS SUBJECT TO APPROVAL BY THE ENGINEER AND MAY BE SUBJECT TO PERMIT CONDITIONS.

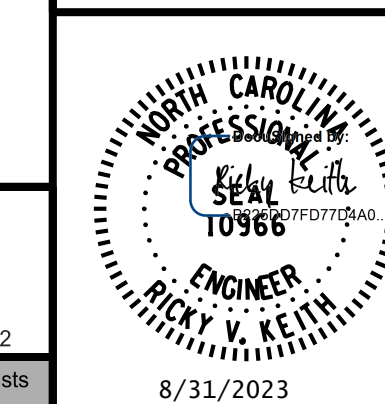
PROJECT NO. R-5861
CHEROKEE COUNTY
 STATION: 71+92.10 -L-

SHEET 8 OF 15

STATE OF NORTH CAROLINA
 DEPARTMENT OF TRANSPORTATION
 RALEIGH

DOUBLE 8 FT. X 8 FT.
 CONCRETE BOX CULVERT
 LEFT AND RIGHT EXTENSION
 134° SKEW

CULVERT NO. 06



Engineers | Construction Managers | Planners | Scientists
 www.rkk.com
 Responsive People | Creative Solutions

REVISIONS				SHEET NO.			
NO.	BY:	DATE:	NO.	BY:	DATE:	CU-6-8	
1			3			TOTAL SHEETS	
2			4			15	

**DOCUMENT NOT CONSIDERED FINAL
 UNLESS ALL SIGNATURES COMPLETED**

8/31/2023 R:\Structures\Culverts\Culvert 6 - CobbCreek\DGN\Final\N-5861_SMU_CU_6-8_1900003.dgn

DRAWN BY : A. J. WOLCOTT DATE : JUL 2023
 CHECKED BY : R. V. KEITH DATE : JUL 2023
 DESIGN ENGINEER OF RECORD : R. V. KEITH DATE : JUL 2023