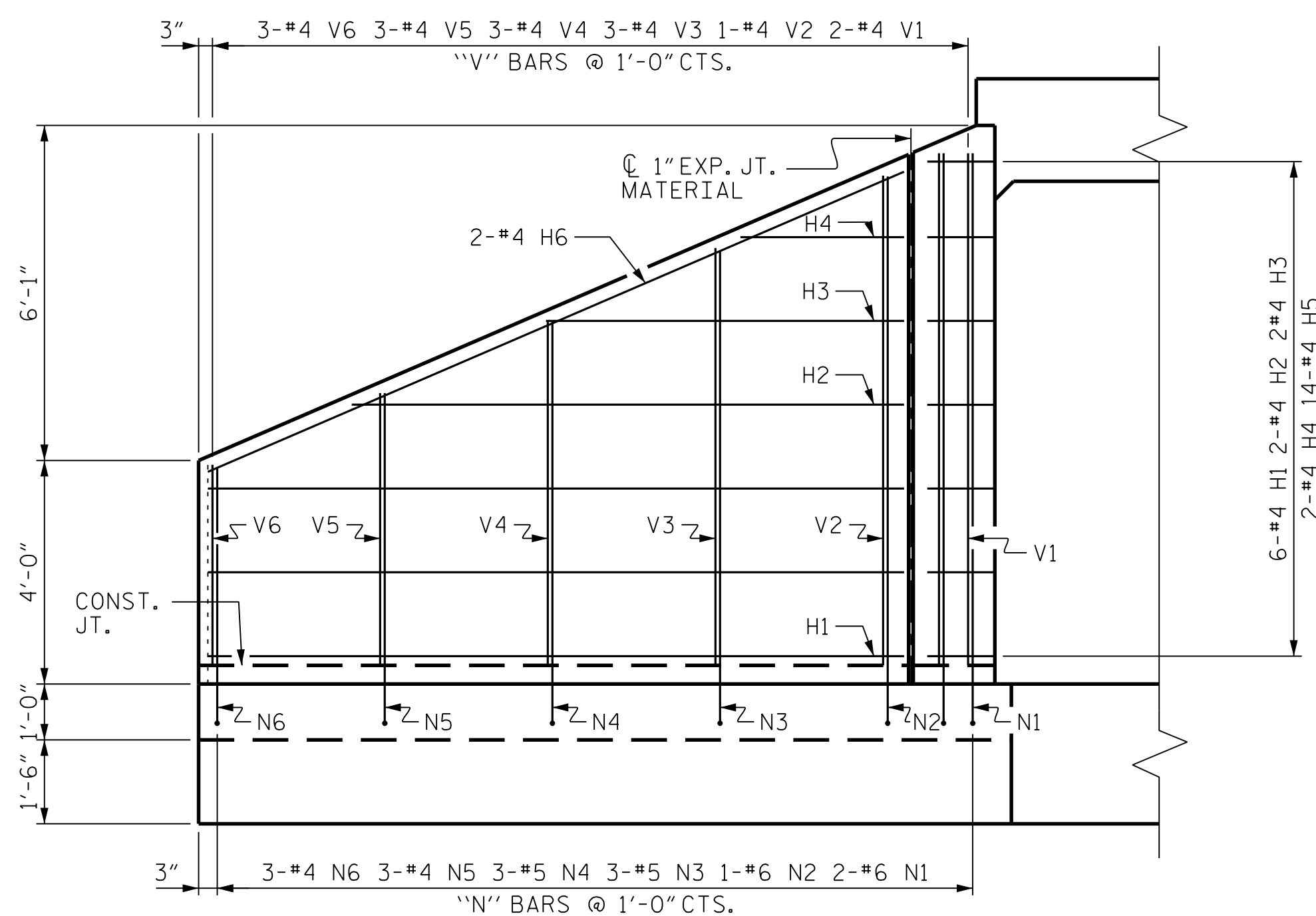
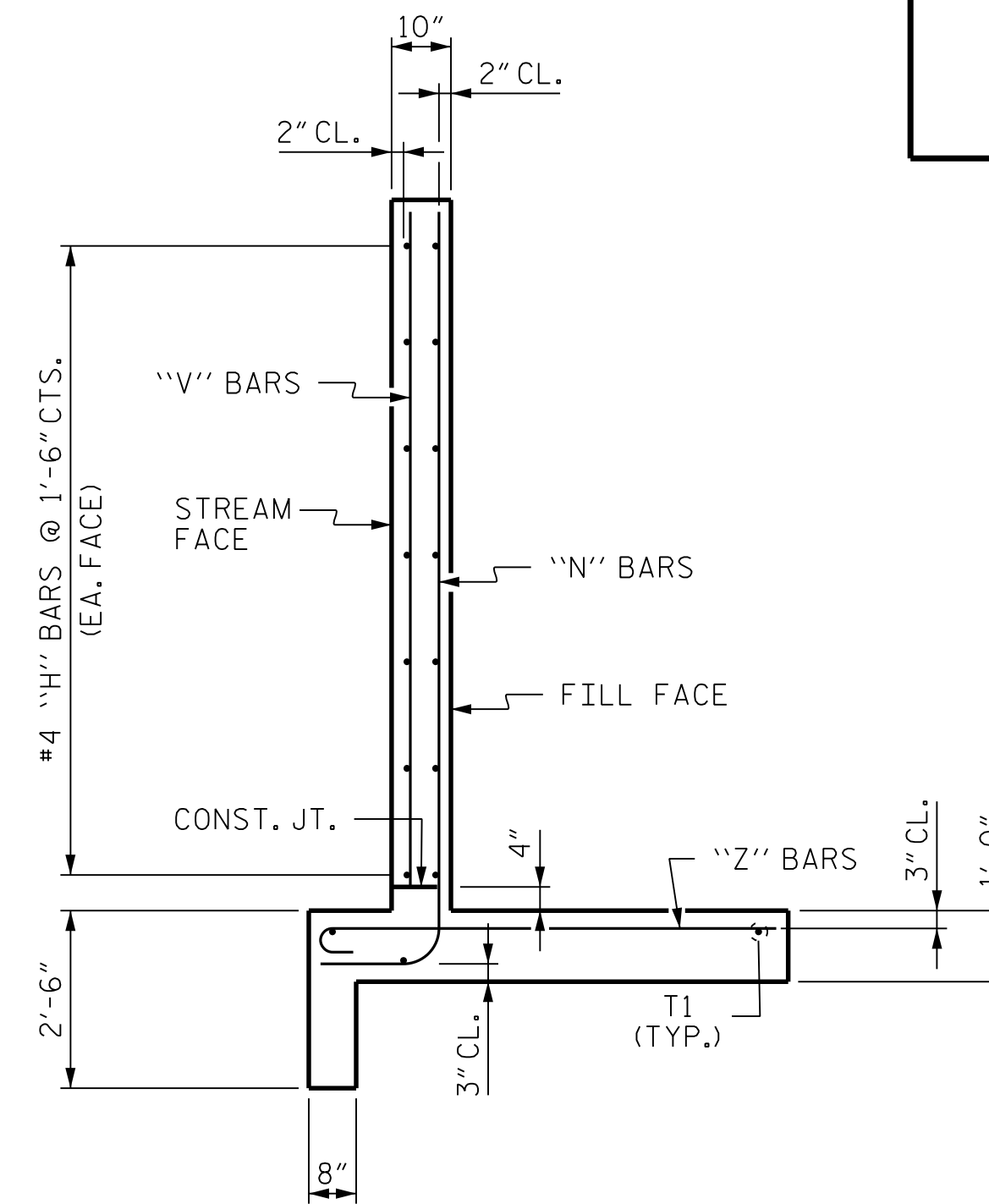


PLAN

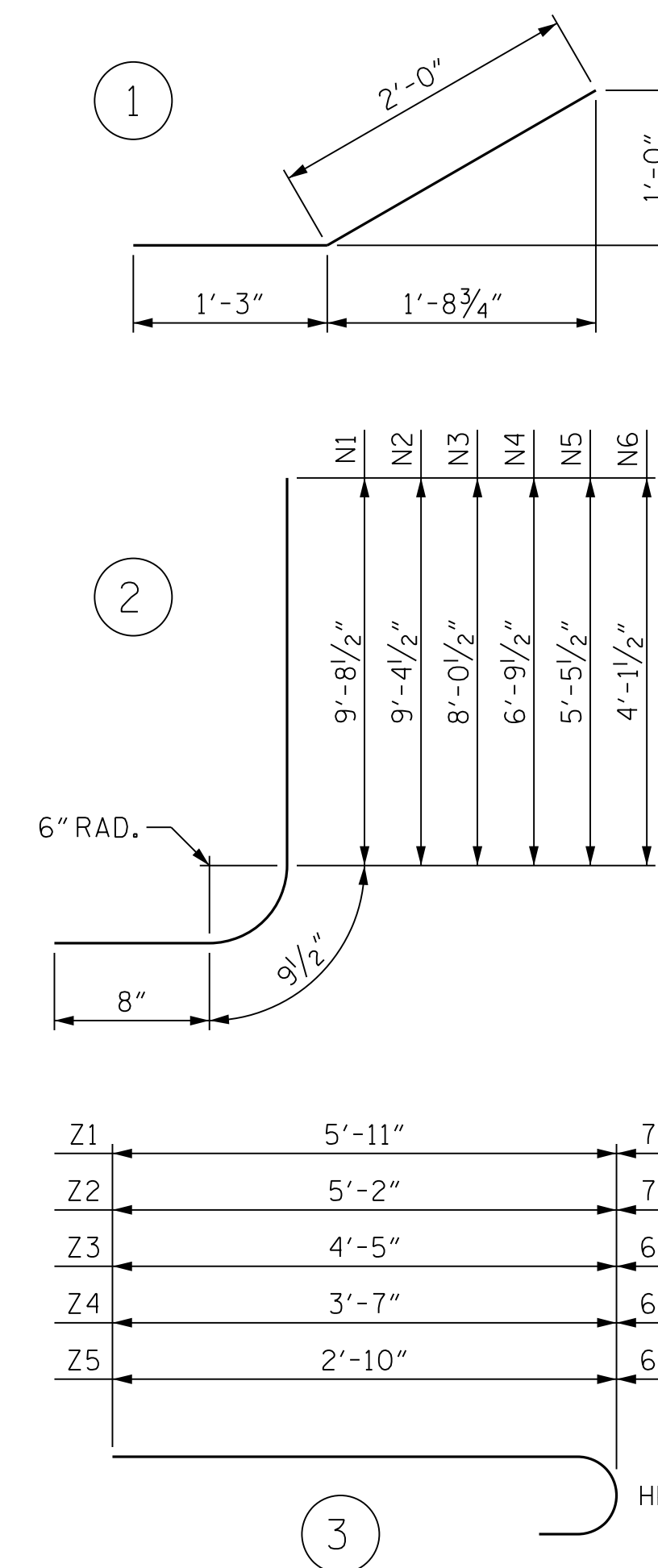


ELEVATION



TYPICAL WING SECTION

BAR TYPES



BILL OF MATERIAL

BAR	NO.	SIZE	TYPE	LENGTH	WEIGHT
H1	12	#4	STR.	12'-5"	100
H2	4	#4	STR.	9'-10"	26
H3	4	#4	STR.	6'-5"	17
H4	4	#4	STR.	2'-11"	8
H5	28	#4	1	3'-3"	61
H6	4	#4	STR.	13'-6"	36
N1	4	#6	2	11'-2"	67
N2	2	#6	2	10'-10"	33
N3	6	#5	2	9'-6"	59
N4	6	#5	2	8'-3"	52
N5	6	#4	2	6'-11"	28
N6	6	#4	2	5'-7"	22
S1	6	#6	STR.	6'-0"	54
T1	6	#5	STR.	14'-3"	89
V1	4	#4	STR.	9'-2"	24
V2	2	#4	STR.	8'-9"	12
V3	6	#4	STR.	7'-5"	30
V4	6	#4	STR.	6'-2"	25
V5	6	#4	STR.	4'-10"	19
V6	6	#4	STR.	3'-7"	14
Z1	6	#5	3	6'-6"	41
Z2	6	#5	3	5'-9"	36
Z3	6	#4	3	4'-11"	20
Z4	6	#4	3	4'-1"	16
Z5	6	#4	3	3'-4"	13

STAGE I CONSTRUCTION  
REINFORCING STEEL FOR 2 WINGS 902 LBS

CLASS A CONCRETE  
2 WINGS 13.1 C.Y.  
1 HEADWALLS 0.5 C.Y.  
1 END CURTAIN WALLS 1.4 C.Y.  
TOTAL 15.0 C.Y.

STAGE II CONSTRUCTION  
REINFORCING STEEL FOR 2 WINGS 902 LBS

CLASS A CONCRETE  
2 WINGS 13.1 C.Y.  
1 HEADWALLS 0.5 C.Y.  
1 END CURTAIN WALLS 1.4 C.Y.  
TOTAL 15.0 C.Y.

PROJECT NO. R-5861  
CHEROKEE COUNTY  
STATION: 127+65.00 -L-

SHEET 7 OF 8

STATE OF NORTH CAROLINA  
DEPARTMENT OF TRANSPORTATION  
RALEIGH

WINGS FOR

CONCRETE BOX CULVERT  
H= 9'-0" SLOPE = 2:1

CULVERT NO. 04



7/20/2023



Engineers | Construction Managers | Planners | Scientists  
www.rkk.com

Responsive People | Creative Solutions

DOCUMENT NOT CONSIDERED FINAL  
UNLESS ALL SIGNATURES COMPLETED

REVISIONS		SHEET NO.	
NO.	BY:	DATE:	NO.
1			3
2			4
			TOTAL SHEETS
			8

7/20/2023 R:\Structures\Culverts\Culvert 4 - GoldBranch.DGN\FinalR-5861\_SMU\_CU\_4-7\_190000.dgn

DRAWN BY : B. H. GONFA DATE : JUN 2023  
CHECKED BY : K. HAWKINS DATE : JUN 2023  
DESIGN ENGINEER OF RECORD : K. HAWKINS DATE : JUN 2023