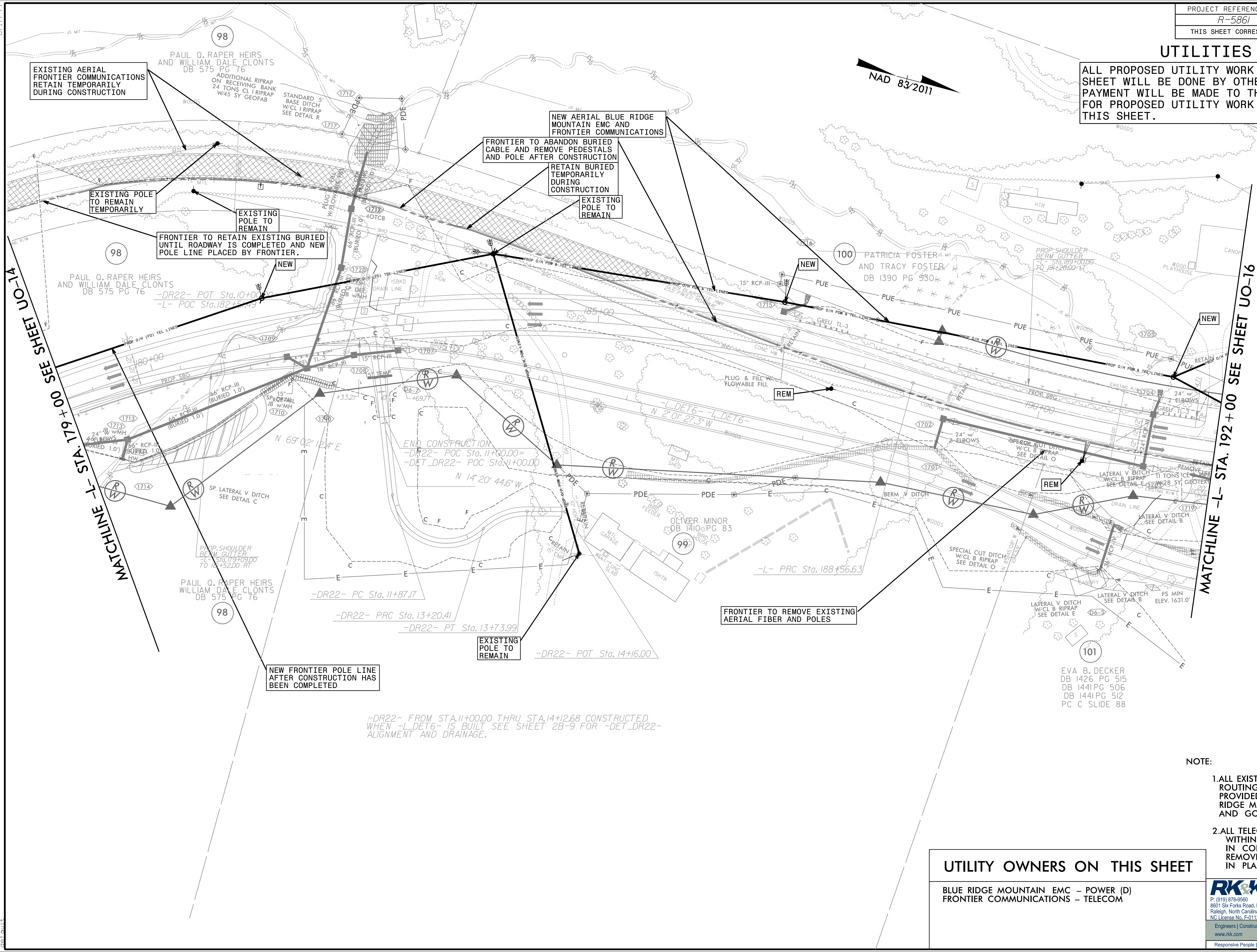


UTILITIES BY OTHERS

ALL PROPOSED UTILITY WORK SHOWN ON THIS SHEET WILL BE DONE BY OTHERS. NO PAYMENT WILL BE MADE TO THE CONTRACTOR FOR PROPOSED UTILITY WORK SHOWN ON THIS SHEET.



MATCHLINE -L- STA. 179+00 SEE SHEET UO-14

MATCHLINE -L- STA. 192+00 SEE SHEET UO-16

FRONTIER TO REMOVE EXISTING AERIAL FIBER AND POLES

EXISTING AERIAL FRONTIER COMMUNICATIONS RETAIN TEMPORARILY DURING CONSTRUCTION

FRONTIER TO ABANDON BURIED CABLE AND REMOVE PEDESTALS AND POLE AFTER CONSTRUCTION

RETAIN BURIED TEMPORARILY DURING CONSTRUCTION

EXISTING POLE TO REMAIN

EXISTING POLE TO REMAIN TEMPORARILY

EXISTING POLE TO REMAIN

FRONTIER TO RETAIN EXISTING BURIED UNTIL ROADWAY IS COMPLETED AND NEW POLE LINE PLACED BY FRONTIER.

NEW FRONTIER POLE LINE AFTER CONSTRUCTION HAS BEEN COMPLETED

-DR22- FROM STA.11+00.00 THRU STA.14+2.68 CONSTRUCTED WHEN -L-DET6- IS BUILT SEE SHEET 2B-9 FOR -DET_DR22- ALIGNMENT AND DRAINAGE.

UTILITY OWNERS ON THIS SHEET

BLUE RIDGE MOUNTAIN EMC - POWER (D)
FRONTIER COMMUNICATIONS - TELECOM

- NOTE:
1. ALL EXISTING POWER ROUTING/CONNECTIVITY PROVIDED BY; BLUE RIDGE MOUNTAIN EMC AND GOOGLE EARTH
 2. ALL TELECOMMUNICATIONS WITHIN THE PROJECT LIMITS IN CONFLICT WILL BE REMOVED OR ABANDONED IN PLACE



8/3/2023 8:34:44 AM C:\cloud\Projects\2015\15077_NCWest\SA\101_R5861\Design\Utilities\Engineering\UB0N\Proj\5861\U015.psh.vgdg