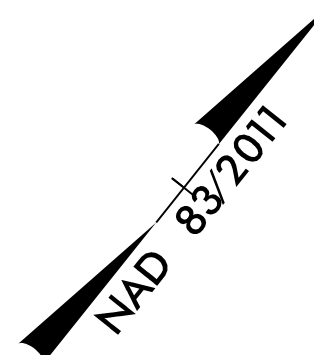


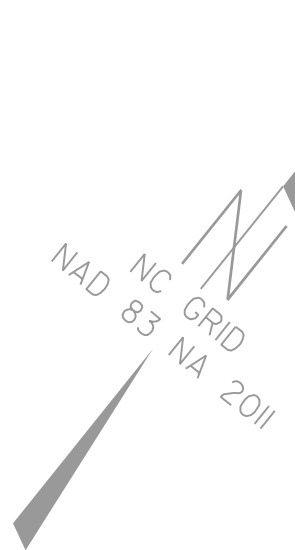
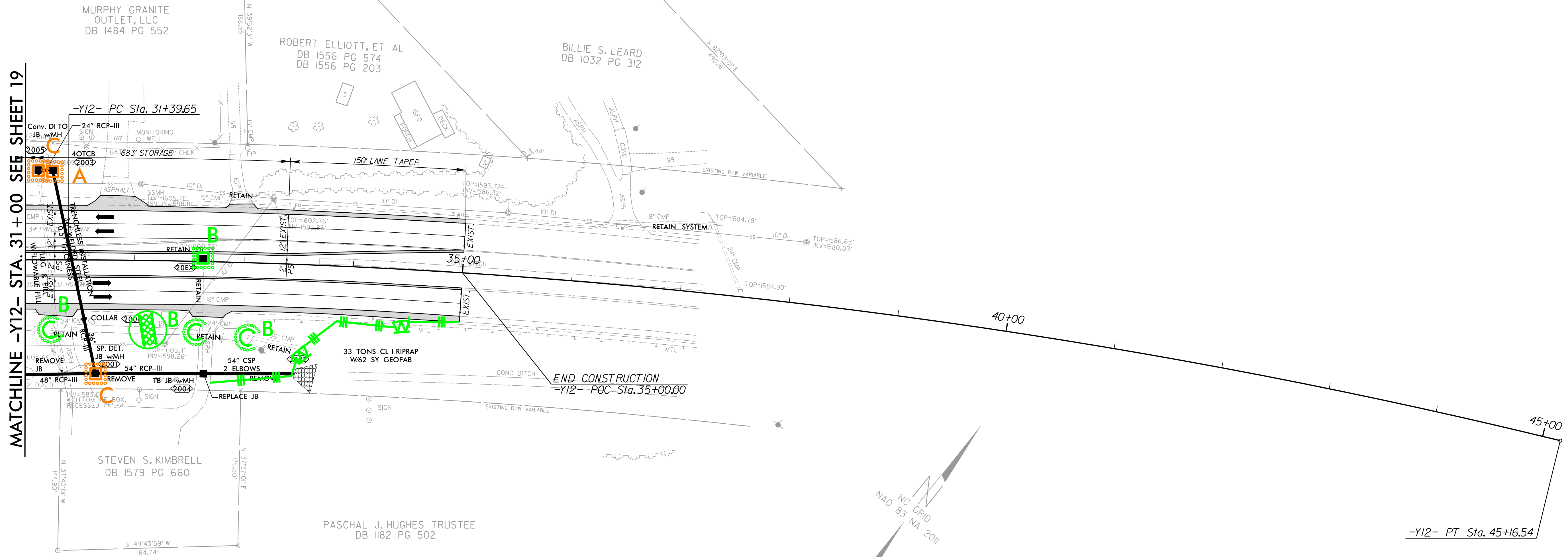
8/17/99

-Y12-
 PI Sta 38+31.35
 $\Delta = 13^{\circ} 36' 06.4" (RT)$
 $D = 0^{\circ} 59' 16.3"$
 $L = 1,376.90'$
 $T = 691.70'$
 $R = 5,800.00'$
 $DS = 60 \text{ MPH}$
 $SF = \text{EXIST.}$



PROJECT REFERENCE NO.	SHEET NO.
R-5861	EC-38/CONST.20
RW SHEET NO.	
ROADWAY DESIGN ENGINEER	HYDRAULICS ENGINEER

MATCHLINE -Y12- STA. 31+00 SEE SHEET 19



NOTES: ALL DRIVES ARE 16' WIDE WITH 10' RADII UNLESS OTHERWISE NOTED.
 NOTES: OVERLAY PAVED SHOULDERS -Y12- STA. 31+00.00 TO 35+00.00

-Y12- PT Sta. 45+16.54

10/23/2023
 R:\Projects\195861\EC\Const\195861_EC_psh38.dgn
 195861_EC_psh38.dgn



RK&K
 P: (919) 878-9560
 8601 Six Forks Road, Forum 1, Suite 700
 Raleigh, North Carolina 27615-3960
 NC License No. F-0112

Engineers | Construction Managers | Planners | Scientists
 www.rkk.com
 Responsive People | Creative Solutions

FOR -Y12- PROFILE SEE SHT. 33
 FOR DITCH DETAILS SEE SHT. 2D-1 & 2D-2