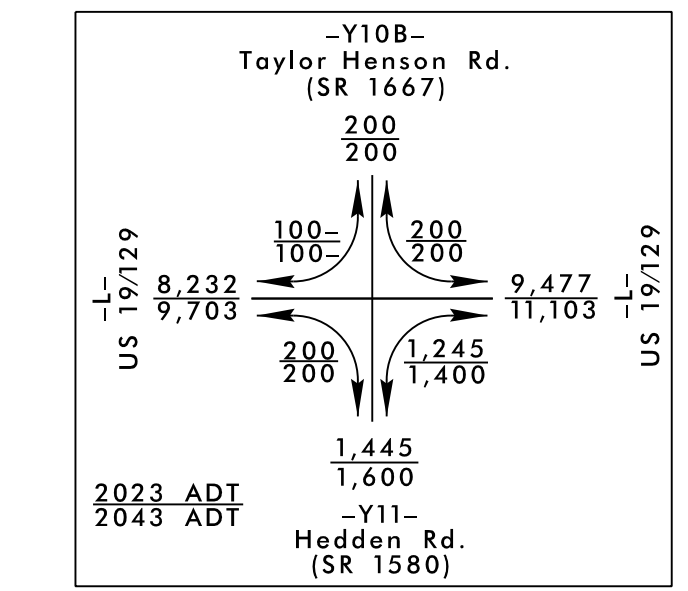
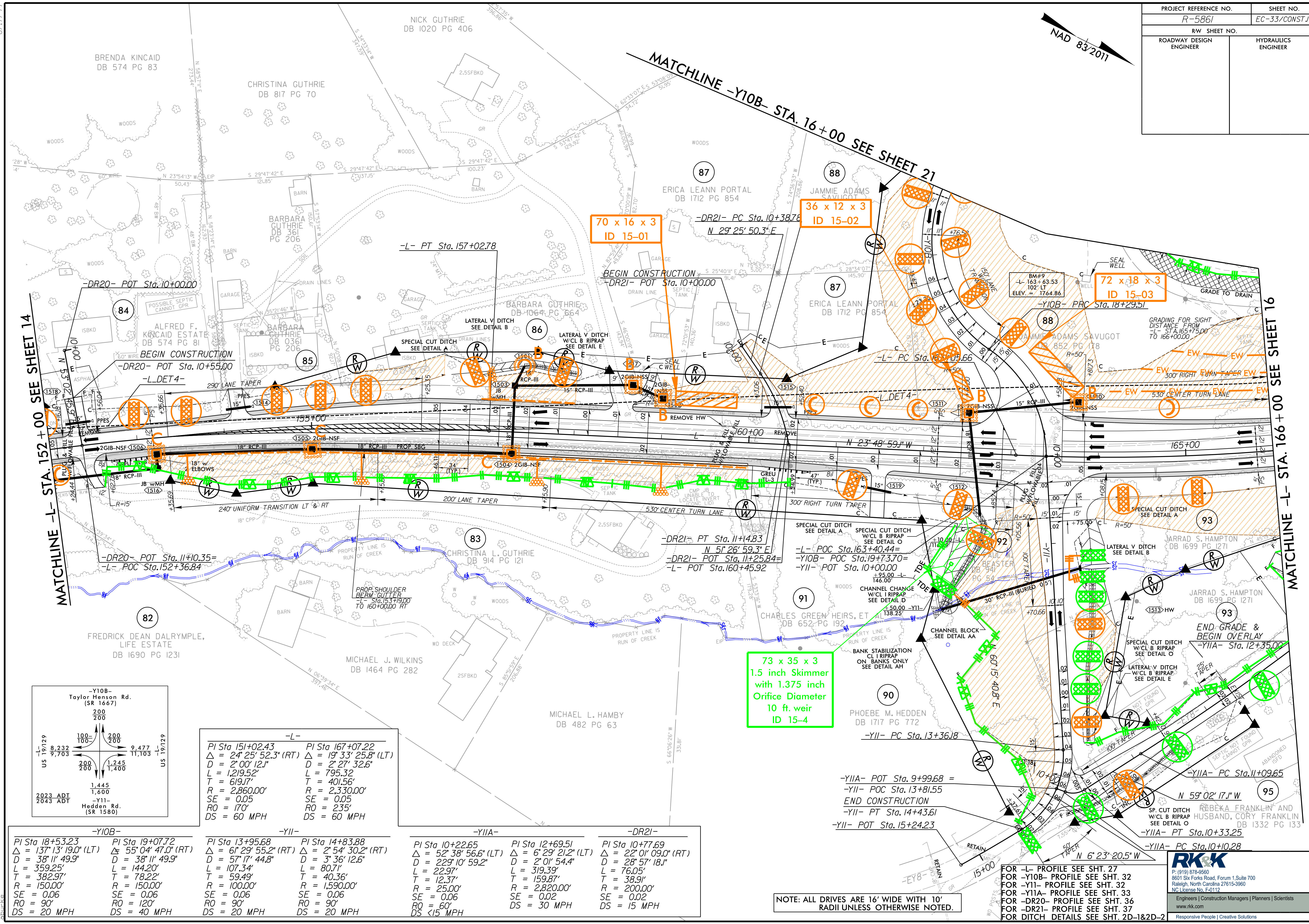


PROJECT REFERENCE NO. R-5861	SHEET NO. EC-33/CONST 15
RW SHEET NO.	
ROADWAY DESIGN ENGINEER	HYDRAULICS ENGINEER



PI Sta 151+02.43 Δ = 24° 25' 52.3" (RT) D = 2' 00' 12.1" L = 1,219.52' T = 619.17' R = 2,860.00' SE = 0.05 RO = 170' DS = 60 MPH	PI Sta 167+07.22 Δ = 19° 33' 25.8" (LT) D = 2' 27' 32.6" L = 795.32' T = 401.56' R = 2,330.00' SE = 0.05 RO = 235' DS = 60 MPH
--	--

-Y10B- PI Sta 18+53.23 Δ = 137° 13' 19.0" (LT) D = 38° 11' 49.9" L = 359.25' T = 382.97' R = 150.00' SE = 0.06 RO = 90' DS = 20 MPH	-Y11- PI Sta 19+07.72 Δ = 55° 04' 47.0" (RT) D = 38° 11' 49.9" L = 144.20' T = 78.22' R = 150.00' SE = 0.06 RO = 120' DS = 40 MPH	-Y11A- PI Sta 13+95.68 Δ = 61° 29' 55.2" (RT) D = 57° 17' 44.8" L = 107.34' T = 59.49' R = 100.00' SE = 0.06 RO = 90' DS = 20 MPH	-Y11B- PI Sta 14+83.88 Δ = 2° 54' 30.2" (RT) D = 3° 36' 12.6" L = 80.71' T = 40.36' R = 1,590.00' SE = 0.06 RO = 90' DS = 20 MPH	-DR21- PI Sta 10+22.65 Δ = 52° 38' 56.6" (LT) D = 22° 10' 59.2" L = 22.97' T = 12.37' R = 25.00' SE = 0.06 RO = 60' DS < 15 MPH	-Y11C- PI Sta 12+69.51 Δ = 6° 29' 21.2" (LT) D = 2° 01' 54.4" L = 319.39' T = 159.87' R = 2,820.00' SE = 0.02 DS = 30 MPH	-DR21- PI Sta 10+77.69 Δ = 22° 01' 09.0" (RT) D = 28° 57' 18.1" L = 76.05' T = 38.91' R = 200.00' SE = 0.02 DS = 15 MPH
---	---	---	--	---	--	--

NOTE: ALL DRIVES ARE 16' WIDE WITH 10' RADII UNLESS OTHERWISE NOTED.

FOR -L- PROFILE SEE SHT. 27
 FOR -Y10B- PROFILE SEE SHT. 32
 FOR -Y11- PROFILE SEE SHT. 32
 FOR -Y11A- PROFILE SEE SHT. 33
 FOR -DR20- PROFILE SEE SHT. 36
 FOR -DR21- PROFILE SEE SHT. 37
 FOR DITCH DETAILS SEE SHT. 2D-1&2D-2

8/17/2023 R:\Projects\18000\18000-001\18000-001.dwg