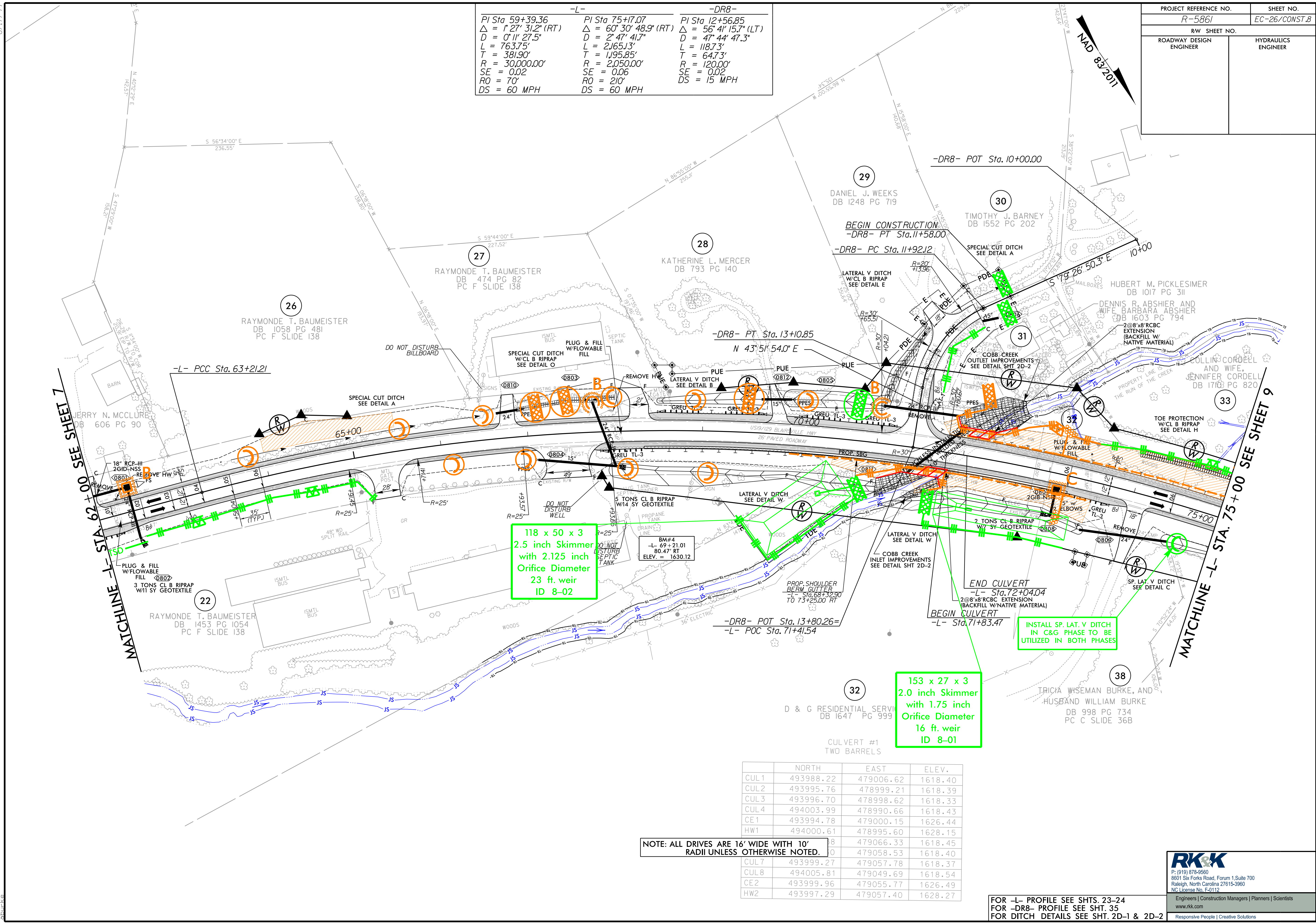


PROJECT REFERENCE NO.	SHEET NO.
R-5861	EC-26/CONST.B
RW SHEET NO.	
ROADWAY DESIGN ENGINEER	HYDRAULICS ENGINEER

-L-	-DR8-	-DR8-
PI Sta 59+39.36	PI Sta 75+17.07	PI Sta 12+56.85
$\Delta = 1^{\circ}27'31.2''$ (RT)	$\Delta = 60^{\circ}30'48.9''$ (RT)	$\Delta = 56^{\circ}41'15.7''$ (LT)
D = 0'11" 27.5"	D = 2' 47' 41.7"	D = 47' 44' 47.3"
L = 763.75'	L = 2,165.13'	L = 118.73'
T = 381.90'	T = 1,195.85'	T = 64.73'
R = 30,000.00'	R = 2,050.00'	R = 120.00'
SE = 0.02	SE = 0.06	SE = 0.02
RO = 70'	RO = 210'	DS = 15 MPH
DS = 60 MPH	DS = 60 MPH	



118 x 50 x 3
2.5 inch Skimmer
with 2.125 inch
Orifice Diameter
23 ft. weir
ID 8-02

153 x 27 x 3
2.0 inch Skimmer
with 1.75 inch
Orifice Diameter
16 ft. weir
ID 8-01

	NORTH	EAST	ELEV.
CUL1	493988.22	479006.62	1618.40
CUL2	493995.76	478999.21	1618.39
CUL3	493996.70	478998.62	1618.33
CUL4	494003.99	478990.66	1618.43
CE1	493994.78	479000.15	1626.44
HW1	494000.61	478995.60	1628.15
		479066.33	1618.45
		479058.53	1618.40
CUL7	493999.27	479057.78	1618.37
CUL8	494005.81	479049.69	1618.54
CE2	493999.96	479055.77	1626.49
HW2	493997.29	479057.40	1628.27

NOTE: ALL DRIVES ARE 16' WIDE WITH 10' RADII UNLESS OTHERWISE NOTED.

FOR -L- PROFILE SEE SHTS. 23-24
FOR -DR8- PROFILE SEE SHT. 35
FOR DITCH DETAILS SEE SHT. 2D-1 & 2D-2

RK&K
P: (919) 878-9560
8601 Six Forks Road, Forum 1, Suite 700
Raleigh, North Carolina 27615-3960
NC License No. F-0112

Engineers | Construction Managers | Planners | Scientists
www.rk&k.com
Responsive People | Creative Solutions

8/17/99
C:\Users\psh\OneDrive\Documents\Projects\5861\EC-26\CONST.B.dgn
10/23/2023
R:\Projects\5861\EC-26\CONST.B.dgn