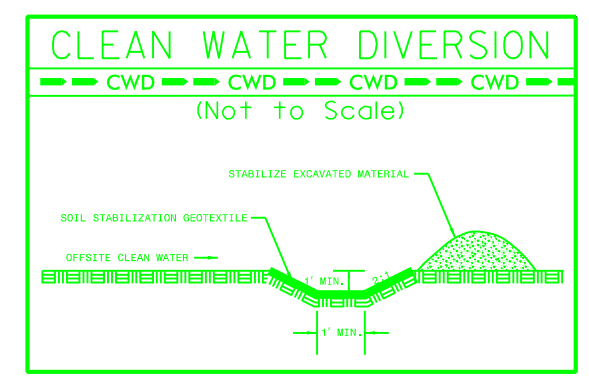


PROJECT REFERENCE NO.	SHEET NO.
R-5861	EC-22/CONST.4
RW SHEET NO.	
ROADWAY DESIGN ENGINEER	HYDRAULICS ENGINEER

-L-	-DRI-	-DR2-	
PI Sta 12+56.73	PI Sta 10+80.09	PI Sta 9+91.87	PI Sta 10+50.35
$\Delta = 24^{\circ} 05' 46.1" (LT)$	$\Delta = 6^{\circ} 06' 49.5" (LT)$	$\Delta = 13^{\circ} 05' 15.7" (LT)$	$\Delta = 28^{\circ} 53' 59.0" (RT)$
D = 6' 09" 39.0"	D = 7' 01" 48.6"	D = 21' 37" 15.8"	D = 52' 05" 13.5"
L = 391.12'	L = 86.96'	L = 60.53'	L = 55.48'
T = 198.49'	T = 43.52'	T = 30.40'	T = 28.35'
R = 930.00'	R = 815.00'	R = 265.00'	R = 110.00'
SE = 0.06	SE = 0.02	SE = 0.02	SE = 0.02
RO = 150'	DS = 15 MPH	DS = 15 MPH	DS = 15 MPH
DS = 50 MPH			



NAD 83/2011

**DO NOT INSTALL EROSION CONTROL DEVICES IN JURISDICTIONAL STREAMS/FLOW**

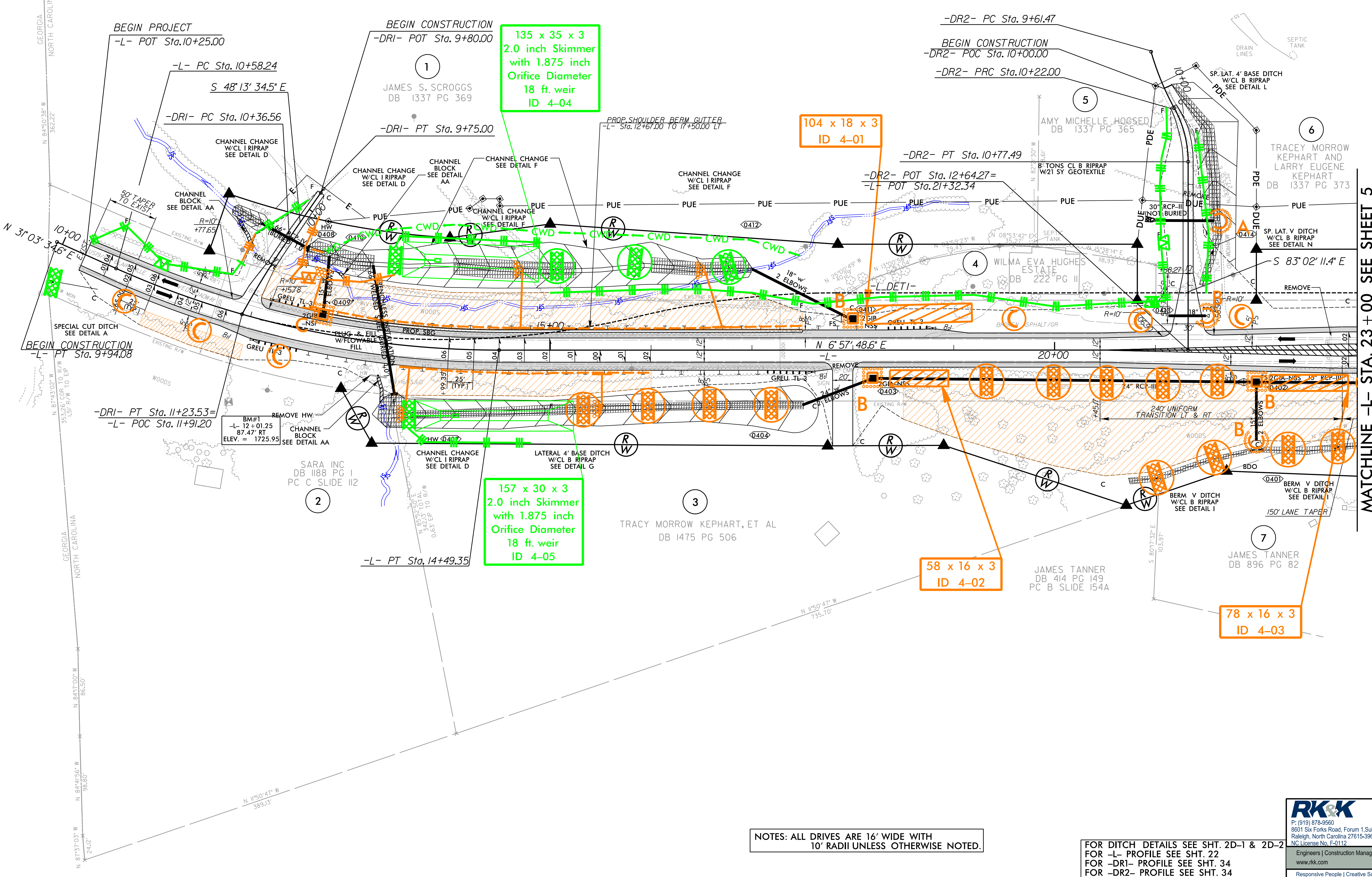
**135 x 35 x 3  
2.0 inch Skimmer  
with 1.875 inch  
Orifice Diameter  
18 ft. weir  
ID 4-04**

**104 x 18 x 3  
ID 4-01**

**157 x 30 x 3  
2.0 inch Skimmer  
with 1.875 inch  
Orifice Diameter  
18 ft. weir  
ID 4-05**

**58 x 16 x 3  
ID 4-02**

**78 x 16 x 3  
ID 4-03**



MATCHLINE -L- STA. 23+00 SEE SHEET 5

NOTES: ALL DRIVES ARE 16' WIDE WITH 10' RADII UNLESS OTHERWISE NOTED.

FOR DITCH DETAILS SEE SHT. 2D-1 & 2D-2  
FOR -L- PROFILE SEE SHT. 22  
FOR -DRI- PROFILE SEE SHT. 34  
FOR -DR2- PROFILE SEE SHT. 34

P: (919) 878-9560  
 8601 Six Forks Road, Forum 1, Suite 700  
 Raleigh, North Carolina 27615-3960  
 NC License No. F-0112  
 Engineers | Construction Managers | Planners | Scientists  
 www.rk&k.com  
 Responsive People | Creative Solutions

R:\18\2023\RA\Hydro\URS\CADD\PSH\Erosion\_Control\R5861\_EC\_psh22.dgn  
 8/17/2023  
 8/17/2023