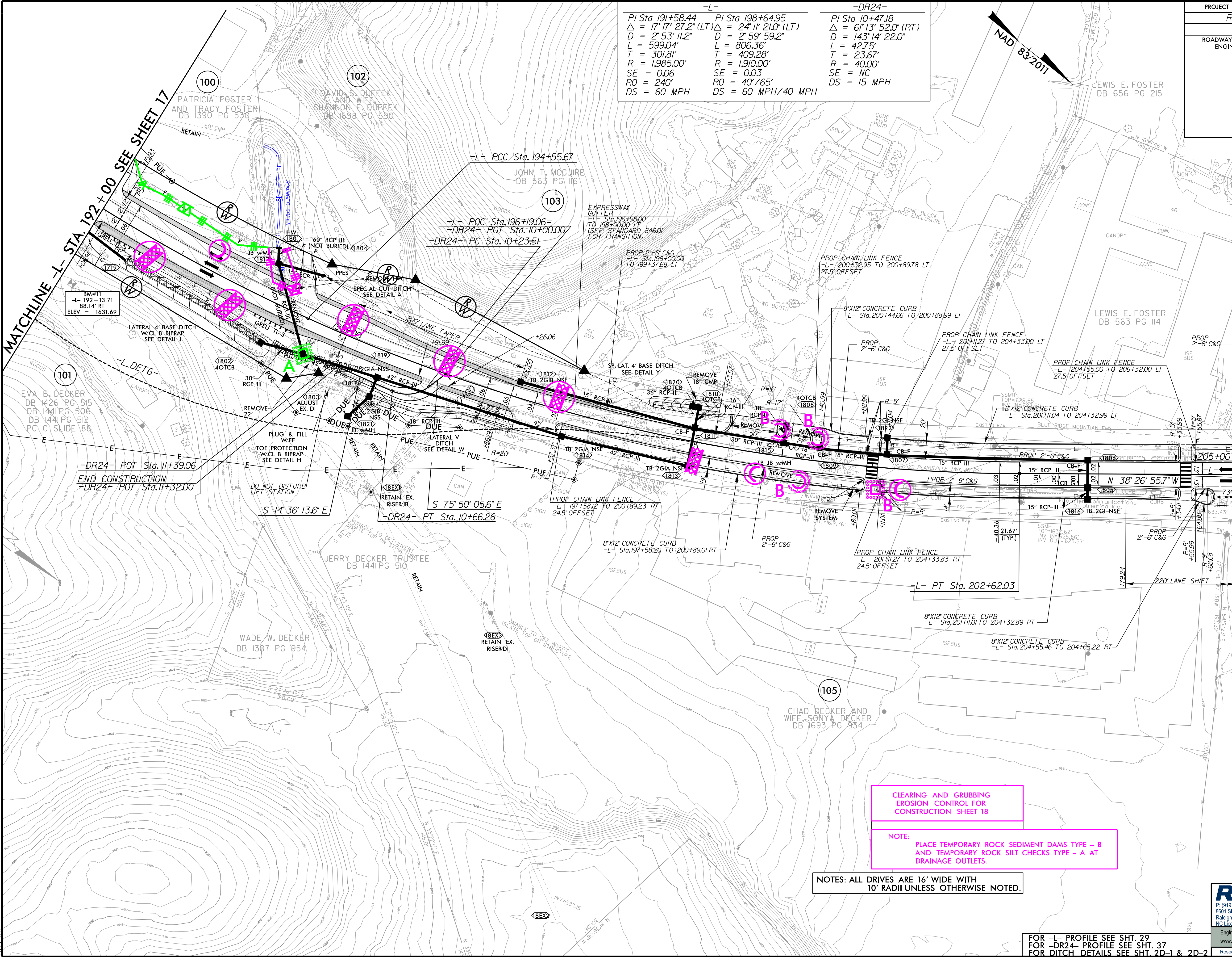


8/17/199

PROJECT REFERENCE NO.		SHEET NO.	
R-5861		EC-18/CONST 18	
RW SHEET NO.			
ROADWAY DESIGN ENGINEER		HYDRAULICS ENGINEER	

-L-			-DR24-		
PI Sta 191+58.44	PI Sta 198+64.95	PI Sta 10+47.18	$\Delta = 17' 17" 27.2"$ (LT)	$\Delta = 24' 11" 21.0"$ (LT)	$\Delta = 6' 13' 52.0"$ (RT)
D = 2' 53' 11.2"	D = 2' 59' 59.2"	D = 143' 14' 22.0"	L = 599.04'	L = 806.36'	L = 42.75'
T = 301.81'	T = 409.28'	T = 23.67'	R = 1,985.00'	R = 1,910.00'	R = 40.00'
SE = 0.06	SE = 0.03	SE = NC	RO = 240'	RO = 40'/65'	DS = 15 MPH
DS = 60 MPH	DS = 60 MPH/40 MPH				



CLEARING AND GRUBBING  
EROSION CONTROL FOR  
CONSTRUCTION SHEET 18

NOTE:  
PLACE TEMPORARY ROCK SEDIMENT DAMS TYPE - B  
AND TEMPORARY ROCK SILT CHECKS TYPE - A AT  
DRAINAGE OUTLETS.

NOTES: ALL DRIVES ARE 16' WIDE WITH  
10' RADII UNLESS OTHERWISE NOTED.

FOR -L- PROFILE SEE SHT. 29  
FOR -DR24- PROFILE SEE SHT. 37  
FOR DITCH DETAILS SEE SHT. 2D-1 & 2D-2

**RK&K**  
P: (919) 978-9560  
8601 Six Forks Road, Forum 1, Suite 700  
Raleigh, North Carolina 27615-3960  
NC License No. F-0112  
Engineers | Construction Managers | Planners | Scientists  
www.rk.com  
Responsive People | Creative Solutions

9/18/2023 R:\Hydraulics\CADD\PSH\Erosion Control\185861\_EC\_psh18.dgn