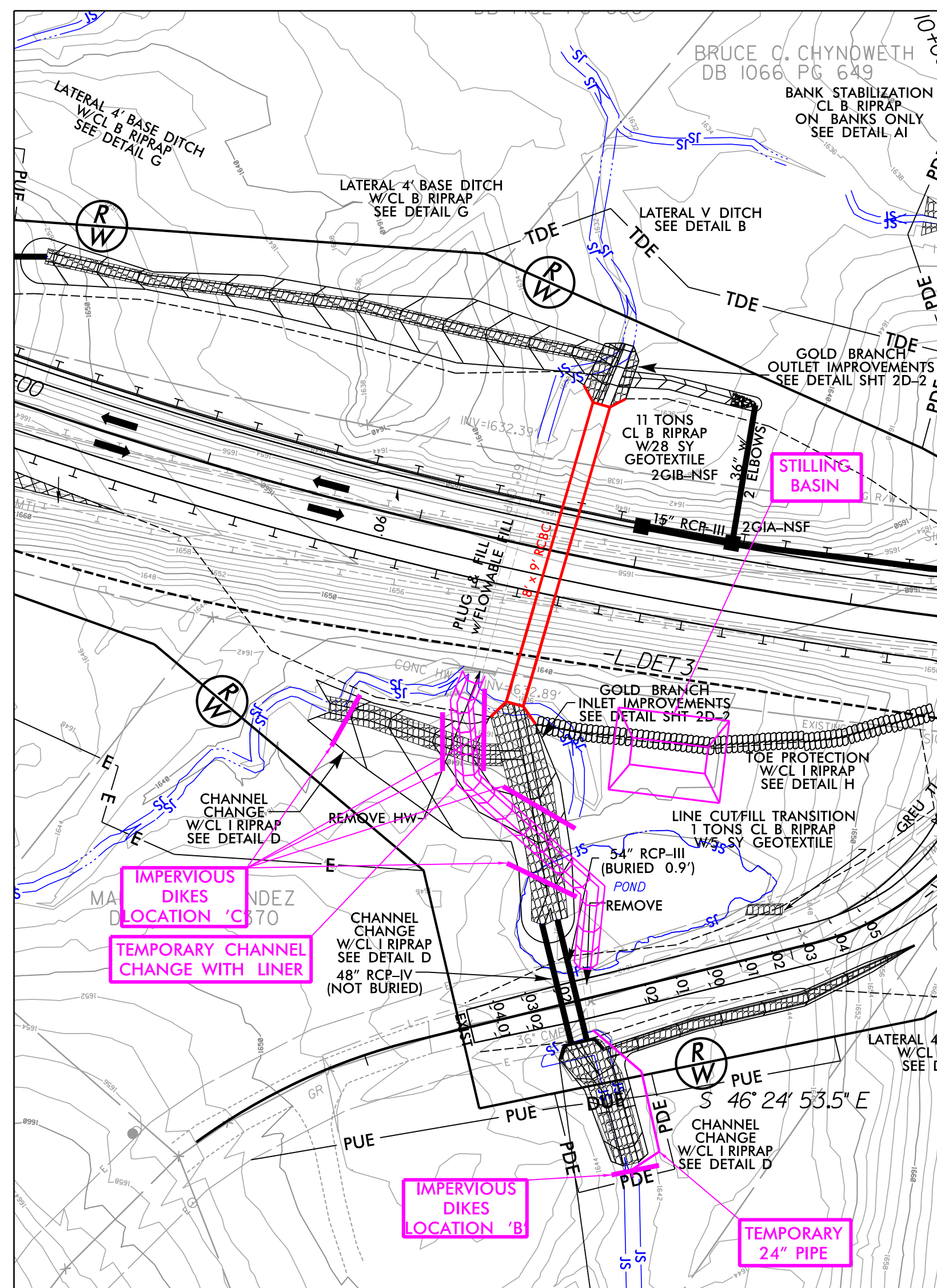


PROJECT REFERENCE NO. R-5861	SHEET NO. EC-13B/CONST13B
RW SHEET NO.	
ROADWAY DESIGN ENGINEER	HYDRAULICS ENGINEER

8/17/99

8/18/2023
R:\Projects\Public\CA\DD\PSH\ER\oson_Contr\1\RB861.EC_psh13B.dgn



CULVERT INSTALLATION SEQUENCE 2 STA. 127+65 -L-

1. MAINTAIN TEMPORARY CHANNEL CHANGE AND IMPERVIOUS DIKES FROM SEQUENCE 1.
2. INSTALL STILLING BASIN AT INLET END WITH A MINIMUM CAPACITY OF 67 CY.
3. INSTALL 24" TEMPORARY PIPE AND USE TRANSITION FITTING TO CONNECT TO EXISTING 36" PIPE UNDER -Y9-.
4. INSTALL IMPERVIOUS DIKE IN LOCATION 'B.'
5. DRAIN POND ACCORDING TO SPECIAL PROVISIONS AND CONSTRUCT TEMPORARY CHANNEL CHANGE W/LINER AS SHOWN IN DETAIL BELOW.
6. INSTALL IMPERVIOUS DIKES IN LOCATION 'C.'
7. DIVERT STREAM THROUGH TEMPORARY PIPE AND CHANNEL CHANGE.
8. CONSTRUCT 57 LF (2)-48" PIPES, STANDARD BASE DITCH AS PER DETAIL T, PROPOSED 8'x9' RCBC WITH HEADWALL, WINGWALLS, INLET CHANNEL IMPROVEMENTS, 100 LF STANDARD BASE DITCH W/RIP RAP AS PER DETAIL T AND 90 LF CHANNEL CHANGE W/RIP RAP AS PER DETAIL D.
9. UTILIZE PUMP AROUND OPERATIONS TO COMPLETE CONSTRUCTION OF STANDARD BASE DITCH, DETAIL T.
10. UTILIZE PUMP AROUND OPERATIONS TO COMPLETE CONSTRUCTION OF CHANNEL CHANGE, DETAIL D, AND TIE TO EXISTING STREAM.
11. REMOVE IMPERVIOUS DIKES AT LOCATIONS 'A', 'B' AND 'C'. REMOVE STILLING BASIN AND TEMPORARY CHANNEL CHANGES.
12. DIVERT STREAM THROUGH NEWLY CONSTRUCTED BASE DITCHES AND CULVERT.
13. CONSTRUCT PROPOSED ROADWAY AND EMBANKMENTS ACCORDING TO ROADWAYS PLANS.

