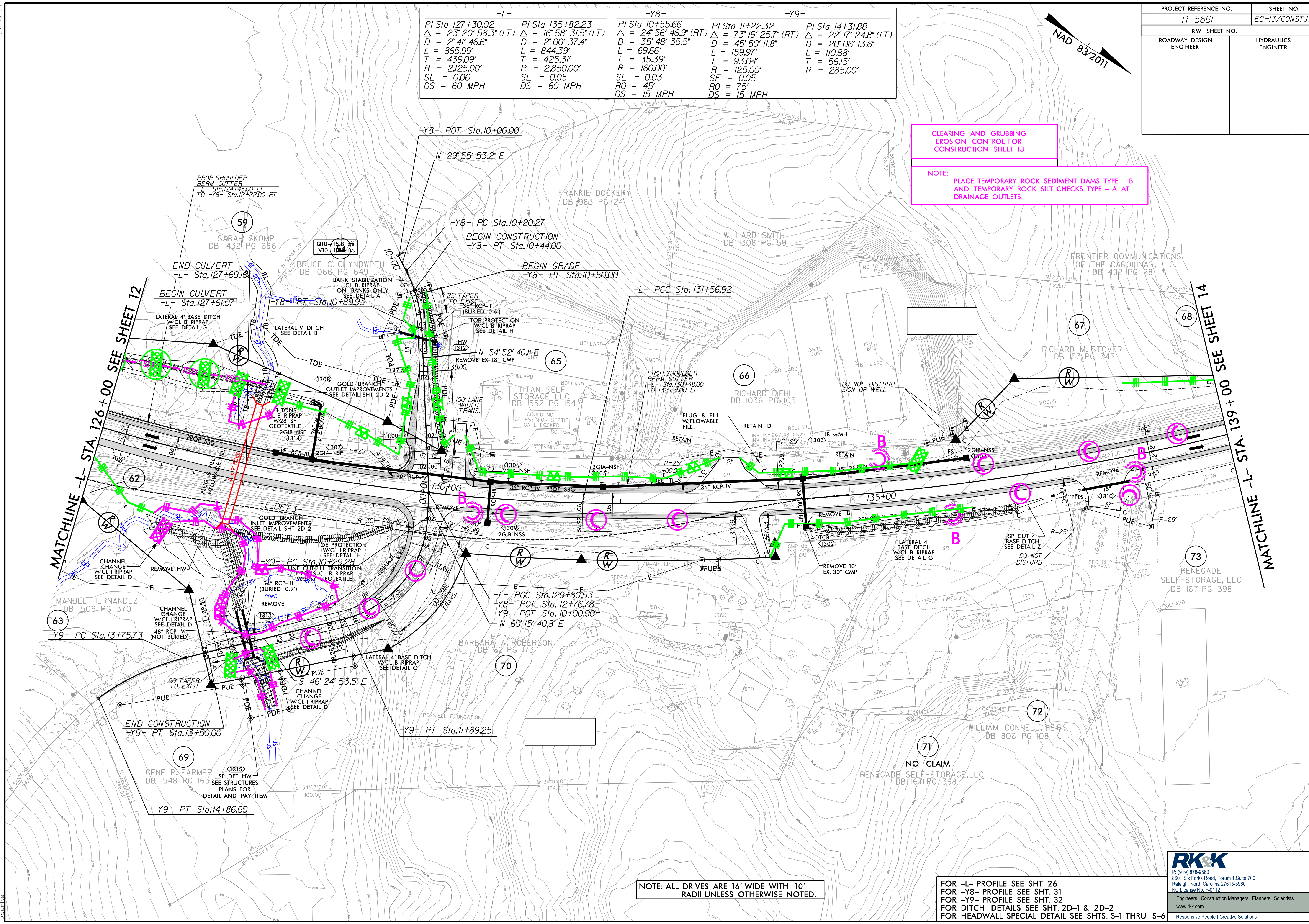


PROJECT REFERENCE NO.	SHEET NO.
R-5861	EC-13/CONST.13
RW SHEET NO.	
ROADWAY DESIGN ENGINEER	HYDRAULICS ENGINEER

-L-	-Y8-	-Y9-
PI Sta 127+30.02 Δ = 23° 20' 58.3" (LT) D = 2' 4" 46.6" L = 865.99' T = 439.09' R = 2,125.00' SE = 0.06 DS = 60 MPH	PI Sta 135+82.23 Δ = 16° 58' 31.5" (LT) D = 2' 00" 37.4" L = 844.39' T = 425.31' R = 2,850.00' SE = 0.05 DS = 60 MPH	PI Sta 10+55.66 Δ = 24° 56' 46.9" (RT) D = 35' 48" 35.5" L = 69.66' T = 35.39' R = 160.00' SE = 0.03 RO = 45' DS = 15 MPH
PI Sta 11+22.32 Δ = 73° 19' 25.7" (RT) D = 45' 50" 11.8" L = 159.97' T = 93.04' R = 125.00' SE = 0.05 RO = 75' DS = 15 MPH	PI Sta 14+31.88 Δ = 22° 17' 24.8" (LT) D = 20' 06" 13.6" L = 110.88' T = 56.15' R = 285.00'	



CLEARING AND GRUBBING  
EROSION CONTROL FOR  
CONSTRUCTION SHEET 13

NOTE:  
PLACE TEMPORARY ROCK SEDIMENT DAMS TYPE - B  
AND TEMPORARY ROCK SILT CHECKS TYPE - A AT  
DRAINAGE OUTLETS.

NOTE: ALL DRIVES ARE 16' WIDE WITH 10'  
RADIUS UNLESS OTHERWISE NOTED.

FOR -L- PROFILE SEE SHT. 26  
FOR -Y8- PROFILE SEE SHT. 31  
FOR -Y9- PROFILE SEE SHT. 32  
FOR DITCH DETAILS SEE SHTS. 2D-1 & 2D-2  
FOR HEADWALL SPECIAL DETAIL SEE SHTS. S-1 THRU S-6

**RK&K**  
P: (919) 878-9560  
8601 Six Forks Road, Forum 1, Suite 700  
Raleigh, North Carolina 27615-3960  
NC License No. F-0112  
Engineers | Construction Managers | Planners | Scientists  
www.rk&k.com  
Responsive People | Creative Solutions

8/17/2023 R:\Projects\13\EC-13\Const\13\EC-13.dgn