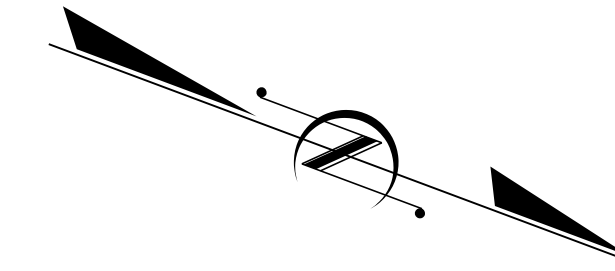
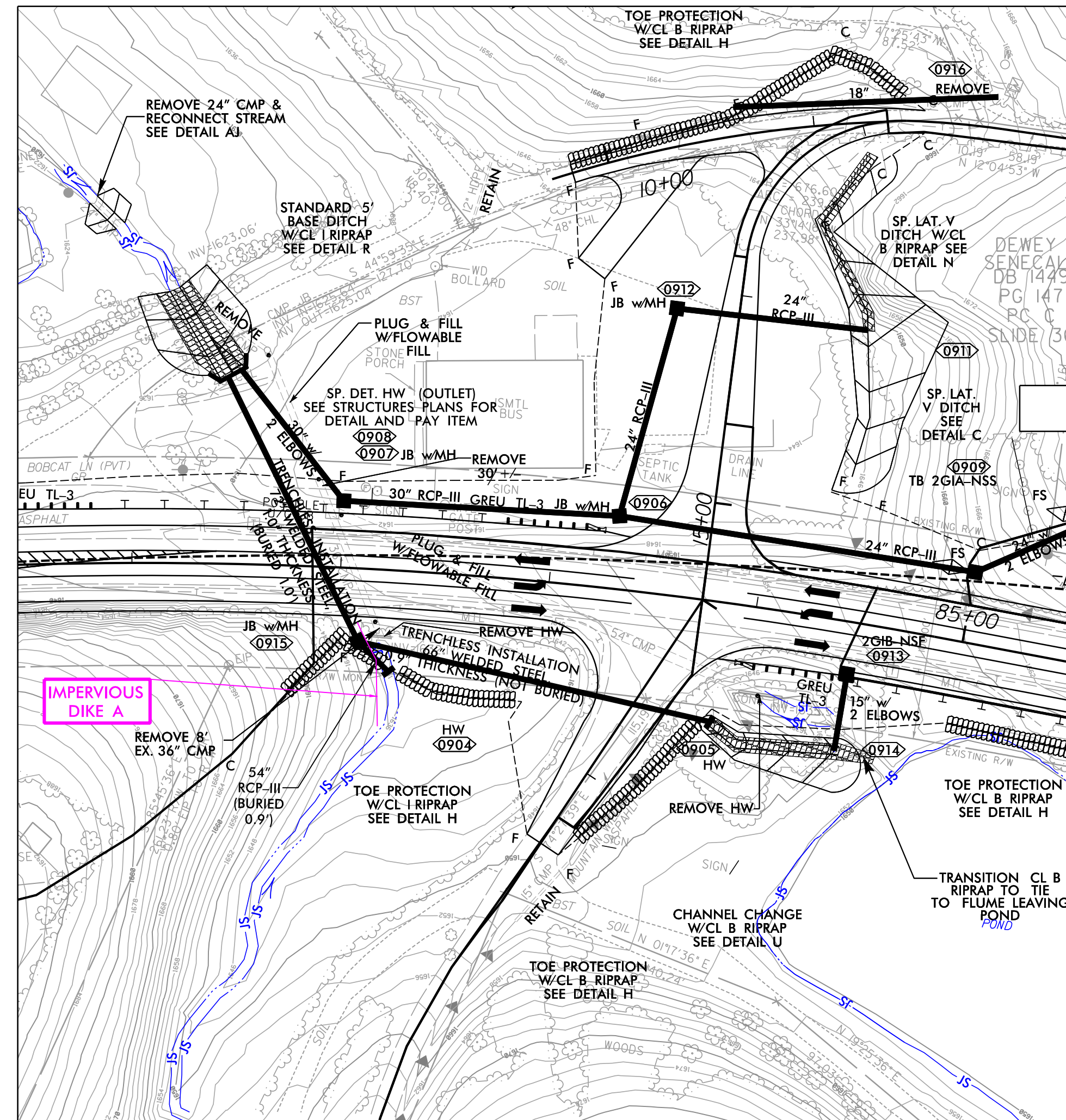


PROJECT REFERENCE NO. R-5861	SHEET NO. EC-9A/CONST.9A
RW SHEET NO.	
ROADWAY DESIGN ENGINEER	HYDRAULICS ENGINEER



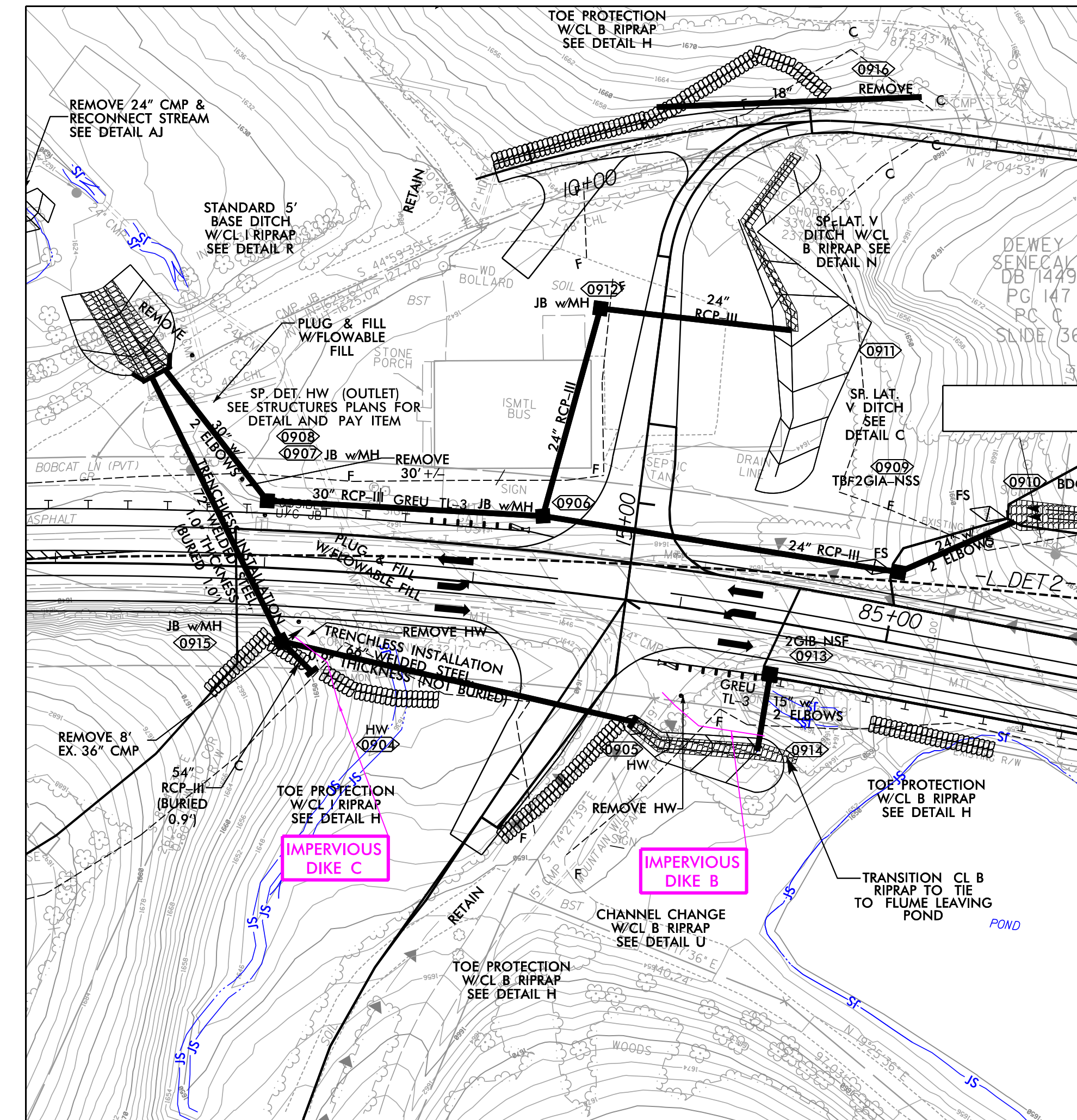
PIPE INSTALLATION SEQUENCE 1 STA. 81+96 -L-

1. INSTALL SPECIAL STILLING BASIN(S) AS NEEDED.
2. INSTALL IMPERVIOUS DIKE 'A' AS SHOWN ON PLANS TO MAINTAIN FLOW THROUGH THE EXISTING 36" CMP AND INSTALL SPECIAL STILLING BASIN(S) AS NEEDED.
3. INSTALL ENTRANCE AND RECEIVING BORE PITS AS NECESSARY.
4. INSTALL TRENCHLESS INSTALLATION 72" WELDED STEEL PIPE UNDER -L-.
5. INSTALL JUNCTION BOX W/MANHOLE, STRUCTURE NO. 0915.
6. INSTALL OUTLET CHANNEL IMPROVEMENTS (DETAIL R), UTILIZING PUMP AROUND OPERATIONS AS NECESSARY TO REMOVE EX. 24" CMP AND BUILD STD. DITCH.
7. UTILIZE PUMP AROUND OPERATIONS AS NECESSARY TO INSTALL HEADWALL & 54" RCP-III ENTRANCE. SEE EC-2C.
8. REMOVE IMPERVIOUS DIKE 'A' AND DIVERT WATER INTO NEWLY CONSTRUCTED 72" PIPE.



PIPE INSTALLATION SEQUENCE 2 STA. 10+57 -Y5-

1. INSTALL IMPERVIOUS DIKE 'B' AND 'C' AS SHOWN ON PLANS TO MAINTAIN FLOW THROUGH THE EXISTING 54" CMP HW & 24" CMP OUTLET
2. INSTALL ENTRANCE AND RECEIVING BORE PITS AS NECESSARY.
3. INSTALL TRENCHLESS INSTALLATION 66" WELDED STEEL PIPE UNDER -Y5-
4. UTILIZE PUMP AROUND OPERATIONS TO CONSTRUCT LAST FEW FT OF 66" WSP INTO PREVIOUSLY CONSTRUCTED JB W/MH #0915. SEE EC-2C.
5. REMOVE IMPERVIOUS DIKES AND DIVERT WATER THROUGH NEWLY CONSTRUCTED PIPES. REMOVE SPECIAL STILLING BASIN(S).
6. PLUG & FILL /REMOVE NECESSARY EXISTING PIPES PER PLANS.



8/17/99
 8/18/2023
 P:\Projects\2023\Public\PSH\ERoston_Contr01\R5861.EC_psh09A.dgn