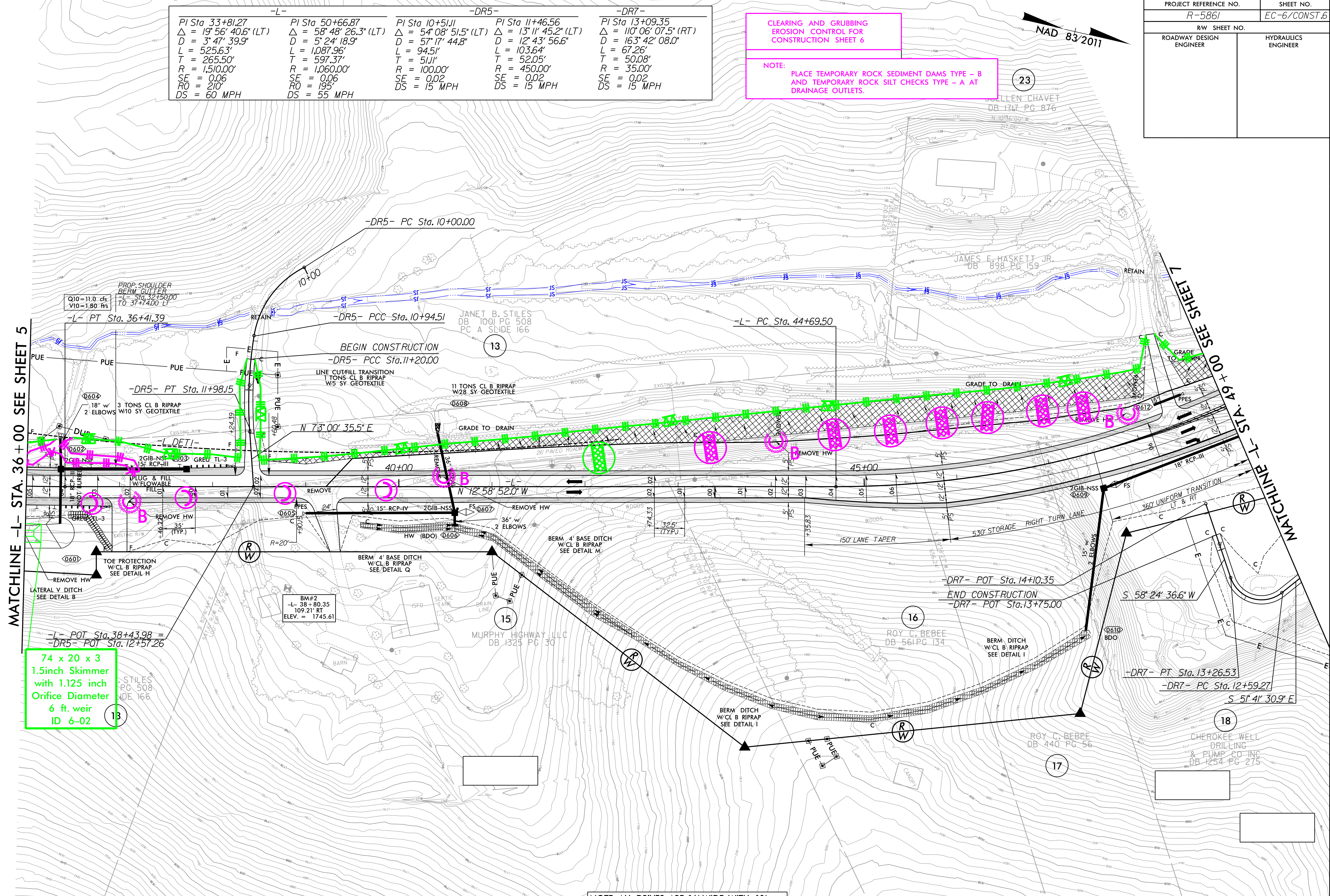


PROJECT REFERENCE NO. R-5861	SHEET NO. EC-6/CONST.6
RW SHEET NO.	
ROADWAY DESIGN ENGINEER	HYDRAULICS ENGINEER

-L-		-DR5-		-DR7-	
PI Sta. 33+81.27	PI Sta. 50+66.87	PI Sta. 10+51.11	PI Sta. 11+46.56	PI Sta. 13+09.35	
$\Delta = 19^{\circ} 56' 40.6" (LT)$	$\Delta = 58^{\circ} 48' 26.3" (LT)$	$\Delta = 54^{\circ} 08' 51.5" (LT)$	$\Delta = 13^{\circ} 11' 45.2" (LT)$	$\Delta = 110^{\circ} 06' 07.5" (RT)$	
D = 3' 47' 39.9"	D = 5' 24' 18.9"	D = 57' 17' 44.8"	D = 12' 43' 56.6"	D = 163' 42' 08.0"	
L = 525.63'	L = 1,087.96'	L = 94.51'	L = 103.64'	L = 67.26'	
T = 265.50'	T = 597.37'	T = 51.11'	T = 52.05'	T = 50.08'	
R = 1,510.00'	R = 1,060.00'	R = 100.00'	R = 450.00'	R = 35.00'	
SE = 0.06	SE = 0.06	SE = 0.02	SE = 0.02	SE = 0.02	
RO = 210'	RO = 195'	DS = 15 MPH	DS = 15 MPH	DS = 15 MPH	
DS = 60 MPH	DS = 55 MPH				

CLEARING AND GRUBBING
EROSION CONTROL FOR
CONSTRUCTION SHEET 6

NOTE:
PLACE TEMPORARY ROCK SEDIMENT DAMS TYPE - B
AND TEMPORARY ROCK SILT CHECKS TYPE - A AT
DRAINAGE OUTLETS.



MATCHLINE -L- STA. 36+00 SEE SHEET 5

MATCHLINE -L- STA. 49+00 SEE SHEET 6

74 x 20 x 3
1.5inch Skimmer
with 1.125 inch
Orifice Diameter
6 ft. weir
ID 6-02

NOTE: ALL DRIVES ARE 16' WIDE WITH 10' RADII UNLESS OTHERWISE NOTED.

FOR -L- PROFILE SEE SHT. 23
FOR -DR5- PROFILE SEE SHT. 34
FOR -DR7- PROFILE SEE SHT. 35
FOR DITCH DETAILS SEE SHT. 2D-1 & 2D-2

RK&K
P: (919) 878-9560
8601 Six Forks Road, Forum 1, Suite 700
Raleigh, North Carolina 27615-3960
NC License No. F-0112

Engineers | Construction Managers | Planners | Scientists
www.rk&k.com
Responsive People | Creative Solutions

8/17/99
R:\Highways\Irrigation\CAAD\PSH\Erosion_Control\R5861_EC_psh06.dgn