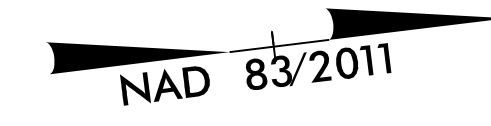


-L_DET1-

PROJECT REFERENCE NO. R-5861	SHEET NO. EC12B-12/CONST.2B-2
RW SHEET NO.	
ROADWAY DESIGN ENGINEER	HYDRAULICS ENGINEER

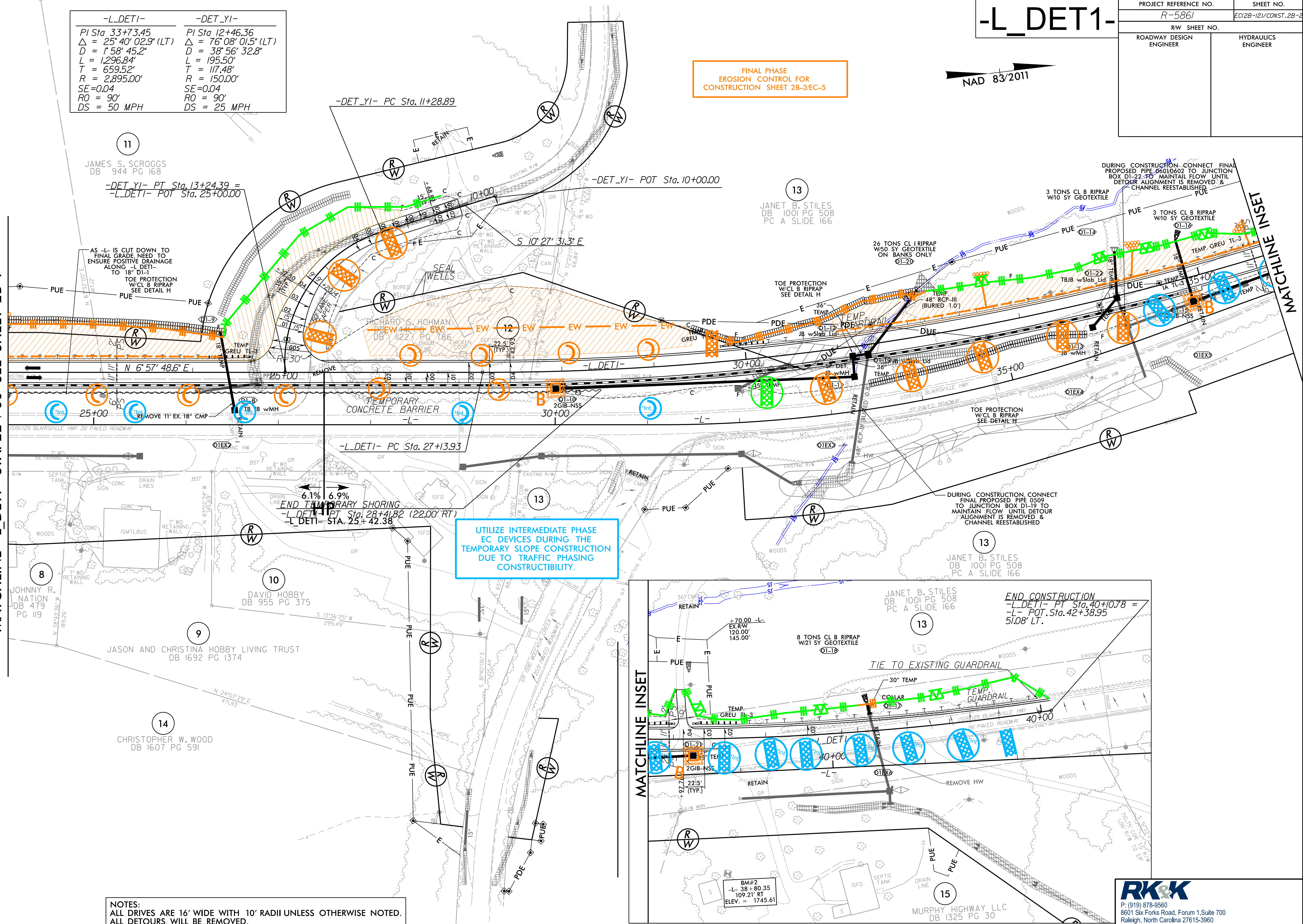


FINAL PHASE
EROSION CONTROL FOR
CONSTRUCTION SHEET 2B-2EC-5

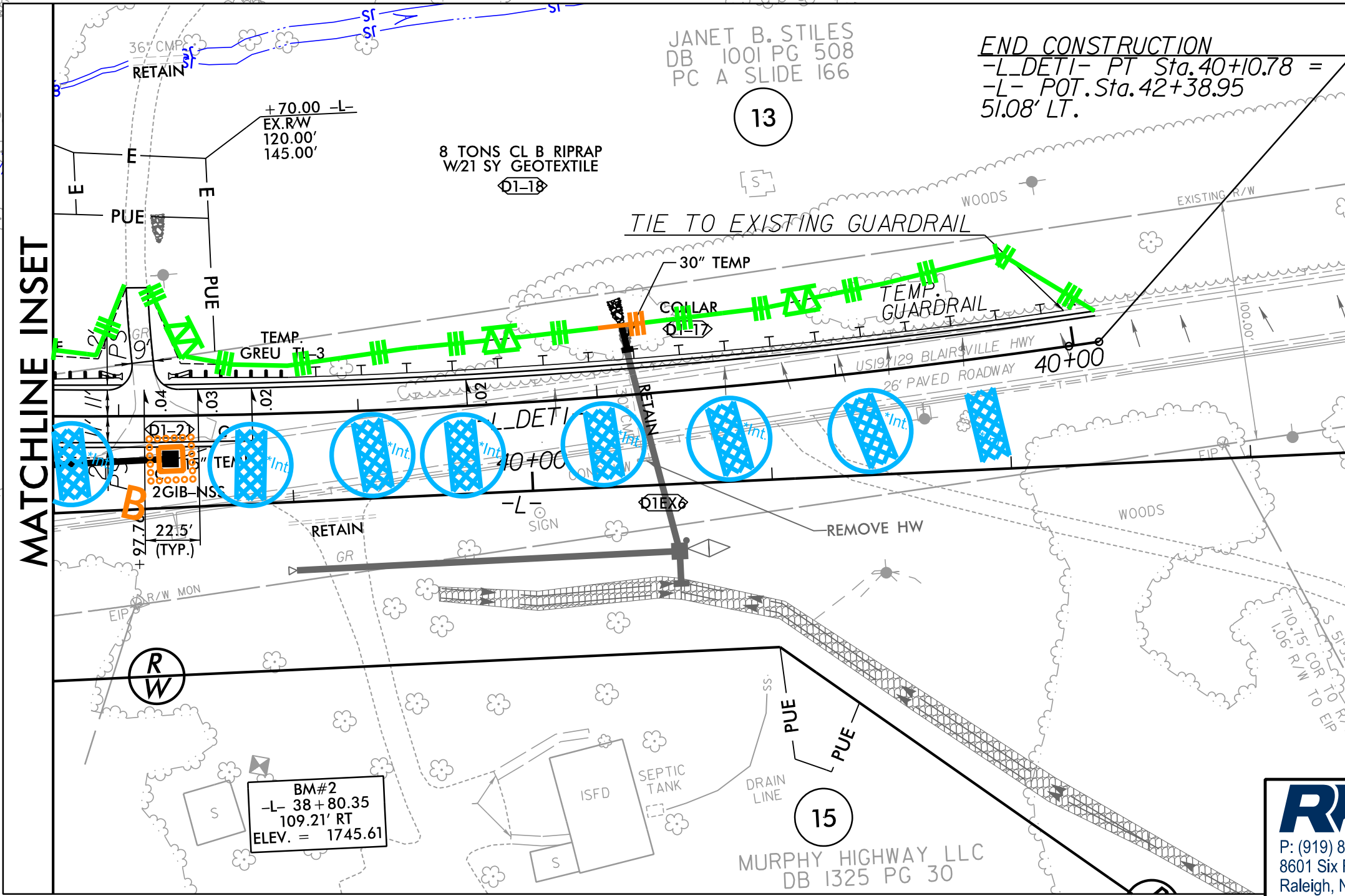
-L_DET1-	-DET_Y1-
PI Sta 33+73.45	PI Sta 12+46.36
$\Delta = 25^\circ 40' 02.9" (LT)$	$\Delta = 76^\circ 08' 01.5" (LT)$
$D = 1' 58' 45.2"$	$D = 38' 56' 32.8"$
$L = 1,296.84'$	$L = 195.50'$
$T = 659.52'$	$T = 117.48'$
$R = 2,895.00'$	$R = 150.00'$
$SE=0.04$	$SE=0.04$
$RO = 90^\circ$	$RO = 90^\circ$
$DS = 50 \text{ MPH}$	$DS = 25 \text{ MPH}$

MATCHLINE -L_DET1- STA. 22 + 00 SEE SHEET 2B-1

MATCHLINE INSET



UTILIZE INTERMEDIATE PHASE
EC DEVICES DURING THE
TEMPORARY SLOPE CONSTRUCTION
DUE TO TRAFFIC PHASING
CONSTRUCTIBILITY.



NOTES:
ALL DRIVES ARE 16' WIDE WITH 10' RADII UNLESS OTHERWISE NOTED.
ALL DETOURS WILL BE REMOVED.

- TEMPORARY DRAINAGE /PERMANENT DRAINAGE TO BE UTILIZED WHILE THE TEMPORARY DETOUR IS IN PLACE.
- PROPOSED DRAINAGE FOR FINAL CONDITION.

FOR RW AND EASEMENT
STATION/OFFSETS SEE SHTS. 5 AND 6.

FOR DITCH DETAILS SEE SHT. 2D-1 & 2D-2
FOR -L_DET1- PROFILE SEE SHT. 38
FOR -DET_Y1- PROFILE SEE SHT. 42
FOR TRAFFIC CONTROL PLANS SEE SHT. TMP-1 THRU TMP-56

RK&K
P: (919) 878-9560
8601 Six Forks Road, Forum 1, Suite 700
Raleigh, North Carolina 27615-3960
NC License No. F-0112

Engineers | Construction Managers | Planners | Scientists
www.rkk.com
Responsive People | Creative Solutions

8/17/2023 R:\Projects\2023\20230817\EC.dwg -L_DET1- 11:12:12.dwg