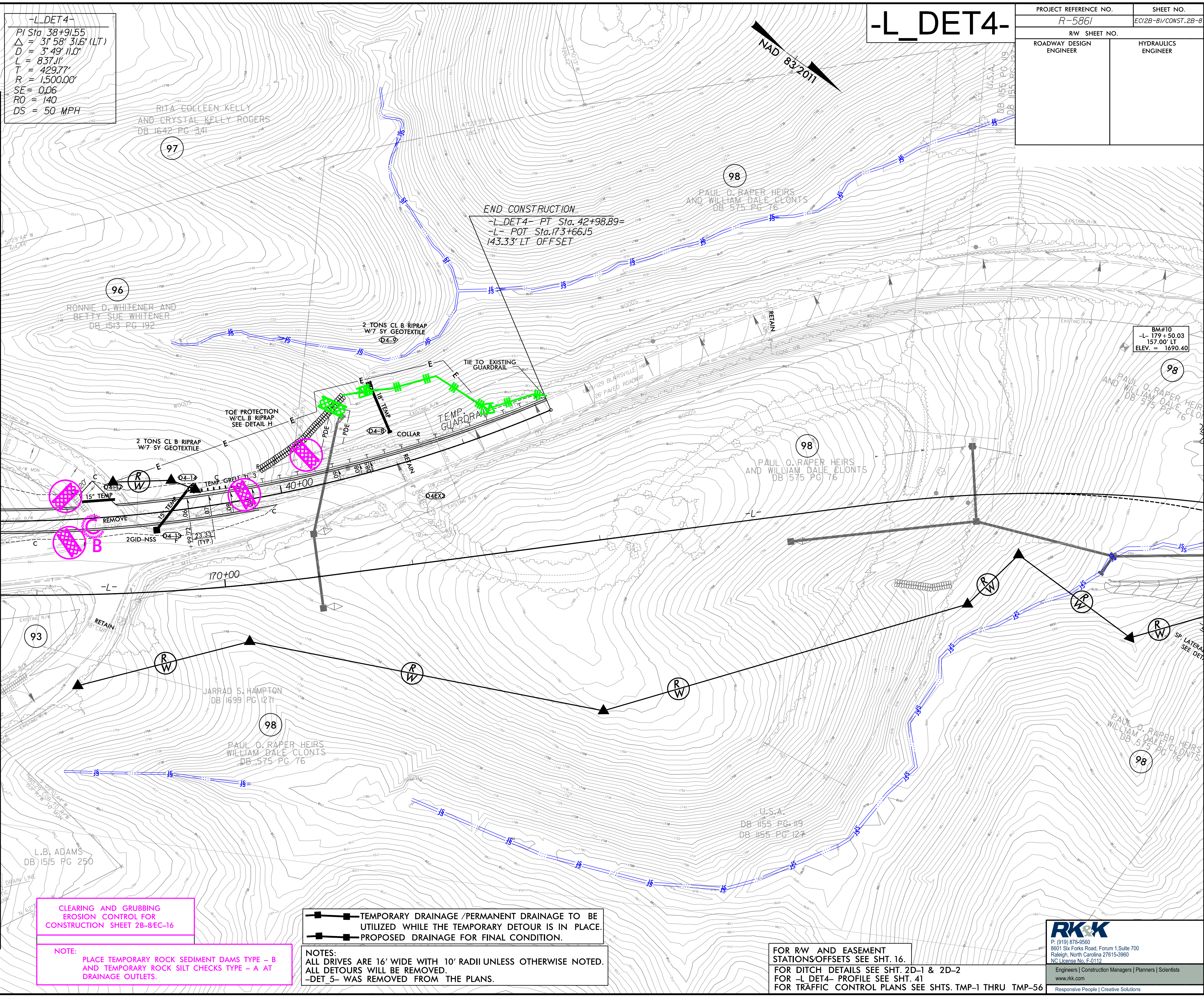


8/17/99  
R:\Projects\2023\RA\Highways\CAAD\PSH\Erosion\_Control\RB5861\_EC\_dan\_DET\_4\_psh2B-8.dgn

**-L\_DET4-**  
 PI Sta 38+91.55  
 $\Delta = 31' 58" 31.6" (LT)$   
 $D = 3' 49" 11.0"$   
 $L = 837.11'$   
 $T = 429.77'$   
 $R = 1,500.00'$   
 $SE = 0.06$   
 $RO = 140$   
 $DS = 50 MPH$

<b>-L_DET4-</b>	
PROJECT REFERENCE NO. R-5861	SHEET NO. EC12B-B/CONST.2B-8
RW SHEET NO.	
ROADWAY DESIGN ENGINEER	HYDRAULICS ENGINEER

MATCHLINE -L\_DET4- STA. 37+00 SEE SHEET 2B-7



CLEARING AND GRUBBING  
 EROSION CONTROL FOR  
 CONSTRUCTION SHEET 2B-8EC-16

NOTE:  
 PLACE TEMPORARY ROCK SEDIMENT DAMS TYPE - B  
 AND TEMPORARY ROCK SILT CHECKS TYPE - A AT  
 DRAINAGE OUTLETS.

—■—■— TEMPORARY DRAINAGE /PERMANENT DRAINAGE TO BE  
 UTILIZED WHILE THE TEMPORARY DETOUR IS IN PLACE.  
 —■—■— PROPOSED DRAINAGE FOR FINAL CONDITION.

NOTES:  
 ALL DRIVES ARE 16' WIDE WITH 10' RADII UNLESS OTHERWISE NOTED.  
 ALL DETOURS WILL BE REMOVED.  
 -DET 5- WAS REMOVED FROM THE PLANS.

FOR RW AND EASEMENT  
 STATION/OFFSETS SEE SHT. 16.  
 FOR DITCH DETAILS SEE SHT. 2D-1 & 2D-2  
 FOR -L\_DET4- PROFILE SEE SHT. 41  
 FOR TRAFFIC CONTROL PLANS SEE SHTS. TMP-1 THRU TMP-56

**RKK**  
 P: (919) 878-9560  
 8601 Six Forks Road, Forum 1, Suite 700  
 Raleigh, North Carolina 27615-3960  
 NC License No. F-0112  
 Engineers | Construction Managers | Planners | Scientists  
 www.rkk.com  
 Responsive People | Creative Solutions