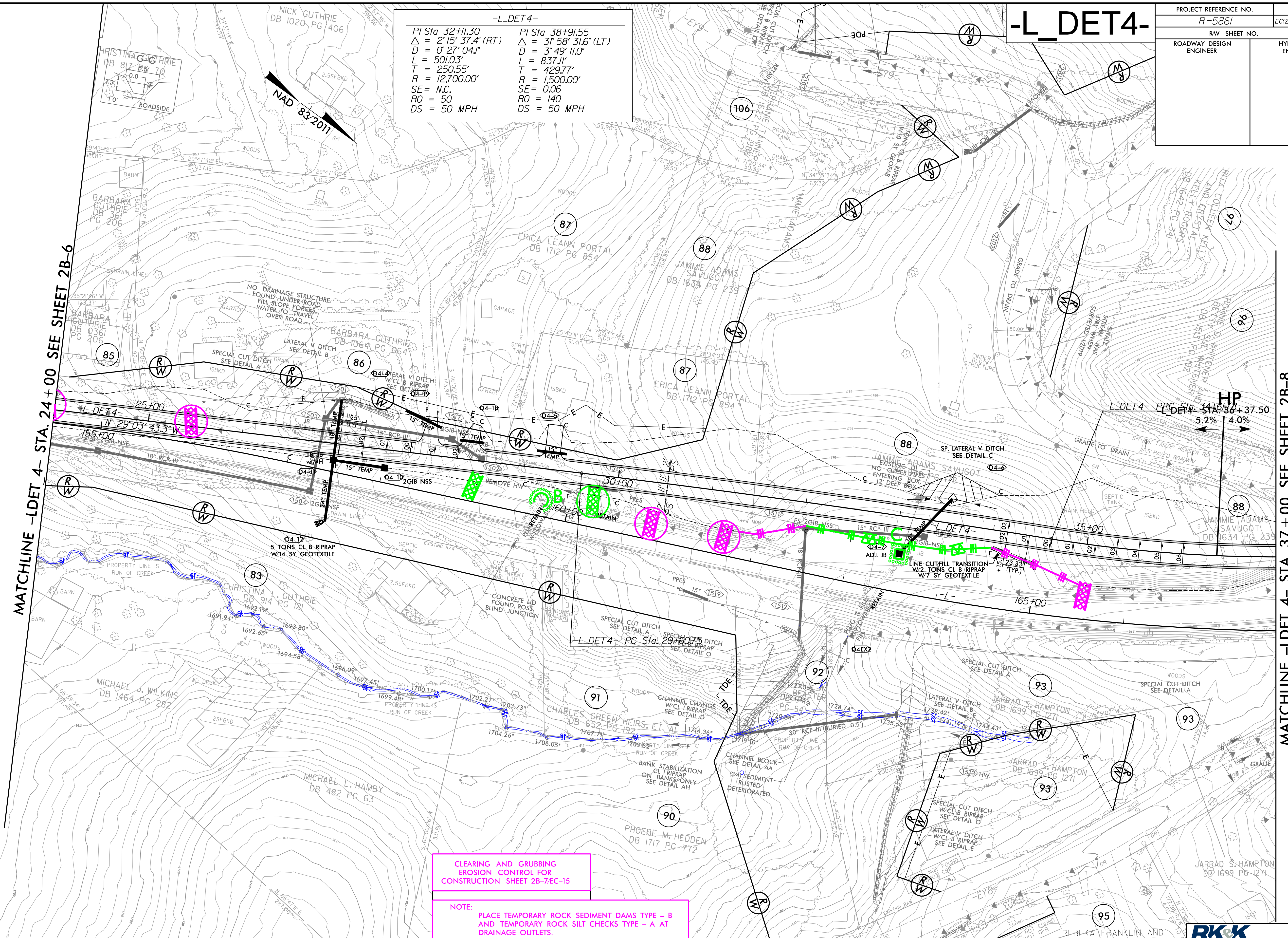


8.17.7.99
 R:\18\2023\RA\Highways\CAAD\PSH\Erosion_Control\RS861_EC_dan_DET_4_psh2B-7.dgn

PROJECT REFERENCE NO. R-5861	SHEET NO. EC12B-7/CONST.2B-7
RW SHEET NO.	
ROADWAY DESIGN ENGINEER	HYDRAULICS ENGINEER

-L_DET4-

PI Sta 32+11.30 Δ = 2' 15" 37.4" (RT) D = 0' 27" 04.1" L = 501.03' T = 250.55' SE = N.C. RO = 50 DS = 50 MPH	PI Sta 38+91.55 Δ = 3' 58" 31.6" (LT) D = 3' 49" 11.0" L = 837.11' T = 429.77' R = 1,500.00' SE = 0.06 RO = 140 DS = 50 MPH
---	---



MATCHLINE -LDET 4- STA. 24+00 SEE SHEET 2B-6

MATCHLINE -LDET 4- STA. 37+00 SEE SHEET 2B-8

CLEARING AND GRUBBING
EROSION CONTROL FOR
CONSTRUCTION SHEET 2B-7/EC-15

NOTE:
PLACE TEMPORARY ROCK SEDIMENT DAMS TYPE - B
AND TEMPORARY ROCK SILT CHECKS TYPE - A AT
DRAINAGE OUTLETS.

TEMPORARY DRAINAGE / PERMANENT DRAINAGE TO BE UTILIZED WHILE THE TEMPORARY DETOUR IS IN PLACE.
 PROPOSED DRAINAGE FOR FINAL CONDITION.

NOTES:
 ALL DRIVES ARE 16' WIDE WITH 10' RADII UNLESS OTHERWISE NOTED.
 ALL DETOURS WILL BE REMOVED.

FOR RW AND EASEMENT STATIONS/OFFSETS SEE SHT. 15.

FOR DITCH DETAILS SEE SHT. 2D-1 & 2D-2
 FOR -L_DET4- PROFILE SEE SHT. 41
 FOR TRAFFIC CONTROL PLANS SEE SHTS. TMP-1 THRU TMP-56

RKK
 (919) 878-9550
 8601 Six Forks Road, Forum 1, Suite 700
 Raleigh, North Carolina 27615-3960
 NC License No. F-0112
 Engineers | Construction Managers | Planners | Scientists
 www.rkk.com
 Responsive People | Creative Solutions