

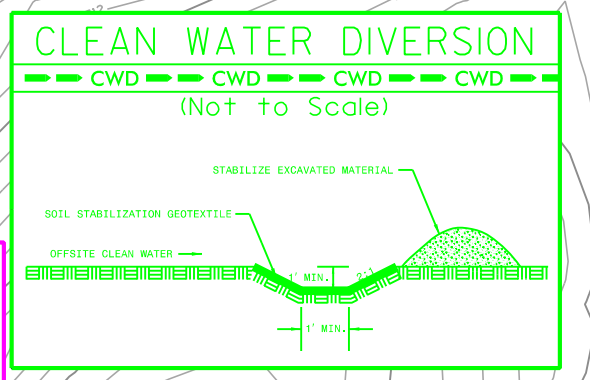
-L_DET2-

PROJECT REFERENCE NO.	SHEET NO.
R-5861	EC12B-3/CONST.2B-4
RW SHEET NO.	
ROADWAY DESIGN ENGINEER	HYDRAULICS ENGINEER

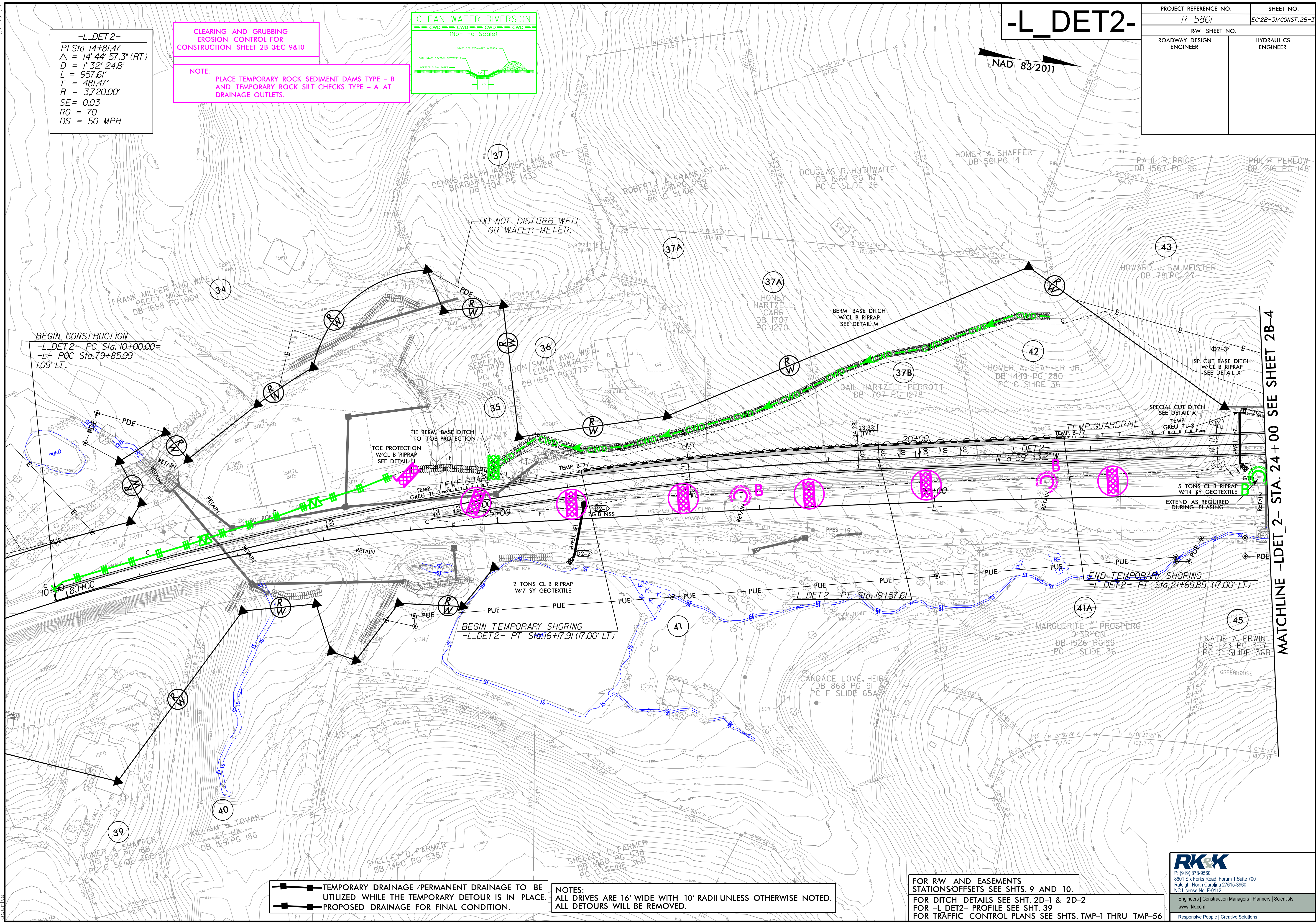
-L_DET2-
 PI Sta 14+81.47
 $\Delta = 14' 44" 57.3" (RT)$
 $D = 1' 32" 24.8"$
 $L = 957.61'$
 $T = 481.47'$
 $R = 3,720.00'$
 $SE = 0.03$
 $RO = 70$
 $DS = 50 MPH$

**CLEARING AND GRUBBING
 EROSION CONTROL FOR
 CONSTRUCTION SHEET 2B-3EC-9&10**

NOTE:
 PLACE TEMPORARY ROCK SEDIMENT DAMS TYPE - B
 AND TEMPORARY ROCK SILT CHECKS TYPE - A AT
 DRAINAGE OUTLETS.



NAD 83/2011



BEGIN TEMPORARY SHORING
 -L_DET2- PT Sta. 16+17.91 (17.00' LT)

END TEMPORARY SHORING
 -L_DET2- PT Sta. 21+69.85 (17.00' LT)

—■—■— TEMPORARY DRAINAGE / PERMANENT DRAINAGE TO BE UTILIZED WHILE THE TEMPORARY DETOUR IS IN PLACE.
 —■—■— PROPOSED DRAINAGE FOR FINAL CONDITION.

NOTES:
 ALL DRIVES ARE 16' WIDE WITH 10' RADII UNLESS OTHERWISE NOTED.
 ALL DETOURS WILL BE REMOVED.

FOR RW AND EASEMENTS STATIONS/OFFSETS SEE SHTS. 9 AND 10.
 FOR DITCH DETAILS SEE SHT. 2D-1 & 2D-2
 FOR -L_DET2- PROFILE SEE SHT. 39
 FOR TRAFFIC CONTROL PLANS SEE SHTS. TMP-1 THRU TMP-56

RKK
 P: (919) 878-9560
 8601 Six Forks Road, Forum 1, Suite 700
 Raleigh, North Carolina 27615-3960
 NC License No. F-0112
 Engineers | Construction Managers | Planners | Scientists
 www.rkk.com
 Responsive People | Creative Solutions

8/17/99
 R:\Projects\2023\RA\Highways\Control\PSH\Erosion_Control\R5861_EC_dan_DET_2_psh2B-3.dgn
 8/18/2023