

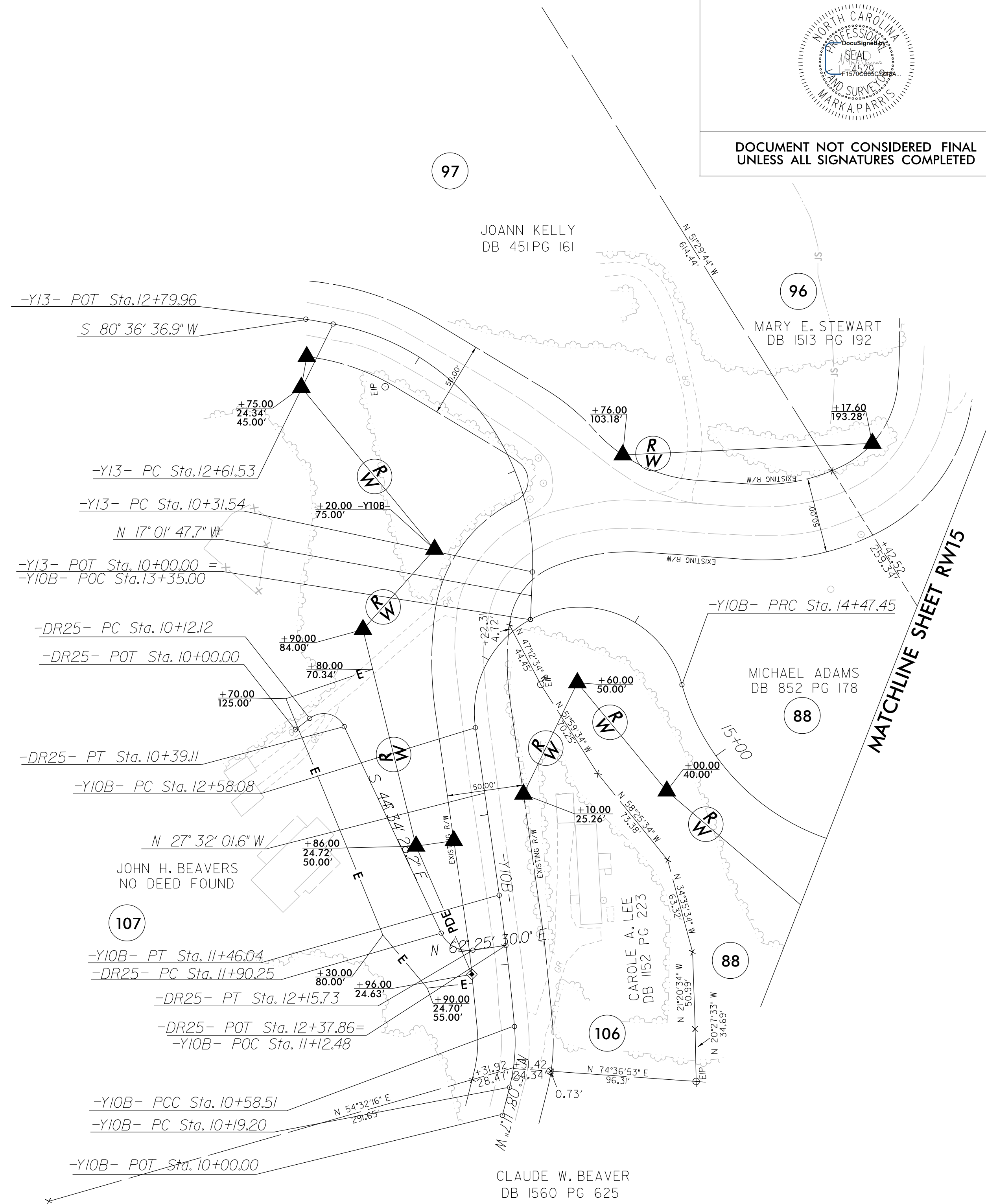
REVISIONS

Work\to\_send\VR5861\_1s\_RW19.dgn  
20-Jul-2021 11:06  
V:\N\5861\2021-19\_R-5861\_ROW\Survey\Draw  
jcgerdon

-Y10B-				-Y13-		-DR25-	
PI Sta 10+39.67	PI Sta 11+02.29	PI Sta 13+52.77	PI Sta 18+30.42	PI Sta 11+71.51	PI Sta 10+31.01	PI Sta 12+05.05	
$\Delta = 19^{\circ} 21' 25.9" (LT)$	$\Delta = 3^{\circ} 02' 24.0" (LT)$	$\Delta = 17^{\circ} 38' 45.0" (RT)$	$\Delta = 13^{\circ} 13' 19.0" (LT)$	$\Delta = 82^{\circ} 21' 35.4" (LT)$	$\Delta = 103^{\circ} 05' 47.7" (RT)$	$\Delta = 73^{\circ} 00' 03.8" (LT)$	
D = 49' 14" 55.1"	D = 3' 28" 22.8"	D = 9' 10" 09.8"	D = 38' 11" 49.9"	D = 35' 48" 35.5"	D = 38' 58" 18.7"	D = 286' 28" 44.0"	
L = 39.31'	L = 87.53'	L = 189.37'	L = 359.25'	L = 229.99'	L = 26.99'	L = 25.48'	
T = 20.47'	T = 43.78'	T = 1,089.23'	T = 382.97'	T = 139.97'	T = 18.89'	T = 14.80'	
R = 120.00'	R = 1,650.00'	R = 70.00'	R = 150.00'	R = 160.00'	R = 15.00'	R = 20.00'	



PROJECT REFERENCE NO. R-5861	SHEET NO. RW19
<b>Location and Surveys</b>	
 1316-F Patton Avenue Asheville, NC 28806 Firm License # F-1088	
PROJECT SURVEYOR	
DOCUMENT NOT CONSIDERED FINAL UNLESS ALL SIGNATURES COMPLETED	



**NOTES:**

1. IF FURTHER INFORMATION REGARDING PROJECT CONTROL IS NEEDED PLEASE CONTACT THE LOCATION AND SURVEYS UNIT.
2. PROJECT CONTROL WAS ESTABLISHED USING GNSS, THE GLOBAL NAVIGATION SATELLITE SYSTEM.
3. RIGHT OF WAY MONUMENTATION ESTABLISHED MAY 2021 TO JULY 2021 .

I, Mark A. Paris, certify that the right of way and permanent easement monumentation for this project shown herein was completed under my direct and responsible charge from an actual survey made under my supervision; that all horizontal closures had a minimum ratio of precision of 1:10,000 (Class A). Field work was performed from May 2021 to July 2021, and all coordinates are based on NAD83/2011; That this survey was performed to meet the requirements of 21NCAC 56.1600 as applicable.

This 19 day of July, 2021.

Professional Land Surveyor L-4529