
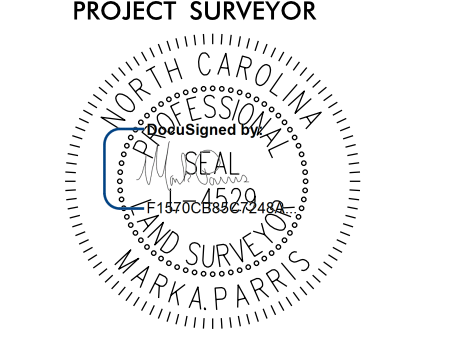


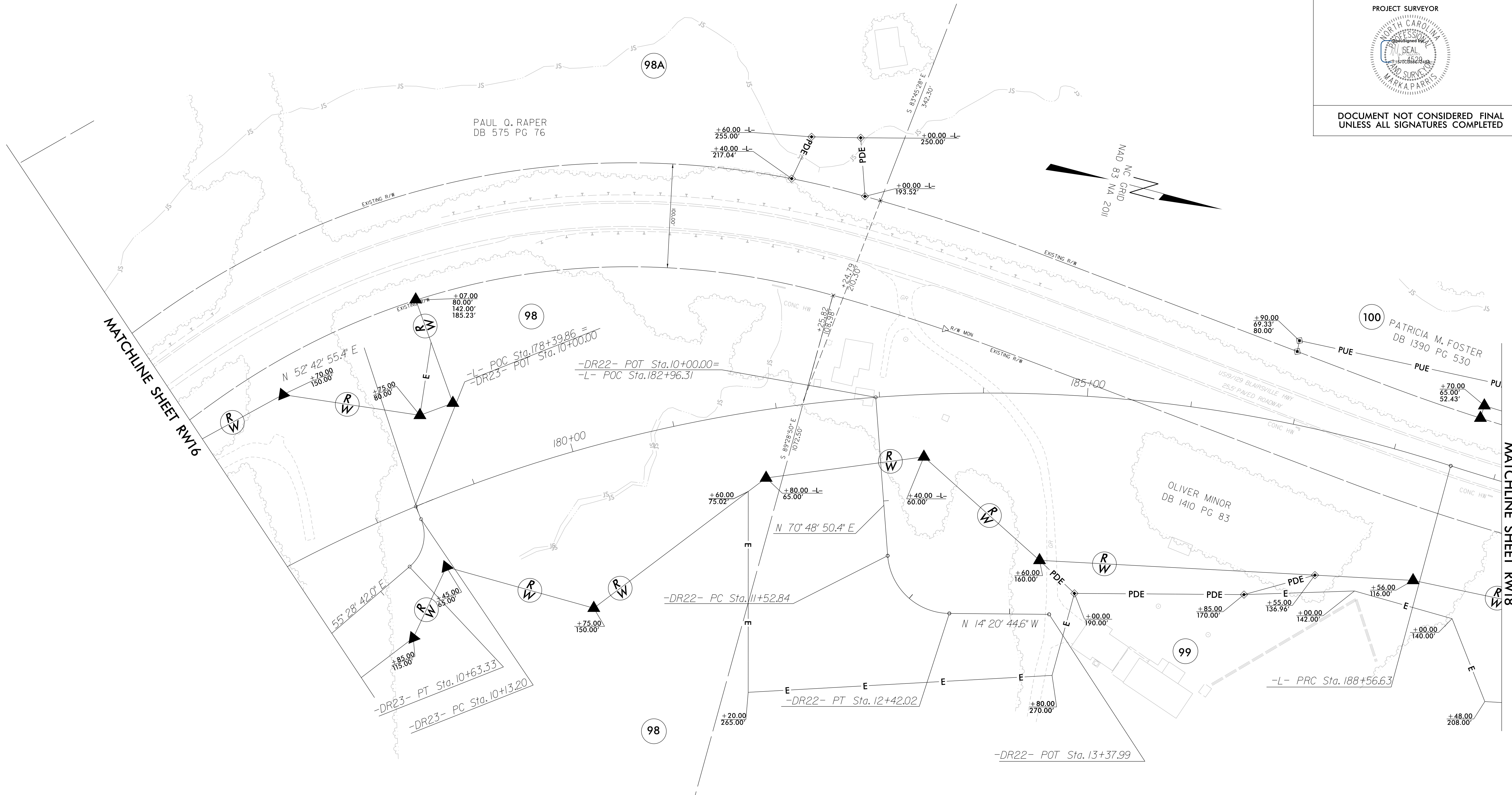
REVISIONS

-L-		-DR22-	
PI Sta 183+05.70	PI Sta 191+58.44	PI Sta 12+07.98	
$\Delta = 46^{\circ} 24' 17.4''$ (RT)	$\Delta = 17^{\circ} 17' 27.2''$ (LT)	$\Delta = 85^{\circ} 09' 35.0''$ (LT)	
D = 3' 57' 54.4"	D = 2' 53' 11.2"	D = 95' 29' 34.7"	
L = 1,170.33'	L = 599.04'	L = 891.8'	
T = 619.40'	T = 301.81'	T = 55.13'	
R = 1,445.00'	R = 1,985.00'	R = 60.00'	

I, Mark A. Parris, certify that the right of way and permanent easement monumentation for this project shown herein was completed under my direct and responsible charge from an actual survey made under my supervision; that all horizontal closures had a minimum ratio of precision of 1:10,000 (Class A). Field work was performed from May 2021 to July 2021, and all coordinates are based on NAD83/2011. That this survey was performed to meet the requirements of 21NCAC 56.1600 as applicable.

This is day of July, 2021.
Professional Land Surveyor L-4529

PROJECT REFERENCE NO. R-5861	SHEET NO. RW17
Location and Surveys	
 1318-F Patton Avenue Asheville, NC 28806 Firm License # F-1088	
PROJECT SURVEYOR	
	
DOCUMENT NOT CONSIDERED FINAL UNLESS ALL SIGNATURES COMPLETED	



NOTES:

1. IF FURTHER INFORMATION REGARDING PROJECT CONTROL IS NEEDED PLEASE CONTACT THE LOCATION AND SURVEYS UNIT.
2. PROJECT CONTROL WAS ESTABLISHED USING GNSS, THE GLOBAL NAVIGATION SATELLITE SYSTEM.
3. RIGHT OF WAY MONUMENTATION ESTABLISHED MAY 2021 TO JULY 2021 .