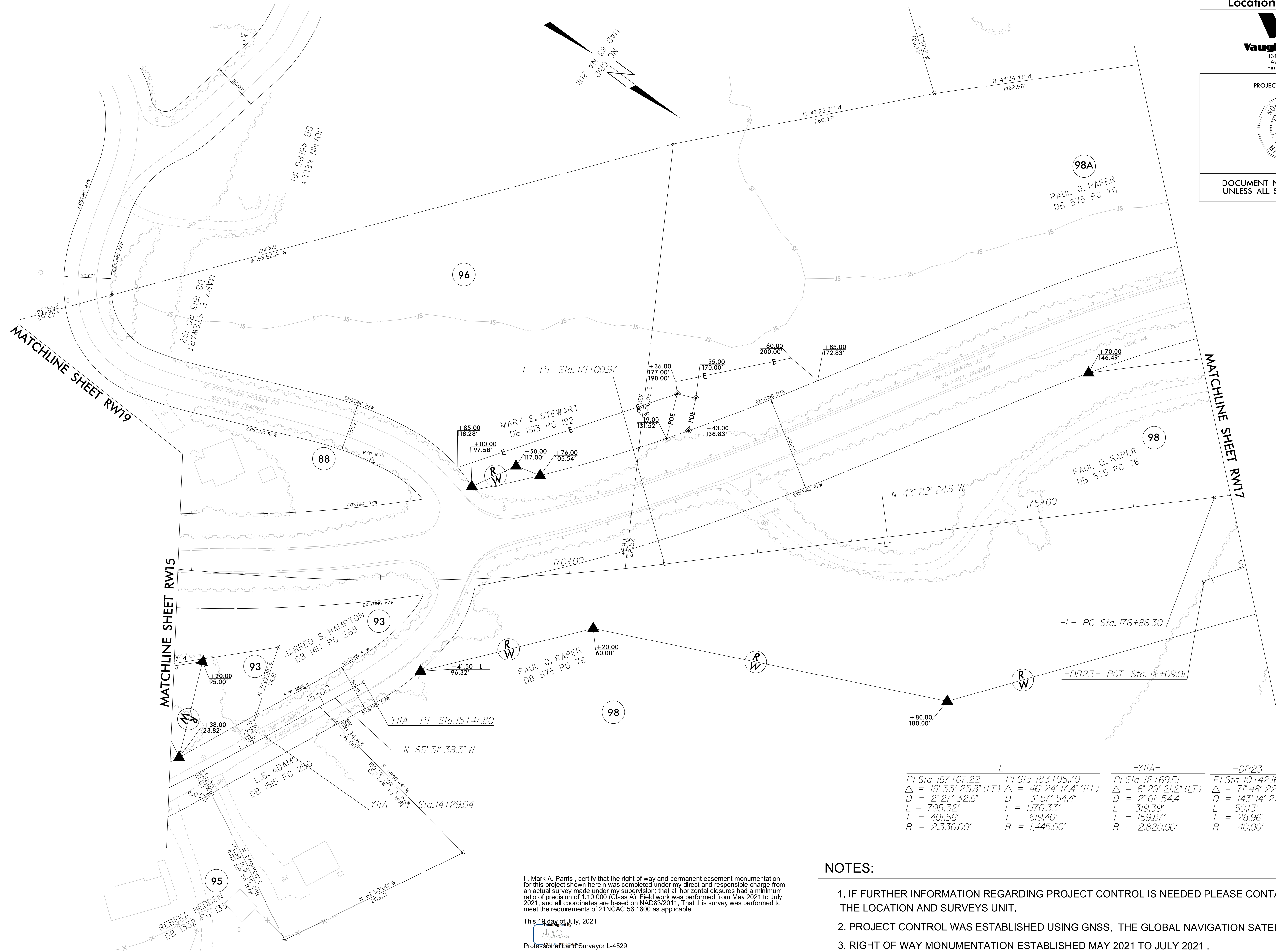


REVISIONS

Work\to_send\VR5861.LS_RW16.dgn

20-11-2021\108-32012-19_R-5861_RDM\Survey\Draw - Mark A. Parrs



PROJECT REFERENCE NO. R-5861	SHEET NO. RW16
Location and Surveys	
 1318-F Patton Avenue Asheville, NC 28906 Firm License # F-1088	
PROJECT SURVEYOR	
DOCUMENT NOT CONSIDERED FINAL UNLESS ALL SIGNATURES COMPLETED	

-L-	-YIIA-	-DR23
PI Sta 167+07.22	PI Sta 183+05.70	PI Sta 12+69.51
$\Delta = 19' 33" 25.8"$ (LT)	$\Delta = 46' 24' 17.4"$ (RT)	$\Delta = 6' 29' 21.2"$ (LT)
$D = 2' 27' 32.6"$	$D = 3' 57' 54.4"$	$D = 2' 01' 54.4"$
$L = 795.32'$	$L = 1,170.33'$	$L = 319.39'$
$T = 401.56'$	$T = 619.40'$	$T = 159.87'$
$R = 2,330.00'$	$R = 1,445.00'$	$R = 2,820.00'$

I, Mark A. Parrs, certify that the right of way and permanent easement monumentation for this project shown herein was completed under my direct and responsible charge from an actual survey made under my supervision; that all horizontal closures had a minimum ratio of precision of 1:10,000 (Class A). Field work was performed from May 2021 to July 2021, and all coordinates are based on NAD83/2011; That this survey was performed to meet the requirements of 21NCAC 56.1600 as applicable.

This 19 day of July, 2021.

Professional Land Surveyor L-4529

- NOTES:**
1. IF FURTHER INFORMATION REGARDING PROJECT CONTROL IS NEEDED PLEASE CONTACT THE LOCATION AND SURVEYS UNIT.
 2. PROJECT CONTROL WAS ESTABLISHED USING GNSS, THE GLOBAL NAVIGATION SATELLITE SYSTEM.
 3. RIGHT OF WAY MONUMENTATION ESTABLISHED MAY 2021 TO JULY 2021 .