
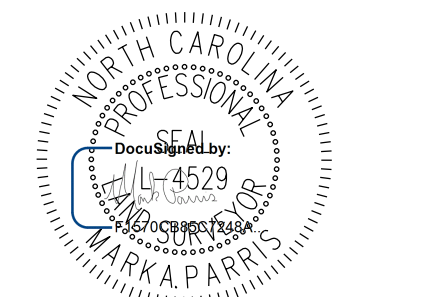


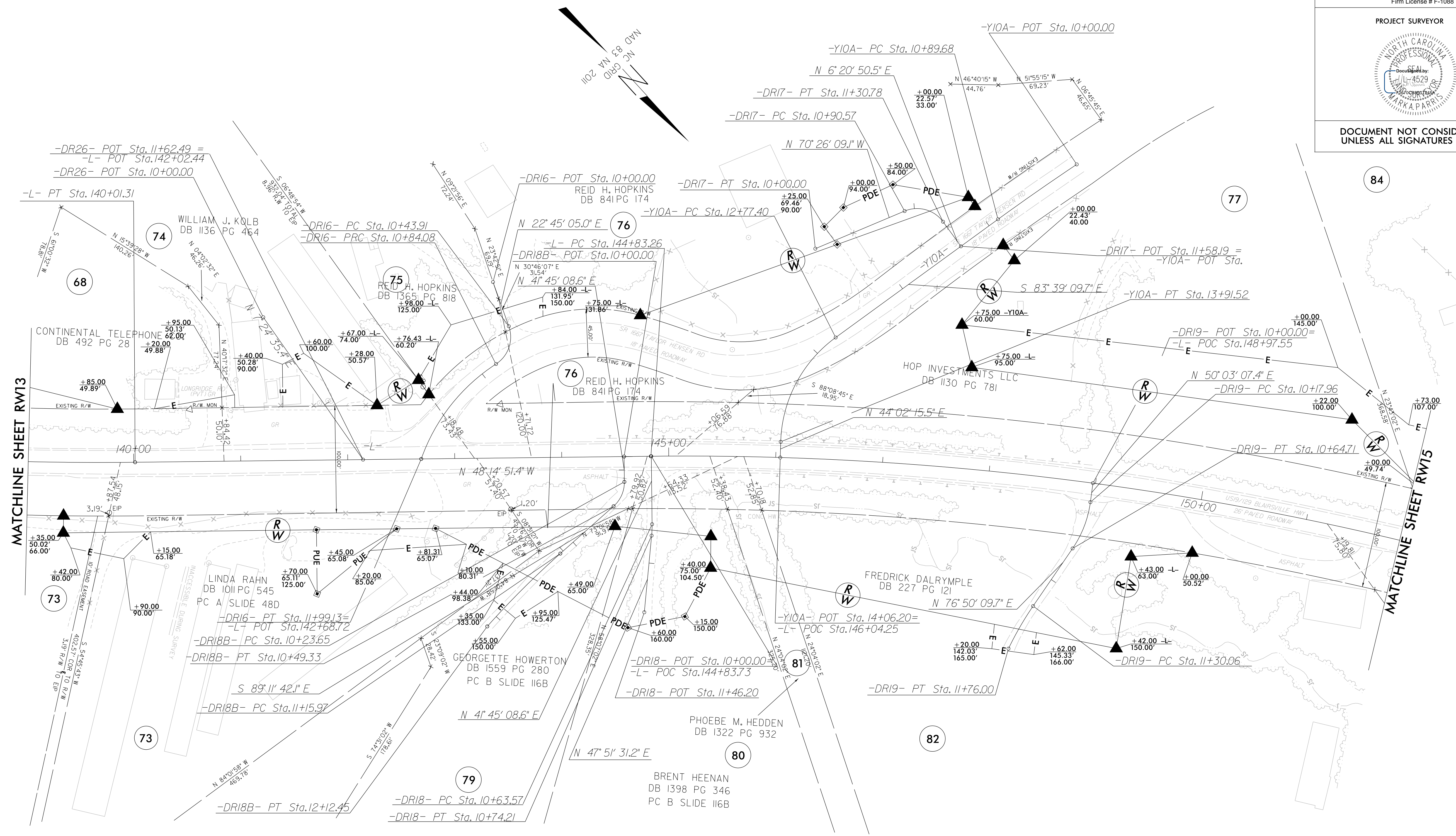
-L-		-Y10A-		-DR16-		-DR17-		-DR18-	
PI Sta 135+82.23	PI Sta 151+02.43	PI Sta 10+44.85	PI Sta 13+38.78	PI Sta 10+67.65	PI Sta 11+43.77	PI Sta 11+14.34	PI Sta 10+68.89	PI Sta 10+68.89	PI Sta 10+68.89
$\Delta = 16^\circ 58' 31.5" (LT)$	$\Delta = 24^\circ 25' 52.3" (RT)$	$\Delta = 2^\circ 20' 08.2" (LT)$	$\Delta = 52^\circ 18' 34.8" (LT)$	$\Delta = 76^\circ 43' 07.2" (RT)$	$\Delta = 37^\circ 40' 05.5" (LT)$	$\Delta = 76^\circ 46' 59.6" (RT)$	$\Delta = 6^\circ 05' 49.0" (RT)$	$\Delta = 6^\circ 05' 49.0" (RT)$	$\Delta = 6^\circ 05' 49.0" (RT)$
D = 2' 00' 37.4"	D = 2' 00' 12.1"	D = 2' 36' 15.7"	D = 45' 50' 11.8"	D = 190' 59' 09.4"	D = 32' 44' 25.6"	D = 190' 59' 09.4"	D = 57' 17' 44.8"	D = 57' 17' 44.8"	D = 57' 17' 44.8"
L = 844.39'	L = 1,219.52'	L = 89.68'	L = 114.12'	L = 40.17'	L = 115.05'	L = 40.20'	L = 10.64'	L = 10.64'	L = 10.64'
T = 425.31'	T = 619.17'	T = 44.85'	T = 61.39'	T = 23.74'	T = 59.69'	T = 23.77'	T = 5.33'	T = 5.33'	T = 5.33'
R = 2,850.00'	R = 2,860.00'	R = 2,200.00'	R = 125.00'	R = 30.00'	R = 175.00'	R = 30.00'	R = 100.00'	R = 100.00'	R = 100.00'

I, Mark A. Parris, certify that the right of way and permanent easement monumentation for this project shown herein was completed under my direct and responsible charge from an actual survey made under my supervision; that all horizontal closures had a minimum ratio of precision of 1:10,000 (Class A). Field work was performed from May 2021 to July 2021, and all coordinates are based on NAD83/2011; That this survey was performed to meet the requirements of 21NCAC 56.1600 as applicable.

This 19 day of July, 2021.

Professional Land Surveyor L-4529

PROJECT REFERENCE NO.	SHEET NO.
R-5861	RW14
<b>Location and Surveys</b>	
 1318-F Patton Avenue Asheville, NC 28806 Firm License # F-1088	
PROJECT SURVEYOR	
	
DOCUMENT NOT CONSIDERED FINAL UNLESS ALL SIGNATURES COMPLETED	



-DR18B-		-DR19-	
PI Sta 10+37.34	PI Sta 11+64.26	PI Sta 10+41.77	PI Sta 11+53.07
$\Delta = 49^\circ 03' 09.3" (RT)$	$\Delta = 6^\circ 39' 37.5" (LT)$	$\Delta = 26^\circ 47' 02.3" (RT)$	$\Delta = 8^\circ 46' 24.5" (LT)$
D = 190' 59' 09.4"	D = 6' 54' 11.2"	D = 57' 17' 44.8"	D = 19' 05' 54.9"
L = 25.68'	L = 96.48'	L = 46.75'	L = 45.94'
T = 13.69'	T = 48.30'	T = 23.81'	T = 23.01'
R = 30.00'	R = 830.00'	R = 100.00'	R = 300.00'

**NOTES:**

1. IF FURTHER INFORMATION REGARDING PROJECT CONTROL IS NEEDED PLEASE CONTACT THE LOCATION AND SURVEYS UNIT.
2. PROJECT CONTROL WAS ESTABLISHED USING GNSS, THE GLOBAL NAVIGATION SATELLITE SYSTEM.
3. RIGHT OF WAY MONUMENTATION ESTABLISHED MAY 2021 TO JULY 2021.

REVISIONS

20-JUL-2021 11:32  
 V:\N\5861\3032012-19\_R-5861\_ROW\SURVEY\DATA - Work\to\_send\VR5861\_Ls\_RW14.dgn  
 AT WKS-1903P-29  
 Jcgaradon