

REVISIONS

MATCHLINE SHEET RW10

MATCHLINE SHEET RW11

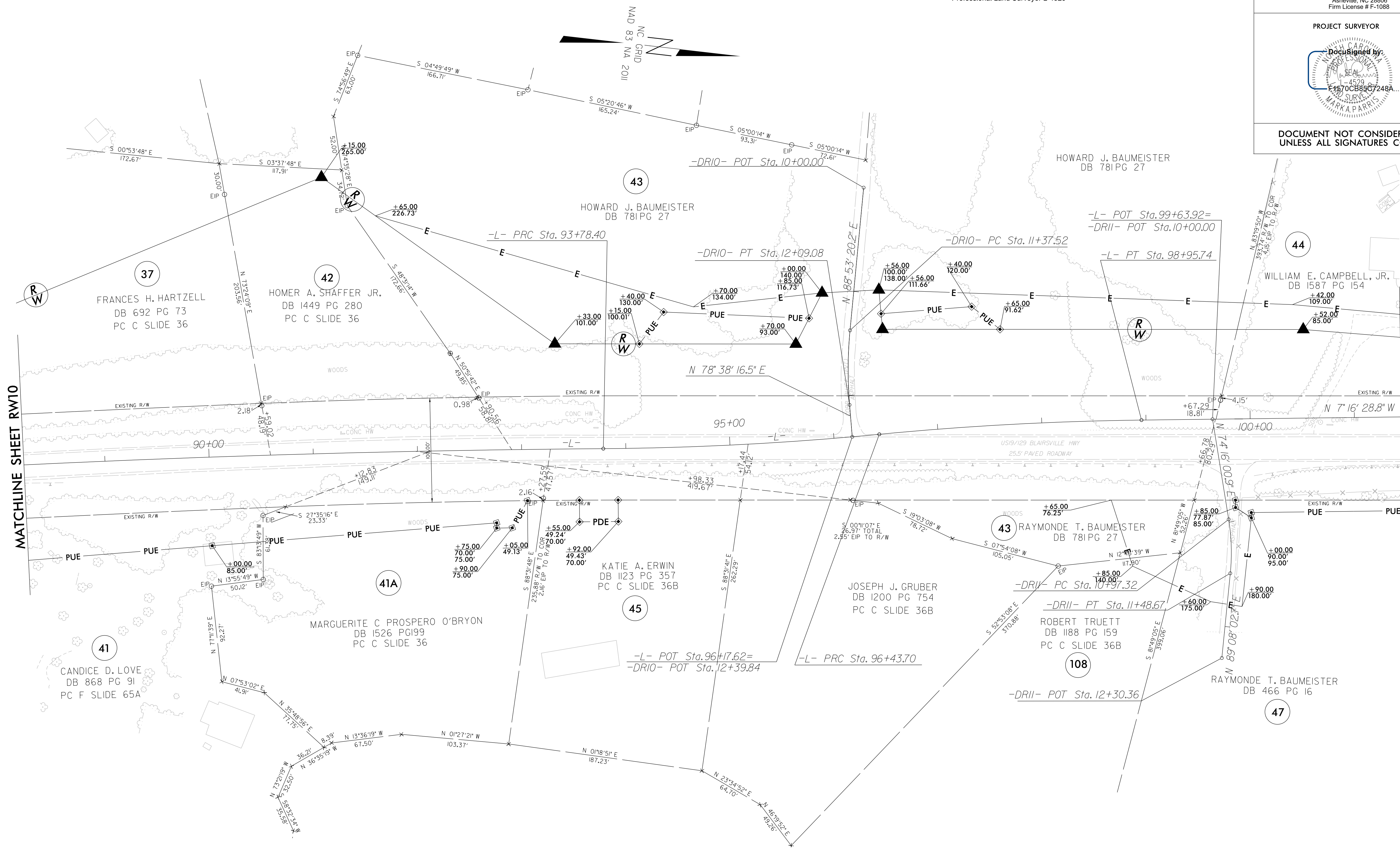
-L-		-DRIO-		-DRII-	
PI Sta 90+43.98	PI Sta 95+111.3	PI Sta 97+69.79	PI Sta 11+73.39	PI Sta 11+23.42	
$\Delta = 2^\circ 47' 40.83''$ (RT)	$\Delta = 5^\circ 4' 00.1''$ (LT)	$\Delta = 4^\circ 48' 49.0''$ (RT)	$\Delta = 10^\circ 15' 03.7''$ (LT)	$\Delta = 14^\circ 52' 01.7''$ (RT)	
D = 0' 25' 03.9"	D = 1' 54' 35.49"	D = 1' 54' 35.49"	D = 14' 19' 26.2"	D = 28' 57' 18.1"	
L = 668.97'	L = 265.30'	L = 252.04'	L = 71.57'	L = 51.35'	
T = 334.55'	T = 132.73'	T = 126.09'	T = 35.88'	T = 26.09'	
R = 13,715.00'	R = 3,000.00'	R = 3,000.00'	R = 400.00'	R = 200.00'	

I, Mark A. Parris, certify that the right of way and permanent easement monumentation for this project shown herein was completed under my direct and responsible charge from an actual survey made under my supervision; that all horizontal closures had a minimum ratio of precision of 1:10,000 (Class A). Field work was performed from May 2021 to July 2021, and all coordinates are based on NAD83/2011; That this survey was performed to meet the requirements of 21NCAC 56.1600 as applicable.

This is a day of July, 2021.

Mark A. Parris
Professional Land Surveyor L-4529

PROJECT REFERENCE NO. R-5861	SHEET NO. RW10
Location and Surveys	
V&M Vaughn & Melton 1318-F Patton Avenue Asheville, NC 28806 Firm License # F-1088	
PROJECT SURVEYOR DocuSigned by: M. A. Parris E1570CB85C7248A...	
DOCUMENT NOT CONSIDERED FINAL UNLESS ALL SIGNATURES COMPLETED	



- NOTES:**
1. IF FURTHER INFORMATION REGARDING PROJECT CONTROL IS NEEDED PLEASE CONTACT THE LOCATION AND SURVEYS UNIT.
 2. PROJECT CONTROL WAS ESTABLISHED USING GNSS, THE GLOBAL NAVIGATION SATELLITE SYSTEM.
 3. RIGHT OF WAY MONUMENTATION ESTABLISHED MAY 2021 TO JULY 2021 .