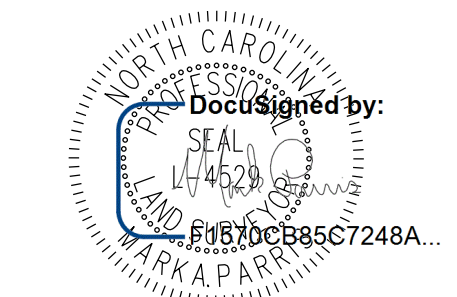


Location and Surveys

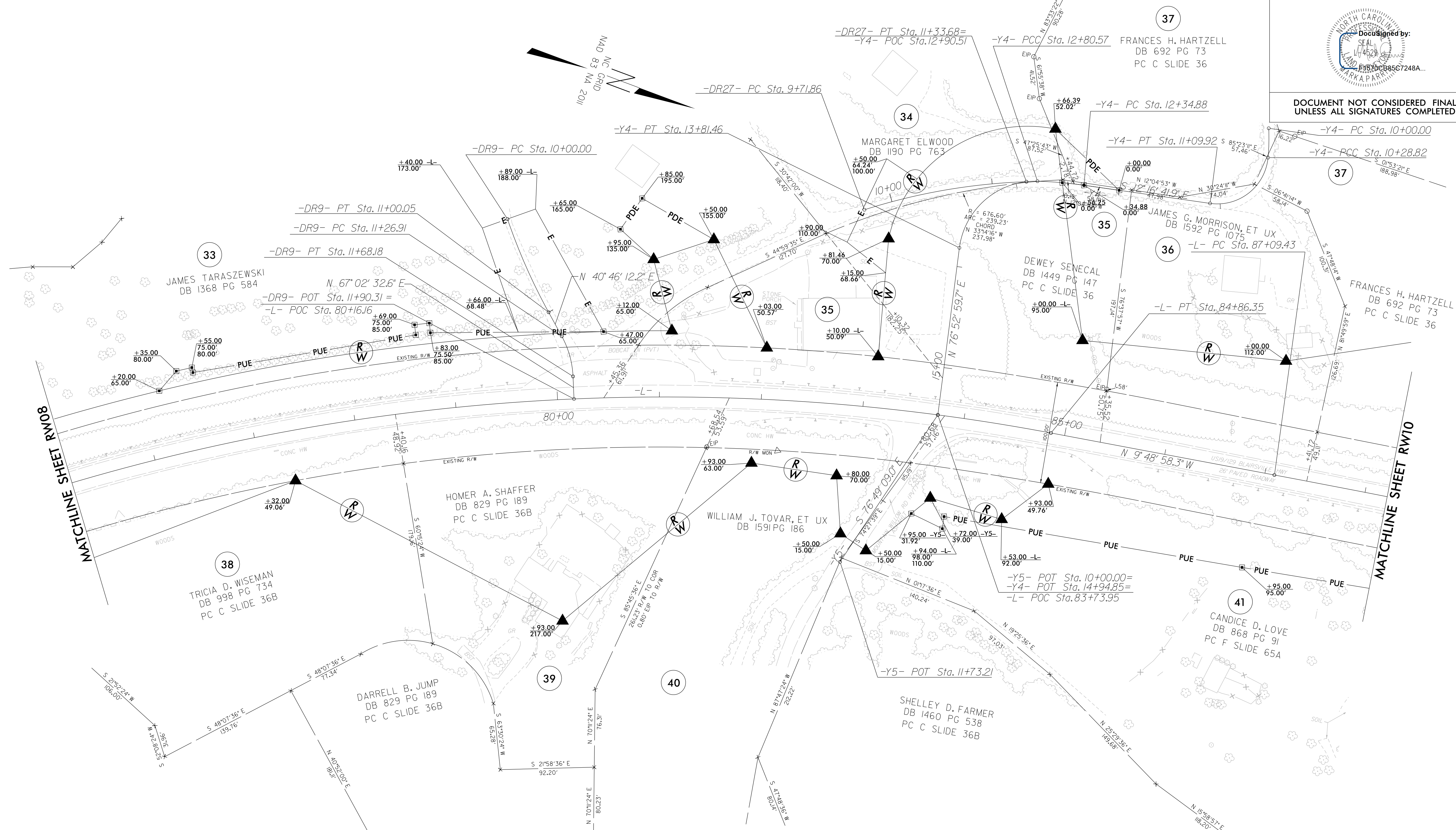


PROJECT SURVEYOR



DOCUMENT NOT CONSIDERED FINAL UNLESS ALL SIGNATURES COMPLETED

-DR9-		-L-		-Y4-		-DR27-	
PI Sta 10+50.15	PI Sta 11+47.91	PI Sta 75+17.07	PI Sta 90+43.98	PI Sta 10+14.44	PI Sta 10+81.45	PI Sta 12+57.81	PI Sta 13+48.53
$\Delta = 9^{\circ} 53' 01.0''$ (LT)	$\Delta = 26^{\circ} 16' 20.4''$ (RT)	$\Delta = 60^{\circ} 30' 48.9''$ (RT)	$\Delta = 2^{\circ} 47' 40.83''$ (RT)	$\Delta = 7^{\circ} 51' 52.2''$ (RT)	$\Delta = 92^{\circ} 55' 38.0''$ (RT)	$\Delta = 6^{\circ} 28' 50.8''$ (LT)	$\Delta = 84^{\circ} 21' 27.6''$ (LT)
D = 9' 52" 42.9"	D = 63' 39" 43.1"	D = 2' 47" 41.7"	D = 0' 25" 03.9"	D = 27' 17" 01.3"	D = 114' 35" 29.6"	D = 14' 10" 59.9"	D = 83' 37" 14.3"
L = 100.05'	L = 41.27'	L = 2,165.13'	L = 668.97'	L = 28.82'	L = 81.09'	L = 45.69'	L = 100.88'
T = 50.15'	T = 21.00'	T = 1,195.85'	T = 334.55'	T = 14.44'	T = 52.62'	T = 22.93'	T = 67.96'
R = 580.00'	R = 90.00'	R = 2,050.00'	R = 13,715.00'	R = 210.00'	R = 50.00'	R = 405.00'	R = 75.00'



I, Mark A. Parris, certify that the right of way and permanent easement monumentation for this project shown herein was completed under my direct and responsible charge from an actual survey made under my supervision; that all horizontal closures had a minimum ratio of precision of 1:10,000 (Class A). Field work was performed from May 2021 to July 2021, and all coordinates are based on NAD83/2011; That this survey was performed to meet the requirements of 21NCAC 56.1600 as applicable.

This 19 day of July, 2021.
 Mark A. Parris
 Professional Land Surveyor L-4529

NOTES:

1. IF FURTHER INFORMATION REGARDING PROJECT CONTROL IS NEEDED PLEASE CONTACT THE LOCATION AND SURVEYS UNIT.
2. PROJECT CONTROL WAS ESTABLISHED USING GNSS, THE GLOBAL NAVIGATION SATELLITE SYSTEM.
3. RIGHT OF WAY MONUMENTATION ESTABLISHED MAY 2021 TO JULY 2021.

REVISIONS

20210719_1032012-19_R-5861_R09A_Survey_Data - Work\to_send\VR5861_1s_RW09.dgn
 20210719_1032012-19_R-5861_R09A_Survey_Data - Work\to_send\VR5861_1s_RW09.dgn