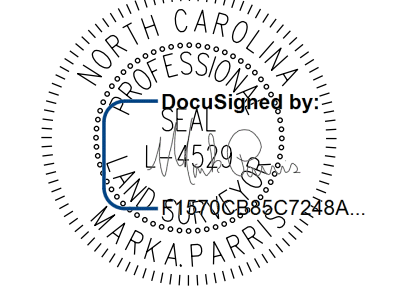


Location and Surveys



1318-F Patton Avenue Asheville, NC 28906 Firm License # F-1088

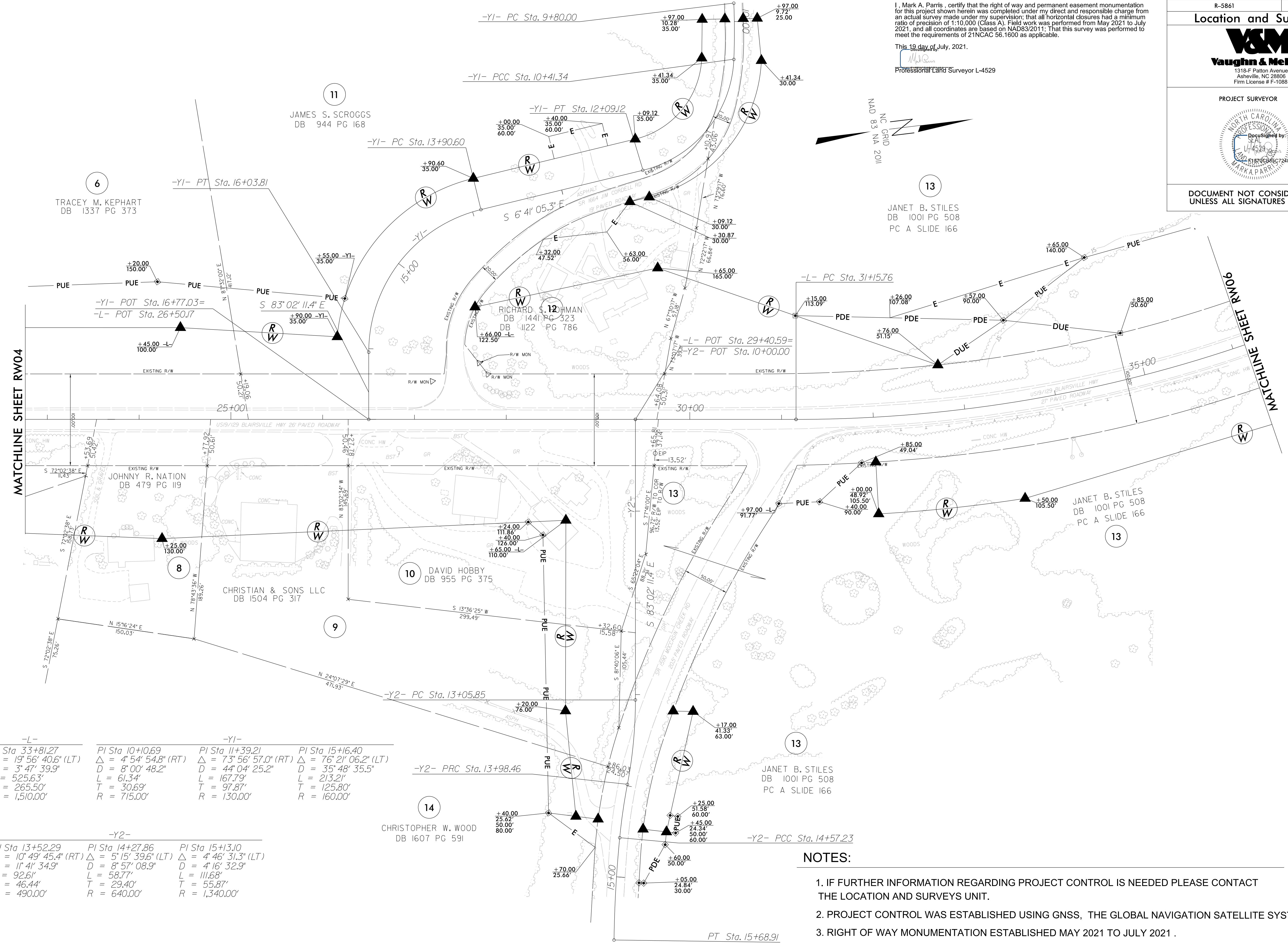
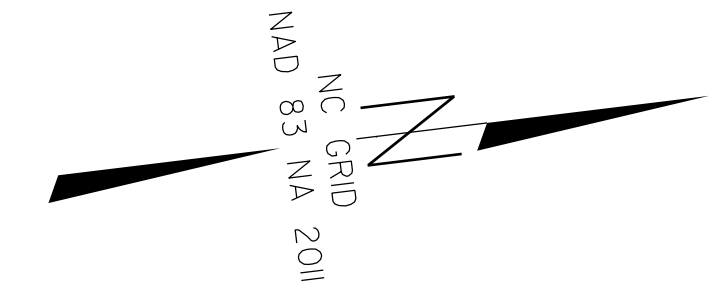
PROJECT SURVEYOR



DOCUMENT NOT CONSIDERED FINAL UNLESS ALL SIGNATURES COMPLETED

I, Mark A. Parris, certify that the right of way and permanent easement monumentation for this project shown herein was completed under my direct and responsible charge from an actual survey made under my supervision; that all horizontal closures had a minimum ratio of precision of 1:10,000 (Class A). Field work was performed from May 2021 to July 2021, and all coordinates are based on NAD83/2011. That this survey was performed to meet the requirements of 21NCAC 56.1600 as applicable.

This is a day of July, 2021. Professional Land Surveyor L-4629



-L-		-Y1-	
PI Sta 33+81.27	PI Sta 10+10.69	PI Sta 11+39.21	PI Sta 15+16.40
$\Delta = 19^{\circ} 56' 40.6''$ (LT)	$\Delta = 4^{\circ} 54' 54.8''$ (RT)	$\Delta = 73^{\circ} 56' 57.0''$ (RT)	$\Delta = 76^{\circ} 21' 06.2''$ (LT)
D = 3' 47' 39.9"	D = 8' 00' 48.2"	D = 44' 04' 25.2"	D = 35' 48' 35.5"
L = 525.63'	L = 61.34'	L = 167.79'	L = 213.21'
T = 265.50'	T = 30.69'	T = 97.87'	T = 125.80'
R = 1510.00'	R = 715.00'	R = 130.00'	R = 160.00'

-Y2-		
PI Sta 13+52.29	PI Sta 14+27.86	PI Sta 15+13.10
$\Delta = 10^{\circ} 49' 45.4''$ (RT)	$\Delta = 5^{\circ} 15' 39.6''$ (LT)	$\Delta = 4^{\circ} 46' 31.3''$ (LT)
D = 11' 41' 34.9"	D = 8' 57' 08.9"	D = 4' 16' 32.9"
L = 92.61'	L = 58.77'	L = 111.68'
T = 46.44'	T = 29.40'	T = 55.87'
R = 490.00'	R = 640.00'	R = 1,340.00'

NOTES:

1. IF FURTHER INFORMATION REGARDING PROJECT CONTROL IS NEEDED PLEASE CONTACT THE LOCATION AND SURVEYS UNIT.
2. PROJECT CONTROL WAS ESTABLISHED USING GNSS, THE GLOBAL NAVIGATION SATELLITE SYSTEM.
3. RIGHT OF WAY MONUMENTATION ESTABLISHED MAY 2021 TO JULY 2021 .

REVISIONS

Work\to_send\VR5861_1s_RW05.dgn