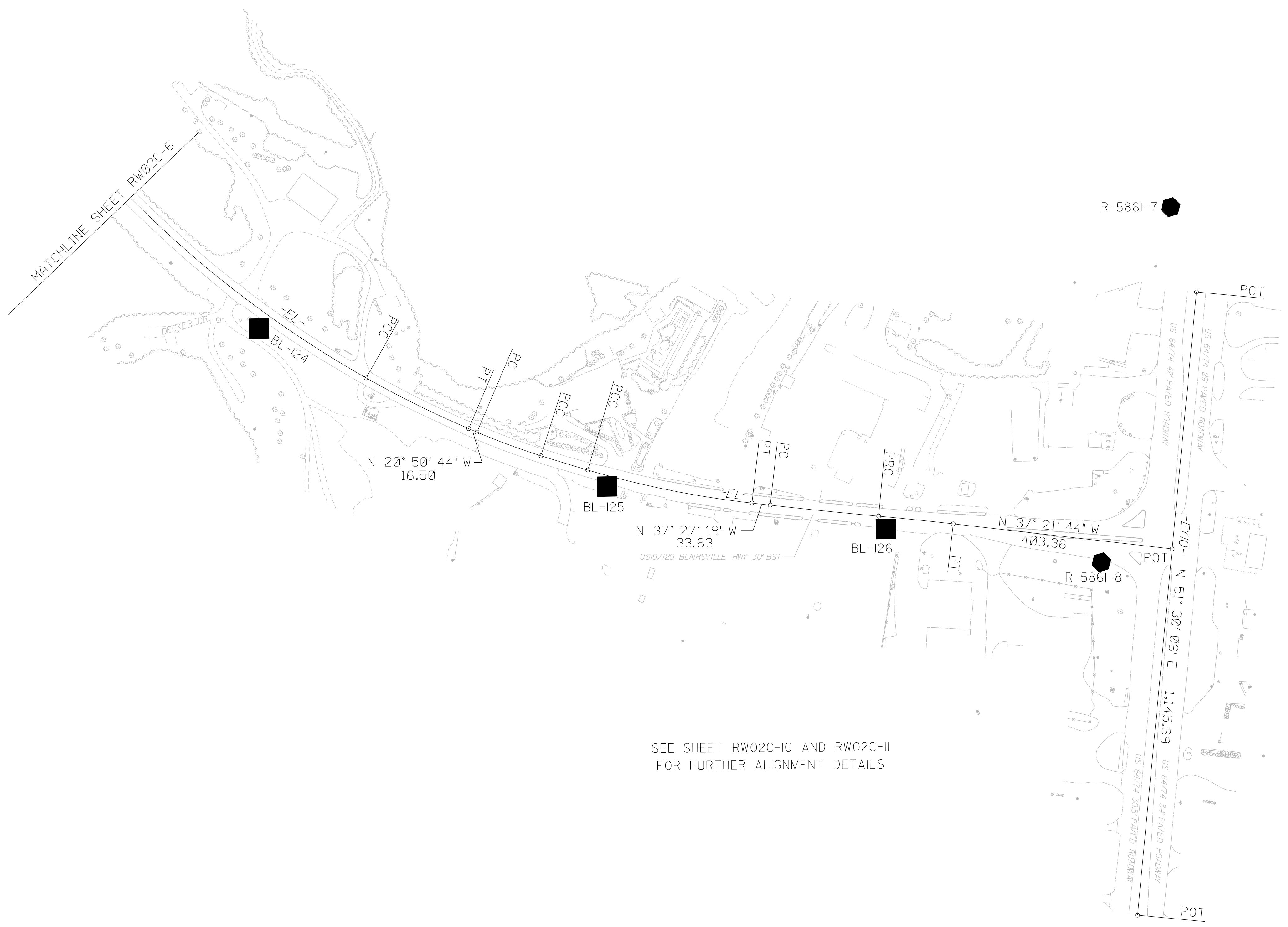
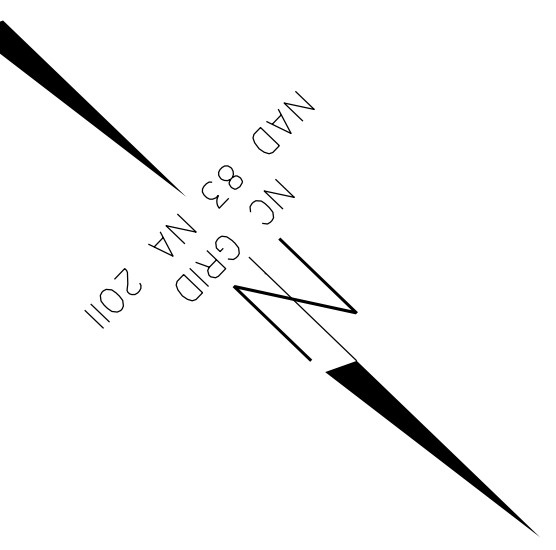


SURVEY CONTROL SHEET

W/EXISTING CENTERLINE ALIGNMENTS PRIOR TO CONSTRUCTION



SEE SHEET RW02C-10 AND RW02C-11
FOR FURTHER ALIGNMENT DETAILS

NOTES:

1. PROJECT CONTROL WAS ESTABLISHED USING GNSS, THE GLOBAL NAVIGATION SATELLITE SYSTEM.
2. THE SURVEY CONTROL DATA FOR THIS PROJECT HAS BEEN COMPILED FROM VARIOUS SOURCES. IF FURTHER INFORMATION REGARDING PROJECT CONTROL IS NEEDED, PLEASE CONTACT THE LOCATION AND SURVEYS UNIT.

6/2/09

REVISIONS

10-AUG-2010 09:09
 C:\jw\work\projects\checked\work\RW_Sheets\Finished\5861\WET\To_Send\5861-1s.rw02c-7.dgn
 5861\10-AUG-2010 09:09